



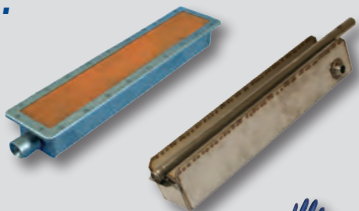
MANUFACTURING, INC.

2022 Preview Catalog

Your Reliable Source For:

Broiler Parts

Including JF143 parts!



Broiler Sheets



Safety & Maintenance



Fryer Parts & Accessories

Vegetable Slicers



**Smallwares
& More!**



Nov-Dec 2021

1-800-238-5384

www.dmiparts.com

Fax: 1-866-302-9397

Table of Contents & Ordering Information

BROILER PARTS - 800/900/1400 SERIES

Burners & Accessories	3
Broiler Sheets & Rolls	4
Ignition & Gas	5-7
Drive Motor & Electrical	8-10
Belt Drive & Bearings	11-12
Sheet Metal & Tools.....	13-16



TOASTER SHEETS 16

BROILER PARTS - JF143 SERIES 17-23

SAFETY APPAREL 24-26

MAINTENANCE 27-28

FRYER ACCESSORIES & PARTS

Frymaster MJ45 & H50	29-31
Fryer Tools & Accessories.....	32-36
Hood Filters.....	37
Gycor Filter Pads	38-39

OTHER

Thermometers, Scales & Timers.....	40-41
Vegetable Slicers & Choppers	42-45
Smallwares	46-52
Bulbs	53
Food Pans	54-58
Holding Units	59

Your Customer Service Team



Mark



Denise



Dennis



RoseMary



Julie



Celina

- DMI is open from 8:15 am to 5:00 pm EST Mon-Fri. Your call will always be answered by a live customer service representative during business hours. Phone messages left after-hours will be returned on the next business day.
- Fax, Website and Email are available 24 hours/7 days a week.
- There is no minimum order.
- All prices are subject to change. Check www.dmiparts.com for the most current pricing.
- For ground shipment transit times, see map on page 15.
- Part numbers listed in green are for reference only.

Toll Free Phone Orders: 800-238-5384

Toll Free Fax Orders: 866-302-9397

Local Phone Orders: 440-975-8645

Local Fax Orders: 440-975-0688

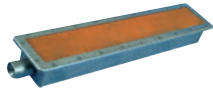
Website Orders: www.dmiparts.com

Email Orders: orders@dmiparts.com

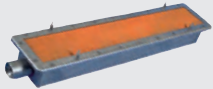
From Mexico: 001-800-238-5384



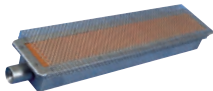
BUY 3 AND SAVE!



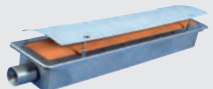
8000
Upper Dispos-A-Burner™
Without Reverberator



8001
Lower Dispos-A-Burner™
Without Shield



8002
Upper Dispos-A-Burner™
With Reverberator



8003
Lower Dispos-A-Burner™
With Delux Shield

TOTAL BURNERS ORDERED

1-2

BEST VALUE
3 or more

\$88.95 ea.

\$83.95 ea.

\$88.95 ea.

\$83.95 ea.

\$104.95 ea.

\$99.95 ea.

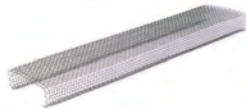
\$104.95 ea.

\$99.95 ea.



EASILY
CONVERT
YOUR UPPER
BURNER INTO
A LOWER
BURNER!

8015 Spacer Kit (4) for
Lower Burner **\$5**



8011
Reverberator with
Safety Ends..... **\$29**

Reverberators and clips for Marshall Air
broilers are also available. Please call for
pricing.



8014
Lower Burner
Delux Shield..... **\$29**

DMI Shields are fabricated with bends
at each of the four edges for extra
strength and durability.

Keep your broiler
clean with these brushes!

See page 16



SHEETS**Black & Silver, 11-3/8" x 30"**

(for 800, 900 & 1400 Series Flow-Through Models)

8211	1 sheet.....	\$9.50
8211-06	6 sheets.....	\$44.95
8211-12	12 sheets.....	\$79.00

**Tan, 12" x 30"**

(for 800, 900 & 1400 Series Flow-Through Models)

8210	1 sheet.....	\$9.00
8210-06	6 sheets.....	\$43.00
8210-12	12 sheets.....	\$75.00

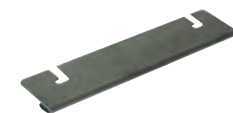
**Tan, 23" x 26"**

(for 900 and 1300 Series Self-Return Models)

8213	1 sheet.....	\$12.50
8213-06	6 sheets.....	\$60.00

ROLLS

DMI's Rolls are **108 feet long**. This is the equivalent of 44 sheets for your 800, 900 or 1400 series Flow Through Broilers.

**Black & Silver, 12-1/4" x 108 ft.****8216-ROLL \$269.00****Tan, 12" x 108 ft.****8210-ROLL \$259.00****SAVE:****20%**on sheets in
6-packs**30%**on sheets in
12-packs**35%**by ordering
Rolls!**8304**

Universal Broiler

Sheet Clamp

(950, 980, 824B,

1424) **\$22**

All broiler sheets and rolls are available via
our convenient Autoship Program.

Never forget to order sheets again!

Call us at 1-800-238-5384 to learn more.

REGULATORS AND REPLACEMENT SPRINGS

FOR MODELS:
824, 824A, 824B, 1424, 950



8227 (2025-A)
3" Lo-Gas, Nat,
1/2" NPT..... **\$39**

8227-LP
8" Lo-Gas, LP,
1/2" NPT..... **\$39**



8227-1 (2025-01)
Gray Spring,
Lo-Gas, Nat..... **\$2**

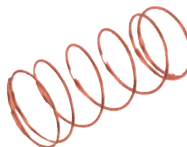
8227-1LP (2032-A)
Blue Spring,
Lo-Gas, LP..... **\$2**

FOR MODELS:
824, 824A, 824B, 1424, 950



8228 (2049-A)
5" Hi-Gas, Nat,
1/2" NPT..... **\$39**

8228-LP
11" Hi-Gas, LP,
1/2" NPT..... **\$39**



8228-1 (2049-A2)
Orange Spring,
Hi-Gas, Nat **\$2**

8228-1LP (2049-A1)
Blue Spring,
Hi-Gas, LP..... **\$2**

PILOT PUSHBUTTON VALVES



8225-2 (2122)
1/2" NPT (824B, 1424, 950). **\$149**



8225-1 (2026)
3/8" NPT (824) **\$125**



8225-1A
Pushbutton only for #8225-1
(824) **\$59**

SOLENOID VALVES



8221 (2003)
High Gas, 1/2" NPT
(824, 824A)
..... **\$115**

8222 (2085-A)
Main Gas, 3/4" NPT
(824, 824A)
..... **\$165**

8222-1 (2003-B)
Main/High Gas, 1/2" NPT
(824B, 1424, 950)
..... **\$125**

6 BROILER PARTS – 800/900/1400 Series

Ignition & Gas



BURNER ORIFICES

- 8230** (2014)
Natural Gas #50 \$4
- 8223** (2015)
Natural Gas #48 \$3
- 8231** (2035)
LP Gas #57 \$4




PILOT ORIFICES

- 8232** (2018)
Natural Gas \$9
- 8233** (2023)
LP Gas \$9



THERMOCOUPLES

- 8224** (2024)
24" \$15
- 8224-48** (2101)
48" \$18

PILOT CARRYOVER BURNERS		Units Required per Broiler	
		824	824A
	8235 Standard (2011) ... \$30	7	2
	8235-2 2-Port (2179) ... \$32	-	2
	8235-3D 3-Port Down (2181) ... \$27	-	1
	8235-3S 3-Port Straight (2178) ... \$27	-	2



- 8327** (0081-07)
Pilot Chimney \$109



#8220-A lens included

- 8220** (2001)
Gas Pressure Gauge 1/8" NPT \$49
- 8220-A** (2001-01)
Lens Only For Gas Pressure Gauge \$3



- 8229** 5/16" Orifice Removal Driver \$10



- 8230-B** Orifice Brush, Natural Gas #50 \$5
- 8231-B** Orifice Brush, LP Gas #57 \$5



8247
Super Swivel,
3/4" NPT \$89



GAS HOSE, 3/4" NPT
8245 36" Length \$165
8245-48 48" Length \$189



8246
Quick Disconnect,
3/4" NPT \$65



8240-1 (4181-08)
Spark Igniter with
(1) wire (824B, 1424,
950) \$15



8240-2 (4181)
Spark Igniter with
(2) wires (824, 824A)
..... \$17



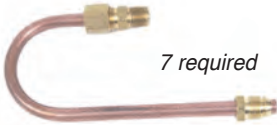
8241 (4182)
Electrode, Igniter
(1 per Pilot) \$8



8242 (4183)
Electrode Mounting
Bracket..... \$6

PILOT TUBES

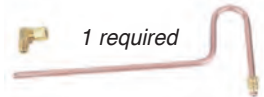
For models 824B, 1424 & 950



8239-1 Carryover \$29



8239-2 Upper \$21



8239-3 Lower \$21

Thousands of loyal customers agree:
DMI's convenient **AUTOSHIP PROGRAM** can't be beat!

- 1 Choose any quantity & combination of items found in our catalog. The most popular Autoship items are:

**Charbroiler Sheets, Toaster Sheets,
Safety Apparel, Filter Pads**

- 2 Choose frequency of Autoship:
Monthly, Bi-Monthly, Quarterly, or Semi-Annually



8250-950 (4144-03)
Gear Motor w/ 10T Sprocket
(824A, 824B, 1424, 950) **\$499**



8262-G (4094)
Motor Breaker Switch,
Green Handle, 250V Max
(824B, 1424, 950) **\$29**






8250-3 (4145-10)
Cap for Motor Brush Holder
(824A, 824B, 1424, 950) ... **\$4 ea.**




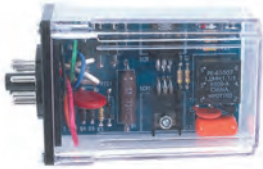
8251 (4137-03)
Plug for Gear Motor Cord,
Quick Release (824) **\$16**



8252 (4137-02)
Receptacle for Gear Motor
Plug (824)..... **\$25**

BROILER MODEL	CARBON MOTOR BRUSHES (actual sizes shown below)	MOTOR BRUSH HOLDERS
824	8250-1A  1/4" x 1/4" Square End \$5.50 ea.	8250-4A \$15 ea.
824	8250-1B (4004-02)  1/8" x 3/16" Rectangle End... \$5.50 ea.	8250-4B \$10 ea. (4004-07)
824A, 824B, 1424, 950	8250-1C (4145-06)  3/16" x 1/4" Rectangle End... \$5.50 ea.	8250-4C \$10 ea. (4145-09)

MOTOR SPROCKETS		
	8286-10 (6102)	10T, 5/8" Bore (824)..... \$23
	8285-10 (6006)	10T, 1/2" Bore (824A, 824B, 1424, 950)..... \$23
	8285-13 (6007)	13T, 1/2" Bore \$24
	8285-15 (13011)	15T, 1/2" Bore (824A, 824B, 1424 with Bun Belt Speed Kit ONLY)..... \$25

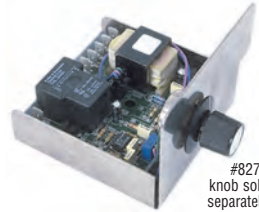


8265 (4135)
SCR Controller, Can Type,
115V **\$140**



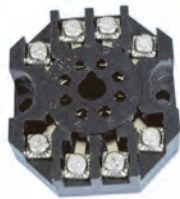
#8272 knob sold separately

8270 (4071-P)
Auto Temp Control –
ATC (824, 824A) **\$94**



#8272
knob sold
separately

8270-1 (4425)
Auto Temp Control –
ATC / Bun Platen Control (824B,
1424,
950) **\$135**

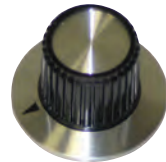


8266 (4136)
Socket Base for SCR, 10 AMP –
600V Max..... **\$9**



#8272
knob sold
separately

8269 (4014)
Potentiometer, Speed
Control **\$59**



8272 (4445)
Knob for potentiometer
(speed control) & ATC **\$6**



8270-2 (5138-P)
Dial Plate for ATC **\$8**



8255 (4099)
Main On/Off Switch, Toggle,
20 AMP – 250 V Max..... **\$159**



8271 (4073)
Temperature Probe
for ATC **\$37**

10 BROILER PARTS – 800/900/1400 Series

Drive Motor & Electrical



8275 (4041)
 Contactor, 30 AMP – 120V
 (824, 824A)..... \$45



8275-1 (4041-1)
 Relay/Contactor (2 per broiler)
 (824B, 1424, 950) \$29



8277-A (4125)
 Knob for Thermostat..... \$15

FUSES



8260 (4092)
 ABC-5
 (824, 824A)..... \$2



8260-1 (4602)
 SC-5
 (824B, 1424, 950) \$8

FUSE HOLDERS



8261 (4093)
 For ABC-5
 (824, 824A)..... \$5



8261-1 (4601)
 For SC-5
 (824B, 1424, 950) \$14



8278 (4453)
 Knob, Platen Adjustment
 (824B, 1424, 950) \$23



INDICATOR LIGHTS
8274-A (4222)
 Amber \$5
8274-R (4100)
 Red \$4



8390-208 (4022) 24" 208V Hairpin Heat Element..... \$249
8390-230 (4031) 24" 230V Hairpin Heat Element..... \$249

Please check the voltage of your old element before ordering.



8277 (4020)
 Platen Control Thermostat
 (824, 824A)..... \$99

#8277-A
 knob sold
 separately

VIRGIN TEFLON BEARINGS



8280 (6066)

5/8" each \$7

8280-4

SAVE!

5/8" **4-pk \$23**

SPACER / SHOULDER BOLTS



8284-1 (4048)

3" length **\$13**

(824B, 1424, 950)



8284-2 (0074-04)

Dual Rod Belt Support **\$49**

(1424)

PATTY / BUN CHAIN



8290-22 (6023)

22" Width **\$57/ft.**

(824B, 1424, 950, 952, 1352)

8290-24 (6024)

24" Width **\$49/ft.**

(824, 824A)

NOTE: For broiler models listed above, the typical length of a complete patty or bun chain is 6 feet.

8290-06 (6120)

6" Width **\$45/ft.**

8290-16 (6125)

16" Width **\$69/ft.**

8290-12 (6123)

12" Width **\$59/ft.**

8290-18 (6129)

18" Width **\$69/ft.**



8291

Pliers for Patty / Bun Chain **\$51**







8289

Shaft Cleaning Tool **\$6**



8292-1 (6060)

Teflon Wear Strips (824B, 1424, 950) **2-pack \$55**

SPROCKETS AND DRIVE CHAIN	Part #	Description	Price	Broiler Model		
				824	824A/B, 1424, 950	
					Standard	w/ Bun Belt Speed Kit
 Motor Sprocket	8286-10 (6102)	10T, 5/8" Bore	\$23	1		
	8285-10 (6006)	10T, 1/2" Bore	\$23		1	1
	8285-15 (13011)	15T, 1/2" Bore	\$25			1
 Bun Belt Sprocket	8286-15 (6037)	15T, 5/8" Bore	\$25	1	1	
	8286-10 (6102)	10T, 5/8" Bore	\$23			1
 Patty Belt Sprocket	8286-30 (6038)	30T, 5/8" Bore	\$39	1	1	1
 Drive Chain	8295 (6027)	#35 Drive Chain	\$4/ft.	3 feet	3 feet	1.5 feet & 4 feet



8295-1 (6048)
#35 Chain Repair
Link, Master\$3



8295-2 (6053)
#35 Chain Repair Link,
Offset\$4



8296
#35 Chain
Breaker Tool\$55

IDLER SHAFTS



8287-1 (6093)
Patty (824, 824A)\$99

8287-2 (6056)
Bun (824, 824A)\$99

8287-3 (6167)
Patty/Bun (824B, 1424, 950)\$195

DRIVE SHAFTS



8288 (6054)
(824, 824A)\$119

8288-1 (6168)
(824B, 1424, 950)\$229



8008 (8455)
Upper Burner Channel Strip
(824, 824A, 824B, 1424, 950)\$19



8322 (8425)
Burner Support Bracket
(824B, 1424, 950)\$29



8305-1 (9453)
Upper Burner Front Reflector w/Hole
(824B, 1424, 950)\$49



8308 (9005)
Lower Burner Rear Reflector
(824, 824A, 824B, 1424, 950)\$39



8306 (9041)
Upper Burner Rear Reflector
(824)\$69



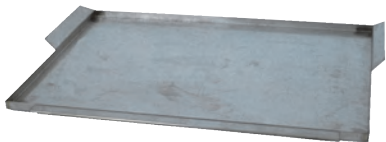
8327 (0081-07)
Pilot Chimney
(824B, 1424, 950)\$119



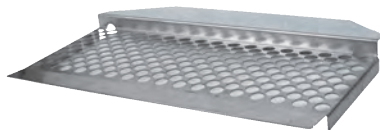
8321 (9184)
Top Rear Awning Reflector
(824A, 824B, 1424, 950 models
without catalytic converter)\$175



8323 (0067)
Burner Access Hole Cover
(824A, 824B, 1424, 950)\$199



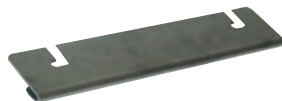
8316-1 (9023-B)
Patty Discharge Pan
(824B, 1424, 950) **\$140**



8317-1 (9131)
Insert for Patty Discharge Pan
(824B, 1424, 950) **\$109**



8319-1 (9409)
Patty Shield
(for use with patty belt extension) **\$68**



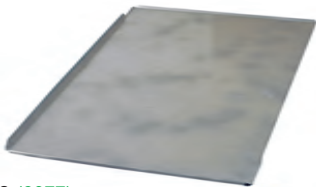
8304 Universal Broiler Sheet Clamp
(824B, 1424, 950) **\$22**



8326-1 (9467)
Chain Guard Cover
(824B, 1424, 950) **\$140**



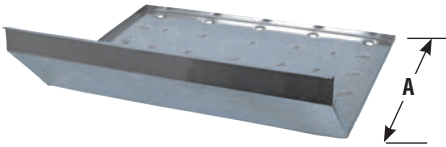
8320-1 (9194)
Side Panel
(824B, 1424, 950)..... **\$259**



8313 (9077)
Crumb Pan
(824, 824A, 824B, 1424, 950) **\$109**



8315 (9054)
Bun Discharge Chute **\$175**



8300-2 (9088)
Grease Pan
(824B Ext, 1424 Ext, 950 Ext)
A = 23"\$259



8311-1 (9452)
Grease Collection Box
(824B, 1424, 950) \$35



8310 (9062)
Grease Drain Chute
(824)\$32



8310-1 (9164)
Grease Drain Chute
(824B, 1424, 950)\$21

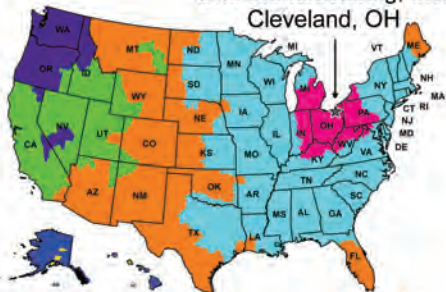


8324 (6166)
Meat Belt Scraper, Feed End
(824B, 1424, 950)\$130



8325-1 (6170)
Stripper Blade
(824, 1424, 950)\$75

DMI Manufacturing, Inc.
Cleveland, OH



When will your FedEx Ground shipment be scheduled for delivery?

1 Day 2 Days 3 Days 5 Days 6 Days 7+ Days

NORMAL DELIVERY SCHEDULE IN DAYS

(Next Day and 2nd Day Delivery Also Available)



My team is dedicated to getting your orders shipped immediately so that you can keep your restaurants running smoothly.

-Jeremy, Warehouse Manager

16 BROILER PARTS – 800/900/1400 Series

Tools



8357
Cleaning
Brush, Soft
Nylon (for
Burner Screen)..... **\$13**



8358
Cleaning
Brush, Hard
Nylon
(for Burner Tube)..... **\$17**



8359
Cleaning
Brush,
Hard Nylon
(for Shields/Rod Belts) **\$11**



8229
5/16" Orifice Removal Driver... **\$8**



8289
Shaft Cleaning Tool..... **\$6**



8291
Pliers for Patty / Bun Chain ... **\$51**



8572
Magnetic Tip Screwdriver,
Phillips Head..... **\$4**

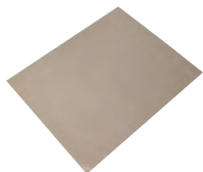


8375
5" Caster with Brake
(for broiler stand) **\$42**

TOASTER SHEETS



PRINCE CASTLE 197/297 SERIES



TOASTER SHEET (16-1/2" x 20")

8219..... Each **\$10**
8219-06 6 Pack **\$48**
8219-12 12 Pack **\$84**
8219-Roll.....108 ft. continuous roll **\$390**

PRINCE CASTLE CTD/CTDE



CTD TOASTER SHEET (6-1/2" x 26")

6850..... Each **\$12**
6850-06 6 Pack **\$57**

CTDE TOASTER SHEET (12" x 26")

6852..... Each **\$17**
6852-06 6 Pack **\$81**

AIR BOX & BURNER



3006 (20709)
Air Box, Front 21.38".....\$755



3005 (20621)
Air Box, Rear 21.38".....\$865



3007 (21214)
Flex Connector, 3/4" x 24"\$145



3008 (22937)
Double Full Burner, 1" x 26.19"\$429



3000 (18447)
High Pressure Blower\$659



3001 (19764)
Heater Hose, 3/4" ID x 2"....\$7



3002 (19763)
Hose Clamp, #12\$3



AIR BLOWER RESTRICTOR

3003 (20903) 1/4" Bore (CJ).....\$14
3004 (22367) 3/8" Bore (H)\$22

SHEETS & TOOLS



BROILER SHEET, BLACK/SILVER
(11-3/8"x 23")
8204..... Each \$8
8204-06 6-pack \$38
8204-12 *Best Value* 12-pack \$63



8291
Pliers for Patty/Bun Chain..... \$51



8296
#35 Chain Breaker Tool\$55



3106 (25332)
Combination Wrench Tool....\$39







3107 (25333)
Shaft Cleaning Tool\$29



3108 (23307)
Cleaning Brush.....\$24

GAS & IGNITION

	Nat Gas	LP Gas
 Upper Burner Orifice	3009 (18152) #52 (CJ).....\$18 3014 (18148) #48 (H, CJ without feeder).....\$19	3016 (18163) #63 (CJ).....\$9 3029 (18156) #56 (H).....\$39
 Pilot Orifice	3010 (2182) #3225 (CJ upper, H upper & lower).....\$10 3011 (2047) #5232 (CJ lower)..\$12	3020 (2023) #4212 (CJ & H upper).....\$12 3019 (17278) #4214 (CJ & H lower).....\$12
 Lower Burner Orifice	3012 (2051) #46 (CJ).....\$10 3015 (2070-40) #40 (H, CJ without feeder).....\$9	3021 (2065) #54 (CJ).....\$14 3023 (2053) #52 (H).....\$14
 Zip Tube Orifice	3013 (22930) #70 (CJ & H)\$36	3022 (23481) #78 (CJ & H)\$39



3017 (5599) Upper Burner Orifice Washer (LP Gas)....\$0.25



3018 (24336) Upper Burner Orifice Pipe Adapter (LP Gas) \$3



3024 (20826) Zip Tube, 8.44" Long..... \$46



8235-2 (2179) Pilot Carryover Burner, #J129DDA.....\$32



3025 (2180) Pilot Carryover Burner, #J1994MDA-2H.....\$87



3028 (21316) Modulating Gas Valve (CJ) \$529



3026 (10954) Solenoid Valve, 1/2" NPT, 24 VAC\$199



8228 (2049-A) Regulator, RV48, 1/2" NPT, Nat Gas.....\$19



3027 (12741) Solenoid Valve, 1/2" NPT, 24VAC, 1/4" Compression Fitting.. \$229



3720 (10291) Igniter\$87



3718 (16921) Ignition Module.....\$269



3723 (25957 / 17185) Flame Sensor, Slotted.....\$62

CONVEYOR PATTY BELT



Patty Rod Belt 22" Width

3048-91 (6023)
57" length (CJ) **\$265**
3048-123 (6023) 77" length
(H, CJ without feeder)..... **\$330**



3045 (18831)
Drive Shaft, Patty Belt..... **\$289**



3044 (21722) Bearing, 5/8"
Bore, Side Panel..... **\$42**



3043 (6028)
Set Collar 5/8" Bore..... **\$8**



3104 (22163) Stiffener / Scraper,
Patty Belt, Front..... **\$27**



3105 (22204)
Stripper Blade, Short, Patty Belt
Discharge..... **\$109**



3040 (20786) Gear Motor,
DC, Brushless..... **\$789**



3041 (178996) Sprocket, 10T,
Motor, 3/8" Bore..... **\$23**



3042 (6039) Sprocket, 32T,
Patty, 5/8 Bore Brushless **\$48**



Idler Shaft Patty Belt

3046 (21227) (CJ)..... **\$209**
3047 (24175) (H) **\$53**



3734 (6049) Bearing,
1"W x 1-7/8"H, 5/8" Bore.... **\$35**



8295 (6027) 2 Feet (23.25") req'd
35 Drive Chain, per foot..... **\$4/ft**
8295-1 (6048) #35 Chain
Repair Link, Master..... **\$3**

CONVEYOR BUN BELT



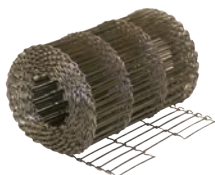
3050 (22811) Bearing, Bun Belt,
Feed End, 3" x 1/2"..... **\$99**



3058 (26304)
PTFE Wear Strip..... **\$95**



3059 (26298) Guide for PTFE
Wear Strip..... **\$32**



3052 (20864) Wire Bun Belt,
10.625" width, per foot
(6.5ft. required)..... **\$99/ft.**



3051 (21720) Dual Drive Shaft,
Bun Belt **\$399**



For Bun Belt Drive Shaft
3055 (24171)
Coupler, 5/8"..... **\$79.00**
3056 (24172)
Bolt, 3/8-16 x 4" **\$3.00**
3057 (5600)
Washer, 3/8" **\$0.25**



3044 (21722) Bearing, 5/8" Bore,
Side Panel..... **\$42**



3054 (20603) Sprocket, 11T,
Bun, 5/8" Bore **\$55**



3053 (21860) Adjusting Arms
Assy, Bun Belt..... **\$750**

ELECTRICAL



3718 (16921)
Ignition Module..... **\$269**



3723 (25957 / 17185)
Flame Sensor, Slotted..... **\$62**



3070 (17201) Light,
Ignition Lock-Out, LED **\$6**



3071 (4402) Indicator Light,
Green, 28V **\$22**

image not available

3073 (20721) Bun Platen,
208V/2400W **\$1,499**

ELECTRICAL (Con't)



3069 (4403-04)
ATC Probe, 19" \$48



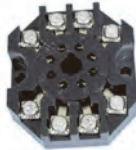
3748 (16408)
Thermocouple / Temp. Probe
11.63" \$59



3068 (18861)
Thermocouple Probe
48" \$54



3750 (13727-B)
Motor Control, 8 Pin \$499



8266 (4136)
Socket Base, 8 Pin \$9



3744 (15480)
Main On/Off Switch \$165



3752 (13570-C) Load Sensing
Control, 11 pin \$659



3754 (13737) Socket Base,
11 pin \$39



3078 (25918) Control, PID Temp,
Gas \$614



3072 (13579)
Switch, Motor Reversing \$23



3074 (22929) Transformer,
115/230VAC x 18-24 VAC \$179



3075 (16034) Control Transformer,
115/230VAC, 24V \$79

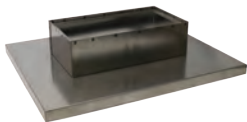


3076 (12725)
Bridge Rectifier \$24



3077 (4418) Relay,
24V input, 30V-25A output \$95

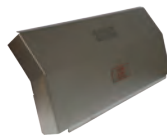
SHEET METAL



3102 (22840)
Hood, Chimney, Single..... **\$679**



3103 (22991)
Heat Baffle, Upper.....**\$329**



3092 (21201)Heat Shield,
Feeder / Frame.....**\$229**



3093 (21695)
Grease Pan, Flat..... **\$219**



3091 (20848)Crumb Pan,
Bun Conveyor **\$429**



3090 (9452)Grease Box,
12" x 10" x 4" **\$85**



3097 (21869)
Heat Shield..... **\$189**



3099 (22179)
Sizzle Plate..... **\$769**



3098 (21873)
Patty Catch Pan **\$249**



3096 (21868)
Grease Chute, Rear **\$72**



3095 (21865)
Bun Slide, Pivoting **\$299**

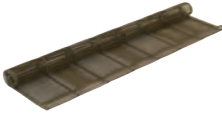


3104 (22163) Stiffener / Scraper,
Front, 22" Patty Belt.....**\$27**



3105 (22204) Stripper Blade, Short,
Discharge, 22" Patty Belt.....**\$109**

FEEDER



3120 (24879) Feeder Wirebelt
Assy. Complete..... **\$499**



3121 (20882) Sprocket, 24T,
Wirebelt 3/8" Bore..... **\$29**



3122 (19913)
Bushing, Flanged **\$25**



3123 (11194)
Coupler, Drive **\$48**



3124 (20884) Drive Assembly
with Clutch..... **\$729**



3125 (15882)
Combo Clutch Assembly..... **\$489**



8286-15 (6037) Sprocket,
15T, 5/8" Bore **\$25**



3130 (11608)
Clutch Knob, Black..... **\$25**



3126 (14900) Clutched,
Sprocket Only **\$369**



3127 (10275)
Washer, Thrust **\$4**



3128 (14896) Bearing,
Shoulder Washer **\$8**



3129 (10627)
Bearing Clip **\$3**



8295 (60275) 1 foot (10.5") req'd
#35 Drive Chain, per foot **\$4/ft**



8295-1 (6048) #35 Chain Repair
Link, Master **\$3**



8295-2 (6053) #35 Chain Repair
Link, Offset **\$4**

OVEN MITTS



8335
Tucker QuickClean™ Oven Mitt,
15" Length, 450°F.....\$22 ea

8335-X NEW!
Extra Liner for #8335 Mitt\$12 ea



8344
Tucker Puppet Mitt, Nomex® with
VaporGuard™ and Kevlar Palm
15" Length, 900°F.....\$34 ea



8354
Oven Mitt, 17" Length.....\$8 ea

BROILER MITTS



8353
Tucker Three-Finger QuicKlean™
Gloves, Poly Cotton with Kevlar
Hand, 18" Length, 650°F...\$75/pr.

8353-X NEW!
Extra Liners for #8353 Gloves...\$32/pr.



8355
Broiler Mitts, Neoprene Coated,
Heavy Duty Insulated,
17" Length, 350°F.....\$32/pr.

FRYER GLOVES



Tucker QuicKlean™ Fryer Gloves
20" Length, 300°F.....\$24/pr.

8330-M Size Medium
8330-L Size Large
8330-XL Size X-Large



8356
Fryer Gloves, Neoprene Coated,
Heavy Duty Insulated,
17" Length, 350°F.....\$32/pr.



8356-31
Fryer Gloves, Neoprene Coated,
Heavy Duty Insulated,
26" Length, 350°F.....\$49/pr.

CUT RESISTANT GLOVES



SAFETY TIP

Remember to inspect your safety apparel on a regular basis and replace as needed to keep your employees safe!



Tucker Red Glove.....**\$18 ea**

- 8405-S** Small
- 8405-M** Medium
- 8405-L** Large

White/Blue Glove.....**\$18 ea**

- 8404-S** Small
- 8404-M** Medium
- 8404-L** Large



G-Tek Cut Resistant Gloves, Orange.....**\$19/pr**

- 10550-S** Small
- 10550-M** Medium

- Nitrile coated palm & fingertips for excellent grip
- Complies with FDA food handling requirements



Tucker Cut-Resistant Freezer Gloves.....**\$10/pr**

- 8406-M** Medium
- 8406-L** Large
- 8406-XL** X-Large

- Synthetic knit shell creates high level of flexibility & dexterity
- Palm coating withstands exposure from liquids
- Brush fleece lining provides thermal properties



Tucker Cut-Resistant Stocking Gloves.....**\$11/pr**

- 8407-M** Medium
- 8407-L** Large
- 8407-XL** X-Large

- Provides a good balance of comfort, dexterity & cut resistance
- Palm coating provides excellent grip & tactility

SAFETY APPAREL



10100
3-Ply Non-Medical Use Face Masks, Box of 50. **\$36/box**



8413
Infrared Forehead Thermometer **\$79**

- Fast Reading (Approx. 1 second)
- Runs on 2 AAA Batteries (included)
- Memory for last 10 readings



8333
Tucker QuickClean™ Apron,
36" **\$32**



8361 Apron,
Heavy Duty PVC,
35" x 45" **\$19**



8362 Face Shield (w/visor), w/
Deluxe Adjustment **\$28**

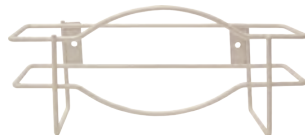
8362-1 Replacement
Visor Only, 8" x 15-1/2" **\$10**



8364
Tucker QuickClean™
ShinGuards™ **\$55**



10" Hi-Top Boots
8363 Size Large **\$41**
8363-XL Size X-Large **\$41**



8403
Wall Mount for Vinyl PVC
Gloves **\$15**
(Hardware included)

CEILING TILE PROTECTOR



Keeping your ceiling tiles clean has never been easier!

- The Ceiling Tile Protector shown here is black for illustration purposes only. It is clear and nearly invisible.
- Fast and easy installation.
- Reduces ceiling maintenance costs.
- National Sanitation Foundation (NSF) tested.
- Fits all standard diffusers (24" x 24")

8577..... each **\$30**
8577-05 5-pack **\$138**

HAND SANITIZER STANDS

- Allows you to place free standing hand stations wherever you want!
- 48" Total Height

- Shelf can hold various hand sanitizer dispenser or bottle sizes (Hand sanitizer not included)
- Base of Each Shelf Measures 4" x 6"



10105
Single Shelf..... **\$129**



10106
Double Shelf **\$159**



Illustration of hand sanitizer dispenser mounted onto the stand. Hand sanitizer not included.



10507
Viper® Pro Multi-Purpose Safety
Cutter, Hi-Vis Yellow..... **6-pk \$19**



10508
Viper® Pro Bag Opener,
Safety Orange **6-pk \$16**



10509
X-tra Safe® Disposable Utility
Knife, Yellow **6-pk \$25**



8574
Pouchmate Pouch Opener **\$4**



8575
Bucket Opener, Plastic **\$11**



8576
Safety Box Cutter **\$4**



8455
Red Sani-Pail, 6 Qt. **\$5.50**



8456
Blue Sani-Pail, 6 Qt. **\$5.50**



NEW

9013
Scouring Pad, Green, Medium Duty,
6" x 9" **Box of 20 \$19**



8562 No Slip Magnetic
Doorstop **\$8**



8564 Table Wobble
Stopper **6-pk \$5**

DMI is proud to offer Frymaster replacement parts!

FOR FRYMASTER MJ45 AND H50 UNITS



6000 (806-4206)
 Temperature Probe
 Assembly **\$182**



6001 (210-0681)
 Probe Guard..... **\$18**



6002 (826-1177)
 Hi-Limit Thermostat..... **\$154**



6003 (807-6084)
 Heat Relay, 12V **\$32**



6004 (806-3660)
 Sound Device High Output .. **\$41**



6005 (807-2103)
 Drain Valve Switch..... **\$14**



6006 (807-4978)
 Dual Voltage Transformer.. **\$98**



6007 (826-3191)
 Filter Pump/Gasket Kit **\$449**



6008 (826-1712)
 Filter Pump Motor..... **\$609**

FOR FRYMASTER H50 UNITS ONLY



6100 (826-0981)
Igniter with Gasket, Nat.....\$115



6101 (826-1072)
Universal Burner, Nat/LP...\$435



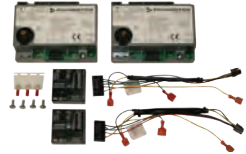
6112 (826-0931)
Burner Insulation Kit
for #6101.....\$125



6105 (826-2024)
Ignition Cable.....\$45



6114 (826-3668)
Full Vat Fenwall Ignition
Module Conversion Kit.....\$329



6116 (826-3669)
Duel Vat Fenwall Ignition
Module Conversion Kit.....\$429



GAS VALVES

6106 (826-1122)
Honeywell, Nat.....\$165

6107 (826-1120)
Conversion Kit,
RS to Honeywell, Nat.....\$229



6108 (106-2994SP)
Blower Assembly.....\$299



6109 (826-2264)
Interface Board.....\$252



6110 (810-0403)
Burner Orifice, Nat, 0-4000 ft..\$25



6111 (807-3843)
Fuse, 3 Amp, 250V.....\$9

FOR FRYMASTER MJ45 UNITS ONLY



6050 (806-0183)
Operating Thermostat\$355



6051 (810-1873)
Thermopile with Push-on
Terminal.....\$84



6052 (810-0617)
Thermopile with
Coaxial End\$116



6054 (807-3294)
Gas Valve, Honeywell,
Nat, 24V\$259



6055 (807-1603)
Gas Valve, Honeywell, Nat,
Millivolt\$259



6053 (810-0426)
Pilot, Nat.....\$74



6056 (826-1596)
Gas Valve Conversion Kit,
RS to Honeywell, Nat.....\$345



6057 (806-3548/826-2574)
Interface Board\$349

*Don't see the Frymaster parts you need?
Call us at 1-800-238-5384 for pricing & availability of other items.*



FRY BASKETS

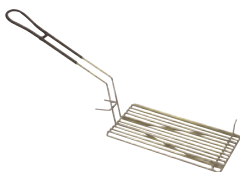
8369 Green Handle 12"L x 6"W x 5-3/8"H..\$24

8387 Blue Handle 13"L x 5-1/2"W x 5-1/2"H..\$26

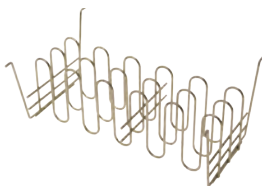
FRY BASKETS W/ LID & DIVIDERS

8389 Yellow Handle, 5 slot 12-1/2"L x 6-3/8"W x 3-1/2"H . \$23

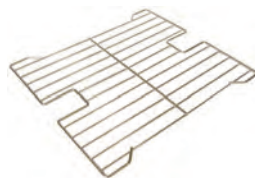
8369-4 Blue Handle, 10 slot 12-1/2"L x 6-1/8"W x 4"H..\$26



8369-3 Fry Basket Submerger (for use with #8369)..... \$21



8369-1 Fry Basket Insert (for use with #8369 or #8387) \$38



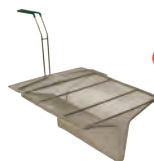
8388 Fry Basket Support Rack (fits Frymaster MJ45 & H50) \$95

SEDIMENT TRAYS

- Fits beneath your fry baskets to catch crumbs and sediment.
- Can be removed quickly and easily for cleaning.
- Helps to lengthen the life of your oil.



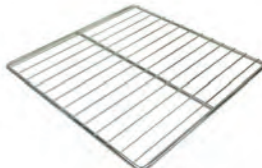
8370
14"L x 12.5"W X 6.5"H \$75
Fits Most Frymaster Gas Fryers



8372
13.25"L x 11.75"W X 6.5"H \$99
Fits Most OCF/GL Gas Fryers



5201
Pitco Basket Support Rack, Twin 13-1/2"L x 6"W.....\$119



5202
Pitco Basket Support Rack, Full 13-1/2"L x 13-1/2"W\$119



5203
Pitco Basket Support Rack 13-1/2"L x 17-1/2"W\$119

SHORTENING SHUTTLE®



Shortening Shuttle® **\$685**

- **STOPS HOT OIL BUCKET BURNS!**
- **SAVES 30-50%** on labor costs and lowers your liability exposure

DMI Part #	8368	8368-S
Model #	SS-611-T	SS-611-TL
Capacity	80 Lbs. / 10.5 Gal.	60 Lbs. / 9 Gal.
Min. Fryer Drain Hgt.	11.5 in.	9.9 in.
Max. Waste Cont. Hgt.	49.5 in.	49.5 in.
Overall Dimensions	12"W x 12"H x 58"L	12"W x 10"H x



8368-1 Wall Hook.....**\$16**



8368-2 Top Handle **\$31**

8368-3 Wheel Handle **\$49**



8368-4 Single Wheel **\$47**

Manufactured by Worcester Industrial Products, Worcester, MA.



8247-1 Super Swivel,
1" NPT **\$145**



GAS HOSE, 1" NPT
8244 36" Length.....**\$175**
8244-48 48" Length.....**\$199**



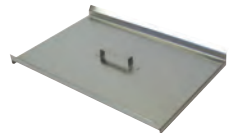
8246-1 Quick Disconnect,
1" NPT **\$32**



8369-2 Universal
Fry Basket Hanger..... **\$119**



8378 Fryer Drain
Extension Pipe **\$55**



8378-1 Vat Cover,
Frymaster Gas..... **\$79**

FRY BAGGING SCOOPS



8371
Plastic, Dual Handle \$19



8371-1
Plastic, Right Hand \$19

8371-2
Plastic, Left Hand \$19



8371-DH
Metal, Dual Handle \$19



8371-RH
Metal, Right Hand \$19

8371-LH
Metal, Left Hand \$19



5634 Grate Comb for
Forced Air Fry Station \$10



8371-OR
Onion Ring Scoop \$30



8379
Fry Waste Bucket \$15

ACCUSALT SHAKER



8440 AccuSalt Shaker with
6.5 g Gray Insert Cover \$55



8440-3
Insert Container \$11



8439 AccuSalt Shaker with
3.7 g Black Insert Cover \$55



8440-1
Amber End Cap \$11



8440-4
Body Only \$31



8439-1
Black End Cap \$14



8440-2
Gray Insert Cover, 6.5 g \$11



8439-2
Black Insert Cover, 3.7 g \$10

Fryer Cleaning Scoop

8374 Frymaster (23" length) \$49

5204 Pitco (19" length)..... \$42



Fryer Cleaning J-Rod

8374-1 Frymaster (29" length)\$15

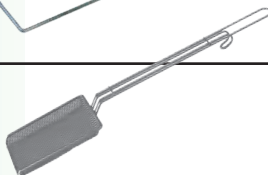
5200 Pitco (21" length).....\$59



8374-2

Fryer Skimmer, Rectangular \$27

(20" length, 4" width)



8374-2A

Fryer Skimmer, Square\$14

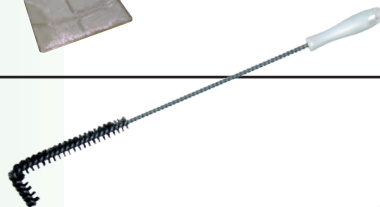
(19-1/2" length, 6-1/2" width)



8374-3

Fryer Brush, Right Angle.....\$12

(21" length)



8374-4

Fryer Brush, Straight.....\$12

(23" length)



8430

Ice/Shortening Scoop, 58 oz.....\$25

(14-1/2" length)



8432

Shortening Ladle, 32 oz.....\$25

(19" length)





- 8367**
Shortening Saver **\$165**
• Fits on top of standard 5 gal. pail
• Keeps crumbs out of fryers/multipots



- 8376**
Shortening Test Kit **\$16**
8376-D
Dropper Only **\$6**



- 8377**
3M Oil Quality Test Strips,
40/Bottle **\$27**



- 5549**
Vito® 50/80 Filters,
Box of 100 **\$209**



- 5535**
Plain Paper Filters, 16.5" x 25"
Case of 100 **\$55**



- 5550**
Plain Paper Envelopes w/ Center
Hole through one side, 19" x 20.5"
Case of 100 **\$132**



SCOTCH-BRITE™ FRYER & KITCHEN CLEANING TOOL

- 8373**
Starter Set (Includes 1 Tool, Each of 3 Interchangeable Cleaning Pads **\$47**
3 Powerful Positions



Acute Position
POWER SCRUBBING



Extended Position
LONGER REACH



Right Position
HARD SPOTS

INTERCHANGEABLE CLEANING PADS FOR #8373 TOOL

Can be used wet or dry at temperatures up to 350°F



- 8373-1**
Gray Heavy Duty Pads..6-pk **\$12**



- 8373-2**
Green Medium Duty Pads..6-pk **\$12**

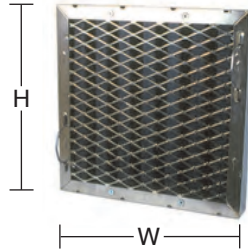


- 8373-3**
Blue Low Scratch Pads..6-pk **\$12**



DELUX Teflon Coated Type I Hood Filters

- 94% Efficient at Grease Extraction
- Spark Arrestor Frame
- Bale Handles Included

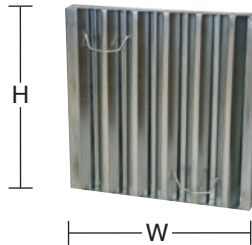


Part #	Trade Size H x W	Actual Dimensions H x W x D	Price
8380-T	10 x 16	9-1/2 x 15-1/2 x 1-7/8	\$149
8381-T	10 x 20	9-1/2 x 19-1/2 x 1-7/8	\$149
8382-T	16 x 16	15-1/2 x 15-1/2 x 1-7/8	\$151
8383-T	16 x 20	15-1/2 x 19-1/2 x 1-7/8	\$153
8385-T	20 X 16	19-1/2 x 15-1/2 x 1-7/8	\$153
8384-T	20 x 20	19-1/2 x 19-1/2 x 1-7/8	\$159



ECONO Steel Hood Filters

- Unique "Frameless" Design Maximizes Capture Area
- Lightweight
- Bale Handles Included



Part #	Trade Size H x W	Actual Dimensions H x W x D	Price
8380-S	10 x 16	9-1/2 x 15-1/2 x 1-5/8	\$69
8381-S	10 x 20	9-1/2 x 19-1/2 x 1-5/8	\$69
8382-S	16 x 16	15-1/2 x 15-1/2 x 1-5/8	\$75
8383-S	16 x 20	15-1/2 x 19-1/2 x 1-5/8	\$81
8385-S	20 X 16	19-1/2 x 15-1/2 x 1-5/8	\$81
8384-S	20 x 20	19-1/2 x 19-1/2 x 1-5/8	\$85

ORDERING TIPS

- Please order with the **Height (H)** dimension first and the **Width (W)** dimension second
- Filters should always be installed with the baffles running in the Vertical (top to bottom) position

- **LENGTHENS OIL LIFE** - Clarifies, brightens & freshens shortening more effectively than competitive products.
- **IMPROVES FOOD QUALITY** - Less oil absorbed into food.
- **SPECIAL INGREDIENT** - FRI-MOR™ filter powder (in the pad) chemically alters the oil to remove impurities.
- **CONVENIENT** - Compact 30-day packaging. Easy to store and easy to monitor frequency of shortening filtration.
- **SAVES MONEY** - Less add-back in fryers reduces excessive top-off with the more expensive oil.



See page 36 for
Vito® and Plain
Paper Filters.

ENVELOPES			
DMI# (Gycor #)	Dimensions	Description	Price per Case of 30
5506 (ESA-149)	16" x 16" 1.125" Center Hole (through one side)	Filter Screen Adapter	\$63
5509 (ESA-126)	13.75" x 20.375" 1.50" Center Hole (through one side)	Filter Screen Adapter	\$66
5516 (ESA-154)	11" x 19" 0.75" Side Hole (through both sides)	Filter Screen Adapter	\$59
5520 (ESA-103)	16.75" x 22.5" 0.6875" Side Hole (through one side)	Filter Screen Adapter	\$89
5525 (ESA-161)	17.5" x 21" 1.50" Side Hole (through one side)	Filter Screen Adapter	\$82
5511 (ESA-124)	13" x 13" No Hole	F.A.S.T. Portable (No retrofit)	\$55
5515 (CH-1630)	14" x 15" 0.875" Center Hole (through both sides)	F.A.S.T. Portable (retrofit w/center stand pipe)	\$49
5507 (ESA-153)	11" x 20" 0.75" Center Hole (through both sides)	Low Boy (J50S) Portable	\$61
5522 (ESA-169)	11" x 20" 1.5" Center Hole (through one side)	Low Boy (J50SA), Frontline Portable	\$61
5508 (ESA-129)	19" x 20.5" 1.375" Center Hole (through one side)	Pitco Built-In	\$86
5527 (ESA-105)	14.25" x 22.5" 1.5" Off-Center Hole (through one side)	Henny Penny Built-In	\$71
5528 (ESA-156)	23" x 32" 1.5" Side Hole (through one side)	UltraFryer	\$117



AUTOSHIP PROGRAM

All Gycor products can be set up for DMI's convenient Autoship Program. Call 1-800-238-5384 today. Never worry about forgetting to order again!



SHEETS

DMI# (Gycor#)	Dimensions	Description	Price Per Case of 30
5500 (SSA-140)	14.5" x 21.75"	Frymaster FP3 & Pro Series Built-In	\$41
5501 (SSA-109)	12.5" x 21.5"	Frymaster FP1, FP2, FM2 Built-In	\$39
5503 (SSA-108)	12.5" x 18"	Frymaster FM1 Built-In	\$37
5517 (SSA-115)	14.1875" x 29.1875"	Frymaster Built-In	\$44
5524 (SSA-1504)	11.25" x 19.125" Thicker Grade *	Frymaster OCF Pitco ROV / SSHLV	\$43
5505 (SSA-117)	16.375" x 24.375"	Dean / Frymaster Built-In	\$51
5510 (SSA-116)	16.375" x 18.375"	Dean / Frymaster Portable	\$41
5526 (ESA-1164)	16.375" x 18.375" Thicker Grade *	Dean / Frymaster Portable	\$55
5504 (SSA-125)	9.625" x 15"	Filtercorp Adapter F-16	\$41
5504-1 (G-100)		Gasket for use with F-16 Pads	ea. \$24
5523 (SSA-170)	12.5" x 15"	Filtercorp Adapter F-40	\$46
5523-1 (G-200)		Gasket for use with F-40 Pads	ea. \$30
5502 (SSA-150)	11.25" x 19.125"	Pitco SGH50 & AG14S Built-In	\$36
5512 (SSA-113)	13.5" x 24"	Pitco Portable P14	\$39
5519 (SSA-135)	17.5" x 28"	Pitco / Dar Pro Portable P18, P24, P34	\$54
5518 (SSA-168)	18" x 25"	RTI System	\$48

* Thicker Grade Pads are made from a heavier material for a faster flow rate.

CIRCLES

5513 (CSA-134)	21.875" Diam. No Hole	Renu Portable	\$59
5514 (CSA-120)	21.875" Diam. 1.625" Center Hole	Prince Castle Portable	\$59



- Fast Reading (Approx. 1 second)
- Runs on 2 AAA Batteries (included)
- Memory for last 10 readings

8413
Infrared Forehead Thermometer \$79

Check out other **NEW** items from DMI that will help with your COVID-19 operating plan!

Disposable Face Masks
see page 26

Hand Sanitizer Stands
see page 27

ATKINS AQUATUFF™ 351 WRAP AND STOW SERIES DIGITAL THERMOMETER



8415-BP Thermometer with
Bell (Surface) Probe.....\$259



8415-NP Thermometer with
Needle Probe \$259

- **-100°F to 500°F**
- IPX7 Waterproof rated
- Auto shut-off
- 2 AAA Batteries included
- Wrap & Stow™ Probe can easily be replaced in the field without recalibration



8415-1 Bell (Surface)
Probe Only.....\$95



8415-2 Needle
Probe Only \$95



8415-3 Battery Cover..... \$19



8415-4 Thermocouple
Solid Simulator \$45

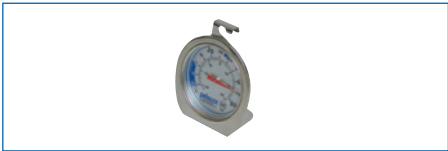
- The Solid Simulator simulates food product temperature in changing ambient conditions of any refrigerator, freezer or walk-in.
- The temperature of the Solid Simulator will display immediately when plugged into your Atkins 351 Series Digital Thermometer



8410 Pocket Thermometer, 1" Dial.....\$9
0°F to 220°F



8411 Pocket Thermometer, Digital w/Hold\$29
-58°F to 302°F



8409 Cooler Thermometer, Metal\$9
-20°F to 80°F

- Hangs or stands for easy installation
- HACCP Safe Zones



8409-1 Cooler Thermometer, Plastic\$4
-40°F to 120°F

- Space saving design
- HACCP Safe Zones



8416 Electronic Timer / Clock / Stopwatch.....\$25

- Counts up or down
- Memory recall
- Easel stand, wire hanger, clip-on or magnet mount



8419 Microwave Wattage Tester.....\$115



8418 Digital Portion Scale\$47

- Displays in Ounces, Pounds + Ounces, or Grams (Graduation 0.05 ounce)
- Automatic Shut-Off
- 2 AA batteries included
- 11 Lb. Capacity



8417 Mechanical Portion Scale\$49

- Contoured stainless steel platform holds bagged items: fries, tacos, shrimp
- Easy to read dial
- 16oz. Capacity (Graduation 0.25 ounce)
- Compact, space-saving design

VEGETABLE CHOPPERS

NEMCO EASY CHOPPER™



8580-2 (N55500-2) Chopper, 3/8" Cut.....\$259

- Fast, easy chopping of onions, tomatoes, potatoes, celery and peppers
- **3-1/4" square cutting area**
- Consistent cut size for portion control
- Blade & holder assembly easily replaceable



8582-2 Blade Assy,
3/8" Cut \$117



8581-2 Push Block,
3/8" Cut \$26



8583 Push Block
Guide \$58



8583-S Thumb
Screw for Push
Block Guide..... \$2

NEMCO EASY CHOPPER II™



8590-2 (N56500-2) Chopper, 3/8" Cut.....\$359

- Fast, easy chopping of onions, tomatoes, potatoes, celery and peppers
- **4-1/4" square cutting area**
- Consistent cut size for portion control
- A 1/3 size, 2" deep food pan fits beneath the Easy Chopper II



8592-2 Blade Assy,
3/8" Cut \$159



8591-2 Push Block,
3/8" Cut \$31



8593 Push Block
Guide \$69



8593-S Thumb
Screw for Push
Block Guide..... \$2.25

FOR BOTH NEMCO EASY CHOPPER™ AND EASY CHOPPER II™



8902
Foot Pad..... \$3.50 ea



8579
Bumper \$4



8578
Handle \$55



8578-S Screw
For Handle..... \$1.50

NEMCO EASY SLICER VEGETABLE CUTTER



8560 (N55200AN) Slicer, Adjustable Cut\$489

- Compact, portable, and easy to use
- Set the desired thickness by turning a thumb screw (calibrated in 1/16" increments to a maximum of 1/2")
- Mounting base (sold separately) attaches easily to countertops or other flat surfaces



8560-1 Blade Set, Adjustable Cut..... \$59



8563 Shaft Lock Assembly \$25



8561 Guard \$65



8565 Portable Base..... \$189

CUT RESISTANT GLOVES

Tucker Red Glove \$18 ea

- 8405-S** Small
- 8405-M** Medium
- 8405-L** Large



White/Blue Glove \$18 ea

- 8404-S** Small
- 8404-M** Medium
- 8404-L** Large



8549 Vegetable Slicer Blade Brush \$29



8551 Tomato Core-It..... \$3.50



VEGETABLE SLICERS

NEMCO EASY TOMATO SLICER

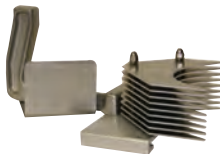


- 8556** (N55600-2) Slicer, 1/4" Blades.....**\$335**
8556-A (N55600-1) Slicer, 3/16" Blades.....**\$335**

- Cleanly cut mounds of uniformly sliced tomatoes in seconds
- Razor sharp stainless steel blades
- Unique design provides long life



- 8556-1** Blade Set, 1/4" (10 Blades).....**\$45**
8556-1A Blade Set, 3/16" (13 Blades).....**\$45**



- 8556-4** Pusher Head, 1/4".....**\$139**
8556-4A Pusher Head, 3/16".....**\$139**

NEMCO EASY TOMATO SLICER II™

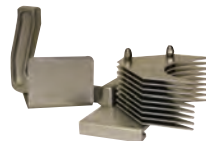


- 8557** (N56600-2) Slicer, 1/4" Blades.....**\$409**
8557-A (N56600-1) Slicer, 3/16" Blades.....**\$409**

- No need to adjust the blades
- New Pretensioned blade cartridge maximizes safety and blade longevity
- Blades are razor sharp stainless steel for a smooth, precise cut



- 8557-1** Blade Set, 1/4" (11 Blades).....**\$84**
8557-1A Blade Set, 3/16" (14 Blades).....**\$84**



- 8557-4** Pusher Head, 1/4".....**\$149**
8557-4A Pusher Head, 3/16".....**\$165**



- 8902**
 Foot Pad.....**\$3.50 ea**

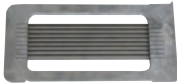
**We carry additional replacement parts
 for Nemco Slicers and Choppers.**

**Call 1-800-238-5384 for pricing
 and availability.**

PRINCE CASTLE TOMATO SABER 943 SERIES

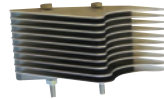


- 8550** Slicer, 1/4" Blades included (9 Blades) **\$469**
- 8550-H** Slicer, 1/4" Blades included (11 Blades, High Yield) **\$469**
- Perma-Tight blade cartridge system never needs adjustment
- Tomato Catcher reduces clean-up and improves food safety



8550-1 Blade Set, 1/4" (9 Blades)..... **\$94**

8550-1H Blade Set, 1/4" (11 Blades, High Yield)..... **\$99**



8550-4 Pusher Head, 1/4"..... **\$79**

Works with both the 9 and 11 blade 1/4" sets.



8550-2
Catcher, Red Plastic..... **\$31**



8550-3
Pusher Handle, Red Plastic..... **\$34**



8550-6
Guide Rod Bearing..... **ea. \$12**



8550-7
Guide Rod Cushions **4-pk \$26**



8550-5
Replacement Feet..... **4-pk \$15**

LINCOLN/REDCO TOMATO PRO MODEL 0644N



8553-1
Blade Set, 1/4" (11 Blades) **\$72**



8553-4
Pusher Head, 1/4" **\$249**

TONGS



6" Plastic \$2.75

8420-BK Black

8420-R Red

8420-G Green



9" Plastic \$3.50

8422-B Blue

8422-R Red

8422-G Green



12" Plastic \$5.50

8423-B Blue

8423-R Red



8424

9" Steel Lift N Grip \$9.00

8425

12" Steel Lift N Grip \$9.00

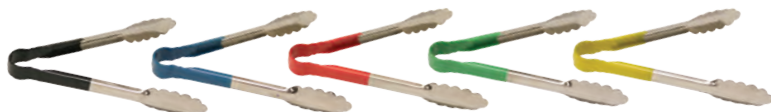


9009

9" Steel Scalloped \$9.00

9012

12" Steel Scalloped \$9.00



9" Metal with Plastic Coated Handle \$10.00

9009-BK Black

9009-B Blue

9009-R Red

9009-G Green

9009-Y Yellow



9050-BK

Refillable Grease Pencils,
Black, Box of 12 \$14



9051-BK

Pencil Refills, Black,
Box of 72 \$9



8426-BK Black Solid
Spoon, 1/4 oz. **\$3**



8427-G Green Solid
Spoon, 1/2 oz. **\$3**



8427-T Tan Solid
Spoon, 1/2 oz. **\$3**



8428-BR Brown Solid
Spoon, 3/4 oz. ... **\$3.50**



8428-R Red Solid
Spoon, 3/4 oz. ... **\$3.50**



8428-C Clear Solid
Spoon, 3/4 oz. ... **\$3.50**



8429-BR Brown Slotted
Spoon, 3/4 oz. ... **\$3.50**

SOLID SHORT MEASUREMISERS



9008 Red Portion
Cup, 2 oz. **\$7.75**



10520-R Red
Markings, 2 oz. **\$8**



10520-B Blue
Markings, 3 oz. **\$8**



10520-G Green
Markings, 4 oz. **\$8**

SOLID LONG MEASUREMISERS



10522-P Purple
Markings, 1-1/2 oz. **\$7**



10522-R Red
Markings, 2 oz. **\$8**



10522-B Blue
Markings, 3 oz. **\$8**



10522-G Green
Markings, 4 oz. **\$8**



9003
Green Dish, 3-1/4 oz., #12. **\$7.50**



9004
Yellow Dish, 2 oz., #20. **\$7.50**



9002
Ice Cream Spade. **\$10.00**



8471
Lettuce Knife,
Green Plastic.....**\$4.50**



8472
Lettuce Knife,
Green Handle**\$15**



8433-W
10" Scalloped Knife,
White Handle**\$14**



8433-BK
10" Scalloped Knife,
Black Handle**\$14**



10530-W
10" Chopping Knife,
White Handle**\$36**



10532-W
6" Scalloped Utility Knife,
White Handle**\$18**



8442
Chicken Cutter/
Scoop.....**\$16**



8470-G
Saf-T-Grip Cutting Board,
12" x 18" Green**\$25**



8470-W
Saf-T-Grip Cutting Board,
12" x 18" White**\$25**



8443
Saf-T- Grip Cutting Board,
6" x 9" White**\$9**

Visit us online at
the **NEW & improved**
www.dmiparts.com
and see how simple it
is to search for parts
and place orders 24/7

The screenshot shows the DMI website interface. At the top, there's a navigation bar with 'Home', 'Products', 'Services', 'Contact Us', and 'About Us'. Below that, a large red banner reads 'LARGE VARIETY OF PRODUCTS' and 'Equipment parts and Millions accessories to keep you up and running.' The DMI logo is prominently displayed. On the left, there's a sidebar menu with categories like 'Accessories', 'Saw Blades', 'Saw Chains', etc. At the bottom left, there's a box that says 'ENROLL IN AUTO SHIP' with a 'LEARN MORE' button. The bottom right shows various kitchen and utility items like a juicer, a kettle, and a brush.



9005
Wire Whisk, 12"..... \$6



8434
Spatula/Sandwich Spreader,
Plastic..... \$2



8441
Amber Spatula \$6



10540-W
Metal Spatula, 6" x 3",
White Handle..... \$31



10542-W
Metal Spatula, 8" x 3",
White Handle..... \$27



10543
Metal Spatula, 8" x 3",
Long Wooden Handle..... \$38



10506
Plastic Bowl / Dough
Scraper \$1



8446
Brown Salad Crock with
Clear Lid, 1.2 qt. \$8



8444
Clear Powdered Sugar
Shaker with Top..... \$6



10500-BK
Plastic Oval Basket,
Black..... 12pk \$12



Black Food Tray
10502-BK 10" x 14"..... \$3
10503-BK 14" x 18"..... \$4



Orange Food Tray
10503-O 14" x 18"..... \$4

ACCUSALT SHAKER



8440 AccuSalt Shaker with
6.5 g Gray Insert Cover..... **\$55**



8440-3
Insert Container **\$11**



8439 AccuSalt Shaker with
3.7 g Black Insert Cover **\$55**



8440-1
Amber End Cap **\$11**



8440-4
Body Only **\$31**



8439-1
Black End Cap **\$14**



8440-2
Gray Insert Cover, 6.5 g..... **\$11**



8439-2
Black Insert Cover, 3.7 g **\$10**

ACCUTASTE™ SEASONING DISPENSER



9022
AccuTaste™ Seasoning Dispenser , .35cc Gray Unit **\$49**

- Patented design provides accurate, repeatable and functional dispensing of a premeasured dose
- Hinged lid allows for easy refill
- Designed for easy cleaning without disassembly



9020-1
Lid Only **\$6**



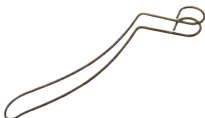
9020-2
Body Subassembly **\$28**



9022-1 Gray Base
Subassembly, .35cc..... **\$19**



9020-3
Pin Only **\$2**



9020-4
Spring Only **\$7**



9020-5
Thumbscrew Only **\$2**

SQUEEZE BOTTLES



8436 Clear Squeeze Bottle with Clear Cap, 12 oz. **\$1.75**

9007 Clear Squeeze Bottle with Clear Cap, 24 oz. **\$2.00**



8435-C
Clear Cap Only
(small opening).... **\$.75**



8435-B
Blue Cap Only
(large opening) ... **\$.75**



8435-G
Green Cap Only
(large opening) **\$1.00**



8460-S FIFO Bottle with Green (Small) Valve Cap, 12oz **\$2.50**

8460-L FIFO Bottle with Blue (Large) Valve Cap, 12oz **\$2.50**



8464
White End/Label
Cap Only **\$1.00**



8465-S
Green (Small) Valve
Cap Only **\$1.50**



8465-L
Blue (Large)Valve
Cap Only **\$1.50**



8460-R Squeeze Bottle with Red Dispensing and End Caps, 12oz **\$2.50**



8464-R
Red End
Cap Only **\$1.00**



8465-R
Red Dispensing
Cap Only **\$1.50**

KETCHUP DISPENSER PARTS



8520 (83910)
Server Ketchup Pump
w/Locking Lid **\$215**



8522 (84031)
7 Quart Insert/Base for #8520
Server Ketchup Pump..... **\$49**



8521 (82533)
Spare Parts Kit for #8520
Server Ketchup Pump .. **\$14**



8523 (82016)
Spring for #8520 Server
Ketchup Pump **\$2**

ICEZONE®-X SANITATION SYSTEM



9030
IceZone X-30 **\$395**

9030-B
Replacement UV Bulb **\$85**

- Keeps ice machines, ice bins, and beverage dispensers clean
- Prevents slime and mold
- Reduces bacteria, yeast and other microorganisms
- Reduces equipment cleanings and associated costs
- The only NSF certified sanitation
- Maintenance free - requires a simple annual UV lamp replacement
- Approved by all major ice machine manufacturers



Sample instal-

NOTE: There are several mounting options



8450
Saf-T-Ice® Tote, 6 Gallon **\$63**

Use dedicated ice-only containers and utensils to keep ice protected, sanitary and your customers safe.



8430
Ice/Shortening Scoop,
Metal, 58 oz.
(14-1/2" length) ... **\$25**



8431
Ice Scoop, Plastic, 12 oz.
(11-1/2" length) **\$7**



8432
Shortening Ladle,
32 oz. (19" length) ... **\$25**

SAF-T-SCOOP® & GUARDIAN SYSTEM™



12-16 ounce
For Beverage Station:

8452
Guardian System™
(includes Scoop, Holder &
Mounting Tools) **\$63**

8452-1
Replacement Scoop only .. **\$25**



64-86 ounce
For Ice Machines:

8453
Guardian System™
(includes Scoop, Holder &
Mounting Tools) **\$99**

8453-1
Replacement Scoop only .. **\$37**

SAFETY COATED – TEARDROP SHAPE



60 WATT COATED, 120V

8365.....	
\$6.50.....	
8365-06.....	\$34 6-pack

INFRA-RED HEAT LAMP – CLEAR



375 WATT, 120V

8366.....	\$12.50
8366-06.....	\$66 6-pack
375 WATT COATED, 120V	
8366C.....	\$20
8366C-06.....	\$108 6-pack

125 WATT, 120V

8395.....	\$8
8395-06.....	\$43 6-pack
125 WATT COATED, 120V	
8395C.....	\$16
8395C-06.....	\$86 6-pack

250 WATT, 120V

8396.....	\$8
8396-06.....	\$43 6-pack
250 WATT COATED, 120V	
8396C.....	\$16
8396C-06.....	\$86 6-pack

**SAVE 10% WHEN YOU PURCHASE
BULBS IN A 6-PACK!**

SAFETY COATED – TRADITIONAL SHAPE



40 WATT COATED, 130V

8398.....	\$6
8398-06.....	\$32 6-pack

60 WATT COATED, 130V

8399.....	
\$6.....	
8399-06.....	\$32 6-pack

40 WATT COATED, 250V

8391.....	\$9
8391-06.....	\$49 6-pack

There are several convenient ways to place your order with DMI

1-800-238-5384
weekdays 8:15 am to 5:00 pm

Or order anytime:

www.dmi.parts.com
orders@dmiparts.com
866-302-9397



Pan



Flat Lid



Lid w/Handle



Drain Rack

Clear Pans - For Cold Food (-40°F to +210°F)

	Part #	Description	Price
FULL SIZE 20-7/8" x 12-3/4"	8751-2	Pan, 2-1/2" Deep	\$13.00
	8751-6	Pan, 6" Deep	\$22.00
	8751-HL	Pan Lid w/Handle	\$12.00
	8751-NL	Pan Lid w/Handle & Notch	\$12.00
	8751-1	Drain Rack	\$11.00
1/2 SIZE 10-7/16" x 12-3/4"	8752-2	Pan, 2-1/2" Deep	\$8.00
	8752-4	Pan, 4" Deep	\$9.50
	8752-6	Pan, 6" Deep	\$12.00
	8752-FL	Pan Lid - Flat	\$6.50
	8752-HL	Pan Lid w/Handle	\$6.50
1/3 SIZE 6-15/16" x 12-3/4"	8753-2	Pan, 2-1/2" Deep	\$6.50
	8753-4	Pan, 4" Deep	\$8.50
	8753-6	Pan, 6" Deep	\$9.00
	8753-FL	Pan Lid - Flat	\$5.00
	8753-HL	Pan Lid w/Handle	\$5.00
1/6 SIZE 6-3/8" x 6-15/16"	8756-4	Pan, 4" Deep	\$5.00
	8756-6	Pan, 6" Deep	\$6.50
	8756-FL	Pan Lid - Flat	\$3.75
	8756-HL	Pan Lid w/Handle	\$4.25
	8756-NL	Pan Lid w/Handle & Notch	\$4.25
1/9 SIZE 4-1/4" x 6-15/16"	8759-4	Pan, 4" Deep	\$5.50
	8759-FL	Pan Lid - Flat	\$3.75
	8759-NL	Pan Lid - Flat w/Notch	\$3.75
	8759-1	Drain Rack	\$2.00

Commonly Ordered Clear Food Pans:

8752-2

1/2 Size, 2-1/2" Deep:
Tomatoes

8752-4

1/2 Size, 4" Deep:
Lettuce

8753-4

1/3 Size, 4" Deep:
Pickles / Onions

8756-4

1/6 Size, 4" Deep:
Red Onions / Cheese



Pan



Lid w/Handle



Lid w/Handle & Notch



Drain Rack

Amber Pans - For Hot Food (-40°F to +300°F)

	Part #	Description	Price
FULL SIZE 20-7/8" x 12-3/4"	8741-6	Pan, 6" Deep	\$69.00
	8741-HL	Pan Lid w/Handle	\$44.00
1/2 SIZE 10-7/16" x 12-3/4"	8742-2	Pan, 2-1/2" Deep	\$21.00
	8742-6	Pan 6" Deep	\$37.00
	8742-HL	Pan Lid w/Handle	\$20.00
	8742-1	Drain Rack	\$14.50
1/3 SIZE 6-15/16" x 12-3/4"	8743-2	Pan, 2-1/2" Deep	\$19.00
	8743-4	Pan, 4" Deep	\$23.50
	8743-6	Pan, 6" Deep	\$31.00
	8743-HL	Pan Lid w/Handle	\$15.00
	8743-NL	Pan Lid w/Handle & Notch	\$15.00
	8743-1	Drain Rack	\$9.00
1/4 SIZE 6-3/8" x 10-7/16"	8744-4	Pan, 4" Deep	\$21.00
	8744-6	Pan, 6" Deep	\$25.00
	8744-HL	Pan Lid w/Handle	\$11.00
	8744-1	Drain Rack	\$10.00
1/6 SIZE 6-3/8" x 6-15/16"	8746-2	Pan, 2-1/2" Deep	\$13.00
	8746-4	Pan, 4" Deep	\$16.00
	8746-6	Pan, 6" Deep	\$18.50
	8746-HL	Pan Lid w/Handle	\$10.00
	8746-NL	Pan Lid w/Handle & Notch	\$10.00
	8746-1	Drain Rack	\$5.00
1/9 SIZE 4-1/4" x 6-15/16"	8749-2	Pan, 2-1/2" Deep	\$10.00
	8749-FL	Pan Lid - Flat	\$7.00



Pan



Lid w/Handle



Lid w/Handle & Notch



Drain Rack

Stainless Steel Pans

	Part#	Description	Price
1/2 SIZE 10.4" x 12.8"	8762-2	Pan, 2-1/2" Deep	\$15.00
	8762-4	Pan, 4" Deep	\$17.00
	8762-6	Pan, 6" Deep	\$21.00
	8762-HL	Pan Lid w/Handle	\$11.00
	8762-1	Drain Rack	\$22.00
1/3 SIZE 6.9" x 12.8"	8763-4	Pan, 4" Deep	\$14.00
	8763-6	Pan, 6" Deep	\$21.00
	8763-HL	Pan Lid w/Handle	\$10.00
	8763-NL	Pan Lid w/Handle & Notch	\$10.00
8704 1/3 Size Wire Mesh Drain Rack	\$4.75	8707 1/3 Size Stainless Steel Drain Rack	\$6.95
1/6 SIZE 6.4" x 7.0"	8766-4	Pan, 4" Deep	\$11.00
	8766-6	Pan, 6" Deep	\$15.00
	8766-HL	Pan Lid w/Handle	\$9.00
	8766-NL	Pan Lid w/Handle & Notch	\$9.00
	8766-1	Drain Rack	\$15.50
1/9 SIZE 4.3" x 6.9"	8769-4	Pan, 4" Deep	\$11.00
	8769-NL	Pan Lid w/Handle & Notch	\$8.00



8736-4
1/6 Size Pan, 4" Deep, Black..... **\$15**
(6-3/8" x 6-15/16") (-40°F to +375°F)



8737
Coldmaster Whipped Cream
Can Chiller, Black..... **\$45**



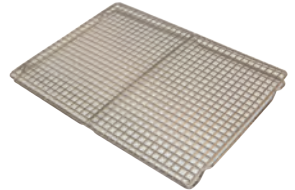
8738
Coldmaster Insulated Food
Pan, Black..... **\$49**



8446
Brown Salad Crock with
Clear Lid, 1.2qt. **\$8**



8495
1/2 Size Aluminum Baking Pan,
12-7/8" X 17-3/4" **\$10**



8496
1/2 Size Wire Pan Insert,
11-7/8" X 16-3/8" **\$24**



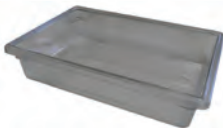
8437
Bacon Microwave Tray..... **2-pack \$17**



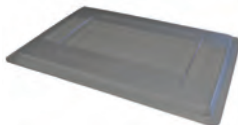
8437-1
Microwave Shelf for
Bacon Trays **\$14**



8438
Stackable Bacon Microwave
Trays **4-pack \$45**



8760
Lettuce Storage Box,
18" X 26" X 6" **\$43**



8760-FL
Lettuce Storage Box Lid,
18" X 26" **\$20**



8760-C
Lettuce Storage Box
Colander, 18" X 26" **\$33**



10510-W
Food Box, 18" x 26" x 6", White..... **\$32**



10511-W
Food Box Lid, 18" x 26", White **\$19**



10512-C
Food Box, 18" x 12" x 6", Clear..... **\$21**



10513-C
Food Box Lid, 18" x 12", Clear **\$9.50**



10512-R
Food Box, 18" x 12" x 6", Red..... **\$24**



10513-R
Food Box Lid, 18" x 12", Red **\$11**



10512-W
Food Box, 18" x 12" x 6", White..... **\$19**



10513-W
Food Box Lid, 18" x 12", White **\$12**



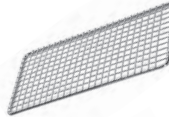
8706
Single Handle Pan, Amber each **\$19.95**



8700
Dual Handle Pan, Amber6-pack **\$119**



8743-1
1/3 Size Amber
Drain Rack **\$9.00**



8704
1/3 Size Wire Mesh
Drain Rack **\$4.75**

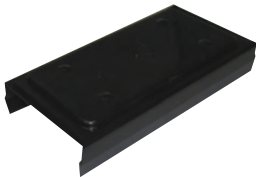


8707
1/3 Size Stainless Steel
Drain Rack **\$6.95**

SPECIAL BULK DISCOUNT OFFER:

Place an order for Six 6-Packs of DMI's
Dual Handle Pans (36 pans) and **SAVE 10%!**
(price per 6-pack drops from \$119 to **\$107.10**)

FOR PRINCE CASTLE UNITS



8703
Prince Castle Black Cover **\$39**

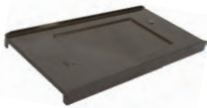


8855-M
Prince Castle Timer Overlay Kit, Main **\$75**
(Has red & blue arrows & says "Menu", "Enter", "BKFT" & "Reg")



8855-A
Prince Castle Timer Overlay Kit, Aux **\$75**

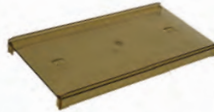
FOR DUKE UNITS



8702-S
Solid Brown
Cover **\$25**



8702-V
Vented Tan
Cover **\$25**



8705-S
Solid Amber
Cover **\$16.50**



8705-V
Vented Amber
Cover **\$16.50**

Maximize Oil Frylife
and Quality

Order Gycor
Filters from DMI



The Gycor Advantage

Saves Money. Longer oil life, less oil absorbed means lower costs and better fried products
Cleaner. No loose powder
Compact 30-day packaging. Easy to store and track replacement usage.



The DMI Advantage

DMI stocks more than 25 different sizes of Gycor filter pad sheets and envelopes for Frymaster, Dean, Pitco, Henny Penny, UltraFryer, RTI systems and more!
Never forget to order again! Sign up for DMI's Convenient Autoship Program.

See p. 38-39 for details



1-800-238-5384

www.dmiparts.com

dmiTM
MANUFACTURING, INC.
7177 Industrial Park Blvd.
Mentor, OH 44060

Presort Std
U.S. Postage
PAID
Mentor, OH
Permit No. 238