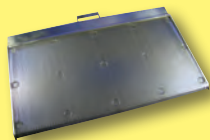
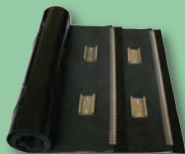




*Your Reliable Source For Equipment Parts
& Smallwares Since 1997*



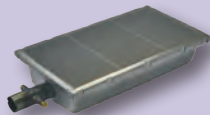
Broiler Parts



Toaster Parts



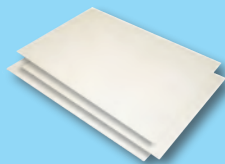
Safety Apparel



Fryer Parts



Fryer Accessories



Filter Pads



Vegetable Slicers



Smallwares



Food Pans

Look inside for these items... and more!



1-800-238-5384
www.dmiparts.com
Fax: 1-866-302-9397



July 2022

Table of Contents & Ordering Information

BROILER PARTS – Duke	3-8
BROILER PARTS – JF93 & JF94	9
BROILER PARTS – MPB94	10-13
TOASTER PARTS	
Antunes Round-Up	14-16
Prince Castle	17-20
Marshall Air.....	18
EGG COOKER PARTS	21-22
SAFETY APPAREL	23-25
MAINTENANCE	26-30
FRYER ACCESSORIES & PARTS	
Forced Air Fry Station	31
Frymaster MJ45 & H50	32-34
Fryer Tools & Accessories.....	35-39
Gycor Filter Pads.....	40-41
Hood Filters	42
OTHER	
Bulbs	43
Vegetable Slicers	44-49
Thermometers, Scales & Timers.....	50-51
Smallwares	52-59
Shake & Soft Serve & Smoothie.....	60-61
Food Pans	62-65
Holding Units	66-67

Your Customer Service Team



Mark



Denise



Dennis



RoseMary



Julie



Celina



- DMI is open from 8:15 am to 5:00 pm EST Mon-Fri. Your call will always be answered by a live customer service representative during business hours. Phone messages left after-hours will be returned on the next business day.
- Fax Website and Email are available 24 hours/7 days a week.
- There is no minimum order.
- All prices are subject to change. Check www.dmiparts.com for the most current pricing.
- For ground shipment transit times, see map on page 45.
- Part numbers listed in green are for reference only.

Toll Free Phone Orders: 800-238-5384
Toll Free Fax Orders: 866-302-9397
Local Phone Orders: 440-975-8645
Local Fax Orders: 440-975-0688
Website Orders: www.dmiparts.com
Email Orders: orders@dmiparts.com
From Mexico: 001-800-238-5384

BROILER PARTS – DUKE

Covers, Pans & Panels



4000 (600222)
Flame Arrestor \$519



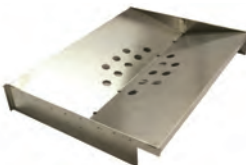
J Style Burner Tube
4008 (176370) Nat or LP Gas.... \$237
4010 (175950) High Altitude.... \$325



4012 (175200K)
Burner Shield \$403



4002 (176398)
Main Grease Pan \$151



4004 (176397)
"V" Grease Pan \$341



4006 (175351F)
Lower J Burner Panel \$188



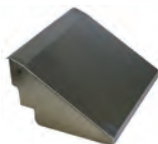
4016 (175150PS)
Pivot Ash Scraper \$259



4018 (175866PS)
Discharge Access Panel \$242



4020 (175340PS)
Discharge Chute \$394



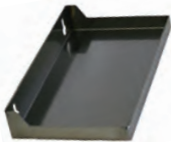
4022 (175778WELD)
Discharge Hood \$195



4028 (175358PS)
Discharge Pan \$188



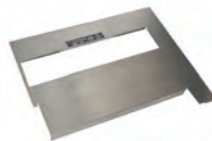
4026 (175357PS)
Side Grease Pan \$259



4024 (175353PS)
Product Pan Shelf **\$139**



4029
Splash Shield **\$31**



4030 (175300)
Front Panel **\$221**



4032 (175741PS)
Loader Ramp **\$229**



4036 (175878PS)
Loader Mounting Bracket..... **\$485**



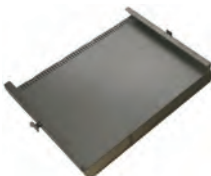
4047 (600407)
Air Brake **\$159**



4034 (175429PS)
Door **\$95**



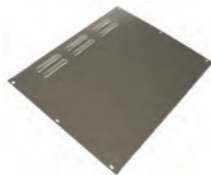
4038 (175444PS)
Loader **\$813**



4040 (175430PS)
Loader Tray **\$395**



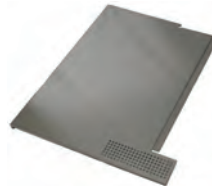
4046 (175226)
Impedance Pan (if no
optional catalyst) **\$132**



4042 (175383)
Electrical LWB Access Panel ... **\$83**



4044 (175392)
Right Side Upper Lift Off
Panel **\$57**



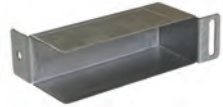
4050 (175305)
Rear Access Panel **\$245**



4100 (175780)
Infrared Upper Burner.....\$359



4136 (175535)
Upper Burner Sensor.....\$77
Lower Burner Sensor on p. 8



4138 (175380)
Ignition Cable Shield.....\$92



4086 (175536)
Igniter.....\$43



4085 (175095)
Upper Igniter Guard.....\$74



4087 (175032)
Lower Igniter Shield.....\$64



4068 (177830K)
Upper Burner Ignition
Module.....\$318



4070 (175537)
Upper Burner Ignition
Cable.....\$16



Lower Burner Ignition Module
4064 (175877) Nat Gas.....\$255
4065 (175872) LP Gas\$299



4066 (175538)
Lower Burner Ignition
Cable.....\$16



4072 (175507)
Motor Capacitor ...\$28



4074 (175516)
Transformer.....\$43



4076 (175870)
Solid State Relay . \$76



4088 (175503)
Main Power Switch.....\$20



4062 (600-250SED)
Blower, 60Hz 120VAC..... \$427



4060 (175511)
Blower Inlet Gasket.....\$4



4146 (175108)
Blower Box Cover\$218



4142 (175189)
Blower Hose.....\$21



4092 (175873/175575)
Control Board.....\$899



4094 (175510)
Control Board Gasket.....\$12



4090 (175356)
Control Board Mounting Frame..\$46



4102 (175867)
Conveyor Motor\$171



4078 (175517)
Sprocket, B21 x 3/8”
Bore (Motor).....\$27



4104 (175176)
Motor Mounting Bracket\$20



4082 (175525)
Conveyor Bushing Block.....\$23



4084 (175038PS)
Right Side Conveyor Shaft\$95





4096 (175550)
Cook Light.....\$10





Combo Valve

4120 (175531) Nat Gas \$159

4122 (175776) LP Gas \$152



Upper Front Orifices	
	4106 (175735) #40 Nat Gas \$10
	4108 (175767) #52 LP Gas \$18

Lower Burner Orifices	
	4130 (176404) #30 Nat Gas \$32
	4132 (176412) #46 LP Gas \$19



4126 (175540)

Base Connector,
Valve to tube \$10

Upper Rear Orifices	
	4110 (175736) #36 Nat Gas \$18
	4112 (175768) #51 LP Gas \$18

Orifice Holders	
	4134 (600290) Lower Burner \$28
	4118 (175542) Upper Burner \$20



4116 (175541)

Tee Compression Fitting ... \$15




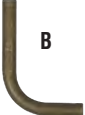
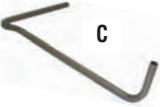
4115 (175547)

Compression Sleeve, 3/8" . \$1.50



4117 (175548)

Compression Nut, 3/8" \$2.75

Tubing Kits			
			
A	4114 (175476)	Tee to Upper Burner	\$30
	4128 (175478)	Lower Burner to Valve	\$26
C	4140 (175477)	Tee to Valve	\$86



8247

Super Swivel, 3/4" NPT \$89



GAS HOSE, 3/4" NPT

8245 36" Length \$165

8245-48 48" Length \$189



8246

Quick Disconnect, 3/4" NPT \$65

REAR, DISCHARGE SIDE & BROILER STAND COMPONENTS



4170 (175534)
Lower Burner Sensor.....**\$74**
Upper Burner Sensor on p. 5



4172 (175977)
Temperature Probe,
C-Chamber.....**\$151**



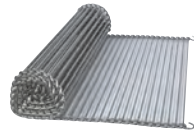
4194 (175656)
Power Cord with Orange
Plug**\$38**



4180 (175551)
Drive Chain (Complete).....**\$20**



4178 (175037PS)
Discharge Side Shaft ..**\$106**



4182 (175674)
Cook Chain (Complete)...**\$349**



4190 (175562)
Caster with Brake.....**\$40**



4192 (175563)
Caster without Brake.....**\$35**



8291
Pliers for Cook Chain.....**\$51**

TOOLS



4184 (175485)
Tube Burner Cleaning Tool**\$63**



4186 (175701)
Flame Rod Tube Cleaner.....**\$45**



4189 (175696)
Loader Tool / Socket Wrench**\$83**



4188 (175705)
Brush for Flame Rod Tube Cleaner.....**\$3**

BROILER SHEET, TAN JF93 (9-3/4" x 22-5/8")

8200.....Each **\$9.00**
 8200-06.....6-pack **\$43.00**

JF94 (9-3/4" x 28")

8201.....Each **\$8.50**
 8201-06.....6-pack **\$40.00**

FH94 (19-3/8" x 28")

8202.....Each **\$16.00**
 8202-06.....6-pack **\$77.00**



3000 (18447)
 High Pressure Blower **\$799**



3723 (25957 /17185)
 Flame Sensor, Slotted **\$67**



3068 (18861)
 Thermocouple Probe, 48" **\$59**



3040 (20786) Gear Motor,
 DC, Brushless **\$799**

3041 (178996) Sprocket,10T,
 Motor, 3/8" Bore..... **\$42**



3072 (13579)
 Motor Reversing Switch **\$26**



3718 (16921)
 Ignition Module..... **\$309**



3720 (10291)
 Igniter **\$99**



3744 (15480)
 Main On/Off Switch **\$179**



3734 (6049) Bearing,
 1" W x 1-7/8" H, 5/8" Shaft,
 Feed End **\$42**



3730 (6046) Bearing,
 1" W x 1-7/8" H, 1-1/4" Shaft,
 Discharge Outer Drive Shaft **\$45**



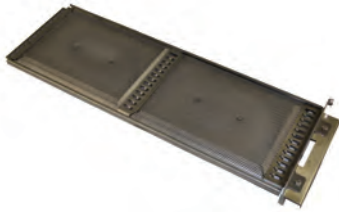
3106 (25332)
 Combination Wrench Tool.... **\$39**



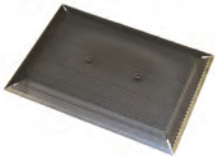
3107 (25333)
 Shaft Cleaning Tool **\$29**



3108 (23307)
 Cleaning Brush..... **\$24**



3700 (19970)
Complete Flame Arrestor Assembly.....\$475



3701 (19980)
Flame Arrestor
Insert Only\$149



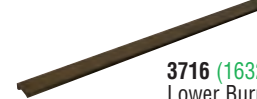
3704 (17402)
Upper Burner with Reflector..\$439



3708 (16378)
Lower Burner.....\$139



3710 (16389)
Dual Lower Burner.....\$159



3716 (16320)
Lower Burner Shield.....\$157



3714 (17372)
Upper Heat Reflector\$289



3712 (16794)
Pan Holder.....\$359



3718 (16921)
Ignition Module.....\$309



3720 (10291)
Igniter\$99



3722 (16857)
Flame Sensor, Snap-In\$39



3723 (25957 /17185)
Flame Sensor, Slotted.....\$67



8247
Super Swivel, 3/4" NPT\$89



GAS HOSE, 3/4" NPT
8245 36" Length.....\$165
8245-48 48" Length.....\$189



8246
Quick Disconnect, 3/4" NPT....\$65



8220 (2001)
Gas Pressure Gauge,
1/8" NPT\$49

8220-A (2001-01)
Lens Only.....\$3



3012 (2051)
Burner Orifice, #46, Nat Gas, . \$10



3010 (2182)
Pilot Orifice, Nat Gas..... \$10

8233 (2023)
Pilot Orifice, LP Gas..... \$9



8235-2 (2179)
Pilot Carryover Burner,.....\$32



3025 (2180)
Pilot Carryover Burner,.....\$94



8228 (2049-A)
Regulator, RV48, 1/2" NPT\$59



3027 (12741)
Solenoid Valve, 1/2 NPT,\$245

PTFE BEARINGS



3730 (6046)
1" W x 1-7/8" H, 1-1/4" Shaft,
Discharge Outer Drive Shaft \$45

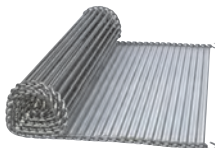


3732 (6047)
1" W x 1-7/8" H, 3/4" Shaft,
Discharge Inner Drive Shaft. \$43

3734 (6049)
1" W x 1-7/8" H, 5/8" Shaft,
Feed End\$42



3713 (16208)
Grease Pan..... \$709



3728 (6035)
Rod Belt, 13" Width\$59/ft.
5 ft. req'd on each side



8295 (6027)
#35 Drive Chain\$4/ft



3736 (14572 / 23640)
Brushless Motor, Old Style **\$1999**
Wiring harness included (not Pictured)



3737 (17932)
Brushless Motor, New Style . **\$769**

Please provide broiler serial number when ordering either of these motors.



MOTOR SPROCKETS

3738 (13770)
For 3736 Motor **\$38**

3041 (17899)
For 3737 Motor **\$42**



HEATING ELEMENTS

3740 (15691) 950W Main **\$189**

3742 (16055) 725W Flex **\$179**



3745 (18167)
On/Off Switch, 3 Position **\$369**



3744 (15480)
Main On/Off Switch **\$179**



3752 (13570-C)
Load Sensing/Temperature Control,
11 Pin **\$739**



3754 (13737)
Socket Base, 11 Pin **\$41**



TEMPERATURE PROBES

3746 (16407) Short **\$61**

3748 (16408) Long **\$61**



3750 (13727-B)
Motor Control, 8 Pin **\$519**



8266 (4136)
Control Base, 8 Pin **\$9**



8274-R (4100)
Indicator Light, Red **\$4**



3072 (13579)
Motor Reversing Switch **\$26**



3075 (16034)
Control Transformer,
115/230VAC, 24V **\$139**



3076 (12725)
Bridge Rectifier **\$31**



3756 (17409)
Flex Feed Belt (Complete) **\$419**



3758 (19306)
Main Side Bar/Chain
Assembly **\$599**



3759 (15617)
Main Side Bar Only **\$155**



3125 (15882)
Combo Clutch Assembly **\$509**



3126 (14900)
Clutched Sprocket Only **\$399**



3130 (11608)
Clutch Knob, Black **\$27**



3127 (10275)
Thrust Washer **\$5**



3128 (14896)
Bearing, Shoulder Washer **\$9**



3129 (10627)
Bearing Clip **\$3**



3724 (11730)
Orifice Brush, 1/16" Diam. **\$8**



3726 (11731)
Orifice Brush, 3/32" Diam. **\$7**



8289
Shaft Cleaning Tool **\$6**



8357
Cleaning Brush, Soft Nylon **\$13**



8291
Pliers for Rod Belt **\$51**



8359
Cleaning Brush, Hard Nylon... **\$11**



8296
#35 Chain Breaker Tool **\$55**

TOASTER PARTS

Antunes Round-Up VCT-20 Series



SAVE:
10% on 3-packs
20% on 10-packs
25% on Rolls!



BLACK/SILVER TOASTER SHEET
 (12-1/4" X 33")

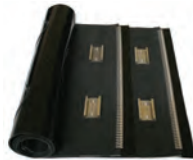
RED TOASTER SHEET
 (12-1/4" X 33")

- 8216Each **\$10.50**
- 8216-033-pack **\$28**
- 8216-1010-pack **\$84**
- 8216-Roll12-1/4" x 108ft. Continuous Roll **\$299**
 (equal to 39 sheets)

- 8217Each **\$10.50**
- 8217-033-pack **\$28**
- 8217-1010-pack **\$84**
- 8217-Roll12-1/4" x 108ft. Continuous Roll **\$305**
 (equal to 39 sheets)



All Toaster Sheets & Belts can be set up for DMI's Convenient Autoship Program. Call 1-800-238-5384 today!

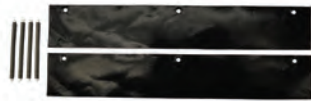


CONVEYOR BELTS, ORIGINAL

CONVEYOR BELTS, CLIP STYLE

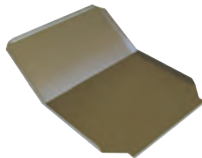
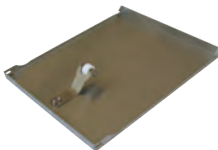
- 8216-W.....2-pack **\$92.95**

- 8217-W.....2-pack **\$92.95**



- 8618 (0011528) Top Heat Shield**\$207**

- 8634 (7000578) Toaster Damper Replacement Kit **\$9**



- 8619 (7000322) Conveyor Cover.....**\$189**

- 8620 (0503385) Bun Chute.....**\$42**

- 8623 (7000292) Bun Feeder.....**\$87**



8600 (7000240)
Drive Motor Kit, 230V..... \$139



8629 (0503589)
Motor Bracket..... \$23



8630 (0503590)
Motor Plate..... \$8

SPROCKETS



8637 (7001652)
Motor, 18T, 5/16" Bore.....\$13

8604 (7001331)
Drive Front, 24T, 1/2" Bore.....\$18

8636 (70001329)
Drive Rear, 20T, 1/2" Bore.....\$17



8606 (7001312)
Idler, 14T.....\$22



8607 (7000207)
Conveyor Sprocket..... \$27



8608 (7001330)
Drive Chain (Complete)..... \$32



8615 (7000539 / 7000224)
Universal VCT Bearing Kit...\$159
Now includes #8614 Ball Bearings



8613 (7000199)
Aluminum Spacer, 2-pk.....\$18



8609 (7000644)
Rod, Conveyor Cover..... \$19



8632 (0700479)
Power Cord.....\$64



8614 (7002108)
Ball Bearing, 2-pk.....\$19

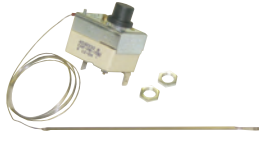


8616 (7001327)
Drive Shaft.....\$25

8617 (2150117)
Idler Shaft.....\$20



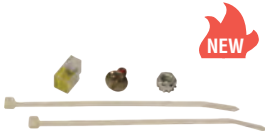
8625 (7000810 / 4050214)
Platen Thermocouple\$44



8626 (7001339)
High Limit Switch.....\$59



8631 (7000739)
Control Board.....\$295



8601 (7001436)
Interlock Bypass Kit.....\$7
NOTE: the On/Off Switch has been discontinued and replaced with this bypass. Instructions Included.



8602 (7000652)
Solid State Relay.....\$74



8612 (7000882)
On/Off Rocker Switch\$15



8621 (7000913)
Exhaust Fan\$175



8622 (7000186)
Tensioner Assembly, 2-pk.....\$77



8627 (2100323)
Adjustment Knob\$15



8628 (210K230)
Leg Kit, 4-pack.....\$16



CONVEYOR CHAIN

8610 (7001311)
Crown (Complete).....\$104

8611 (73001310)
Heel (Complete).....\$104



8624 (7001598)
Slide Rail Kit 2-pk (Long)\$47



8633 (7001600)
Wear Strip (Short), 2-pk.....\$39



TOASTER SHEET
(12-3/4" X 34-1/4")

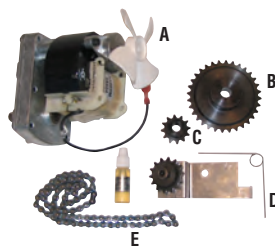
- 8218 Each **\$20**
- 8218-03 3-pack **\$54**
- 8218-10 10-pack **\$160 Best Value!**



CONVEYOR BELT

- 8218-W 1-pack **\$89.95**

A	8800	Drive Motor Only (87-037S)	\$318
B	8801	Motor Drive Sprocket, 32T (537-348S)	\$91
C	8802	Conveyor Sprocket, 12T	\$19
D	8803	Idler Kit (537-735S) (includes Sprocket, Spring and Bracket)	\$117
E	8821	#25 Chain 79 Pitch With Connector Link (537-728S)	\$10



8804 (537-378S)
Sheet Retainer Bars **\$77**



8805 (70-050)
Bun Adjustment Knob **\$15**



8816 (537-330S)
Conveyor Assembly **\$359**

Conveyor Assembly component parts also sold separately:



A	8814	Upper Roller (537-411S)	\$209
B	8813	Shaft for Upper Roller (537-315)	\$39
C	8813-1	Cotter Pins for Upper Shaft, 2-pk (86-272S)	\$9
D	8815	Upper Bearing Kit, 2-pk (537-317S)	\$109
E	8810	Lower Roller (537-412S)	\$212
F	8809	Lower Shaft, Short (537-318S)	\$49
G	8808	Lower Shaft, Long (537-316S)	\$49
H	8807	Gear Pin Kit, 5-pk (537-279S)	\$31
I	8811	Lower Bearing Kit, 2-pk (537-370S)	\$99

Prince Castle TX Series parts continued on p.18

PRINCE CASTLE TX SERIES (CON'T)

**8817 (65-058)**Relay Switch \$66
Thermal Compound Included**8818 (537-400S)**Temperature Probe \$358
Thermal Compound Included**8820 (526-391S)**

Hi Limit Control \$124

PRINCE CASTLE 197/297 SERIES



TOASTER SHEET (16-1/2" X 20")

8219 Each	\$11	
8219-06 6-pack	\$53	20% Savings
8219-12 12-pack	\$92	30% Savings
8219-Roll 108 ft. continuous roll	\$440	40% Savings

**8500 (87-29S)**

Motor \$219

We carry other parts for the
197/297 SeriesVisit www.dmparts.com or
call **1-800-238-5384** for availability

MARSHALL AIR HST13



TOASTER SHEET (14" X 30")

8207 Each	\$10
8207-Roll 108 ft. continuous roll	\$280



CONVEYOR BELT

8207-F Front	\$199
8207-B Back	\$199



BRONZE TOASTER SHEET
(14-3/4" X 27-1/2", 3 MIL)

- 8214Each **\$9.50**
- 8214-06 6-pack **\$45**
- 8214-12 12-pack **\$79**
- 8214-ROLL108ft. Roll **\$290**

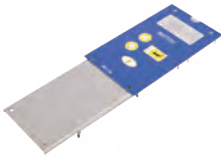


TAN TOASTER SHEET
(14-3/4" X 27-1/2", 5 MIL)

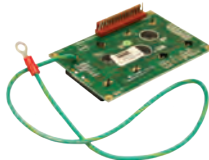
- 6822Each **\$12**
- 6822-06 6-pack **\$58**
- 6822-12 12-pack **\$99**



6800 (526-025S)
Motor Kit..... **\$499**



6801 (526-073S)
Membrane Switch w/ Overlay ...**\$158**



6802 (526-021S)
Display Board..... **\$65**



6803 (525-106S)
Main Board **\$297**



6804 (85-144-24S)
Power Supply Board **\$467**



6806 (65-058S)
Solid State Relay, 50 Amp..**\$65.50**



6807 (65-064S)
Power Relay **\$64**



6805 (78-233S)
Rocker Switch..... **\$30**



6808 (526-022S)
Probe **\$126**



8820 (526-391S)
Hi Limit Control **\$124**



6815 (526-289S)
Drive Train Assembly.....\$299



6812 (526-101S)
Tensioner Assembly.....\$92



6813 (86-558S)
Tensioner Spring\$21



8821 (537-728S)
#25 Chain.....\$10



6809 (526-392S)
Idle Sprocket, Each.....\$43



6814 (526-081)
Motor/Drive Sprocket, Each...\$45



8807 (537-279S)
Gear Pin Kit, 5-pk\$31



6811 (526-710S)
Gear Kit, 2-pk.....\$124



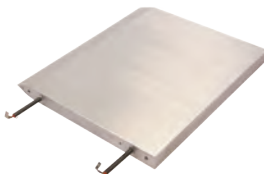
6818 (526-032S)
Handle, Each\$18



6817 (526-221S)
Knob Kit, 2-pk.....\$48



6816 (526-023S)
Fan Kit, 2-pk\$147



6819 (526-627S)
Platen.....\$849



6821 (526-184S)
Major Side Overlay.....\$20

6820 (526-185S)
Minor Side Overlay\$20

EGG COOKER PARTS

Antunes Round-Up ES-1200



8663 (7000833)
Control Board.....\$219



8664 (1001425)
Label for Control Board\$19



8670 (7000391)
A/C Isolator Board\$59



8667 (0700552)
Power Cord.....\$54



8612 (7000882)
On-Off Rocker Switch\$15



8660 (7001338)
Timer Pushbutton Switch\$39



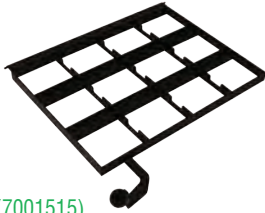
8661 (210K122)
Leg Kit, 4-pk\$45



8662 (210K108)
Tip, Rubber Feet, 4-pk\$12

EGG COOKER PARTS

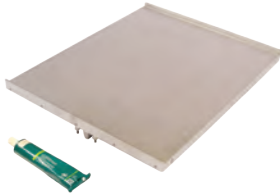
Antunes Round-Up ES-1200



8672 (7001515)
Egg Rack, 12 Portion.....\$359



8675 (7001514)
Cover.....\$329



8673 (7000674)
Platen.....\$699



8674 (2180259)
Scrap Pan.....\$68



8625 (7000810 / 4050214)
Platen Thermocouple.....\$44



8665 (7001145 / 4010187)
Transformer, 240V.....\$37



8666 (040K251)
Strain Relief Kit.....\$17



8668 (7000272)
Hi Limit Thermostat.....\$147



8669 (7000370)
Solid State Relay.....\$82



8671 (7000136)
Terminal Block.....\$19

OVEN MITTS



8335
Tucker QuickClean™ Oven Mitt,
15" Length, 450°F.....\$27 ea



8344
Tucker Puppet Mitt, Nomex® with
VaporGuard™ and Kevlar Palm
15" Length, 900°F.....\$42 ea



8354
Oven Mitt, 17" Length..... \$8 ea

BROILER MITTS



8353
Tucker Three-Finger QuickClean™
Gloves, Poly Cotton with Kevlar
Hand, 18" Length, 650°F... \$89/pr.



8355
Broiler Mitts, Neoprene Coated,
Heavy Duty Insulated,
17" Length, 350°F..... \$34/pr.

FRYER GLOVES



Tucker QuickClean™ Fryer Gloves
20" Length, 300°F.....\$31/pr.

- 8330-M** Size Medium
- 8330-L** Size Large
- 8330-XL** Size X-Large



8356
Fryer Gloves, Neoprene Coated,
Heavy Duty Insulated,
17" Length, 350°F.....\$34/pr.



8356-31
Fryer Gloves, Neoprene Coated,
Heavy Duty Insulated,
21" Length, 350°F.....\$49/pr.

CUT RESISTANT GLOVES



SAFETY TIP

Remember to inspect your safety apparel on a regular basis and replace as needed to keep your employees safe!



Tucker Red Glove.....**\$21 ea**

8405-S Small
8405-M Medium
8405-L Large

White/Blue Glove.....**\$18 ea**

8404-S Small
8404-M Medium
8404-L Large

UTILITY WORK GLOVES



Tucker Cut-Resistant
 Freezer Gloves.....**\$13/pr**

8406-M Medium
8406-L Large
8406-XL X-Large

- Synthetic knit shell creates high level of flexibility & dexterity
- Palm coating withstands exposure from liquids
- Brush fleece lining provides thermal properties



Tucker Cut-Resistant
 Stocking Gloves.....**\$15/pr**

8407-M Medium
8407-L Large
8407-XL X-Large

- Provides a good balance of comfort, dexterity & cut resistance
- Palm coating provides excellent grip & tactility



10100
3-Ply Non-Medical Use Face Masks, Box of 50. **\$36/box**



- Fast Reading (Approx. 1 second)
- Runs on 2 AAA Batteries (included)
- Memory for last 25 readings

8413
Infrared Forehead Thermometer **\$59**



8333
Tucker QuickClean™ Apron,
36"..... **\$39**



8361 Apron,
Heavy Duty PVC,
35" x 45"..... **\$19**



8362 Face Shield (w/visor), w/
Deluxe Adjustment..... **\$28**

8362-1 Replacement
Visor Only, 8" x 15-1/2"..... **\$10**



8364
Tucker QuickClean™
ShinGuards™..... **\$55**



10" Hi-Top Boots
8363 Size Large **\$49**
8363-XL Size X-Large..... **\$49**



8403
Wall Mount for Vinyl PVC
Gloves..... **\$15**
(Hardware included)



10000-B
Looped Mop Head, Blue\$8



10000-R
Looped Mop Head, Red\$8

10003
Mop Handle,
54"\$8



10004
Wringer, Green / Red\$51



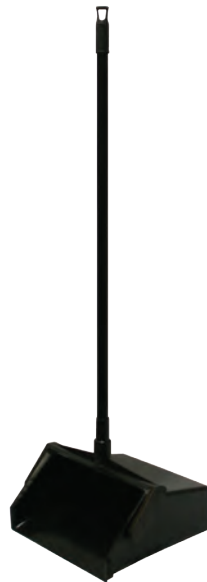
10005
Wringer, Blue / Yellow.....\$51



10006-B
Mop Bucket, Blue, 26 Qt..... \$49



10006-R
Mop Bucket, Red, 26 Qt.....\$49



10015
Lobby Dust Pan w/ Handle\$10



10010-B
Angled Broom Head, Blue.....\$8



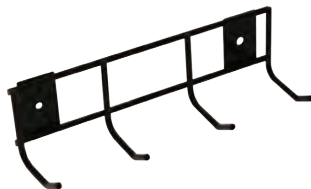
10010-G
Angled Broom Head, Green\$8



10010-R
Angled Broom Head, Red\$8



10011
Broom Handle, 48"\$8



10025
Tool Holder\$10



10020
Restroom Caddy, Yellow\$8

HAND BRUSHES



10018-B
Blue.....\$3



10018-R
Red\$3



10018-W
White\$3



10018-Y
Yellow\$3



10021
Toilet Brush, Yellow\$5

CEILING TILE PROTECTOR



Keeping your ceiling tiles clean has never been easier!

- The Ceiling Tile Protector shown here is black for illustration purposes only. It is clear and nearly invisible.
- Fast and easy installation.
- Reduces ceiling maintenance costs.
- National Sanitation Foundation (NSF) tested.
- Fits all standard diffusers (24" x 24")

8577..... each **\$35**
8577-05 5-pack **\$149**

HAND SANITIZER STANDS

- Allows you to place free standing hand stations wherever you want!
- 48" Total Height
- Shelf can hold various hand sanitizer dispenser or bottle sizes (Hand sanitizer not included)
- Base of Each Shelf Measures 4" x 6"



10105
 Single Shelf..... **\$129**



10106
 Double Shelf **\$159**



Illustration of hand sanitizer dispenser mounted onto the stand. Hand sanitizer not included.



10507
Viper® Pro Multi-Purpose Safety
Cutter, Hi-Vis Yellow..... **6-pk \$19**



10508
Viper® Pro Bag Opener,
Safety Orange **6-pk \$16**



10509
X-tra Safe® Disposable Utility
Knife, Yellow **6-pk \$25**



8574
Pouchmate Pouch Opener **\$4**



8575
Bucket Opener, Plastic **\$13**



8576
Safety Box Cutter **\$4**



8455
Red Sani-Pail, 6 Qt. **\$5.50**



8456
Blue Sani-Pail, 6 Qt. **\$5.50**



4900 Silver King
Door Gasket, 27" x 28" **\$105**
(SKTTR7F Fridge/
SKUCF7F Freezer)



8562 No Slip Magnetic
Doorstop **\$8**



8564 Table Wobble
Stopper **6-pk \$5**

SCOTCH-BRITE™ FRYER & KITCHEN CLEANING TOOL

8373

Starter Set (Includes 1 Tool, Each of 3 Interchangeable Cleaning Pads.....\$55

3 Powerful Positions

Acute Position
POWER SCRUBBINGExtended Position
LONGER REACHRight Position
HARD SPOTS

INTERCHANGEABLE CLEANING PADS FOR #8373 TOOL

Can be used wet or dry at temperatures up to 350°F



8373-1

Gray Heavy Duty Pads..6-pk \$14



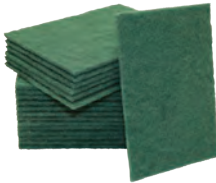
8373-2

Green Medium Duty Pads..6-pk \$14



8373-3

Blue Low Scratch Pads..6-pk \$14



9013

Scouring Pad, Green, Medium Duty,
6" x 9"Box of 20 \$19

Thousands of loyal customers agree:
DMI's convenient **AUTOSHIP PROGRAM** can't be beat!

- 1 Choose any quantity & combination of items found in our catalog. The most popular Autoship items are:

**Toaster Sheets & Conveyor Belts, Safety Apparel,
Gycor Filter Pads, Taylor Blades, Brush Kits & Tune-Up Kits**

- 2 Choose frequency of Autoship:
Monthly, Bi-Monthly, Quarterly, or Semi-Annually



4606-LH
Complete Blower Module, Left Hand
For 36" Station.....**\$629**



4606-RH
Complete Blower Module, Right Hand
For 36" Station.....**\$629**



4610
On/Off Switch.....**\$72**



4611
Relay.....**\$43**



4614
Hi Limit Thermostat.....**\$39**

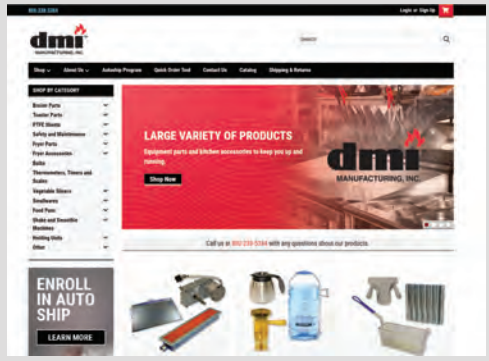


4612
Divider for 32" / 34" / 36" Stations.....**\$79**



4613
Filter Assembly for 36" Station.....**\$299**

Visit us online at
the NEW & improved
www.dmiparts.com
and see how simple it
is to search for parts
and place orders 24/7



DMI is proud to offer Frymaster replacement parts!

FOR FRYMASTER MJ45 AND H50 UNITS



6000 (806-4206)
Temperature Probe
Assembly **\$218**



6001 (210-0681)
Probe Guard..... **\$22**



6002 (826-1177)
Hi-Limit Thermostat..... **\$189**



6003 (807-6084)
Heat Relay, 12V **\$39**



6004 (806-3660)
Sound Device High Output... **\$48**



6005 (807-2103)
Drain Valve Switch..... **\$18**



6006 (807-4978)
Dual Voltage Transformer **\$110**



6007 (826-3191)
Filter Pump/Gasket Kit **\$509**



6008 (826-1712)
Filter Pump Motor..... **\$699**

FOR FRYMASTER H50 UNITS ONLY



6100 (826-0981)
Igniter with Gasket, Nat.....\$148



6101 (826-1072)
Universal Burner, Nat/LP...\$520



6112 (826-0931)
Burner Insulation Kit
for #6101.....\$146



6105 (826-2024)
Ignition Cable.....\$47



6114 (826-3668)
Full Vat Fenwall Ignition
Module Conversion Kit.....\$399



6116 (826-3669)
Duel Vat Fenwall Ignition
Module Conversion Kit.....\$499



GAS VALVES

6106 (826-1122)
Honeywell, Nat.....\$205

6107 (826-1120)
Conversion Kit,
RS to Honeywell, Nat.....\$273



6108 (106-2994SP)
Blower Assembly\$363



6109 (826-2264)
Interface Board\$306



6110 (810-0403)
Burner Orifice, Nat, O-4000 ft. . \$29



6111 (807-3843)
Fuse, 3 Amp, 250V \$10

FRYER PARTS

FOR FRYMASTER MJ45 UNITS ONLY



6050 (806-0184)
Operating Thermostat\$399



6051 (810-1873)
Thermopile with Push-on
Terminal.....\$93



6052 (810-0617)
Thermopile with
Coaxial End\$139



6054 (807-3294)
Gas Valve, Honeywell,
Nat, 24V\$318



6055 (807-1603)
Gas Valve, Honeywell, Nat,
Millivolt\$318



6053 (810-0426)
Pilot, Nat.....\$88



6056 (826-1596)
Gas Valve Conversion Kit,
RS to Honeywell, Nat.....\$429



6057 (806-3548/826-2574)
Interface Board\$429

*Don't see the Frymaster parts you need?
Call us at 1-800-238-5384 for pricing & availability of other items.*



FRY BASKETS

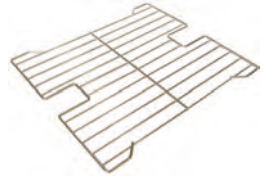
FRY BASKETS W/ LID & DIVIDERS

8369 Green Handle
12"L x 6"W x 5-3/8"H ..\$29

8387 Blue Handle
13"L x 5-1/2"W x 5-1/2"H..\$27

8389 Yellow Handle, 5 slot
12-1/2"L x 6-3/8"W x 3-1/2"H. \$27

8369-4 Blue Handle, 10 slot
12-1/2"L x 6-1/8"W x 4"H..\$26



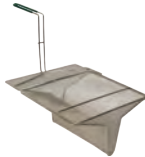
8369-3 Fry Basket Submerger
(for use with #8369).....\$21

8369-1 Fry Basket Insert
(for use with #8369 or #8387) \$38

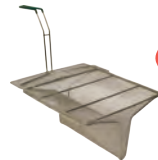
8388 Fry Basket Support Rack
(fits Frymaster MJ45 & H50) \$95

SEDIMENT TRAYS

- Fits beneath your fry baskets to catch crumbs and sediment.
- Can be removed quickly and easily for cleaning.
- Helps to lengthen the life of your oil.



8370
14"L x 12.5"W X 6.5"H **\$85**
Fits Most Frymaster Gas Fryers



8372
13.25"L x 11.75"W X 6.5"H **\$99**
Fits Most OCF/GL Gas Fryers



5201
Pitco Basket Support Rack, Twin
13-1/2"L x 6"W.....\$135

5202
Pitco Basket Support Rack, Full
13-1/2"L x 13-1/2"W\$135

5203
Pitco Basket Support Rack
13-1/2"L x 17-1/2"W\$135

SHORTENING SHUTTLE®



Shortening Shuttle® **\$739**

- **STOPS HOT OIL BUCKET BURNS!**
- **SAVES 30-50%** on labor costs and lowers your liability exposure

DMI Part #	8368	8368-S
Model #	SS-611-T	SS-611-TL
Capacity	80 Lbs. / 10.5 Gal.	60 Lbs. / 9 Gal.
Min. Fryer Drain Hgt.	11.5 in.	9.9 in.
Max. Waste Cont. Hgt.	49.5 in.	49.5 in.
Overall Dimensions	12"W x 12"H x 58"L	12"W x 10"H x



8368-1 Wall Hook.....**\$16**



8368-2 Top Handle**\$31**

8368-3 Wheel Handle**\$49**



8368-4 Single Wheel**\$47**

Manufactured by Worcester Industrial Products, Worcester, MA.



8247-1 Super Swivel,
1" NPT**\$145**



GAS HOSE, 1" NPT
8244 36" Length.....**\$175**
8244-48 48" Length.....**\$199**



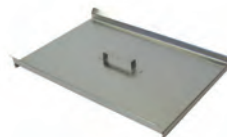
8246-1 Quick Disconnect,
1" NPT**\$79**



8369-2 Universal
Fry Basket Hanger.....**\$119**



8378 Fryer Drain
Extension Pipe **\$65**



8378-1 Vat Cover,
Frymaster Gas..... **\$79**

FRY BAGGING SCOOPS



8371
Plastic, Dual Handle..... \$19



8371-1
Plastic, Right Hand \$19

8371-2
Plastic, Left Hand..... \$19



8371-DH
Metal, Dual Handle..... \$19



8371-RH
Metal, Right Hand..... \$19

8371-LH
Metal, Left Hand..... \$19



5634 Grate Comb for
Forced Air Fry Station \$10



8371-OR
Onion Ring Scoop \$30



8379
Fry Waste Bucket..... \$15

ACCUSALT SHAKER



8440 AccuSalt Shaker with
6.5 g Gray Insert Cover..... \$59



8440-3
Insert Container \$12



8439 AccuSalt Shaker with
3.7 g Black Insert Cover \$59



8440-1
Amber End Cap..... \$12



8440-4
Body Only \$34



8439-1
Black End Cap..... \$16

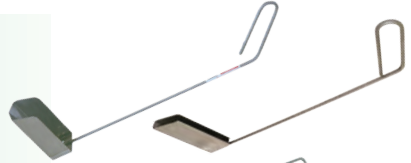


8440-2
Gray Insert Cover, 6.5 g... \$12

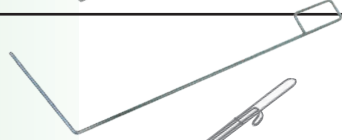


8439-2
Black Insert Cover, 3.7 g \$11

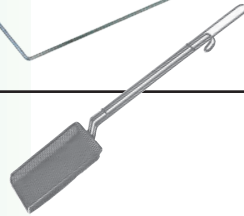
Fryer Cleaning Scoop

8374 Frymaster (23" length) \$55**5204 Pitco (19" length)..... \$42**

Fryer Cleaning J-Rod

8374-1 Frymaster (29" length)\$15**5200 Pitco (21" length).....\$64****8374-2**Fryer Skimmer, Rectangular **\$19**

(20" length, 4" width)

**8374-2A**Fryer Skimmer, Square**\$14**

(19-1/2" length, 6-1/2" width)

**8374-3**Fryer Brush, Right Angle.....**\$12**

(21" length)

**8374-4**Fryer Brush, Straight.....**\$12**

(23" length)

**8430**Ice/Shortening Scoop, 58 oz.....**\$25**

(14-1/2" length)

**8432**Shortening Ladle, 32 oz.....**\$25**

(19" length)





8367
Shortening Saver **\$165**
• Fits on top of standard 5 gal. pail
• Keeps crumbs out of fryers/multipots



8376
Shortening Test Kit **\$16**
8376-D
Dropper Only **\$6**



8377
3M Oil Quality Test Strips,
40/Bottle **\$27**



5549
Vito® 50/80 Filters,
Box of 100 **\$219**



5535
Plain Paper Filters, 16.5" x 25"
Case of 100 **\$55**



5550
Plain Paper Envelopes w/ Center
Hole through one side, 19" x 20.5"
Case of 100 **\$132**

SCOTCH-BRITE™ FRYER & KITCHEN CLEANING TOOL

8373
Starter Set (Includes 1 Tool, Each of 3 Interchangeable Cleaning Pads **\$55**
3 Powerful Positions



Acute Position
POWER SCRUBBING



Extended Position
LONGER REACH



Right Position
HARD SPOTS

INTERCHANGEABLE CLEANING PADS FOR #8373 TOOL

Can be used wet or dry at temperatures up to 350°F



8373-1
Gray Heavy Duty Pads..6-pk **\$14**



8373-2
Green Medium Duty Pads..6-pk **\$14**



8373-3
Blue Low Scratch Pads..6-pk **\$14**

- **LENGTHENS OIL LIFE** - Clarifies, brightens & freshens shortening more effectively than competitive products.
- **IMPROVES FOOD QUALITY** - Less oil absorbed into food.
- **SPECIAL INGREDIENT** - FRI-MOR™ filter powder (in the pad) chemically alters the oil to remove impurities.
- **CONVENIENT** - Compact 30-day packaging. Easy to store and easy to monitor frequency of shortening filtration.
- **SAVES MONEY** - Less add-back in fryers reduces excessive top-off with the more expensive oil.



5521
Optional Clip for
Envelopes.....**\$2ea.**

**See page 39 for
Vito® and Plain
Paper Filters.**

ENVELOPES

DMI# (Gycor #)	Dimensions	Description	Price per Case of 30
5506 (ESA-149)	16" x 16" 1.125" Center Hole (through one side)	Filter Screen Adapter	\$63
5509 (ESA-126)	13.75" x 20.375" 1.50" Center Hole (through one side)	Filter Screen Adapter	\$66
5516 (ESA-154)	11" x 19" 0.75" Side Hole (through both sides)	Filter Screen Adapter	\$59
5520 (ESA-103)	16.75" x 22.5" 0.6875" Side Hole (through one side)	Filter Screen Adapter	\$89
5525 (ESA-161)	17.5" x 21" 1.50" Side Hole (through one side)	Filter Screen Adapter	\$82
5511 (ESA-124)	13" x 13" No Hole	F.A.S.T. Portable (No retrofit)	\$55
5515 (CH-1630)	14" x 15" 0.875" Center Hole (through both sides)	F.A.S.T. Portable (retrofit w/center stand pipe)	\$49
5507 (ESA-153)	11" x 20" 0.75" Center Hole (through both sides)	Low Boy (J50S) Portable	\$61
5522 (ESA-169)	11" x 20" 1.5" Center Hole (through one side)	Low Boy (J50SA), Frontline Portable	\$61
5508 (ESA-129)	19" x 20.5" 1.375" Center Hole (through one side)	Pitco Built-In	\$86
5527 (ESA-105)	14.25" x 22.5" 1.5" Off-Center Hole (through one side)	Henny Penny Built-In	\$71
5528 (ESA-156)	23" x 32" 1.5" Side Hole (through one side)	UltraFryer	\$117



AUTOSHIP PROGRAM

All Gycor products can be set up for DMI's convenient Autoship Program. Call **1-800-238-5384** today. Never worry about forgetting to order again!



SHEETS

DMI# (Gycor#)	Dimensions	Description	Price Per Case of 30
5500 (SSA-140)	14.5" x 21.75"	Frymaster FP3 & Pro Series Built-In	\$41
5501 (SSA-109)	12.5" x 21.5"	Frymaster FP1, FP2, FM2 Built-In	\$39
5503 (SSA-108)	12.5" x 18"	Frymaster FM1 Built-In	\$37
5517 (SSA-115)	14.1875" x 29.1875"	Frymaster Built-In	\$44
5524 (SSA-1504)	11.25" x 19.125" Thicker Grade *	Frymaster OCF Pitco ROV / SSSLV	\$43
5505 (SSA-117)	16.375" x 24.375"	Dean / Frymaster Built-In	\$51
5510 (SSA-116)	16.375" x 18.375"	Dean / Frymaster Portable	\$41
5526 (ESA-1164)	16.375" x 18.375" Thicker Grade *	Dean / Frymaster Portable	\$55
5504 (SSA-125)	9.625" x 15"	Filtercorp Adapter F-16	\$41
5504-1 (G-100)		Gasket for use with F-16 Pads	ea. \$24
5523 (SSA-170)	12.5" x 15"	Filtercorp Adapter F-40	\$46
5523-1 (G-200)		Gasket for use with F-40 Pads	ea. \$30
5502 (SSA-150)	11.25" x 19.125"	Pitco SGH50 & AG14S Built-In	\$36
5512 (SSA-113)	13.5" x 24"	Pitco Portable P14	\$39
5519 (SSA-135)	17.5" x 28"	Pitco / Dar Pro Portable P18, P24, P34	\$54
5518 (SSA-168)	18" x 25"	RTI System	\$48

* Thicker Grade Pads are made from a heavier material for a faster flow rate.

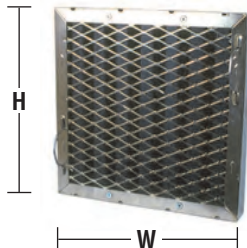
CIRCLES

5513 (CSA-134)	21.875" Diam. No Hole	Renu Portable	\$59
5514 (CSA-120)	21.875" Diam. 1.625" Center Hole	Prince Castle Portable	\$59



DELUX Teflon Coated Type I Hood Filters

- 94% Efficient at Grease Extraction
- Spark Arrestor Frame
- Bale Handles Included

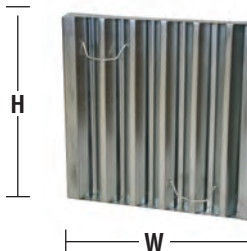


Part #	Trade Size H x W	Actual Dimensions H x W x D	Price
8380-T	10 x 16	9-1/2 x 15-1/2 x 1-7/8	\$169
8381-T	10 x 20	9-1/2 x 19-1/2 x 1-7/8	\$169
8382-T	16 x 16	15-1/2 x 15-1/2 x 1-7/8	\$181
8383-T	16 x 20	15-1/2 x 19-1/2 x 1-7/8	\$185
8385-T	20 X 16	19-1/2 x 15-1/2 x 1-7/8	\$185
8384-T	20 x 20	19-1/2 x 19-1/2 x 1-7/8	\$189



ECONO Steel Hood Filters

- Unique "Frameless" Design Maximizes Capture Area
- Lightweight
- Bale Handles Included



Part #	Trade Size H x W	Actual Dimensions H x W x D	Price
8380-S	10 x 16	9-1/2 x 15-1/2 x 1-5/8	\$59
8381-S	10 x 20	9-1/2 x 19-1/2 x 1-5/8	\$59
8382-S	16 x 16	15-1/2 x 15-1/2 x 1-5/8	\$65
8383-S	16 x 20	15-1/2 x 19-1/2 x 1-5/8	\$71
8385-S	20 X 16	19-1/2 x 15-1/2 x 1-5/8	\$71
8384-S	20 x 20	19-1/2 x 19-1/2 x 1-5/8	\$75

ORDERING TIPS

- Please order with the **Height (H)** dimension first and the **Width (W)** dimension second
- Filters should always be installed with the baffles running in the Vertical (top to bottom) position

SAFETY COATED – TEARDROP SHAPE

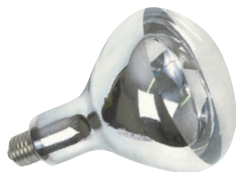


60 WATT COATED, 120V

8365..... \$6.50

8365-06..... **\$34 6-pack**

INFRA-RED HEAT LAMP – CLEAR



375 WATT, 120V

8366..... \$12.50

8366-06..... **\$66 6-pack**

375 WATT COATED, 120V

8366C..... \$24

8366C-06..... **\$129 6-pack**

125 WATT, 120V

8395..... \$8

8395-06..... **\$43 6-pack**

125 WATT COATED, 120V

8395C..... \$19

8395C-06..... **\$103 6-pack**

250 WATT, 120V

8396..... \$8

8396-06..... **\$43 6-pack**

250 WATT COATED, 120V

8396C..... \$24

8396C-06..... **\$130 6-pack**

**SAVE 10% WHEN YOU PURCHASE
BULBS IN A 6-PACK!**

SAFETY COATED – TRADITIONAL SHAPE



40 WATT COATED, 130V

8398..... \$6

8398-06..... **\$32 6-pack**

60 WATT COATED, 130V

8399..... \$6

8399-06..... **\$32 6-pack**

40 WATT COATED, 250V

8391..... \$9

8391-06..... **\$49 6-pack**



There are several
convenient ways to
place your order with DMI



Call Toll Free 1-800-238-5384
weekdays 8:15 am to 5:00 pm

Or order anytime:

Online: www.dmiparts.com

Email: orders@dmiparts.com

Toll Free Fax: 866-302-9397

VEGETABLE SLICERS

PRINCE CASTLE SABER KING



8530 Saber King Chassis **\$769**

- Save time and labor
- Slice 4 tomatoes at once
- Easy to use and clean
- Blade covers improve safety
- Interchangeable blade cartridges adds flexibility



8536
Cross Bar Assembly..... **\$53**



8537
Hand Assembly **\$136**



8538
Cartridge Lock **\$21**



8539
Replacement Leg . **\$36**



8540
Rubber Feet . 4-pk **\$37**

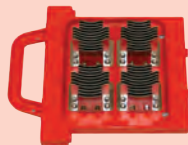


8541
Linkage Pin Pack . **\$31**

TOMATO



8531-1
Blade Cartridge, 1/4" **\$359**

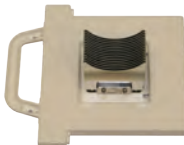


8531-2
Pusher Cartridge, 1/4" **\$249**

ONION



8532-1
Blade Cartridge, 3/16" **\$299**

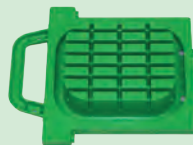


8532-2
Pusher Cartridge, 3/16" **\$199**

LETTUCE



8533-1
Blade Cartridge, 1" x 2" **\$289**



8533-2
Pusher Cartridge, 1" x 2" **\$119**

PRINCE CASTLE SABER KING MINI



8525 Saber King Mini Chassis **\$645**

- 40% narrower and lighter weight than the Saber King
- Interchangeable blade cartridges adds flexibility
- Blade covers improve safety
- Save time and labor
- Easy to use and clean

TOMATO



8526-1
Blade Cartridge, 1/4" **\$269**



8526-2
Pusher Cartridge, 1/4" **\$152**

ONION

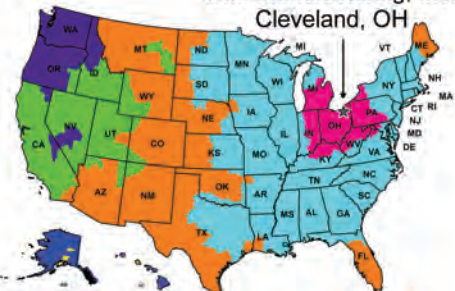


8527-1
Blade Cartridge, 3/16" **\$265**



8527-2
Pusher Cartridge, 3/16" **\$185**

DMI Manufacturing, Inc.
Cleveland, OH



When will your FedEx Ground shipment be scheduled for delivery?

1 Day 2 Days 3 Days 5 Days 6 Days 7+ Days

NORMAL DELIVERY SCHEDULE IN DAYS

(Next Day and 2nd Day Delivery Also Available)



My team is dedicated to getting your orders shipped immediately so that you can keep your restaurants running smoothly.

-Jeremy, Warehouse Manager

VEGETABLE SLICERS

PRINCE CASTLE TOMATO SABER 943 SERIES



8550 Slicer, 1/4" Blades included (9 Blades) **\$479**

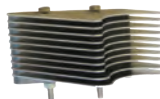
8550-H Slicer, 1/4" Blades included (11 Blades, High Yield) **\$479**

- Perma-Tight blade cartridge system never needs adjustment
- Tomato Catcher reduces clean-up and improves food safety



8550-1 Blade Set, 1/4" (9 Blades) **\$103**

8550-1H Blade Set, 1/4" (11 Blades,
High Yield) **\$107**



8550-4 Pusher Head, 1/4" **\$85**

Works with both the 9 and 11 blade 1/4" sets.



8550-2
Catcher, Red Plastic **\$25**



8550-3
Pusher Handle, Red Plastic **\$34**



8550-6
Guide Rod Bearing **ea \$13**



8550-7
Guide Rod Cushions **4-pk \$26**



8550-5
Replacement Feet **4-pk \$13**

LINCOLN/REDCO TOMATO PRO MODEL 0644N



8553-1 Blade Set, 1/4"
(11 Blades) **\$72**



8553-4 Pusher Head,
1/4" **\$249**

LE-JO TOMATO TAMER MODEL E531



8554-1 Blade Set, 1/4"
(11 Blades) **\$55**



8554-4 Pusher Head,
1/4" **\$99**

NEMCO EASY TOMATO SLICER



- 8556** (N55600-2) Slicer, 1/4" Blades.....**\$389**
- 8556-A** (N55600-1) Slicer, 3/16" Blades.....**\$389**

- Cleanly cut mounds of uniformly sliced tomatoes in seconds
- Razor sharp stainless steel blades
- Unique design provides long life



- 8556-1** Blade Set, 1/4" (10 Blades).....**\$49**
- 8556-1A** Blade Set, 3/16" (13 Blades).....**\$49**



- 8556-4** Pusher Head, 1/4".....**\$149**
- 8556-4A** Pusher Head, 3/16".....**\$149**

NEMCO EASY TOMATO SLICER II™



- 8557** (N56600-2) Slicer, 1/4" Blades.....**\$475**
- 8557-A** (N56600-1) Slicer, 3/16" Blades.....**\$475**

- No need to adjust the blades
- New Pretensioned blade cartridge maximizes safety and blade longevity
- Blades are razor sharp stainless steel for a smooth, precise cut



- 8557-1** Blade Set, 1/4" (11 Blades).....**\$89**
- 8557-1A** Blade Set, 3/16" (14 Blades).....**\$89**



- 8557-4** Pusher Head, 1/4".....**\$159**
- 8557-4A** Pusher Head, 3/16".....**\$179**



- 8902**
Foot Pad.....**\$3.50 ea**

We carry additional replacement parts for Nemco Slicers and Choppers.

Call 1-800-238-5384 for pricing and availability.

NEMCO EASY SLICER VEGETABLE CUTTER



8560 (N55200AN) Slicer, Adjustable Cut\$549

- Compact, portable, and easy to use
- Set the desired thickness by turning a thumb screw (calibrated in 1/16" increments to a maximum of 1/2")
- Mounting base (sold separately) attaches easily to countertops or other flat surfaces



8560-1
Blade Set, Adjustable Cut..... **\$75**



8563
Shaft Lock Assembly **\$28**



8561
Guard **\$75**



8565
Portable Base..... **\$229**

SLICER BLADE CLEANING BRUSHES



8549
3" Bristles **\$29**



8905
2" Bristles..... **\$29**



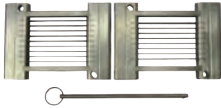
8907
4-1/2" Bristles...**\$8**



8551
Tomato Core-It . **\$3.50**

See page 23 for Cut Resistant Gloves

NEMCO EASY ONION SLICER



8922
Blade Set, 3/16",
(Includes Blade Pin).....\$155



8925
Pusher Head, 3/16".....\$359



8906
Pusher Head Cleaning Tool..\$15



8923
Blade Pin.....\$7



8924
Pusher Plate.....\$5



8924-4
Pusher Head Screw\$3



FRONT & REAR LEGS

8900
Right Front/Left Rear..... \$35

8901
Left Front/Right Rear..... \$35



8902
Replacement Foot Pad
(4 required)\$3.50 ea.



8908
Replacement
Spring.....\$5

Choosing your replacement legs:
To determine if you need left or right
& front or rear, face the slicer as if
you are slicing the onion or lettuce.



8926
Lever/Handle.....\$55



8903
Ring Pin..... \$10



8924-1
Middle Spacer....\$2



8924-2
End Spacer...\$2



8924-3
Red End Spacer.. \$2



8924-5
Hex Nut...\$2



8924-6
Acorn Nut.... \$2.50



- Fast Reading (Approx. 1 second)
- Runs on 2 AAA Batteries (included)
- Memory for last 25 readings

8413
Infrared Forehead Thermometer **\$59**

Check out other **NEW** items from DMI that will help with your COVID-19 operating plan!

Disposable Face Masks
see page 25

Hand Sanitizer Stands
see page 28

ATKINS AQUATUFF™ 351 WRAP AND STOW SERIES DIGITAL THERMOMETER



8415-BP Thermometer with
Bell (Surface) Probe..... **\$259**



8415-NP Thermometer with
Needle Probe **\$259**

- **-100°F to 500°F**
- IPX7 Waterproof rated
- Auto shut-off
- 2 AAA Batteries included
- Wrap & Stow™ Probe can easily be replaced in the field without recalibration



8415-1 Bell (Surface)
Probe Only..... **\$95**



8415-2 Needle
Probe Only **\$95**



8415-3 Battery Cover..... **\$19**



8415-4 Thermocouple
Solid Simulator **\$45**

- The Solid Simulator simulates food product temperature in changing ambient conditions of any refrigerator, freezer or walk-in.
- The temperature of the Solid Simulator will display immediately when plugged into your Atkins 351 Series Digital Thermometer



8410 Pocket Thermometer, 1" Dial..... \$9
0°F to 220°F



8411 Pocket Thermometer, Digital w/Hold \$29
-58°F to 302°F



8409 Cooler Thermometer, Metal..... \$9
-20°F to 80°F
 • Hangs or stands for easy installation
 • HACCP Safe Zones



8409-1 Cooler Thermometer, Plastic \$4
-40°F to 120°F
 • Space saving design
 • HACCP Safe Zones



8416 Electronic Timer / Clock / Stopwatch..... \$29
 • Counts up or down
 • Memory recall
 • Easel stand, wire hanger, clip-on or magnet mount



8419 Microwave
 Wavtage Tester..... \$115



8418 Digital Portion Scale \$51
 • Displays in Ounces, Pounds + Ounces, or Grams (Graduation 0.05 ounce)
 • Automatic Shut-Off
 • 2 AA batteries included
 • 11 Lb. Capacity



8417 Mechanical Portion Scale \$49
 • Contoured stainless steel platform holds bagged items: fries, tacos, shrimp
 • Easy to read dial
 • 16oz. Capacity (Graduation 0.25 ounce)
 • Compact, space-saving design

TONGS



6" Plastic \$2.75

8420-BK Black

8420-R Red

8420-G Green



9" Plastic \$3.75

8422-B Blue

8422-R Red

8422-G Green



12" Plastic \$6

8423-B Blue

8423-R Red



8424

9" Steel Lift N Grip \$11

8425

12" Steel Lift N Grip \$13



9009

9" Steel Scalloped \$11

9012

12" Steel Scalloped \$10



9" Metal with Plastic Coated Handle \$13

9009-BK Black

9009-B Blue

9009-R Red

9009-G Green

9009-Y Yellow

9009-P Purple..... \$14



9050-BK

Refillable Grease Pencils,
Black, Box of 12..... \$14



9051-BK

Pencil Refills, Black,
Box of 72 \$9



8426-BK Black Solid
Spoon, 1/4 oz. **\$3**



8427-G Green Solid
Spoon, 1/2 oz. **\$3**



8427-T Tan Solid
Spoon, 1/2 oz. **\$3**



8428-BR Brown Solid
Spoon, 3/4 oz. .. **\$3.50**



8428-R Red Solid
Spoon, 3/4 oz. .. **\$3.50**



8428-C Clear Solid
Spoon, 3/4 oz. .. **\$3.50**



8429-BR Brown Slotted
Spoon, 3/4 oz. .. **\$3.50**

SOLID SHORT MEASUREMISERS



9008 Red Portion
Cup, 2 oz. **\$7.75**



10520-R Red
Markings, 2 oz. **\$9**



10520-B Blue
Markings, 3 oz. **\$9**



10520-G Green
Markings, 4 oz. **\$9**

SOLID LONG MEASUREMISERS



10522-P Purple
Markings, 1-1/2 oz. **\$9**



10522-R Red
Markings, 2 oz. **\$9**



10522-B Blue
Markings, 3 oz. **\$9**



10522-G Green
Markings, 4 oz. **\$9**



9003
Green Disher, 3-1/4 oz., #12. **\$9**



9004
Yellow Disher, 2 oz., #20. **\$9**



8551
Tomato Core-It . **\$3.50**

SMALLWARES



8471
Lettuce Knife,
Green Plastic.....\$5



8472
Lettuce Knife,
Green Handle\$24



8433-W
10" Scalloped Knife,
White Handle\$14



8433-BK
10" Scalloped Knife,
Black Handle\$14



8470-G
Saf-T-Grip Cutting Board,
12" x 18" Green\$25



8470-W
Saf-T-Grip Cutting Board,
12" x 18" White\$25



8443
Saf-T- Grip Cutting Board,
6" x 9" White\$9



8442
Chicken Cutter/
Scoop.....\$16



9005
Wire Whisk, 12".....\$6



9005-P
Wire whisk, 12", Nylon Handle
w/ Purple.....\$12.50



8434
Spatula/Sandwich Spreader,
Plastic\$2



8441
Amber Spatula\$7



8446
Brown Salad Crock with
Clear Lid, 1.2 qt.\$10



8444
Clear Powdered Sugar
Shaker with Top.....\$6

ACCUSALT SHAKER



8440 AccuSalt Shaker with 6.5 g Gray Insert Cover..... **\$59**



8440-3 Insert Container **\$12**



8439 AccuSalt Shaker with 3.7 g Black Insert Cover **\$59**



8440-1 Amber End Cap..... **\$12**



8440-4 Body Only **\$34**



8439-1 Black End Cap..... **\$16**



8440-2 Gray Insert Cover, 6.5 g.... **\$12**



8439-2 Black Insert Cover, 3.7 g **\$11**

ACCUTASTE™ SEASONING DISPENSER



9022 AccuTaste™ Seasoning Dispenser , .35cc Gray Unit **\$53**

- Patented design provides accurate, repeatable and functional dispensing of a premeasured dose
- Hinged lid allows for easy refill
- Designed for easy cleaning without disassembly



9020-1 Lid Only **\$6**



9020-2 Body Subassembly **\$31**



9022-1 Gray Base Subassembly, .35cc..... **\$21**



9020-3 Pin Only **\$2.50**



9020-4 Spring Only **\$8**



9020-5 Thumbscrew Only **\$2**

SMALLWARES



Kits include 2 each of Red, Yellow, Orange, Green, White and Brown as shown

8484-KIT
Store N' Pour Necks, Assorted Kit..... **12 pack \$44**

8483-KIT
Store N' Pour Lids, Assorted Kit..... **12 pack \$29**



8482
Store N' Pour Bottle,
1 Quart..... **\$4**

**IMPORTANT UPDATE REGARDING
STORE N' POUR NECKS AND LIDS**

Due to a change by the manufacturer, necks and lids will no longer be sold individually. They will only be sold in assorted kits. DMI has limited stock of individual necks and lids as shown on the bottom of this page. Once our stock of these individual necks and lids has been depleted, they will no longer be available individually and will need to be ordered as part of the assorted kits.



Store N' Pour Neck (Limited Stock)..... each **\$4**

8484-G Green

8484-W White

8484-BK Black



Store N' Pour Lid (Limited Stock)..... each **\$3**

8483-R Red

8483-O Orange

8483-G Green

8483-W White

8483-B Brown

8483-BK Black



1/2 GALLON MIX PITCHERS
8480 Iced Coffee\$7.50
8485 Frappe.....\$7



8481
 Pitcher, 1 Gallon,
 with Lid.....\$11



8473
 Syrup Bottle, 32 oz.....\$2



White Pump
 for #8473
 Syrup Bottle

8474-W 1 oz.....\$3.50
8475-W 1/2 oz...\$3.50



8449
 Stainless Steel Shake Cup..\$5



8491
 Shake Mix Cup.....\$14



8492
 Shake Mix Cup Inserts.....\$11



9014
 Coffee Carafe, 1/2 gallon,
 with Black Lid\$45



9014-1
 Black Lid for 1/2 gallon
 Carafe.....\$14



9014-2
 Orange Lid for 1/2 gallon
 Carafe.....\$14



5950
 Funnel Assembly,
 Coffee.....\$89



5951
 Funnel Assembly,
 Tea.....\$21



5952
 Spray Head, White Plastic,
 7 Hole\$3

SQUEEZE BOTTLES



8436 Clear Squeeze Bottle with Clear Cap, 12 oz. **\$1.75**

9007 Clear Squeeze Bottle with Clear Cap, 24 oz. **\$2.00**



8435-C
Clear Cap Only
(small opening)....**\$.75**



8435-B
Blue Cap Only
(large opening) ...**\$.75**



8435-G
Green Cap Only
(large opening) .**\$1.00**



8460-S FIFO Bottle with Green (Small) Valve Cap, 12oz **\$2.50**

8460-L FIFO Bottle with Blue (Large) Valve Cap, 12oz..... **\$2.50**



8464
White End/Label
Cap Only**\$1.00**



8465-S
Green (Small) Valve
Cap Only**\$1.50**



8465-L
Blue (Large)Valve
Cap Only **\$1.50**



8460-R Squeeze Bottle with Red Dispensing and End Caps,12oz **\$2.50**



8464-R
Red End
Cap Only**\$1.00**



8465-R
Red Dispensing
Cap Only**\$1.50**

KETCHUP DISPENSER PARTS



8520 (83910)
Server Ketchup Pump
w/Locking Lid **\$275**



8522 (84031)
7 Quart Insert/Base for #8520
Server Ketchup Pump..... **\$49**

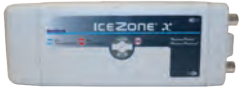


8521 (82533)
Spare Parts Kit for #8520
Server Ketchup Pump.. **\$18**



8523 (82016)
Spring for #8520 Server
Ketchup Pump **\$3**

ICEZONE®-X SANITATION SYSTEM



9030
IceZone X-30 **\$395**
9030-B
Replacement UV Bulb **\$85**

- Keeps ice machines, ice bins, and beverage dispensers clean
- Prevents slime and mold
- Reduces bacteria, yeast and other microorganisms
- Reduces equipment cleanings and associated costs
- The only NSF certified sanitation
- Maintenance free - requires a simple annual UV lamp replacement
- Approved by all major ice machine manufacturers



Sample installation
NOTE: There are several mounting options



8450
Saf-T-Ice® Tote, 6 Gallon **\$63**

Use dedicated ice-only containers and utensils to keep ice protected, sanitary and your customers safe.

SAF-T-SCOOP® & GUARDIAN SYSTEM™



12-16 ounce
For Beverage Station:

8452
Guardian System™
(includes Scoop, Holder & Mounting Tools) **\$63**

8452-1
Replacement Scoop only .. **\$25**



64-86 ounce
For Ice Machines:

8453
Guardian System™
(includes Scoop, Holder & Mounting Tools) **\$99**

8453-1
Replacement Scoop only .. **\$37**



8430
Ice/Shortening Scoop,
Metal, 58 oz.
(14-1/2" length) ... **\$25**



8431
Ice Scoop, Plastic, 12 oz.
(11-1/2" length) **\$7**



8432
Shortening Ladle,
32 oz. (19" length) ... **\$25**

SHAKE, SOFT SERVE & SMOOTHIE



BRUSH KITS



TUNE-UP KITS



BLADES

Model #	DMI #	OEM #	Description	Price
Taylor 490	5010	39465X	4-Piece Brush Kit	\$32
	5021	48398X	Tune Up Kit	\$17
	5032	84950	Plastic Blade, 3 Holes, ea.	\$16

Taylor 632	5010	39465X	4-Piece Brush Kit	\$32
	5025	33351X	Shake Side Tune Up Kit	\$17
	5026	49463-11X	Soft Serve Side Tune Up Kit	\$25
	5032	84950	Shake Side Blade, 3 Holes, ea.	\$16
	5034	35174	Soft Serve Side Blade, ea.	\$10

Taylor C707	5012	44127X	9-Piece Brush Kit	\$58
	5027	4946358X	Tune Up Kit	\$24
	5034	35174	Soft Serve Blade, ea.	\$10

Taylor C709	5012	44127X	9-Piece Brush Kit	\$58
	5028	49463-92	Tune Up Kit	\$37
	5034	35174	Soft Serve Blade, ea.	\$10



5000
Lubricant, Non-Heat Treat, 4 oz... **\$5**
(445, 490, 632, C707)



5001
Lubricant, Heat Treat, 4 oz..... **\$8**
(C709)



8250-1A
Carbon Brush for
Motor, 1/4" x 1/4" **\$6ea.**



5036-L
Stud Nut Top, Long **\$23**
(C707, C709)



5036-S
Stud Nut Bottom, Short **\$23**
(C707, C709)



5037
Stud Nut **\$17**
(632)



5900
48 oz. Container with Blade
and Plugless Lid **\$159**



5901
Rubber Lid, Plugless..... **\$42**



5902
Blade Assembly **\$99**



5903
Drive Socket..... **\$14**



5904
On/Off Rocker Switch **\$7**

FOOD PANS



Pan



Flat Lid



Lid w/Handle



Drain Rack

Clear Pans - For Cold Food (-40°F to +210°F)

	Part #	Description	Price
FULL SIZE 20-7/8" x 12-3/4"	8751-2	Pan, 2-1/2" Deep	\$14.00
	8751-6	Pan, 6" Deep	\$23.00
	8751-HL	Pan Lid w/Handle	\$14.00
	8751-NL	Pan Lid w/Handle & Notch	\$15.00
	8751-1	Drain Rack	\$13.00
1/2 SIZE 10-7/16" x 12-3/4"	8752-2	Pan, 2-1/2" Deep	\$8.50
	8752-4	Pan, 4" Deep	\$10.00
	8752-6	Pan, 6" Deep	\$13.00
	8752-FL	Pan Lid - Flat	\$7.50
	8752-HL	Pan Lid w/Handle	\$7.50
	8752-1	Drain Rack	\$6.00
1/3 SIZE 6-15/16" x 12-3/4"	8753-2	Pan, 2-1/2" Deep	\$6.50
	8753-4	Pan, 4" Deep	\$9.00
	8753-6	Pan, 6" Deep	\$9.50
	8753-FL	Pan Lid - Flat	\$5.00
	8753-HL	Pan Lid w/Handle	\$5.00
	8753-1	Drain Rack	\$5.00
1/6 SIZE 6-3/8" x 6-15/16"	8756-2	Pan, 2-1/2" Deep	\$4.50
	8756-4	Pan, 4" Deep	\$5.00
	8756-6	Pan, 6" Deep	\$7.00
	8756-FL	Pan Lid - Flat	\$3.75
	8756-HL	Pan Lid w/Handle	\$4.25
	8756-NL	Pan Lid w/Handle & Notch	\$4.25
	8756-1	Drain Rack	\$2.25
	8756-1	Drain Rack	\$2.25
1/9 SIZE 4-1/4" x 6-15/16"	8759-4	Pan, 4" Deep	\$6.00
	8759-FL	Pan Lid - Flat	\$4.00
	8759-NL	Pan Lid - Flat w/Notch	\$4.00
	8759-1	Drain Rack	\$2.00

Commonly Ordered Clear Food Pans:

8752-2

1/2 Size, 2-1/2" Deep:
Tomatoes

8752-4

1/2 Size, 4" Deep:
Lettuce

8753-4

1/3 Size, 4" Deep:
Pickles / Onions

8756-4

1/6 Size, 4" Deep:
Red Onions / Cheese



Pan



Lid w/Handle



Lid w/Handle & Notch



Drain Rack

Amber Pans - For Hot Food (-40°F to +300°F)

	Part #	Description	Price
FULL SIZE 20-7/8" x 12-3/4"	8741-6	Pan, 6" Deep	\$69.00
	8741-HL	Pan Lid w/Handle	\$49.00
1/2 SIZE 10-7/16" x 12-3/4"	8742-2	Pan, 2-1/2" Deep	\$22.00
	8742-6	Pan 6" Deep	\$38.00
	8742-HL	Pan Lid w/Handle	\$22.00
	8742-1	Drain Rack	\$16.00
1/3 SIZE 6-15/16" x 12-3/4"	8743-2	Pan, 2-1/2" Deep	\$19.00
	8743-4	Pan, 4" Deep	\$24.00
	8743-6	Pan, 6" Deep	\$33.00
	8743-HL	Pan Lid w/Handle	\$15.00
	8743-NL	Pan Lid w/Handle & Notch	\$15.00
	8743-1	Drain Rack	\$9.00
1/4 SIZE 6-3/8" x 10-7/16"	8744-4	Pan, 4" Deep	\$21.00
	8744-6	Pan, 6" Deep	\$26.00
	8744-HL	Pan Lid w/Handle	\$11.00
	8744-1	Drain Rack	\$10.00
1/6 SIZE 6-3/8" x 6-15/16"	8746-2	Pan, 2-1/2" Deep	\$13.50
	8746-4	Pan, 4" Deep	\$16.50
	8746-6	Pan, 6" Deep	\$19.00
	8746-HL	Pan Lid w/Handle	\$10.00
	8746-NL	Pan Lid w/Handle & Notch	\$10.00
	8746-1	Drain Rack	\$5.50
1/9 SIZE 4-1/4" x 6-15/16"	8749-2	Pan, 2-1/2" Deep	\$10.00
	8749-FL	Pan Lid - Flat	\$7.00

FOOD PANS



Pan



Lid w/Handle



Lid w/Handle & Notch



Drain Rack

Stainless Steel Pans

	Part#	Description	Price
1/2 SIZE 10.4" x 12.8"	8762-2	Pan, 2-1/2" Deep	\$15.00
	8762-4	Pan, 4" Deep	\$18.00
	8762-6	Pan, 6" Deep	\$24.00
	8762-HL	Pan Lid w/Handle	\$11.00
	8762-1	Drain Rack	\$22.00
1/3 SIZE 6.9" x 12.8"	8763-4	Pan, 4" Deep	\$16.00
	8763-6	Pan, 6" Deep	\$24.00
	8763-HL	Pan Lid w/Handle	\$10.00
	8763-NL	Pan Lid w/Handle & Notch	\$10.00
			
8704 1/3 Size Wire Mesh Drain Rack	\$4.75		
			
8707 1/3 Size Stainless Steel Drain Rack	\$10.00		
1/6 SIZE 6.4" x 7.0"	8766-4	Pan, 4" Deep	\$13.00
	8766-6	Pan, 6" Deep	\$16.00
	8766-HL	Pan Lid w/Handle	\$9.00
	8766-NL	Pan Lid w/Handle & Notch	\$9.00
	8766-1	Drain Rack	\$15.50
1/9 SIZE 4.3" x 6.9"	8769-4	Pan, 4" Deep	\$12.00
	8769-NL	Pan Lid w/Handle & Notch	\$8.00



8736-4
1/6 Size Pan, 4" Deep, Black **\$15.50**
(6-3/8" x 6-15/16") (-40°F to +375°F)



8737
Coldmaster Whipped Cream
Can Chiller, Black..... **\$55**



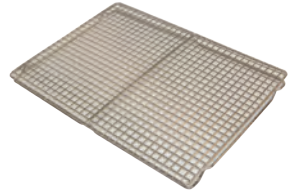
8738
Coldmaster Insulated Food
Pan, Black..... **\$49**



8446
Brown Salad Crock with
Clear Lid, 1.2qt. **\$9**



8495
1/2 Size Aluminum Baking Pan,
12-7/8" X 17-3/4" **\$10**



8496
1/2 Size Wire Pan Insert,
11-7/8" X 16-3/8" **\$26**



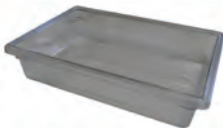
8437
Bacon Microwave Tray,..2-pack **\$23**



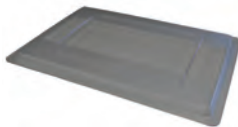
8437-1
Microwave Shelf for
Bacon Trays **\$21**



8438
Stackable Bacon Microwave
Trays **4-pack \$59**



8760
Lettuce Storage Box,
18" X 26" X 6" **\$43**



8760-FL
Lettuce Storage Box Lid,
18" X 26" **\$20**



8760-C
Lettuce Storage Box
Colander, 18" X 26" **\$33**

HOLDING UNITS

FOR PRINCE CASTLE EHB24 & EHB34 UNITS



6500 (540-1002S)
Lid..... \$29



6501 (540-1158S)
Latch Kit..... \$94



6502 (197-232S)
Feet..... 4-pk \$22



6515 (78-184S) On/Off Rocker Switch,
Lighted..... \$23



6505 (540-1215S)
Overlay and Display \$107



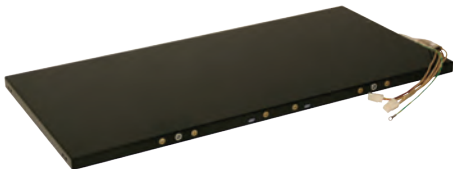
6514 (72-674S)
Power Cord..... \$141



6503-M (510-098S)
Timer Bar, 8 CH, Main (Front)..... \$575



6503-A (510-099S)
Timer Bar, 8 CH, Aux (Rear) \$575



HEATER ASSEMBLIES, 4 WIDE

6512 (540-1222S) Top Shelf, Upper \$455

6513 (540-1224S) Top Shelf, Lower \$455

6510 (540-1226S) Lower Shelf, Upper..... \$455

6511 (540-1072S) Lower Shelf, Base..... \$455

FOR PRINCE CASTLE EHB24 UNITS



6507 (95-1819S)
USB Connector \$30



6508 (95-2011S)
Ethernet Connector \$91



6506 (540-1232S)
Control Board..... \$719



6509 (88-709-2-11S)
Speaker..... \$45



8730
Holding Unit Cleaning Brush.....\$25

FOR DUKE



4400
Duke HS2 Lid.....\$36



8706
Single Handle Pan, Amber.....each \$19.95



8708
Single Handle Pan, Black.....each \$16.95



8700
Dual Handle Pan, Amber.....6-pack \$119



8735
Dual Handle Pan, Black.....4-pack \$66

SPECIAL BULK DISCOUNT OFFER:

Place an order for Six 6-Packs of Amber
Dual Handle Pans (36 pans) and **SAVE 10%!**
(price per 6-pack drops from \$119 to \$107.10)

SPECIAL BULK DISCOUNT OFFER:

Place an order for Six 4-Packs of Black
Dual Handle Pans (24 pans) and **SAVE 5%!**
(price per 4-pack drops from \$66 to \$62.70)

**Keep your ice protected, sanitary
and your customers safe
with Saf-T-Ice® products from DMI**



The **Saf-T-Ice® Tote** is the original dedicated foodservice container that will allow you to transport ice safely.

**See page 59 for these
items and more!**

The **Saf-T-Scoop®** protects ice from dangerous contact with knuckles or thumbs during use, and the **Guardian System™** provides safe storage for the Saf-T-Scoop® when not in use.



1-800-238-5384



www.dmiparts.com

dmi[™]
MANUFACTURING, INC.
7177 Industrial Park Blvd.
Mentor, OH 44060

Presort Std
U.S. Postage
PAID
Mentor, OH
Permit No. 238