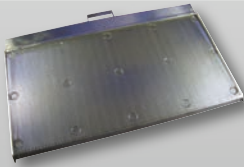




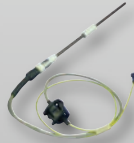
*Winter  
2023  
Catalog*

**MANUFACTURING, INC.**

**Your Reliable Source For Equipment Parts  
& Smallwares Since 1997**



**Broiler Parts**



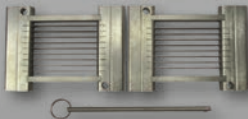
**Toaster Parts**



**Safety & Maintenance**



**Fryer Parts & Accessories**



**Vegetable Slicers**



**Smallwares & More**



**1-800-238-5384**  
**www.dmiparts.com**  
**Fax: 1-866-302-9397**



**JAN 2023**

# Table of Contents & Ordering Information

<b>BROILER PARTS – Duke</b> .....	<b>3-8</b>
<b>BROILER PARTS – JF93 &amp; JF94</b> .....	<b>9</b>
<b>BROILER PARTS – MPB94</b> .....	<b>10-13</b>
<b>TOASTER PARTS</b>	
Antunes Round-Up .....	14-19
Prince Castle .....	20-23
Marshall Air .....	21
<b>EGG COOKER PARTS</b> .....	<b>24-25</b>
<b>SAFETY APPAREL</b> .....	<b>26-28</b>
<b>MAINTENANCE</b> .....	<b>29-32</b>
<b>FRYER ACCESSORIES &amp; PARTS</b>	
Forced Air Fry Station .....	33
Frymaster MJ45 & H50 .....	34-36
Fryer Tools & Accessories .....	37-41
Gycor Filter Pads .....	42-43
Hood Filters .....	44
<b>OTHER</b>	
Bulbs .....	45
Vegetable Slicers .....	46-51
Thermometers, Scales & Timers .....	52-53
Smallwares .....	54-60
Shake & Soft Serve .....	61
Food Pans .....	62-65
Holding Units .....	66-67

## Your Customer Service Team



Mark



Denise



Dennis



Julie



Celina



Alethea



- DMI is open from 8:15 am to 5:00 pm EST Mon-Fri. Your call will always be answered by a live customer service representative during business hours. Phone messages left after-hours will be returned on the next business day.
- Fax Website and Email are available 24 hours/7 days a week.
- There is no minimum order.
- All prices are subject to change. Check [www.dmiparts.com](http://www.dmiparts.com) for the most current pricing.
- For ground shipment transit times, see map on page 47.
- Part numbers listed in green are for reference only.

**Toll Free Phone Orders: 800-238-5384**

**Toll Free Fax Orders: 866-302-9397**

**Local Phone Orders: 440-975-8645**

**Local Fax Orders: 440-975-0688**

**Website Orders: [www.dmiparts.com](http://www.dmiparts.com)**

**Email Orders: [orders@dmiparts.com](mailto:orders@dmiparts.com)**

**From Mexico: 001-800-238-5384**

# BROILER PARTS – DUKE

## Covers, Pans & Panels



**4000 (600222)**  
Flame Arrestor ..... \$519



**J Style Burner Tube**  
**4008 (176370)** Nat or LP Gas.... \$237  
**4010 (175950)** High Altitude.... \$325



**4012 (175200K)**  
Burner Shield ..... \$403



**4002 (176398)**  
Main Grease Pan ..... \$151



**4004 (176397)**  
"V" Grease Pan ..... \$341



**4006 (175351F)**  
Lower J Burner Panel ..... \$188



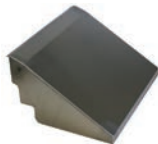
**4016 (175150PS)**  
Pivot Ash Scraper ..... \$259



**4018 (175866PS)**  
Discharge Access Panel..... \$242



**4020 (175340PS)**  
Discharge Chute..... \$394



**4022 (175778WELD)**  
Discharge Hood ..... \$195



**4028 (175358PS)**  
Discharge Pan ..... \$188



**4026 (175357PS)**  
Side Grease Pan..... \$259



**4024 (175353PS)**  
Product Pan Shelf ..... **\$139**



**4029**  
Splash Shield ..... **\$31**



**4030 (175300)**  
Front Panel ..... **\$221**



**4032 (175741PS)**  
Loader Ramp ..... **\$229**



**4036 (175878PS)**  
Loader Mounting Bracket..... **\$485**



**4047 (600407)**  
Air Brake ..... **\$159**



**4034 (175429PS)**  
Door ..... **\$95**



**4038 (175444PS)**  
Loader ..... **\$813**



**4040 (175430PS)**  
Loader Tray ..... **\$395**



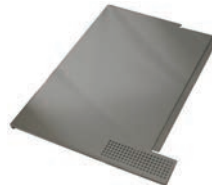
**4046 (175226)**  
Impedance Pan (if no  
optional catalyst) ..... **\$132**



**4042 (175383)**  
Electrical LWB Access Panel ... **\$83**



**4044 (175392)**  
Right Side Upper Lift Off  
Panel ..... **\$57**



**4050 (175305)**  
Rear Access Panel ..... **\$245**

# BROILER PARTS – DUKE

Top, Front & Electrical Components



**4100 (175780)**  
Infrared Upper Burner.....\$359



**4136 (175535)**  
Upper Burner Sensor.....\$77  
*Lower Burner Sensor on p. 8*



**4138 (175380)**  
Ignition Cable Shield.....\$92



**4086 (175536)**  
Igniter.....\$43



**4085 (175095)**  
Upper Igniter Guard.....\$74



**4087 (175032)**  
Lower Igniter Shield.....\$64



**4068 (177830K)**  
Upper Burner Ignition  
Module.....\$318



**4070 (175537)**  
Upper Burner Ignition  
Cable.....\$16



**Lower Burner Ignition Module**  
**4064 (175877)** Nat Gas.....\$255  
**4065 (175872)** LP Gas .....\$299



**4066 (175538)**  
Lower Burner Ignition  
Cable.....\$16



**4072 (175507)**  
Motor Capacitor ...\$28



**4074 (175516)**  
Transformer.....\$43



**4076 (175870)**  
Solid State Relay . \$76



**4088 (175503)**  
Main Power Switch.....\$20



**4062 (600-250SED)**  
Blower, 60Hz 120VAC..... **\$427**



**4060 (175511)**  
Blower Inlet Gasket..... **\$4**



**4146 (175108)**  
Blower Box Cover ..... **\$218**



**4142 (175189)**  
Blower Hose..... **\$21**



**4092 (175873/175575)**  
Control Board..... **\$899**



**4094 (175510)**  
Control Board Gasket..... **\$12**



**4090 (175356)**  
Control Board Mounting Frame.. **\$46**



**4102 (175867)**  
Conveyor Motor ..... **\$171**



**4078 (175517)**  
Sprocket, B21 x 3/8"  
Bore (Motor)..... **\$27**



**4104 (175176)**  
Motor Mounting Bracket ..... **\$20**



**4082 (175525)**  
Conveyor Bushing Block ..... **\$23**



**4084 (175038PS)**  
Right Side Conveyor Shaft ..... **\$95**



**4096 (175550)**  
Cook Light..... **\$10**



**Combo Valve**

4120 (175531) Nat Gas ..... \$159

4122 (175776) LP Gas ..... \$152



4126 (175540)

Base Connector,  
Valve to tube..... \$10



4116 (175541)  
Tee Compression Fitting ... \$15



4115 (175547)  
Compression Sleeve, 3/8" . \$1.50



4117 (175548)  
Compression Nut, 3/8"..... \$2.75



8247  
Super Swivel, 3/4" NPT ..... \$95




**GAS HOSE, 3/4" NPT**  
8245 36" Length.....\$179  
8245-48 48" Length ..... \$199




8246  
Quick Disconnect, 3/4" NPT .... \$65


**Upper Front Orifices**

 4106 (175735)  
#40 Nat Gas ..... \$10

 4108 (175767)  
#52 LP Gas ..... \$18

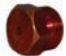
**Lower Burner Orifices**

 4130 (176404)  
#30 Nat Gas ..... \$32

 4132 (176412)  
#46 LP Gas ..... \$19

**Upper Rear Orifices**

 4110 (175736)  
#36 Nat Gas ..... \$18

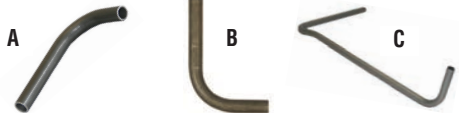
 4112 (175768)  
#51 LP Gas ..... \$18

**Orifice Holders**

 4134 (600290)  
Lower Burner.....\$28

 4118 (175542)  
Upper Burner....\$20

**Tubing Kits**



A	4114 (175476)	Tee to Upper Burner	\$30
4128 (175478)		Lower Burner to Valve	\$26
C	4140 (175477)	Tee to Valve	\$86

## REAR, DISCHARGE SIDE & BROILER STAND COMPONENTS



**4170 (175534)**  
Lower Burner Sensor.....\$74  
*Upper Burner Sensor on p. 5*



**4172 (175977)**  
Temperature Probe,  
C-Chamber.....\$151



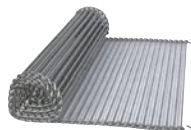
**4194 (175656)**  
Power Cord with Orange  
Plug .....\$38



**4180 (175551)**  
Drive Chain (Complete).....\$20



**4178 (175037PS)**  
Discharge Side Shaft ..\$106



**4182 (175674)**  
Cook Chain (Complete)...\$349



**4190 (175562)**  
Caster with Brake.....\$39



**4192 (175563)**  
Caster without Brake.....\$39



**8291**  
Pliers for Cook Chain.....\$51

## TOOLS



**4184 (175485)**  
Tube Burner Cleaning Tool .....\$63



**4186 (175701)**  
Flame Rod Tube Cleaner.....\$45



**4189 (175696)**  
Loader Tool / Socket Wrench .....\$83



**4188 (175705)**  
Brush for Flame Rod Tube Cleaner.....\$3



**BROILER SHEET, TAN JF93** (9-3/4" x 22-5/8")



- 8200**.....Each **\$9**
- 8200-06**.....6-pack **\$43**
- JF94** (9-3/4" x 28")
- 8201**.....Each **\$10**
- 8201-06**.....6-pack **\$48**
- FH94** (19-3/8" x 28")
- 8202**.....Each **\$17**
- 8202-06**.....6-pack **\$81**



**3000 (18447)**  
High Pressure Blower ..... **\$835**



**3723 (25957 /17185)**  
Flame Sensor, Slotted .....**\$73**



**3068 (18861)**  
Thermocouple Probe, 48" .....**\$62**



**3040 (20786)** Gear Motor,  
DC, Brushless .....**\$819**

**3041 (178996)** Sprocket,10T,  
Motor, 3/8" Bore.....**\$35**



**3072 (13579)**  
Motor Reversing Switch ..... **\$26**



**3718 (16921)**  
Ignition Module..... **\$347**



**3720 (10291)**  
Igniter ..... **\$109**



**3744 (15480)**  
Main On/Off Switch ..... **\$195**



**3734 (6049)** Bearing,  
1" W x 1-7/8" H, 5/8" Shaft,  
Feed End ..... **\$43**



**3730 (6046)** Bearing,  
1" W x 1-7/8" H, 1-1/4" Shaft,  
Discharge Outer Drive Shaft .....**\$46**



**3106 (25332)**  
Combination Wrench Tool.... **\$46**



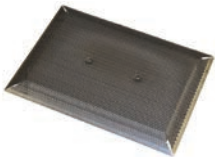
**3107 (25333)**  
Shaft Cleaning Tool ..... **\$34**



**3108 (23307)**  
Cleaning Brush..... **\$24**



**3700 (19970)**  
Complete Flame Arrestor Assembly.....\$499



**3701 (19980)**  
Flame Arrestor  
Insert Only .....\$149



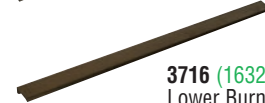
**3704 (17402)**  
Upper Burner with Reflector..\$449



**3708 (16378)**  
Lower Burner .....\$162



**3710 (16389)**  
Dual Lower Burner.....\$169



**3716 (16320)**  
Lower Burner Shield.....\$181



**3714 (17372)**  
Upper Heat Reflector .....\$375



**3712 (16794)**  
Pan Holder.....\$429



**3718 (16921)**  
Ignition Module.....\$347



**3720 (10291)**  
Igniter .....\$109



**3722 (16857)**  
Flame Sensor, Snap-In .....\$43



**3723 (25957 /17185)**  
Flame Sensor, Slotted.....\$73



**8247**  
Super Swivel, 3/4" NPT .....\$95



**GAS HOSE, 3/4" NPT**  
**8245** 36" Length.....\$179  
**8245-48** 48" Length .....\$199



**8246**  
Quick Disconnect, 3/4" NPT....\$65



**8220 (2001)**  
Gas Pressure Gauge,  
1/8" NPT .....\$58

**8220-A (2001-01)**  
Lens Only.....\$3



**3012 (2051)**  
Burner Orifice, #46, Nat Gas, . \$10



**3010 (2182)**  
Pilot Orifice, Nat Gas..... \$10

**8233 (2023)**  
Pilot Orifice, LP Gas..... \$9



**8235-2 (2179)**  
Pilot Carryover Burner,.....\$33



**3025 (2180)**  
Pilot Carryover Burner,.....\$107



**8228 (2049-A)**  
Regulator, RV48, 1/2" NPT .....\$65



**3027 (12741)**  
Solenoid Valve, 1/2 NPT, .....\$262

## PTFE BEARINGS



**3730 (6046)**  
1" W x 1-7/8" H, 1-1/4" Shaft,  
Discharge Outer Drive Shaft \$46

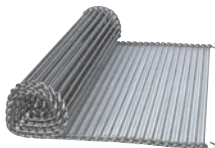


**3732 (6047)**  
1" W x 1-7/8" H, 3/4" Shaft,  
Discharge Inner Drive Shaft. \$46

**3734 (6049)**  
1" W x 1-7/8" H, 5/8" Shaft,  
Feed End .....\$43



**3713 (16208)**  
Grease Pan..... \$979



**3728 (6035)**  
Rod Belt, 13" Width .....\$59/ft.  
*5 ft. req'd on each side*



**8295 (6027)**  
#35 Drive Chain .....\$4/ft



**3736 (14572 / 23640)**  
Brushless Motor, Old Style ..... **\$2399**  
Wiring harness included (not Pictured)



**3737 (17932)**  
Brushless Motor, New Style ..... **\$839**

*Please provide broiler serial number when ordering either of these motors.*



**MOTOR SPROCKETS**

**3738 (13770)**  
For 3736 Motor ..... **\$38**

**3041 (17899)**  
For 3737 Motor ..... **\$35**



**HEATING ELEMENTS**

**3740 (15691)** 950W Main .... **\$205**

**3742 (16055)** 725W Flex ..... **\$199**



**3745 (18167)**  
On/Off Switch, 3 Position ..... **\$389**



**3744 (15480)**  
Main On/Off Switch ..... **\$195**



**3752 (13570-C)**  
Load Sensing/Temperature Control,  
11 Pin ..... **\$844**



**3754 (13737)**  
Socket Base, 11 Pin ..... **\$44**



**TEMPERATURE PROBES**

**3746 (16407)** Short ..... **\$68**

**3748 (16408)** Long ..... **\$70**



**3750 (13727-B)**  
Motor Control, 8 Pin ..... **\$599**



**8266 (4136)**  
Control Base, 8 Pin ..... **\$9**



**8274-R (4100)**  
Indicator Light, Red ..... **\$4**



**3072 (13579)**  
Motor Reversing Switch ..... **\$26**



**3075 (16034)**  
Control Transformer,  
115/230VAC, 24V ..... **\$158**



**3076 (12725)**  
Bridge Rectifier ..... **\$32**



**3756 (17409)**  
Flex Feed Belt (Complete) ....\$499



**3758 (19306)**  
Main Side Bar/Chain  
Assembly .....\$689



**3759 (15617)**  
Main Side Bar Only.....\$159



**3125 (15882)**  
Combo Clutch Assembly.....\$559



**3126 (14900)**  
Clutched Sprocket Only .....\$409



**3130 (11608)**  
Clutch Knob, Black .....\$28



**3127 (10275)**  
Thrust Washer ..... \$5



**3128 (14896)**  
Bearing, Shoulder Washer .....\$13



**3129 (10627)**  
Bearing Clip..... \$3



**3724 (11730)**  
Orifice Brush, 1/16" Diam. .... \$8



**3726 (11731)**  
Orifice Brush, 3/32" Diam. .... \$7



**8289**  
Shaft Cleaning Tool ..... \$6



**8357**  
Cleaning Brush, Soft Nylon.... \$13



**8291**  
Pliers for Rod Belt .....\$51



**8359**  
Cleaning Brush, Hard Nylon... \$11



**8296**  
#35 Chain Breaker Tool ..... \$55



**SAVE:**  
**10%** on 3-packs  
**20%** on 10-packs  
**25%** on Rolls!



**BLACK/SILVER TOASTER SHEET**  
 (12-1/4" X 33")

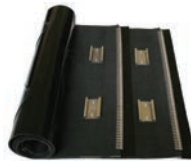
**RED TOASTER SHEET**  
 (12-1/4" X 33")

- 8216 .....Each **\$11.50**
- 8216-03 ..... 3-pack **\$31.00**
- 8216-10 ..... 10-pack **\$92.00**
- 8216-Roll ..... 12-1/4" x 108ft. Continuous Roll **\$359**  
 (equal to 39 sheets)

- 8217 .....Each **\$11.50**
- 8217-03 ..... 3-pack **\$31.00**
- 8217-10 ..... 10-pack **\$92.00**
- 8217-Roll ..... 12-1/4" x 108ft. Continuous Roll **\$359**  
 (equal to 39 sheets)



**All Toaster Sheets & Belts can be set up for DMI's Convenient Autoship Program. Call 1-800-238-5384 today!**

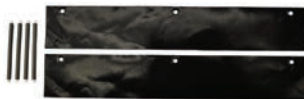


**CONVEYOR BELTS, ORIGINAL**

**CONVEYOR BELTS, CLIP STYLE**

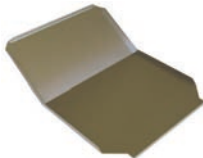
- 8216-W.....2-pack **\$92.95**

- 8217-W.....2-pack **\$92.95**



- 8618 (0011528) Top Heat Shield .....**\$235**

- 8634 (7000578) Toaster Damper Replacement Kit ..... **\$18**



- 8619 (7000322) Conveyor Cover.....**\$216**

- 8620 (0503385) Bun Chute.....**\$46**

- 8623 (7000292) Bun Feeder.....**\$98**

# TOASTER PARTS

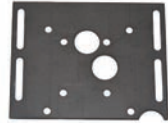
Antunes Round-Up VCT-20 Series



**8600** (7000240)  
Drive Motor Kit, 230V..... \$159



**8629** (0503589)  
Motor Bracket..... \$24



**8630** (0503590)  
Motor Plate..... \$9

## SPROCKETS



**8637** (7001652)  
Motor, 18T, 5/16" Bore.....\$15



**8604** (7001331)  
Drive Front, 24T, 1/2" Bore.....\$18

**8636** (70001329)  
Drive Rear, 20T, 1/2" Bore.....\$20

**8606** (7001312)  
Idler, 14T.....\$24



**8607** (7000207)  
Conveyor Sprocket..... \$30



**8608** (7001330)  
Drive Chain (Complete)..... \$37



**8615** (7000539 / 7000224)  
Universal VCT Bearing Kit...\$184  
*Now includes #8614 Ball Bearings*



**8613** (7000199)  
Aluminum Spacer, 2-pk.....\$20



**8609** (7000644)  
Rod, Conveyor Cover..... \$20



**8632** (0700479)  
Power Cord.....\$64



**8614** (7002108)  
Ball Bearing, 2-pk.....\$19

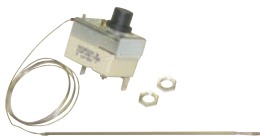


**8616** (7001327)  
Drive Shaft.....\$29

**8617** (2150117)  
Idler Shaft.....\$22



**8625 (7000810 / 4050214)**  
Platen Thermocouple .....\$49



**8626 (7001339)**  
High Limit Switch.....\$69



**8631 (7000739)**  
Control Board.....\$312



**8601 (7001436)**  
Interlock Bypass Kit.....\$7  
NOTE: the On/Off Switch has been discontinued and replaced with this bypass. Instructions Included.



**8602 (7000652)**  
Solid State Relay.....\$82



**8612 (7000882)**  
On/Off Rocker Switch .....\$18



**8621 (7000913)**  
Exhaust Fan .....\$195



**8622 (7000186)**  
Tensioner Assembly, 2-pk.....\$87



**8627 (2100323)**  
Adjustment Knob .....\$16



**8628 (210K230)**  
Leg Kit, 4-pack.....\$17



**CONVEYOR CHAIN**

**8610 (7001311)**  
Crown (Complete).....\$117

**8611 (73001310)**  
Heel (Complete).....\$117



**8624 (7001598)**  
Slide Rail Kit 2-pk (Long) .....\$53



**8633 (7001600)**  
Wear Strip (Short), 2-pk.....\$44





**BLACK/SILVER TOASTER SHEET**  
(12-1/4" X 33")

- 8216** .....Each **\$11.50**
- 8216-03** ..... 3-pack **\$31.00**
- 8216-10** ..... 10-pack **\$92.00**
- 8216-Roll** ..... 12-1/4" x 108ft. Continuous Roll **\$359**  
(equal to 39 sheets)



**6900 (7001966)**  
Conveyor Belt Kit ..... **\$199**



**6938 (7001985)**  
Rear Conveyor Cover ..... **\$187**

**6939 (7001986)**  
Front Conveyor Cover ..... **\$187**



**6941 (7001991)**  
Bun Feeder ..... **\$162**



**6940 (7001982)**  
Support Rod Kit ..... **\$13**



**6907 (7001970)** Drive Shaft w/  
28T Conveyor Sprockets... **\$139**

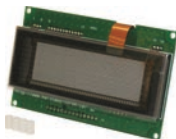
**6908 (7001971)** Idler Shaft w /  
28T Conveyor Sprockets... **\$129**



**6910 (7001976)**  
Cam Shaft ..... **\$19**



**6924 (7001965)**  
Control Label ..... **\$36**



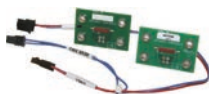
**6925 (7001958)**  
Display Board Kit..... **\$379**



**6926 (7001961)**  
Display Cover..... **\$7**



**6927 (7001957)**  
Main Board ..... **\$535**



**6928 (7002045/7001964)**  
Door Sensor Board Kit..... **\$64**



**6922 (7001293)**  
Thermocouple, Type K ..... **\$55**



# TOASTER PARTS

Antunes Round-Up **BKT-2V**



**6901 (7000500)**  
Drive Motor.....\$519



**6902 (7001977)**  
Motor Sprocket, 20T.....\$42



**6903 (7001978)**  
Drive Sprocket, 12T.....\$24



**6904 (7002034/0510017)**  
Tensioner Bracket Kit.....\$59



**6905 (7002361/7001981)**  
Idle Sprocket Assy.....\$192



**6906 (7001969)**  
Drive Chain (Complete).....\$44



**6923 (7001959)**  
Motor Board.....\$202



**6920 (7002455/0509113)**  
Motor Mount Bracket Kit .....\$104



**6921 (0509365)**  
Motor Mounting Bracket.....\$82



**6929 (7001143)**  
Solid State Relay.....\$103



**6930 (7001527)**  
Capacitor, Motor Run.....\$15



**6931 (7001528)**  
Varistor Board.....\$37



**6934 (7001144)**  
Hi-Limit Thermostat, 700F...\$162



**6935 (7001609)**  
Terminal Block, S-Series.....\$18



**6936 (7001960)**  
Capacitor.....\$48

# TOASTER PARTS

Antunes Round-Up **BKT-2V**



19



**6932 (7001440/7000913)**  
Fan Replacement Kit, 230VAC..... \$195



**6933 (7001968)**  
Fan Baffle.....\$79



**6909 (7001975)**  
Cam Compression R/L.....\$29



**6910 (7001976)**  
Cam Shaft.....\$19



**6911 (7001987)**  
Compression Spring .....2-pack \$6



**6912 (7001973)**  
Plate Tensioner .....\$8



**6913 (0601158)**  
Roller Tension Spring .....\$4



**6914 (7001033)**  
Bearing.....4-pack \$69



**6917 (7001980)**  
Idle Bearing Retainer.....\$20



**6918 (7001972)**  
Spring Guide LH/RH.....\$29



**6919 (7001979)**  
Drive Bearing Retainer.....\$8



**6937 (7001962)**  
USB Cable.....\$96



**6942 (7001016)**  
Power Cord, Twist Lock  
L6-30P.....\$265



**6943 (7001324)**  
Knob .....\$16



**TOASTER SHEET**  
(12-3/4" X 34-1/4")

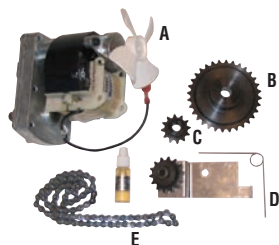
- 8218** ..... Each **\$21**  
**8218-03** ..... 3-pack **\$57**  
**8218-10** ..... 10-pack **\$168 Best Value!**



**CONVEYOR BELT**

- 8218-W** ..... 1-pack **\$89.95**

<b>A</b>	<b>8800</b>	Drive Motor Only (87-037S)	<b>\$318</b>
<b>B</b>	<b>8801</b>	Motor Drive Sprocket, 32T (537-348S)	<b>\$99</b>
<b>C</b>	<b>8802</b>	Conveyor Sprocket, 12T	<b>\$19</b>
<b>D</b>	<b>8803</b>	Idler Kit (537-735S) (includes Sprocket, Spring and Bracket)	<b>\$259</b>
<b>E</b>	<b>8821</b>	#25 Chain 79 Pitch With Connector Link (537-728S)	<b>\$10</b>



**8804** (537-378S)  
Sheet Retainer Bars ..... **\$77**



**8805** (70-050)  
Bun Adjustment Knob ..... **\$15**



**8816** (537-330S)  
Conveyor Assembly ..... **\$602**



### Conveyor Assembly component parts also sold separately:

<b>A</b>	<b>8814</b>	Upper Roller (537-411S)	<b>\$209</b>
<b>B</b>	<b>8813</b>	Shaft for Upper Roller (537-315)	<b>\$43</b>
<b>C</b>	<b>8813-1</b>	Cotter Pins for Upper Shaft, 2-pk (86-272S)	<b>\$9</b>
<b>D</b>	<b>8815</b>	Upper Bearing Kit, 2-pk (537-317S)	<b>\$109</b>
<b>E</b>	<b>8810</b>	Lower Roller (537-412S)	<b>\$212</b>
<b>F</b>	<b>8809</b>	Lower Shaft, Short (537-318S)	<b>\$49</b>
<b>G</b>	<b>8808</b>	Lower Shaft, Long (537-316S)	<b>\$49</b>
<b>H</b>	<b>8807</b>	Gear Pin Kit, 5-pk (537-279S)	<b>\$29</b>
<b>I</b>	<b>8811</b>	Lower Bearing Kit, 2-pk (537-370S)	<b>\$175</b>

Prince Castle TX Series parts continued on p.18

# TOASTER PARTS

Prince Castle TX Series & Other

## PRINCE CASTLE TX SERIES (CON'T)



**8817 (65-058)**  
Relay Switch ..... **\$75**  
*Thermal Compound Included*



**8818 (537-400S)**  
Temperature Probe ..... **\$358**  
*Thermal Compound Included*



**8820 (526-391S)**  
Hi Limit Control ..... **\$136**

## PRINCE CASTLE 197/297 SERIES



### TOASTER SHEET (16-1/2" X 20")

**8219** ..... Each **\$12**  
**8219-06** ..... 6-pack **\$57** *20% Savings*  
**8219-12** ..... 12-pack **\$99** *30% Savings*  
**8219-Roll** ..... 108 ft. continuous roll **\$440** *40% Savings*



**8500 (87-29S)**  
Motor ..... **\$239**

We carry other parts for the  
197/297 Series

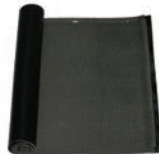
Visit [www.dmiparts.com](http://www.dmiparts.com) or  
call **1-800-238-5384** for availability

## MARSHALL AIR HST13



### TOASTER SHEET (14" X 30")

**8207** ..... Each **\$11**  
**8207-Roll** ..... **\$355**  
108 ft. continuous roll



### CONVEYOR BELT

**8207-F** Front ..... **\$199**  
**8207-B** Back ..... **\$199**



### BRONZE TOASTER SHEET

(14-3/4" X 27-1/2", 3 MIL)

- 8214 .....Each **\$10.50**
- 8214-06 ..... 6-pack **\$49**
- 8214-12 ..... 12-pack **\$88**
- 8214-ROLL .....108ft. Roll **\$320**



### TAN TOASTER SHEET

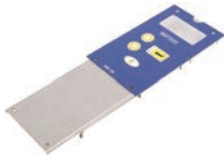
(14-3/4" X 27-1/2", 5 MIL)

- 6822 .....Each **\$13**
- 6822-06 ..... 6-pack **\$62**
- 6822-12 ..... 12-pack **\$109**



### 6800 (526-025S)

Motor Kit..... **\$592**



### 6801 (526-073S)

Membrane Switch w/ Overlay ...**\$173**



### 6802 (526-021S)

Display Board..... **\$71**



### 6803 (525-106S)

Main Board ..... **\$949**



### 6804 (85-144-24S)

Power Supply Board ..... **\$467**



### 6806 (65-058S)

Solid State Relay, 50 Amp..... **\$75**



### 6807 (65-064S)

Power Relay ..... **\$69**



### 6805 (78-233S)

Rocker Switch..... **\$61**



### 6808 (526-022S)

Probe ..... **\$137**



### 8820 (526-391S)

Hi Limit Control ..... **\$124**



**6815** (526-289S)  
Drive Train Assembly.....\$648



**6812** (526-101S)  
Tensioner Assembly.....\$99



**6813** (86-558S)  
Tensioner Spring .....\$21



**8821** (537-728S)  
#25 Chain.....\$10



**6809** (526-392S)  
Idle Sprocket, Each.....\$43



**6814** (526-081)  
Motor/Drive Sprocket, Each. \$143



**8807** (537-279S)  
Gear Pin Kit, 5-pk .....\$31



**6811** (526-710S)  
Gear Kit, 2-pk.....\$265



**6818** (526-032S)  
Handle, Each.....\$13



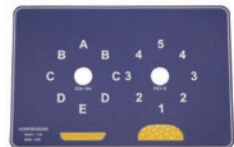
**6817** (526-221S)  
Knob Kit, 2-pk.....\$48



**6816** (526-023S)  
Fan Kit, 2-pk .....\$147



**6819** (526-627S)  
Platen.....\$986



**6821** (526-184S)  
Major Side Overlay.....\$22

**6820** (526-185S)  
Minor Side Overlay .....\$22

# EGG COOKER PARTS

*Antunes Round-Up ES-1200*



**8663 (7000833)**  
Control Board.....\$239



**8664 (1001425)**  
Label for Control Board .....\$22



**8670 (7000391)**  
A/C Isolator Board .....\$64



**8667 (0700552)**  
Power Cord.....\$59



**8612 (7000882)**  
On-Off Rocker Switch.....\$18



**8660 (7001338)**  
Timer Pushbutton Switch.....\$45



**8661 (210K122)**  
Leg Kit, 4-pk.....\$49



**8662 (210K108)**  
Tip, Rubber Feet, 4-pk.....\$14

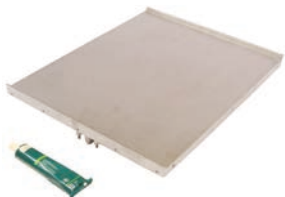




**8672 (7001515)**  
Egg Rack, 12 Portion.....\$399



**8675 (7001514)**  
Cover.....\$359



**8673 (7000674)**  
Platen.....\$899



**8674 (2180259)**  
Scrap Pan.....\$74



**8625 (7000810 / 4050214)**  
Platen Thermocouple.....\$49



**8665 (7001145 / 4010187)**  
Transformer, 240V.....\$41



**8666 (040K251)**  
Strain Relief Kit.....\$18



**8668 (7000272)**  
Hi Limit Thermostat.....\$162



**8669 (7000370)**  
Solid State Relay.....\$89



**8671 (7000136)**  
Terminal Block.....\$20

## OVEN MITTS



**8335**  
Tucker QuickClean™ Oven Mitt,  
15" Length, 450°F.....\$30 ea



**8344**  
Tucker Puppet Mitt, Nomex® with  
VaporGuard™ and Kevlar Palm  
15" Length, 900°F..... \$45 ea



**8354**  
Oven Mitt, 17" Length..... \$8 ea

## BROILER MITTS



**8353**  
Tucker Three-Finger QuickClean™  
Gloves, Poly Cotton with Kevlar  
Hand, 18" Length, 650°F ...\$98/pr.



**8355**  
Broiler Mitts, Neoprene Coated,  
Heavy Duty Insulated,  
17" Length, 350°F ..... \$34/pr.

## FRYER GLOVES



Tucker QuickClean™ Fryer Gloves  
20" Length, 300°F.....\$32/pr.

**8330-M** Size Medium  
**8330-L** Size Large  
**8330-XL** Size X-Large



**8356**  
Fryer Gloves, Neoprene Coated,  
Heavy Duty Insulated,  
17" Length, 350°F .....\$34/pr.



**8356-31**  
Fryer Gloves, Neoprene Coated,  
Heavy Duty Insulated,  
21" Length, 350°F.....\$49/pr.

## CUT RESISTANT GLOVES



### SAFETY TIP

Remember to inspect your safety apparel on a regular basis and replace as needed to keep your employees safe!



Tucker Red Glove.....\$21 ea

White/Blue Glove.....\$18 ea

**8405-S** Small  
**8405-M** Medium  
**8405-L** Large

**8404-S** Small  
**8404-M** Medium  
**8404-L** Large

## UTILITY WORK GLOVES



Tucker Cut-Resistant  
 Freezer Gloves.....\$14/pr

**8406-M** Medium  
**8406-L** Large  
**8406-XL** X-Large

- Synthetic knit shell creates high level of flexibility & dexterity
- Palm coating withstands exposure from liquids
- Brush fleece lining provides thermal properties



Tucker Cut-Resistant  
 Stocking Gloves.....\$16/pr

**8407-M** Medium  
**8407-L** Large  
**8407-XL** X-Large

- Provides a good balance of comfort, dexterity & cut resistance
- Palm coating provides excellent grip & tactility



Search for parts  
and place  
orders online

[www.dmiparts.com](http://www.dmiparts.com)



- Fast Reading (Approx. 1 second)
- Runs on 2 AAA Batteries (included)
- Memory for last 25 readings

**8413**  
Infrared Forehead Thermometer ..... **\$59**



**8333**  
Tucker QuicKlean™ Apron,  
36" ..... **\$42**



**8361** Apron,  
Heavy Duty PVC,  
35" x 45" ..... **\$19**



**8362** Face Shield (w/visor), w/  
Deluxe Adjustment..... **\$28**

**8362-1** Replacement  
Visor Only, 8" x 15-1/2" ..... **\$10**



**8364**  
Tucker QuicKlean™  
ShinGuards™ ..... **\$55**



**10" Hi-Top Boots**  
**8363** Size Large ..... **\$54**  
**8363-XL** Size X-Large..... **\$54**



**8403**  
Wall Mount for Vinyl PVC  
Gloves..... **\$15**  
(Hardware included)

## CEILING TILE PROTECTOR



**Keeping your ceiling tiles clean has never been easier!**

- The Ceiling Tile Protector shown here is black for illustration purposes only. It is clear and nearly invisible.
- Fast and easy installation.
- Reduces ceiling maintenance costs.
- National Sanitation Foundation (NSF) tested.
- Fits all standard diffusers (24" x 24")

**8577**..... each **\$35**

**8577-05** ..... 5-pack **\$149**

## SCOTCH-BRITE™ FRYER & KITCHEN CLEANING TOOL

**8373**

**Starter Set (Includes 1 Tool, Each of 3 Interchangeable Cleaning Pads).....\$55**

**3 Powerful Positions**



Acute Position  
**POWER SCRUBBING**



Extended Position  
**LONGER REACH**



Right Position  
**HARD SPOTS**

## INTERCHANGEABLE CLEANING PADS FOR #8373 TOOL

Can be used wet or dry at temperatures up to 350°F



**8373-1**

Gray Heavy Duty Pads..6-pk **\$14**



**8373-2**

Green Medium Duty Pads..6-pk **\$14**



**8373-3**

Blue Low Scratch Pads..6-pk **\$14**

Thousands of loyal customers agree:  
DMI's convenient **AUTOSHIP PROGRAM** can't be beat!

**1** Choose any quantity & combination of items found in our catalog. The most popular Autoship items are:

**Toaster Sheets & Conveyor Belts, Safety Apparel,  
Gycor Filter Pads, Taylor Blades, Brush Kits & Tune-Up Kits**

**2** Choose frequency of Autoship:

**Monthly, Bi-Monthly, Quarterly, or Semi-Annually**



**10000-B**  
Looped Mop Head, Blue .....\$9



**10000-R**  
Looped Mop Head, Red .....\$9

**10003**  
Mop Handle,  
54" .....\$9



**10004**  
Wringer, Green / Red .....\$53



**10005**  
Wringer, Blue / Yellow.....\$53



**10006-B**  
Mop Bucket, Blue, 26 Qt..... \$52



**10006-R**  
Mop Bucket, Red, 26 Qt.....\$52



**10015**  
Lobby Dust Pan w/ Handle .....\$12



**10010-B**  
Angled Broom Head, Blue.....\$9



**10010-G**  
Angled Broom Head, Green .....\$9



**10010-R**  
Angled Broom Head, Red .....\$9



**10011**  
Broom Handle, 48" .....\$9



**10025**  
Tool Holder .....\$11



**10020**  
Restroom Caddy, Yellow .....\$10



**10021**  
Toilet Brush, Yellow .....\$7

## HAND BRUSHES



**10018-B**  
Blue.....\$4



**10018-R**  
Red .....\$4



**10018-W**  
White .....\$4



**10018-Y**  
Yellow .....\$4



**10507**  
Viper® Pro Multi-Purpose Safety  
Cutter, Hi-Vis Yellow..... **6-pk \$19**



**10508**  
Viper® Pro Bag Opener,  
Safety Orange ..... **6-pk \$16**



**10509**  
X-tra Safe® Disposable Utility  
Knife, Yellow ..... **6-pk \$25**



**8574**  
Pouchmate Pouch Opener ..... **\$4**



**8575**  
Bucket Opener, Plastic..... **\$13**



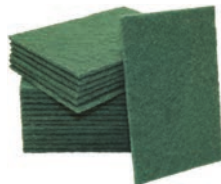
**8576**  
Safety Box Cutter ..... **\$4**



**8455**  
Red Sani-Pail, 6 Qt. .... **\$5.50**



**8456**  
Blue Sani-Pail, 6 Qt. .... **\$5.50**



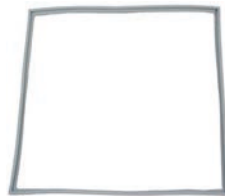
**9013**  
Scouring Pad, Green, Medium Duty,  
6" x 9" ..... **Box of 20 \$19**



**8562** No Slip Magnetic  
Doorstop ..... **\$8**



**8564** Table Wobble  
Stopper ..... **6-pk \$5**



**4900** Silver King  
Door Gasket, 27" x 28" ..... **\$109**  
(SKTR7F Fridge/  
SKUCF7F Freezer)





**4606-LH**  
Complete Blower Module, Left Hand  
For 36" Station.....**\$629**



**4606-RH**  
Complete Blower Module, Right Hand  
For 36" Station.....**\$629**



**4610**  
On/Off Switch.....**\$72**



**4611**  
Relay.....**\$43**



**4614**  
Hi Limit Thermostat.....**\$39**

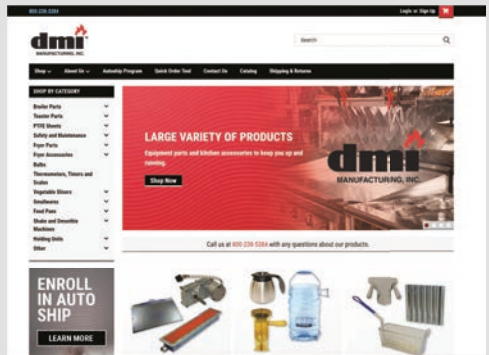


**4612**  
Divider for 32" / 34" / 36" Stations.....**\$79**



**4613**  
Filter Assembly for 36" Station.....**\$299**

Visit us online at  
**the NEW & improved**  
[www.dmiparts.com](http://www.dmiparts.com)  
and see how simple it  
is to search for parts  
and place orders 24/7



## DMI is proud to offer Frymaster replacement parts!

### FOR FRYMASTER MJ45 AND H50 UNITS



**6000 (806-4206)**  
Temperature Probe  
Assembly .....\$218



**6001 (210-0681)**  
Probe Guard.....\$22



**6002 (826-1177)**  
Hi-Limit Thermostat.....\$189



**6003 (807-6084)**  
Heat Relay, 12V .....\$39



**6004 (806-3660)**  
Sound Device High Output...\$48



**6005 (807-2103)**  
Drain Valve Switch.....\$18



**6006 (807-4978)**  
Dual Voltage Transformer \$110



**6007 (826-3191)**  
Filter Pump/Gasket Kit .....\$509

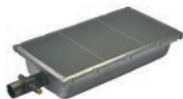


**6008 (826-1712)**  
Filter Pump Motor.....\$699

## FOR FRYMASTER H50 UNITS ONLY



**6100 (826-0981)**  
Igniter with Gasket, Nat.....\$148



**6101 (826-1072)**  
Universal Burner, Nat/LP...\$520



**6112 (826-0931)**  
Burner Insulation Kit  
for #6101.....\$146



**6105 (826-2024)**  
Ignition Cable.....\$54



**6114 (826-3668)**  
Full Vat Fenwall Ignition  
Module Conversion Kit.....\$399



**6116 (826-3669)**  
Duel Vat Fenwall Ignition  
Module Conversion Kit....\$499



### GAS VALVES

**6106 (826-1122)**  
Honeywell, Nat.....\$205

**6107 (826-1120)**  
Conversion Kit,  
RS to Honeywell, Nat.....\$273



**6108 (106-2994SP)**  
Blower Assembly.....\$363



**6109 (826-2264)**  
Interface Board.....\$306



**6110 (810-0403)**  
Burner Orifice, Nat, O-4000 ft..\$29



**6111 (807-3843)**  
Fuse, 3 Amp, 250V.....\$10

**FOR FRYMASTER MJ45 UNITS ONLY**



**6050 (806-0184)**  
Operating Thermostat.....**\$399**



**6051 (810-1873)**  
Thermopile with Push-on  
Terminal.....**\$93**



**6052 (810-0617)**  
Thermopile with  
Coaxial End.....**\$139**



**6054 (807-3294)**  
Gas Valve, Honeywell,  
Nat, 24V.....**\$318**



**6055 (807-1603)**  
Gas Valve, Honeywell, Nat,  
Millivolt.....**\$318**



**6053 (810-0426)**  
Pilot, Nat.....**\$88**



**6056 (826-1596)**  
Gas Valve Conversion Kit,  
RS to Honeywell, Nat.....**\$429**



**6057 (806-3548/826-2574)**  
Interface Board.....**\$429**

*Don't see the Frymaster parts you need?  
Call us at 1-800-238-5384 for pricing & availability of other items.*

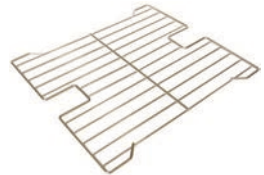


### FRY BASKETS

**8369** Green Handle 12"L x 6"W x 5-3/8"H ..**\$29**  
**8387** Blue Handle 13"L x 5-1/2"W x 5-1/2"H..**\$27**

### FRY BASKETS W/ LID & DIVIDERS

**8389** Yellow Handle, 5 slot 12-1/2"L x 6-3/8"W x 3-1/2"H ..**\$27**  
**8369-4** Blue Handle, 10 slot 12-1/2"L x 6-1/8"W x 4"H..**\$26**



**8369-3** Fry Basket Submerger (for use with #8369)..... **\$21**

**8369-1** Fry Basket Insert (for use with #8369 or #8387) **\$38**

**8388** Fry Basket Support Rack (fits Frymaster MJ45 & H50) ..... **\$109**

## SEDIMENT TRAYS

- Fits beneath your fry baskets to catch crumbs and sediment.
- Can be removed quickly and easily for cleaning.
- Helps to lengthen the life of your oil.



**8370**  
 14"L x 12.5"W X 6.5"H **\$85**  
*Fits Most Frymaster Gas Fryers*



**8372**  
 13.25"L x 11.75"W X 6.5"H **\$99**  
*Fits Most OCF/GL Gas Fryers*



**5201**  
 Pitco Basket Support Rack, Twin  
 13-1/2"L x 6"W..... **\$155**



**5202**  
 Pitco Basket Support Rack, Full  
 13-1/2"L x 13-1/2"W ..... **\$155**



**5203**  
 Pitco Basket Support Rack  
 13-1/2"L x 17-1/2"W ..... **\$155**

**SHORTENING SHUTTLE®**



Shortening Shuttle® ..... **\$739**

- **STOPS HOT OIL BUCKET BURNS!**
- **SAVES 30-50%** on labor costs and lowers your liability exposure

DMI Part #	<b>8368</b>	<b>8368-S</b>
Model #	SS-611-T	SS-611-TL
Capacity	80 Lbs. / 10.5 Gal.	60 Lbs. / 9 Gal.
Min. Fryer Drain Hgt.	11.5 in.	9.9 in.
Max. Waste Cont. Hgt.	49.5 in.	49.5 in.
Overall Dimensions	12"W x 12"H x 58"L	12"W x 10"H x



**8368-1** Wall Hook.....**\$16**



**8368-2** Top Handle .....**\$31**  
**8368-3** Wheel Handle .....**\$49**



**8368-4** Single Wheel .....**\$47**

*Manufactured by Worcester Industrial Products, Worcester, MA.*



**8247-1** Super Swivel,  
1" NPT .....**\$159**



**GAS HOSE, 1" NPT**  
**8244** 36" Length.....**\$185**  
**8244-48** 48" Length.....**\$209**



**8246-1** Quick Disconnect,  
1" NPT .....**\$79**



**8369-2** Universal  
Fry Basket Hanger.....**\$119**



**8378** Fryer Drain  
Extension Pipe .....**\$65**



**8378-1** Vat Cover,  
Frymaster Gas.....**\$79**

## FRY BAGGING SCOOPS



**8371**  
Plastic, Dual Handle..... **\$19**



**8371-1**  
Plastic, Right Hand ..... **\$19**

**8371-2**  
Plastic, Left Hand..... **\$19**



**8371-DH**  
Metal, Dual Handle..... **\$19**



**8371-RH**  
Metal, Right Hand ..... **\$19**

**8371-LH**  
Metal, Left Hand ..... **\$19**



**5634** Grate Comb for  
Forced Air Fry Station ..... **\$10**



**8371-OR**  
Onion Ring Scoop ..... **\$30**



**8379**  
Fry Waste Bucket ..... **\$15**

## ACCUSALT SHAKER



**8440** AccuSalt Shaker with  
6.5 g Gray Insert Cover..... **\$59**

**8440-3**  
Insert Container ..... **\$12**



**8439** AccuSalt Shaker with  
3.7 g Black Insert Cover ..... **\$59**



**8440-1**  
Amber End Cap ..... **\$12**



**8440-4**  
Body Only ..... **\$34**



**8439-1**  
Black End Cap ..... **\$16**



**8440-2**  
Gray Insert Cover, 6.5 g.... **\$12**



**8439-2**  
Black Insert Cover, 3.7 g ..... **\$11**

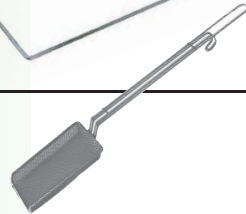
Fryer Cleaning Scoop

**8374 Frymaster (23" length) ..... \$55****5204 Pitco (19" length)..... \$49**

Fryer Cleaning J-Rod

**8374-1 Frymaster (29" length) .....\$15****5200 Pitco (21" length) .....\$79****8374-2**Fryer Skimmer, Rectangular ..... **\$19**

(20" length, 4" width)

**8374-2A**Fryer Skimmer, Square .....**\$14**

(19-1/2" length, 6-1/2" width)

**8374-3**Fryer Brush, Right Angle.....**\$12**

(21" length)

**8374-4**Fryer Brush, Straight.....**\$12**

(23" length)

**8430**Ice/Shortening Scoop, 58 oz.....**\$25**

(14-1/2" length)

**8432**Shortening Ladle, 32 oz.....**\$25**

(19" length)







**8367**  
Shortening Saver ..... **\$165**  
• Fits on top of standard 5 gal. pail  
• Keeps crumbs out of fryers/multipots



**8376**  
Shortening Test Kit ..... **\$16**  
**8376-D**  
Dropper Only ..... **\$6**



**5549**  
Vito® 50/80 Filters,  
Box of 100 ..... **\$219**



**5535**  
Plain Paper Filters, 16.5" x 25"  
Case of 100 ..... **\$59**



**5550**  
Plain Paper Envelopes w/ Center  
Hole through one side, 19" x 20.5"  
Case of 100 ..... **\$146**

## SCOTCH-BRITE™ FRYER & KITCHEN CLEANING TOOL

**8373**  
Starter Set (Includes 1 Tool, Each of 3 Interchangeable Cleaning Pads ..... **\$55**

3 Powerful Positions



Acute Position  
**POWER SCRUBBING**



Extended Position  
**LONGER REACH**



Right Position  
**HARD SPOTS**

## INTERCHANGEABLE CLEANING PADS FOR #8373 TOOL

Can be used wet or dry at temperatures up to 350°F



**8373-1**  
Gray Heavy Duty Pads.. **6-pk \$14**



**8373-2**  
Green Medium Duty Pads.. **6-pk \$14**



**8373-3**  
Blue Low Scratch Pads.. **6-pk \$14**

- **LENGTHENS OIL LIFE** - Clarifies, brightens & freshens shortening more effectively than competitive products.
- **IMPROVES FOOD QUALITY** - Less oil absorbed into food.
- **SPECIAL INGREDIENT** - FRI-MOR™ filter powder (in the pad) chemically alters the oil to remove impurities.
- **CONVENIENT** - Compact 30-day packaging. Easy to store and easy to monitor frequency of shortening filtration.
- **SAVES MONEY** - Less add-back in fryers reduces excessive top-off with the more expensive oil.



See page 41 for  
Vito® and Plain  
Paper Filters.

ENVELOPES			
DMI# (Gycor #)	Dimensions	Description	Price per Case of <b>30</b>
<b>5506</b> (ESA-149)	16" x 16" 1.125" Center Hole (through one side)	<b>Filter Screen Adapter</b>	<b>\$74</b>
<b>5509</b> (ESA-126)	13.75" x 20.375" 1.50" Center Hole (through one side)	<b>Filter Screen Adapter</b>	<b>\$73</b>
<b>5516</b> (ESA-154)	11" x 19" 0.75" Side Hole (through both sides)	<b>Filter Screen Adapter</b>	<b>\$66</b>
<b>5520</b> (ESA-103)	16.75" x 22.5" 0.6875" Side Hole (through one side)	<b>Filter Screen Adapter</b>	<b>\$95</b>
<b>5525</b> (ESA-161)	17.5" x 21" 1.50" Side Hole (through one side)	<b>Filter Screen Adapter</b>	<b>\$89</b>
<b>5511</b> (ESA-124)	13" x 13" No Hole	<b>F.A.S.T. Portable</b> (No retrofit)	<b>\$58</b>
<b>5515</b> (CH-1630)	14" x 15" 0.875" Center Hole (through both sides)	<b>F.A.S.T. Portable</b> (retrofit w/center stand pipe)	<b>\$51</b>
<b>5507</b> (ESA-153)	11" x 20" 0.75" Center Hole (through both sides)	<b>Low Boy (J50S)</b> Portable	<b>\$67</b>
<b>5522</b> (ESA-169)	11" x 20" 1.5" Center Hole (through one side)	<b>Low Boy (J50SA), Frontline Portable</b>	<b>\$67</b>
<b>5508</b> (ESA-129)	19" x 20.5" 1.375" Center Hole (through one side)	<b>Pitco</b> Built-In	<b>\$93</b>
<b>5527</b> (ESA-105)	14.25" x 22.5" 1.5" Off-Center Hole (through one side)	<b>Henny Penny</b> Built-In	<b>\$81</b>
<b>5528</b> (ESA-156)	23" x 32" 1.5" Side Hole (through one side)	<b>UltraFryer</b>	<b>\$131</b>





## AUTOSHIP PROGRAM

All Gycor products can be set up for DMI's convenient Autoship Program. Call **1-800-238-5384** today. Never worry about forgetting to order again!



### SHEETS

DMI# (Gycor#)	Dimensions	Description	Price Per Case of <b>30</b>
<b>5500</b> (SSA-140)	14.5" x 21.75"	<b>Frymaster</b> FP3 & Pro Series Built-In	<b>\$45</b>
<b>5501</b> (SSA-109)	12.5" x 21.5"	<b>Frymaster</b> FP1, FP2, FM2 Built-In	<b>\$41</b>
<b>5503</b> (SSA-108)	12.5" x 18"	<b>Frymaster</b> FM1 Built-In	<b>\$37</b>
<b>5517</b> (SSA-115)	14.1875" x 29.1875"	<b>Frymaster</b> Built-In	<b>\$44</b>
<b>5524</b> (SSA-1504)	11.25" x 19.125" Thicker Grade *	<b>Frymaster</b> OCF <b>Pitco</b> ROV / SSHLV	<b>\$46</b>
<b>5505</b> (SSA-117)	16.375" x 24.375"	<b>Dean / Frymaster</b> Built-In	<b>\$52</b>
<b>5510</b> (SSA-116)	16.375" x 18.375"	<b>Dean / Frymaster</b> Portable	<b>\$43</b>
<b>5526</b> (ESA-1164)	16.375" x 18.375" Thicker Grade *	<b>Dean / Frymaster</b> Portable	<b>\$58</b>
<b>5504</b> (SSA-125)	9.625" x 15"	<b>Filtercorp Adapter</b> F-16	<b>\$46</b>
<b>5504-1</b> (G-100)		Gasket for use with F-16 Pads	ea. <b>\$24</b>
<b>5523</b> (SSA-170)	12.5" x 15"	<b>Filtercorp Adapter</b> F-40	<b>\$49</b>
<b>5523-1</b> (G-200)		Gasket for use with F-40 Pads	ea. <b>\$30</b>
<b>5502</b> (SSA-150)	11.25" x 19.125"	<b>Pitco</b> SGH50 & AG14S Built-In	<b>\$37</b>
<b>5512</b> (SSA-113)	13.5" x 24"	<b>Pitco</b> Portable P14	<b>\$44</b>
<b>5519</b> (SSA-135)	17.5" x 28"	<b>Pitco / Dar Pro</b> Portable P18, P24, P34	<b>\$57</b>
<b>5518</b> (SSA-168)	18" x 25"	<b>RTI System</b>	<b>\$53</b>

\* Thicker Grade Pads are made from a heavier material for a faster flow rate.

### CIRCLES

<b>5513</b> (CSA-134)	21.875" Diam. No Hole	<b>Renu</b> Portable	<b>\$61</b>
<b>5514</b> (CSA-120)	21.875" Diam. 1.625" Center Hole	<b>Prince Castle</b> Portable	<b>\$61</b>

# HOOD FILTERS

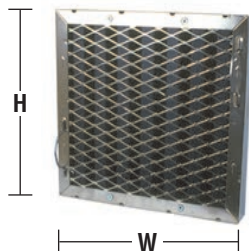


**Flame Gard®**



**DELUX**  
Teflon Coated  
Type I Hood Filters

- 94% Efficient at Grease Extraction
- Spark Arrestor Frame
- Bale Handles Included



Part #	Trade Size	Actual Dimensions		Price
	H x W	H x W x D		
<b>8380-T</b>	10 x 16	9-1/2 x 15-1/2 x 1-7/8		<b>\$169</b>
<b>8381-T</b>	10 x 20	9-1/2 x 19-1/2 x 1-7/8		<b>\$169</b>
<b>8382-T</b>	16 x 16	15-1/2 x 15-1/2 x 1-7/8		<b>\$181</b>
<b>8383-T</b>	16 x 20	15-1/2 x 19-1/2 x 1-7/8		<b>\$185</b>

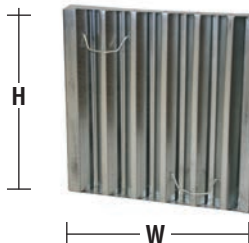


**Flame Gard®**



**ECONO**  
Steel Hood Filters

- Unique "Frameless" Design Maximizes Capture Area
- Lightweight
- Bale Handles Included



Part #	Trade Size	Actual Dimensions		Price
	H x W	H x W x D		
<b>8380-S</b>	10 x 16	9-1/2 x 15-1/2 x 1-5/8		<b>\$59</b>
<b>8381-S</b>	10 x 20	9-1/2 x 19-1/2 x 1-5/8		<b>\$59</b>
<b>8382-S</b>	16 x 16	15-1/2 x 15-1/2 x 1-5/8		<b>\$65</b>
<b>8383-S</b>	16 x 20	15-1/2 x 19-1/2 x 1-5/8		<b>\$71</b>
<b>8385-S</b>	20 X 16	19-1/2 x 15-1/2 x 1-5/8		<b>\$71</b>
<b>8384-S</b>	20 x 20	19-1/2 x 19-1/2 x 1-5/8		<b>\$75</b>

## ORDERING TIPS

- Please order with the **Height (H)** dimension first and the **Width (W)** dimension second
- Filters should always be installed with the baffles running in the Vertical (top to bottom) position

## SAFETY COATED – TEARDROP SHAPE



60 WATT COATED, 120V

8365..... \$6.50  
 8365-06..... **\$34 6-pack**

## INFRA-RED HEAT LAMP – CLEAR



375 WATT, 120V

8366..... \$12.50  
 8366-06..... **\$66 6-pack**

375 WATT COATED, 120V

8366C..... \$24  
 8366C-06..... **\$129 6-pack**

125 WATT, 120V

8395..... \$8  
 8395-06..... **\$43 6-pack**

125 WATT COATED, 120V

8395C..... \$19  
 8395C-06..... **\$103 6-pack**

250 WATT, 120V

8396..... \$8  
 8396-06..... **\$43 6-pack**

250 WATT COATED, 120V

8396C..... \$24  
 8396C-06..... **\$130 6-pack**

**SAVE 10% WHEN YOU PURCHASE  
 BULBS IN A 6-PACK!**

## SAFETY COATED – TRADITIONAL SHAPE



40 WATT COATED, 130V

8398..... \$6  
 8398-06..... **\$32 6-pack**

60 WATT COATED, 130V

8399..... \$6  
 8399-06..... **\$32 6-pack**

40 WATT COATED, 250V

8391..... \$9  
 8391-06..... **\$49 6-pack**



**There are several  
 convenient ways to  
 place your order with DMI**



**Call Toll Free 1-800-238-5384  
 weekdays 8:15 am to 5:00 pm**

**Or order anytime:**

**Online:** [www.dmiparts.com](http://www.dmiparts.com)

**Email:** [orders@dmiparts.com](mailto:orders@dmiparts.com)

**Toll Free Fax:** 866-302-9397

## VEGETABLE SLICERS

## PRINCE CASTLE SABER KING



**8530** Saber King Chassis ..... **\$849**

- Save time and labor
- Slice 4 tomatoes at once
- Easy to use and clean
- Blade covers improve safety
- Interchangeable blade cartridges adds flexibility



**8536**  
Cross Bar Assembly..... **\$60**



**8537**  
Hand Assembly..... **\$157**



**8538**  
Cartridge Lock .... **\$24**



**8539**  
Replacement Leg . **\$44**



**8540**  
Rubber Feet . 4-pk **\$36**

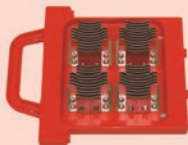


**8541**  
Linkage Pin Pack . **\$36**

## TOMATO



**8531-1**  
Blade Cartridge, 1/4"..... **\$399**

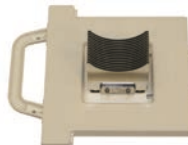


**8531-2**  
Pusher Cartridge, 1/4" ..... **\$279**

## ONION



**8532-1**  
Blade Cartridge, 3/16"..... **\$329**



**8532-2**  
Pusher Cartridge, 3/16" ..... **\$225**

## PRINCE CASTLE SABER KING MINI



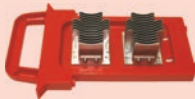
**8525** Saber King Mini Chassis ..... **\$729**

- 40% narrower and lighter weight than the Saber King
- Interchangeable blade cartridges adds flexibility
- Blade covers improve safety
- Save time and labor
- Easy to use and clean

### TOMATO



**8526-1**  
Blade Cartridge, 1/4" ..... **\$299**



**8526-2**  
Pusher Cartridge, 1/4" ..... **\$175**

### ONION



**8527-1**  
Blade Cartridge, 3/16" ..... **\$299**



**8527-2**  
Pusher Cartridge, 3/16" ..... **\$209**

DMI Manufacturing, Inc.  
Cleveland, OH



When will your FedEx Ground shipment be scheduled for delivery?

1 Day 2 Days 3 Days 4 Days 5 Days 6 Days 7+ Days

**NORMAL DELIVERY SCHEDULE IN DAYS**  
(Next Day and 2nd Day Delivery Also Available)



My team is dedicated to getting your orders shipped immediately so that you can keep your restaurants running smoothly.

-Jeremy, Warehouse Manager

# VEGETABLE SLICERS

## PRINCE CASTLE TOMATO SABER 943 SERIES



**8550** Slicer, 1/4" Blades included (9 Blades) ..... **\$529**

**8550-H** Slicer, 1/4" Blades included (11 Blades, High Yield) ..... **\$529**

- Perma-Tight blade cartridge system never needs adjustment
- Tomato Catcher reduces clean-up and improves food safety



**8550-1** Blade Set, 1/4" (9 Blades) .... **\$115**

**8550-1H** Blade Set, 1/4" (11 Blades,  
High Yield) ..... **\$119**



**8550-4** Pusher Head, 1/4" ..... **\$85**

*Works with both the 9 and 11 blade 1/4" sets.*



**8550-2**  
Catcher, Red Plastic ..... **\$25**



**8550-3**  
Pusher Handle, Red Plastic ..... **\$39**



**8550-6**  
Guide Rod Bearing ..... **ea \$14**



**8550-7**  
Guide Rod Cushions .... **4-pk \$26**



**8550-5**  
Replacement Feet ..... **4-pk \$15**

## CUT RESISTANT GLOVES

**Tucker Red Glove** .... **\$21 ea**

**8405-S** Small  
**8405-M** Medium  
**8405-L** Large



**White/Blue Glove** ..... **\$18 ea**

**8404-S** Small  
**8404-M** Medium  
**8404-L** Large





## NEMCO EASY TOMATO SLICER

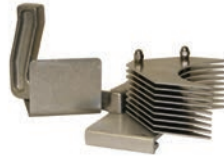


- 8556** (N55600-2) Slicer, 1/4" Blades ..... **\$389**
- 8556-A** (N55600-1) Slicer, 3/16" Blades ..... **\$389**

- Cleanly cut mounds of uniformly sliced tomatoes in seconds
- Razor sharp stainless steel blades
- Unique design provides long life



**8556-1** Blade Set, 1/4" (10 Blades).....**\$49**  
**8556-1A** Blade Set, 3/16" (13 Blades).....**\$49**



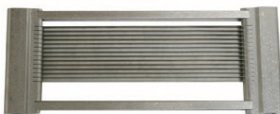
**8556-4** Pusher Head, 1/4" .....**\$149**  
**8556-4A** Pusher Head, 3/16" .....**\$149**

## NEMCO EASY TOMATO SLICER II™



- 8557** (N56600-2) Slicer, 1/4" Blades ..... **\$475**
- 8557-A** (N56600-1) Slicer, 3/16" Blades ..... **\$475**

- No need to adjust the blades
- New Pretensioned blade cartridge maximizes safety and blade longevity
- Blades are razor sharp stainless steel for a smooth, precise cut



**8557-1** Blade Set, 1/4" (11 Blades).....**\$89**  
**8557-1A** Blade Set, 3/16" (14 Blades).....**\$89**



**8557-4** Pusher Head, 1/4" .....**\$159**  
**8557-4A** Pusher Head, 3/16" .....**\$179**



**8902**  
 Foot Pad..... **\$3.50 ea**

**We carry additional replacement parts for Nemco Slicers and Choppers.**

**Call 1-800-238-5384 for pricing and availability.**

## NEMCO EASY SLICER VEGETABLE CUTTER



**8560 (N55200AN) Slicer, Adjustable Cut .....\$549**

- Compact, portable, and easy to use
- Set the desired thickness by turning a thumb screw (calibrated in 1/16" increments to a maximum of 1/2")
- Mounting base (sold separately) attaches easily to countertops or other flat surfaces



**8560-1**  
Blade Set, Adjustable Cut..... **\$75**



**8563**  
Shaft Lock Assembly ..... **\$28**



**8561**  
Guard ..... **\$75**



**8565**  
Portable Base ..... **\$229**

## SLICER BLADE CLEANING BRUSHES



**8549**  
3" Bristles ..... **\$32**



**8905**  
2" Bristles ..... **\$29**



**8907**  
4-1/2" Bristles... **\$9**



**8551**  
Tomato Core-It . **\$3.50**

*See page 27 for Cut Resistant Gloves*

## NEMCO EASY ONION SLICER



**8922**  
Blade Set, 3/16",  
(Includes Blade Pin).....**\$155**



**8925**  
Pusher Head, 3/16".....**\$359**



**8906**  
Pusher Head Cleaning Tool..**\$15**



**8923**  
Blade Pin.....**\$7**



**8924**  
Pusher Plate.....**\$5**



**8924-4**  
Pusher Head Screw .....**\$3**



### FRONT & REAR LEGS

**8900**  
Right Front/Left Rear..... **\$35**

**8901**  
Left Front/Right Rear..... **\$35**



**8902**  
Replacement Foot Pad  
(4 required)..... **\$3.50 ea.**



**8908**  
Replacement  
Spring..... **\$5**

Choosing your replacement legs:  
To determine if you need left or right  
& front or rear, face the slicer as if  
you are slicing the onion or lettuce.



**8926**  
Lever/Handle.....**\$55**



**8903**  
Ring Pin..... **\$10**



**8924-1**  
Middle Spacer....**\$2**



**8924-2**  
End Spacer...**\$2**



**8924-3**  
Red End Spacer.. **\$2**



**8924-5**  
Hex Nut...**\$2**



**8924-6**  
Acorn Nut.... **\$2.50**



- Fast Reading (Approx. 1 second)
- Runs on 2 AAA Batteries (included)
- Memory for last 25 readings

8413

Infrared Forehead Thermometer ..... \$59

## ? DID YOU KNOW ?

DMI has been family owned  
and operated since 1997

We are known nation-wide  
for our outstanding  
customer service team!

### ATKINS AQUATUFF™ 351 WRAP AND STOW SERIES DIGITAL THERMOMETER



**8415-BP** Thermometer with  
Bell (Surface) Probe.....\$269



**8415-NP** Thermometer with  
Needle Probe .....\$269

- **-100°F to 500°F**
- IPX7 Waterproof rated
- Auto shut-off
- 2 AAA Batteries included
- Wrap & Stow™ Probe can easily be replaced in the field without recalibration



**8415-1** Bell (Surface)  
Probe Only.....\$99



**8415-2** Needle  
Probe Only .....\$99



**8415-3** Battery Cover.....\$19



**8415-4** Thermocouple  
Solid Simulator .....\$49

- The Solid Simulator simulates food product temperature in changing ambient conditions of any refrigerator, freezer or walk-in.
- The temperature of the Solid Simulator will display immediately when plugged into your Atkins 351 Series Digital Thermometer



**8410** Pocket Thermometer, 1" Dial.....\$9  
**0°F to 220°F**



**8411** Pocket Thermometer, Digital w/Hold.....\$29  
**-58°F to 302°F**



**8409** Cooler Thermometer, Metal.....\$9  
**-20°F to 80°F**

- Hangs or stands for easy installation
- HACCP Safe Zones



**8409-1** Cooler Thermometer, Plastic.....\$4  
**-40°F to 120°F**

- Space saving design
- HACCP Safe Zones



**8416** Electronic Timer / Clock / Stopwatch.....\$29

- Counts up or down
- Memory recall
- Easel stand, wire hanger, clip-on or magnet mount



**8419** Microwave Wattage Tester.....\$115



**8418** Digital Portion Scale.....\$55

- Displays in Ounces, Pounds + Ounces, or Grams (Graduation 0.05 ounce)
- Automatic Shut-Off
- 2 AA batteries included
- 11 Lb. Capacity



**8417** Mechanical Portion Scale.....\$49

- Contoured stainless steel platform holds bagged items: fries, tacos, shrimp
- Easy to read dial
- 16oz. Capacity (Graduation 0.25 ounce)
- Compact, space-saving design

## TONGS



6" Plastic ..... \$2.75

**8420-BK** Black

**8420-R** Red

**8420-G** Green



9" Plastic ..... \$3.75

**8422-B** Blue

**8422-R** Red

**8422-G** Green



**8423-R**  
12" Plastic, Red ..... \$6



**8424**  
9" Steel Lift N Grip ..... \$11

**8425**  
12" Steel Lift N Grip ..... \$13



**9009**  
9" Steel Scalloped ..... \$11

**9012**  
12" Steel Scalloped ..... \$10



9" Metal with Plastic Coated Handle ..... \$13.50

**9009-BK** Black

**9009-B** Blue

**9009-R** Red

**9009-G** Green

**9009-Y** Yellow

**9050-BK**  
Refillable Grease Pencils,  
Black, Box of 12 ..... \$14



**9051-BK**  
Pencil Refills, Black,  
Box of 72 ..... \$9



**8426-BK** Black Solid  
Spoon, 1/4 oz. .... **\$3**



**8427-G** Green Solid  
Spoon, 1/2 oz. .... **\$3**



**8427-T** Tan Solid  
Spoon, 1/2 oz. .... **\$3**



**8428-BR** Brown Solid  
Spoon, 3/4 oz. ... **\$3.50**



**8428-R** Red Solid  
Spoon, 3/4 oz. ... **\$3.50**



**8428-C** Clear Solid  
Spoon, 3/4 oz. ... **\$3.50**



**8429-BR** Brown Slotted  
Spoon, 3/4 oz. ... **\$3.50**



**9008** Red Portion  
Cup, 2 oz. .... **\$7.75**



**9003** Green Dishers,  
3-1/4 oz., #12. .... **\$9**



**9004** Yellow Dishers,  
2 oz., #20. .... **\$9**



**8551**  
Tomato Core-It. **\$3.50**

## STORE N' POUR



**8482**  
Bottle, 1 Quart... **\$4.50**



**8484-KIT**  
Necks, Assorted Kit .... **12 pack \$44**



**8483-KIT**  
Lids, Assorted Kit.... **12 pack \$29**



Lid (Limited Stock) ..... each **\$3**

Neck (Limited Stock) ..... each **\$4**  
**8484-G** Green    **8484-W** White

**8483-O** Orange    **8483-G** Green    **8483-W** White    **8483-BK** Black



**8471**  
Lettuce Knife,  
Green Plastic.....\$5



**8472**  
Lettuce Knife,  
Green Handle .....\$28



**8433-W**  
10" Scalloped Knife,  
White Handle .....\$14



**8433-BK**  
10" Scalloped Knife,  
Black Handle.....\$14



**8470-G**  
Saf-T-Grip Cutting Board,  
12" x 18" Green.....\$25



**8470-W**  
Saf-T-Grip Cutting Board,  
12" x 18" White.....\$25



**8443**  
Saf-T- Grip Cutting Board,  
6" x 9" White .....\$9



**8442**  
Chicken Cutter/  
Scoop.....\$18



**9005**  
Wire Whisk, 12".....\$6



**8434**  
Spatula/Sandwich Spreader,  
Plastic.....\$2



**8441**  
Amber Spatula.....\$7



**8446**  
Brown Salad Crock with  
Clear Lid, 1.2 qt. ....\$10



**8444**  
Clear Powdered Sugar  
Shaker with Top.....\$6



## ACCUSALT SHAKER



**8440** AccuSalt Shaker with  
6.5 g Gray Insert Cover..... **\$59**



**8440-3**  
Insert Container ..... **\$12**



**8439** AccuSalt Shaker with  
3.7 g Black Insert Cover ..... **\$59**



**8440-1**  
Amber End Cap..... **\$12**



**8440-4**  
Body Only ..... **\$34**



**8439-1**  
Black End Cap..... **\$16**



**8440-2**  
Gray Insert Cover, 6.5 g.... **\$12**



**8439-2**  
Black Insert Cover, 3.7 g ..... **\$11**

## ACCUTASTE™ SEASONING DISPENSER



**9022**  
AccuTaste™ Seasoning Dispenser, .35cc Gray Unit ..... **\$53**

- Patented design provides accurate, repeatable and functional dispensing of a premeasured dose
- Hinged lid allows for easy refill
- Designed for easy cleaning without disassembly



**9020-1**  
Lid Only ..... **\$6**



**9020-2**  
Body Subassembly ..... **\$31**



**9022-1** Gray Base  
Subassembly, .35cc..... **\$21**



**9020-3**  
Pin Only ..... **\$2.50**



**9020-4**  
Spring Only ..... **\$8**



**9020-5**  
Thumbscrew Only ..... **\$2**

## SQUEEZE BOTTLES

**8436** Clear Squeeze Bottle with Clear Cap, 12 oz. .... \$1.75

**9007** Clear Squeeze Bottle with Clear Cap, 24 oz. .... \$4.00



**8435-C**  
Clear Cap Only  
(small opening)....\$**.75**



**8435-B**  
Blue Cap Only  
(large opening) ...\$**.75**



**8435-G**  
Green Cap Only  
(large opening) . \$**1.00**

**8460-S** FIFO Bottle with Green (Small) Valve Cap, 12oz ..... \$**2.50**

**8460-L** FIFO Bottle with Blue (Large) Valve Cap, 12oz..... \$**2.50**



**8464**  
White End/Label  
Cap Only .....\$**1.00**



**8465-S**  
Green (Small) Valve  
Cap Only .....\$**1.50**



**8465-L**  
Blue (Large)Valve  
Cap Only .....\$**1.50**

**8460-R** Squeeze Bottle with Red Dispensing and End Caps, 12oz ..... \$**2.50**



**8464-R**  
Red End  
Cap Only .....\$**1.00**



**8465-R**  
Red Dispensing  
Cap Only .....\$**1.50**

## KETCHUP DISPENSER PARTS



**8520** (83910)  
Server Ketchup Pump  
w/Locking Lid ..... \$**275**



**8522** (84031)  
7 Quart Insert/Base for #8520  
Server Ketchup Pump..... \$**49**



**8521** (82533)  
Spare Parts Kit for #8520  
Server Ketchup Pump.. \$**18**



**8523** (82016)  
Spring for #8520 Server  
Ketchup Pump ..... \$**3**



**8480** Iced Coffee Mix Pitcher,  
1/2 Gallon .....**\$8.50**



**8481**  
Pitcher, 1 Gallon,  
with Lid..... **\$11**



**8473**  
Syrup Bottle, 32 oz.....**\$2**



White Pump  
for #8473  
Syrup Bottle

**8474-W** 1 oz..... **\$3.50**  
**8475-W** 1/2 oz... **\$3.50**



**8449**  
Stainless Steel Shake Cup..**\$6**



**8491**  
Shake Mix Cup.....**\$14**



**8492**  
Shake Mix Cup Inserts.....**\$11**



**9014**  
Coffee Carafe, 1/2 gallon,  
with Black Lid ..... **\$45**



**9014-1**  
Black Lid for 1/2 gallon  
Carafe..... **\$14**



**9014-2**  
Orange Lid for 1/2 gallon  
Carafe.....**\$14**



**5950**  
Funnel Assembly,  
Coffee..... **\$89**



**5951**  
Funnel Assembly,  
Tea..... **\$21**



**5952**  
Spray Head, White Plastic,  
7 Hole ..... **\$3**

## ICEZONE®-X SANITATION SYSTEM



**9030**  
IceZone X-30 ..... **\$395**

**9030-B**  
Replacement UV Bulb .... **\$85**

- Keeps ice machines, ice bins, and beverage dispensers clean
- Prevents slime and mold
- Reduces bacteria, yeast and other microorganisms
- Reduces equipment cleanings and associated costs
- The only NSF certified sanitation
- Maintenance free - requires a simple annual UV lamp replacement
- Approved by all major ice machine manufacturers



*Sample installation*

NOTE: There are several mounting options



**8450**  
Saf-T-Ice® Tote, 6 Gallon ..... **\$65**

Use dedicated ice-only containers and utensils to keep ice protected, sanitary and your customers safe.

## SAF-T-SCOOP® &amp; GUARDIAN SYSTEM™



**12-16 ounce**

**For Beverage Station:**

**8452**  
Guardian System™  
(includes Scoop, Holder &  
Mounting Tools) ..... **\$65**

**8452-1**  
Replacement Scoop only .. **\$29**



**64-86 ounce**

**For Ice Machines:**

**8453**  
Guardian System™  
(includes Scoop, Holder &  
Mounting Tools) ..... **\$105**

**8453-1**  
Replacement Scoop only .. **\$39**



**8430**  
Ice/Shortening Scoop,  
Metal, 58 oz.  
(14-1/2" length) ... **\$25**



**8431**  
Ice Scoop, Plastic, 12 oz.  
(11-1/2" length) ..... **\$8**



**8432**  
Shortening Ladle,  
32 oz. (19" length) ... **\$25**



**BRUSH KITS**



**TUNE-UP KITS**



**BLADES**

Model #	DMI #	OEM #	Description	Price
<b>Taylor 490</b>	<b>5010</b>	<b>39465X</b>	4-Piece Brush Kit	<b>\$40</b>
	<b>5021</b>	<b>48398X</b>	Tune Up Kit	<b>\$19</b>
	<b>5032</b>	<b>84950</b>	Plastic Blade, 3 Holes, ea.	<b>\$17</b>

<b>Taylor 632</b>	<b>5010</b>	<b>39465X</b>	4-Piece Brush Kit	<b>\$40</b>
	<b>5025</b>	<b>33351X</b>	Shake Side Tune Up Kit	<b>\$18</b>
	<b>5026</b>	<b>49463-11X</b>	Soft Serve Side Tune Up Kit	<b>\$26</b>
	<b>5032</b>	<b>84950</b>	Shake Side Blade, 3 Holes, ea.	<b>\$17</b>
	<b>5034</b>	<b>35174</b>	Soft Serve Side Blade, ea.	<b>\$12</b>

<b>Taylor C707</b>	<b>5012</b>	<b>44127X</b>	9-Piece Brush Kit	<b>\$66</b>
	<b>5027</b>	<b>4946358X</b>	Tune Up Kit	<b>\$26</b>
	<b>5034</b>	<b>35174</b>	Soft Serve Blade, ea.	<b>\$12</b>

<b>Taylor C709</b>	<b>5012</b>	<b>44127X</b>	9-Piece Brush Kit	<b>\$66</b>
	<b>5028</b>	<b>49463-92</b>	Tune Up Kit	<b>\$39</b>
	<b>5034</b>	<b>35174</b>	Soft Serve Blade, ea.	<b>\$12</b>



**5000**  
Lubricant, Non-Heat Treat, 4 oz. ... **\$5**  
(445, 490, 632, C707)



**5001**  
Lubricant, Heat Treat, 4 oz. .... **\$8**  
(C709)



**8250-1A**  
Carbon Brush for  
Motor, 1/4" x 1/4" ..... **\$ 6 ea.**



**5036-L**  
Stud Nut Top, Long ..... **\$26**  
(C707, C709)



**5036-S**  
Stud Nut Bottom, Short ..... **\$26**  
(C707, C709)



**5037**  
Stud Nut ..... **\$21**  
(632)

# FOOD PANS



Pan



Flat Lid



Lid w/Handle



Drain Rack

## Clear Pans - For Cold Food (-40°F to +210°F)

	Part #	Description	Price
<b>FULL SIZE</b> 20-7/8" x 12-3/4"	8751-2	Pan, 2-1/2" Deep	\$14.00
	8751-6	Pan, 6" Deep	\$23.00
	8751-HL	Pan Lid w/Handle	\$15.00
	8751-NL	Pan Lid w/Handle & Notch	\$16.00
	8751-1	Drain Rack	\$14.00
<b>1/2 SIZE</b> 10-7/16" x 12-3/4"	8752-2	Pan, 2-1/2" Deep	\$8.50
	8752-4	Pan, 4" Deep	\$10.00
	8752-6	Pan, 6" Deep	\$13.00
	8752-FL	Pan Lid - Flat	\$7.50
	8752-HL	Pan Lid w/Handle	\$7.50
	8752-1	Drain Rack	\$6.25
<b>1/3 SIZE</b> 6-15/16" x 12-3/4"	8753-2	Pan, 2-1/2" Deep	\$6.50
	8753-4	Pan, 4" Deep	\$9.00
	8753-6	Pan, 6" Deep	\$9.50
	8753-FL	Pan Lid - Flat	\$5.00
	8753-HL	Pan Lid w/Handle	\$5.00
	8753-1	Drain Rack	\$5.00
<b>1/6 SIZE</b> 6-3/8" x 6-15/16"	8756-2	Pan, 2-1/2" Deep	\$4.50
	8756-4	Pan, 4" Deep	\$5.00
	8756-6	Pan, 6" Deep	\$7.00
	8756-FL	Pan Lid - Flat	\$3.75
	8756-HL	Pan Lid w/Handle	\$4.25
	8756-NL	Pan Lid w/Handle & Notch	\$4.25
	8756-1	Drain Rack	\$2.25
	<b>1/9 SIZE</b> 4-1/4" x 6-15/16"	8759-4	Pan, 4" Deep
8759-FL		Pan Lid - Flat	\$4.00
8759-NL		Pan Lid - Flat w/Notch	\$4.00
8759-1		Drain Rack	\$2.00

### Commonly Ordered Clear Food Pans:

#### 8752-2

1/2 Size, 2-1/2" Deep:  
Tomatoes

#### 8752-4

1/2 Size, 4" Deep:  
Lettuce

#### 8753-4

1/3 Size, 4" Deep:  
Pickles / Onions

#### 8756-4

1/6 Size, 4" Deep:  
Red Onions / Cheese



Pan



Lid w/Handle



Lid w/Handle & Notch



Drain Rack

## Amber Pans - For Hot Food (-40°F to +300°F)

	Part #	Description	Price
<b>FULL SIZE</b> 20-7/8" x 12-3/4"	8741-6	Pan, 6" Deep	<b>\$69.00</b>
	8741-HL	Pan Lid w/Handle	<b>\$49.00</b>
<b>1/2 SIZE</b> 10-7/16" x 12-3/4"	8742-2	Pan, 2-1/2" Deep	<b>\$22.00</b>
	8742-6	Pan 6" Deep	<b>\$38.00</b>
	8742-HL	Pan Lid w/Handle	<b>\$23.00</b>
	8742-1	Drain Rack	<b>\$16.00</b>
<b>1/3 SIZE</b> 6-15/16" x 12-3/4"	8743-2	Pan, 2-1/2" Deep	<b>\$19.00</b>
	8743-4	Pan, 4" Deep	<b>\$24.00</b>
	8743-6	Pan, 6" Deep	<b>\$33.00</b>
	8743-HL	Pan Lid w/Handle	<b>\$15.00</b>
	8743-NL	Pan Lid w/Handle & Notch	<b>\$15.00</b>
	8743-1	Drain Rack	<b>\$9.00</b>
<b>1/4 SIZE</b> 6-3/8" x 10-7/16"	8744-4	Pan, 4" Deep	<b>\$21.00</b>
	8744-6	Pan, 6" Deep	<b>\$26.00</b>
	8744-HL	Pan Lid w/Handle	<b>\$11.00</b>
	8744-1	Drain Rack	<b>\$10.00</b>
<b>1/6 SIZE</b> 6-3/8" x 6-15/16"	8746-2	Pan, 2-1/2" Deep	<b>\$13.50</b>
	8746-4	Pan, 4" Deep	<b>\$16.50</b>
	8746-6	Pan, 6" Deep	<b>\$19.00</b>
	8746-HL	Pan Lid w/Handle	<b>\$10.00</b>
	8746-NL	Pan Lid w/Handle & Notch	<b>\$10.00</b>
	8746-1	Drain Rack	<b>\$5.50</b>
<b>1/9 SIZE</b> 4-1/4" x 6-15/16"	8749-2	Pan, 2-1/2" Deep	<b>\$10.00</b>
	8749-FL	Pan Lid - Flat	<b>\$7.00</b>

# FOOD PANS



Pan



Lid w/Handle



Lid w/Handle &amp; Notch



Drain Rack

## Stainless Steel Pans

	Part#	Description	Price
<b>1/2 SIZE</b> 10.4" x 12.8"	8762-2	Pan, 2-1/2" Deep	\$15.00
	8762-4	Pan, 4" Deep	\$18.00
	8762-6	Pan, 6" Deep	\$24.00
	8762-HL	Pan Lid w/Handle	\$11.00
	8762-1	Drain Rack	\$22.00
<b>1/3 SIZE</b> 6.9" x 12.8"	8763-4	Pan, 4" Deep	\$16.00
	8763-6	Pan, 6" Deep	\$24.00
	8763-HL	Pan Lid w/Handle	\$10.00
	8763-NL	Pan Lid w/Handle & Notch	\$10.00
<b>8704</b> 1/3 Size Wire Mesh Drain Rack .....		<b>\$4.75</b>	
<b>8707</b> 1/3 Size Stainless Steel Drain Rack .....		<b>\$10.00</b>	
<b>1/6 SIZE</b> 6.4" x 7.0"	8766-4	Pan, 4" Deep	\$13.00
	8766-6	Pan, 6" Deep	\$16.00
	8766-HL	Pan Lid w/Handle	\$9.00
	8766-NL	Pan Lid w/Handle & Notch	\$9.00
	8766-1	Drain Rack	\$15.50
<b>1/9 SIZE</b> 4.3" x 6.9"	8769-4	Pan, 4" Deep	\$12.00
	8769-NL	Pan Lid w/Handle & Notch	\$8.00





**8736-4**  
1/6 Size Pan, 4" Deep, Black **\$15.50**  
(6-3/8" x 6-15/16") (-40°F to +375°F)



**8737**  
Coldmaster Whipped Cream  
Can Chiller, Black..... **\$55**



**8738**  
Coldmaster Insulated Food  
Pan, Black..... **\$49**



**8446**  
Brown Salad Crock with  
Clear Lid, 1.2qt. .... **\$9**



**8495**  
1/2 Size Aluminum Baking Pan,  
12-7/8" X 17-3/4" ..... **\$10**



**8496**  
1/2 Size Wire Pan Insert,  
11-7/8" X 16-3/8" ..... **\$26**



**8437**  
Bacon Microwave Tray,..2-pack **\$23**



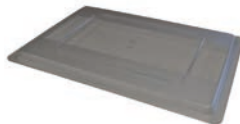
**8437-1**  
Microwave Shelf for  
Bacon Trays ..... **\$21**



**8438**  
Stackable Bacon Microwave  
Trays.....4-pack **\$59**



**8760**  
Lettuce Storage Box,  
18" X 26" X 6"..... **\$43**



**8760-FL**  
Lettuce Storage Box Lid,  
18" X 26" ..... **\$20**



**8760-C**  
Lettuce Storage Box  
Colander, 18" X 26" ..... **\$33**

# HOLDING UNITS

## FOR PRINCE CASTLE EHB24 & EHB34 UNITS



**6500 (540-1002S)**  
Lid..... \$29



**6501 (540-1158S)**  
Latch Kit..... \$108



**6502 (197-232S)**  
Feet..... 4-pk \$24



**6515 (78-184S)** On/Off Rocker Switch,  
Lighted..... \$23



**6505 (540-1215S)**  
Overlay and Display ..... \$123



**6514 (72-674S)**  
Power Cord..... \$141



**6503-M (510-098S)**  
Timer Bar, 8 CH, Main (Front)..... \$661



**6503-A (510-099S)**  
Timer Bar, 8 CH, Aux (Rear) ..... \$661



### HEATER ASSEMBLIES, 4 WIDE

**6512 (540-1222S)** Top Shelf, Upper ..... \$516

**6513 (540-1224S)** Top Shelf, Lower ..... \$497

**6510 (540-1226S)** Lower Shelf, Upper..... \$522

**6511 (540-1072S)** Lower Shelf, Base..... \$522

## FOR PRINCE CASTLE EHB24 UNITS



**6507 (95-1819S)**  
USB Connector ..... \$33



**6508 (95-2011S)**  
Ethernet Connector ..... \$91



**6506 (540-1232S)**  
Control Board..... \$832



**6509 (88-709-2-11S)**  
Speaker..... \$48



**8730**  
Holding Unit Cleaning Brush.....\$29

## FOR DUKE



**4400**  
Duke HS2 Lid.....\$36



**8706**  
Single Handle Pan, Amber.....each \$19.95



**8708**  
Single Handle Pan, Black.....each \$16.95



**8700**  
Dual Handle Pan, Amber.....6-pack \$119



**8735**  
Dual Handle Pan, Black.....4-pack \$66

### SPECIAL BULK DISCOUNT OFFER:

Place an order for Six 6-Packs of Amber Dual Handle Pans (36 pans) and **SAVE 10%!**  
(price per 6-pack drops from \$119 to \$107.10)

### SPECIAL BULK DISCOUNT OFFER:

Place an order for Six 4-Packs of Black Dual Handle Pans (24 pans) and **SAVE 5%!**  
(price per 4-pack drops from \$66 to \$62.70)

Visit us online at [www.dmi.parts.com](http://www.dmi.parts.com)  
and see how simple it is to search for  
parts and place orders 24/7



Presort Std  
U.S. Postage  
PAID  
Mentor, OH  
Permit No. 238



Now featuring the ability to check out as a guest,  
or create an account where you can:

- Check out faster
- Access your order history
- Save multiple shipping addresses  
(perfect for Maintenance Techs and  
District Managers)