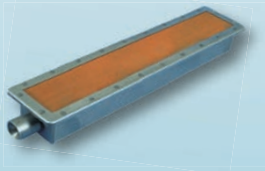




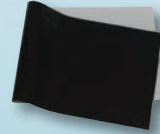
*Winter  
2023  
Catalog*

**MANUFACTURING, INC.**

**Your Reliable Source For Equipment Parts  
& Smallwares Since 1997**



**Broiler Parts**



**Broiler Sheets**



**Safety Apparel**



**Fryer Accessories**



**Vegetable Slicers**



**Smallwares & More**



**1-800-238-5384**  
**www.dmiparts.com**  
**Fax: 1-866-302-9397**



**JAN 2023**

# Table of Contents & Ordering Information

## BROILER PARTS - 800/900/1400 SERIES

Burners & Accessories .....	3
Broiler Sheets & Rolls .....	4
Ignition & Gas .....	5-7
Drive Motor & Electrical .....	8-10
Belt Drive & Bearings .....	11-12
Sheet Metal & Tools.....	13-16

## TOASTER SHEETS ..... 16

## BROILER PARTS - JF143 SERIES ..... 17-23

## SAFETY APPAREL ..... 24-26

## MAINTENANCE ..... 27-28

## FRYER ACCESSORIES & PARTS

Frymaster MJ45 & H50 .....	29-31
Fryer Tools & Accessories.....	32-36
Hood Filters.....	37
Gycor Filter Pads .....	38-39

## OTHER

Thermometers, Scales & Timers.....	40-41
Vegetable Slicers & Choppers .....	42-45
Smallwares .....	46-52
Bulbs .....	53
Food Pans .....	54-58
Holding Units .....	59

## Your Customer Service Team



Mark



Denise



Dennis



Julie



Celina



Alethea

- DMI is open from 8:15 am to 5:00 pm EST Mon-Fri. Your call will always be answered by a live customer service representative during business hours. Phone messages left after-hours will be returned on the next business day.
- Fax, Website and Email are available 24 hours/7 days a week.
- There is no minimum order.
- All prices are subject to change. Check [www.dmiparts.com](http://www.dmiparts.com) for the most current pricing.
- For ground shipment transit times, see map on page 15.
- Part numbers listed in green are for reference only.



**Toll Free Phone Orders: 800-238-5384**

**Toll Free Fax Orders: 866-302-9397**

**Local Phone Orders: 440-975-8645**

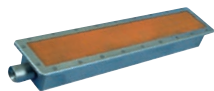
**Local Fax Orders: 440-975-0688**

**Website Orders: [www.dmiparts.com](http://www.dmiparts.com)**

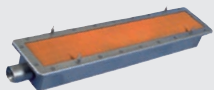
**Email Orders: [orders@dmiparts.com](mailto:orders@dmiparts.com)**

**From Mexico: 001-800-238-5384**

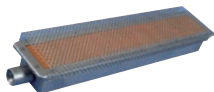
**BUY 3 AND SAVE!**



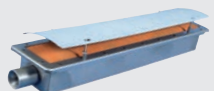
**8000**  
Upper Dispos-A-Burner™  
Without Reverberator



**8001**  
Lower Dispos-A-Burner™  
Without Shield



**8002**  
Upper Dispos-A-Burner™  
With Reverberator



**8003**  
Lower Dispos-A-Burner™  
With Delux Shield

TOTAL BURNERS ORDERED

1-2

**BEST VALUE**  
3 or more

**\$88.95** ea.

**\$83.95** ea.

**\$88.95** ea.

**\$83.95** ea.

**\$104.95** ea.

**\$99.95** ea.

**\$104.95** ea.

**\$99.95** ea.



*EASILY  
CONVERT  
YOUR UPPER  
BURNER INTO  
A LOWER  
BURNER!*

**8015** Spacer Kit (4) for  
Lower Burner ..... **\$5**



**8011**  
Reverberator with  
Safety Ends..... **\$29**

Reverberators and clips for Marshall Air  
broilers are also available. Please call for  
pricing.



**8014**  
Lower Burner  
Delux Shield..... **\$29**

DMI Shields are fabricated with bends  
at each of the four edges for extra  
strength and durability.

Keep your broiler  
clean with these brushes!

See page 16



**SHEETS****Black & Silver, 11-3/8" x 30"**

(for 800, 900 &amp; 1400 Series Flow-Through Models)

<b>8211</b>	1 sheet.....	<b>\$12</b>
<b>8211-06</b>	6 sheets.....	<b>\$57</b>
<b>8211-12</b>	12 sheets.....	<b>\$99</b>

**Tan, 12" x 30"**

(for 800, 900 &amp; 1400 Series Flow-Through Models)

<b>8210</b>	1 sheet.....	<b>\$12</b>
<b>8210-06</b>	6 sheets.....	<b>\$57</b>
<b>8210-12</b>	12 sheets.....	<b>\$99</b>

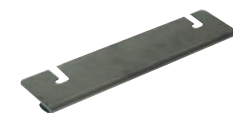
**Tan, 23" x 26"**

(for 900 and 1300 Series Self-Return Models)

<b>8213</b>	1 sheet.....	<b>\$15</b>
<b>8213-06</b>	6 sheets.....	<b>\$72</b>

**ROLLS**

DMI's Rolls are **108 feet long**. This is the equivalent of 44 sheets for your 800, 900 or 1400 series Flow Through Broilers.

**Black & Silver, 12-1/4" x 108 ft.****8216-ROLL ..... \$359****Tan, 12" x 108 ft.****8210-ROLL ..... \$335****SAVE:****20%**on sheets in  
**6-packs****30%**on sheets in  
**12-packs****35%**by ordering  
**Rolls!****8304**

Universal Broiler

Sheet Clamp

(950, 980, 824B,

1424) ..... **\$22**

All broiler sheets and rolls are available via  
our convenient Autoship Program.

Never forget to order sheets again!

Call us at 1-800-238-5384 to learn more.

### REGULATORS AND REPLACEMENT SPRINGS

FOR MODELS:

824, 824A, 824B, 1424, 950



**8227 (2025-A)**  
3" Lo-Gas, Nat,  
1/2" NPT..... **\$49**

**8227-LP**  
8" Lo-Gas, LP,  
1/2" NPT..... **\$49**



**8227-1 (2025-01)**  
Gray Spring,  
Lo-Gas, Nat..... **\$2**

**8227-1LP (2032-A)**  
Blue Spring,  
Lo-Gas, LP..... **\$2**

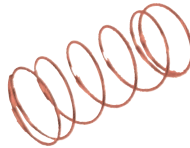
FOR MODELS:

824, 824A, 824B, 1424, 950



**8228 (2049-A)**  
5" Hi-Gas, Nat,  
1/2" NPT..... **\$65**

**8228-LP**  
11" Hi-Gas, LP,  
1/2" NPT..... **\$65**



**8228-1 (2049-A2)**  
Orange Spring,  
Hi-Gas, Nat ..... **\$2**

**8228-1LP (2049-A1)**  
Blue Spring,  
Hi-Gas, LP..... **\$2**

### PILOT PUSHBUTTON VALVES



**8225-2 (2122)**  
1/2" NPT (824B, 1424, 950). **\$161**



**8225-1 (2026)**  
3/8" NPT (824) ..... **\$145**



**8225-1A**  
Pushbutton only for #8225-1  
(824) ..... **\$69**

### SOLENOID VALVES



**8221 (2003)**  
High Gas, 1/2" NPT  
(824, 824A)  
..... **\$125**

**8222 (2085-A)**  
Main Gas, 3/4" NPT  
(824, 824A)  
..... **\$175**

**8222-1 (2003-B)**  
Main/High Gas, 1/2" NPT  
(824B, 1424, 950)  
..... **\$135**

# 6 BROILER PARTS – 800/900/1400 Series

## Ignition & Gas



### BURNER ORIFICES

- 8230 (2014)**  
Natural Gas #50 ..... \$4
- 8223 (2015)**  
Natural Gas #48 ..... \$3.50
- 8231 (2035)**  
LP Gas #57 ..... \$4




### PILOT ORIFICES

- 8232 (2018)**  
Natural Gas ..... \$9
- 8233 (2023)**  
LP Gas ..... \$9



### THERMOCOUPLES

- 8224 (2024)**  
24" ..... \$17
- 8224-48 (2101)**  
48" ..... \$21

PILOT CARRYOVER BURNERS		Units Required per Broiler	
		824 824A	824B 1424 950
	<b>8235</b> Standard (2011) ... <b>\$33</b>	7	2
	<b>8235-2</b> 2-Port (2179) ... <b>\$33</b>	-	2
	<b>8235-3D</b> 3-Port Down (2181) ... <b>\$33</b>	-	1
	<b>8235-3S</b> 3-Port Straight (2178) ... <b>\$33</b>	-	2



- 8327 (0081-07)**  
Pilot Chimney ..... \$135



#8220-A lens included

- 8220 (2001)**  
Gas Pressure Gauge 1/8" NPT ..... \$58
- 8220-A (2001-01)**  
Lens Only For Gas Pressure Gauge ..... \$3



- 8229** 5/16" Orifice Removal Driver ..... \$10



- 8230-B** Orifice Brush, Natural Gas #50 ..... \$5
- 8231-B** Orifice Brush, LP Gas #57 ..... \$5



**8247**  
Super Swivel,  
3/4" NPT ..... \$95



**GAS HOSE, 3/4" NPT**  
8245 36" Length ..... \$179  
8245-48 48" Length ..... \$199



**8246**  
Quick Disconnect,  
3/4" NPT ..... \$65



**8240-1 (4181-08)**  
Spark Igniter with  
(1) wire (824B, 1424,  
950) ..... \$15



**8240-2 (4181)**  
Spark Igniter with  
(2) wires (824, 824A)  
..... \$49



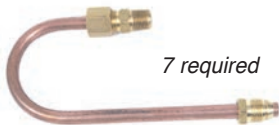
**8241 (4182)**  
Electrode, Igniter  
(1 per Pilot) ..... \$8



**8242 (4183)**  
Electrode Mounting  
Bracket..... \$6

### PILOT TUBES

For models 824B, 1424 & 950



**8239-1** Carryover ..... \$35



**8239-2** Upper ..... \$21



**8239-3** Lower ..... \$21

Thousands of loyal customers agree:  
DMI's convenient **AUTOSHIP PROGRAM** can't be beat!

- 1 Choose any quantity & combination of items found in our catalog. The most popular Autoship items are:

**Charbroiler Sheets, Toaster Sheets,  
Safety Apparel, Filter Pads**

- 2 Choose frequency of Autoship:  
**Monthly, Bi-Monthly, Quarterly, or Semi-Annually**

# BROILER PARTS – 800/900/1400 Series

## Drive Motor & Electrical



**8250-950 (4144-03)**  
Gear Motor w/ 10T and 15T Sprockets  
(824A, 824B, 1424, 950) ..... **\$599**



**8262-G (4094)**  
Motor Breaker Switch,  
Green Handle, 250V Max  
(824B, 1424, 950) ..... **\$45**






**8250-3 (4145-10)**  
Cap for Motor Brush Holder  
(824A, 824B, 1424, 950) ... **\$4 ea.**



**8251 (4137-03)**  
Plug for Gear Motor Cord,  
Quick Release (824) ..... **\$16**



**8252 (4137-02)**  
Receptacle for Gear Motor  
Plug (824)..... **\$25**

BROILER MODEL	CARBON MOTOR BRUSHES (actual sizes shown below)	MOTOR BRUSH HOLDERS
824	<b>8250-1A</b>  1/4" x 1/4" Square End ..... <b>\$6.00 ea.</b>	<b>8250-4A</b> ..... <b>\$15 ea.</b>
824	<b>8250-1B (4004-02)</b>  1/8" x 3/16" Rectangle End.. <b>\$8.00 ea.</b>	<b>8250-4B</b> ..... <b>\$10 ea.</b> <b>(4004-07)</b>
<b>824A, 824B, 1424, 950</b>	<b>8250-1C (4145-06)</b>  3/16" x 1/4" Rectangle End.. <b>\$5.50 ea.</b>	<b>8250-4C</b> ..... <b>\$10 ea.</b> <b>(4145-09)</b>

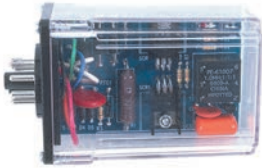
### MOTOR SPROCKETS



<b>8286-10 (6102)</b>	10T, 5/8" Bore (824).....	<b>\$29</b>
<b>8285-10 (6006)</b>	10T, 1/2" Bore (824A, 824B, 1424, 950).....	<b>\$29</b>
<b>8285-13 (6007)</b>	13T, 1/2" Bore .....	<b>\$29</b>
<b>8285-15 (13011)</b>	15T, 1/2" Bore (824A, 824B, 1424 with Bun Belt Speed Kit ONLY).....	<b>\$29</b>



## Drive Motor & Electrical

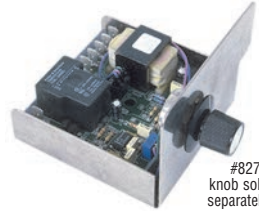


**8265 (4135)**  
SCR Controller, Can Type,  
115V ..... **\$149**



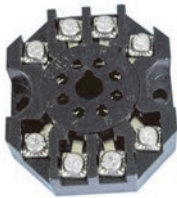
#8272 knob sold separately

**8270 (4071-P)**  
Auto Temp Control –  
ATC (824, 824A) ..... **\$94**



#8272  
knob sold  
separately

**8270-1 (4425)**  
Auto Temp Control –  
ATC / Bun Platen Control (824B,  
1424,  
950) ..... **\$189**

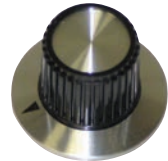


**8266 (4136)**  
Socket Base for SCR, 10 AMP –  
600V Max..... **\$9**



#8272  
knob sold  
separately

**8269 (4014)**  
Potentiometer, Speed  
Control ..... **\$75**



**8272 (4445)**  
Knob for potentiometer  
(speed control) & ATC ..... **\$6**



**8270-2 (5138-P)**  
Dial Plate for ATC ..... **\$14**



**8255 (4099)**  
Main On/Off Switch, Toggle,  
20 AMP – 250 V Max..... **\$249**



**8271 (4073)**  
Temperature Probe  
for ATC ..... **\$37**

# 10 BROILER PARTS – 800/900/1400 Series

## Drive Motor & Electrical



**8275 (4041)**  
 Contactor, 30 AMP – 120V  
 (824, 824A)..... \$45



**8275-1 (4041-1)**  
 Relay/Contactor (2 per broiler)  
 (824B, 1424, 950) ..... \$35



**8277-A (4125)**  
 Knob for Thermostat..... \$15

### FUSES



**8260 (4092)**  
 ABC-5  
 (824, 824A)..... \$2



**8260-1 (4602)**  
 SC-5  
 (824B, 1424, 950) ..... \$8

### FUSE HOLDERS



**8261 (4093)**  
 For ABC-5  
 (824, 824A)..... \$5



**8261-1 (4601)**  
 For SC-5  
 (824B, 1424, 950) ..... \$14



**8278 (4453)**  
 Knob, Platen Adjustment  
 (824B, 1424, 950) ..... \$29



### INDICATOR LIGHTS

**8274-A (4222)**  
 Amber ..... \$5

**8274-R (4100)**  
 Red ..... \$4



**8390-208 (4022)** 24" 208V Hairpin Heat Element..... \$269

**8390-230 (4031)** 24" 230V Hairpin Heat Element..... \$269

Please check the voltage of your old element before ordering.



**8277 (4020)**  
 Platen Control Thermostat  
 (824, 824A)..... \$99

#8277-A  
 knob sold  
 separately

### PTFE BEARINGS



- 8280 (6066)**  
1"W x 1-1/4"H 5/8" shaft...each \$8  
**8280-4**.....4-pk \$26
- 3734 (6049)\***  
1"W x 1-7/8"H 5/8" shaft..each \$43

\* May be needed for split chain broilers

### SPACER / SHOULDER BOLTS



- 8284-1 (4048)**  
3" length .....\$19  
(824B, 1424, 950)



- 8284-2 (0074-04)**  
Dual Rod Belt Support.....\$55  
(1424)

### PATTY / BUN CHAIN



- 8290-22 (6023)**  
22" Width.....\$79/ft.  
(824B, 1424, 950, 952, 1352)

- 8290-24 (6024)**  
24" Width.....\$85/ft.  
(824, 824A)

**NOTE:** For broiler models listed above, the typical length of a complete patty or bun chain is 6 feet.

- 8290-06 (6120)**  
6" Width.....\$78/ft.

- 8290-09 (6122)**  
9" Width.....\$78/ft.

- 8290-16 (6125)**  
16" Width.....\$88/ft.

- 8290-12 (6123)**  
12" Width.....\$78/ft.

- 8290-18 (6129)**  
18" Width.....\$88/ft.







- 8291**  
Pliers for Patty / Bun Chain ..... \$51



- 8289**  
Shaft Cleaning Tool..... \$6



- 8292-1 (6060)**  
Teflon Wear Strips (824B, 1424, 950) ..... 2-pack \$67

SPROCKETS AND DRIVE CHAIN	Part #	Description	Price	Broiler Model			
				824	824A/B, 1424, 950		
					Standard	w/ Bun Belt Speed Kit	
	Motor Sprocket	8286-10 (6102)	10T, 5/8" Bore	\$29	1		
		8285-10 (6006)	10T, 1/2" Bore	\$29		1	1
		8285-15 (13011)	15T, 1/2" Bore	\$29			1
	Bun Belt Sprocket	8286-15 (6037)	15T, 5/8" Bore	\$29	1	1	
		8286-10 (6102)	10T, 5/8" Bore	\$29			1
	Patty Belt Sprocket	8286-30 (6038)	30T, 5/8" Bore	\$45	1	1	1
	Drive Chain	8295 (6027)	#35 Drive Chain	\$4/ft.	3 feet	3 feet	1.5 feet & 4 feet



8295-1 (6048)  
#35 Chain Repair  
Link, Master .....\$3



8295-2 (6053)  
#35 Chain Repair Link,  
Offset .....\$4



8296  
#35 Chain  
Breaker Tool .....\$55

#### IDLER SHAFTS



8287-1 (6093)  
Patty (824, 824A) .....\$99

8287-2 (6056)  
Bun (824, 824A) .....\$99

8287-3 (6167)  
Patty/Bun (824B, 1424, 950) .....\$299

#### DRIVE SHAFTS



8288 (6054)  
(824, 824A) .....\$249

8288-1 (6168)  
(824B, 1424, 950) .....\$299



**8008 (8455)**  
Upper Burner Channel Strip  
(824, 824A, 824B, 1424, 950) .....\$19



**8322 (8425)**  
Burner Support Bracket  
(824B, 1424, 950) .....\$29



**8305-1 (9453)**  
Upper Burner Front Reflector w/Hole  
(824B, 1424, 950) .....\$49



**8308 (9005)**  
Lower Burner Rear Reflector  
(824, 824A, 824B, 1424, 950) .....\$39



**8306 (9041)**  
Upper Burner Rear Reflector  
(824) .....\$69



**8327 (0081-07)**  
Pilot Chimney  
(824B, 1424, 950) .....\$135



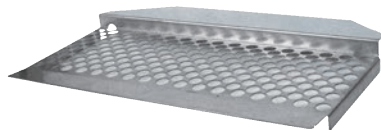
**8321 (9184)**  
Top Rear Awning Reflector  
(824A, 824B, 1424, 950 models  
without catalytic converter) .....\$175



**8323 (0067)**  
Burner Access Hole Cover  
(824A, 824B, 1424, 950) .....\$229



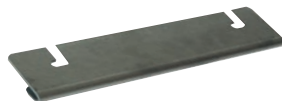
**8316-1 (9023-B)**  
Patty Discharge Pan  
(824B, 1424, 950) ..... **\$199**



**8317-1 (9131)**  
Insert for Patty Discharge Pan  
(824B, 1424, 950) ..... **\$109**



**8319-1 (9409)**  
Patty Shield  
(for use with patty belt extension) ..... **\$68**



**8304** Universal Broiler Sheet Clamp  
(824B, 1424, 950) ..... **\$22**



**8326-1 (9467)**  
Chain Guard Cover  
(824B, 1424, 950) ..... **\$159**



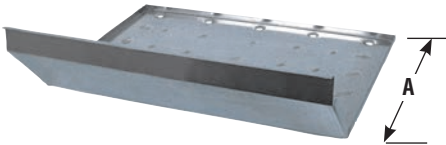
**8320-1 (9194)**  
Side Panel  
(824B, 1424, 950)..... **\$599**



**8313 (9077)**  
Crumb Pan  
(824, 824A, 824B, 1424, 950) ..... **\$109**



**8315 (9054)**  
Bun Discharge Chute ..... **\$175**



**8300-2 (9088)**  
Grease Pan  
(824B Ext, 1424 Ext, 950 Ext)  
A = 23" .....\$279



**8311-1 (9452)**  
Grease Collection Box  
(824B, 1424, 950) ..... \$35



**8310 (9062)**  
Grease Drain Chute  
(824) .....\$32



**8310-1 (9164)**  
Grease Drain Chute  
(824B, 1424, 950) .....\$21



**8324 (6166)**  
Meat Belt Scraper, Feed End  
(824B, 1424, 950) .....\$165

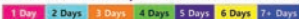


**8325-1 (6170)**  
Stripper Blade  
(824, 1424, 950) .....\$75

DMI Manufacturing, Inc.  
Cleveland, OH



When will your FedEx Ground shipment be scheduled for delivery?



**NORMAL  
DELIVERY  
SCHEDULE  
IN DAYS**

(Next Day and  
2nd Day Delivery  
Also Available)



My team is dedicated to getting your orders shipped immediately so that you can keep your restaurants running smoothly.

-Jeremy, Warehouse Manager

# 16 BROILER PARTS – 800/900/1400 Series

## Tools



**8357**  
Cleaning  
Brush, Soft  
Nylon (for  
Burner Screen)..... **\$13**



**8358**  
Cleaning  
Brush, Hard  
Nylon  
(for Burner Tube)..... **\$17**



**8359**  
Cleaning  
Brush,  
Hard Nylon  
(for Shields/Rod Belts) ..... **\$11**



**8229**  
5/16" Orifice Removal Driver. **\$10**



**8289**  
Shaft Cleaning Tool..... **\$6**



**8291**  
Pliers for Patty / Bun Chain ... **\$51**



**8572**  
Magnetic Tip Screwdriver,  
Phillips Head..... **\$4**



**8375**  
5" Caster with Brake  
(for broiler stand) ..... **\$44**

## TOASTER SHEETS

### PRINCE CASTLE 197/297 SERIES



#### TOASTER SHEET (16-1/2" x 20")

**8219**..... Each **\$12**  
**8219-06** ..... 6 Pack **\$57**  
**8219-12** ..... 12 Pack **\$99**  
**8219-Roll**..... 108 ft. continuous roll **\$440**

### PRINCE CASTLE CTD/CTDE



#### CTD TOASTER SHEET (6-1/2" x 26")

**6850**..... Each **\$14**  
**6850-06** ..... 6 Pack **\$67**

#### CTDE TOASTER SHEET (12" x 26")

**6852**..... Each **\$20**  
**6852-06** ..... 6 Pack **\$96**



## AIR BOX & BURNER



**3006 (20709)**  
Air Box, Front 21.38".....\$949



**3005 (20621)**  
Air Box, Rear 21.38".....\$949



**3007 (21214)**  
Flex Connector, 3/4" x 24" ....\$189



**3008 (22937)**  
Double Full Burner, 1" x 26.19" .....\$559



**3000 (18447)**  
High Pressure Blower .....\$835



**3001 (19764)**  
Heater Hose, 3/4" ID x 2". \$10



**3002 (19763)**  
Hose Clamp, #12 ..... \$4



### AIR BLOWER RESTRICTOR

**3003 (20903)** 1/4" Bore (CJ).....\$14  
**3004 (22367)** 3/8" Bore (H) .....\$26

## SHEETS & TOOLS



**BROILER SHEET, BLACK/SILVER**  
(11-3/8"x 23")  
**8204**..... Each \$10  
**8204-06** ..... 6-pack \$48  
**8204-12** *Best Value* 12-pack \$84



**8291**  
Pliers for Patty/Bun Chain..... \$51



**8296**  
#35 Chain Breaker Tool .....\$55



**3106 (25332)**  
Combination Wrench Tool.... \$46







**3107 (25333)**  
Shaft Cleaning Tool ..... \$34



**3108 (23307)**  
Cleaning Brush..... \$24

**GAS & IGNITION**

	Nat Gas	LP Gas
 Upper Burner Orifice	3009 (18152) #52 (CJ).....\$18 3014 (18148) #48 ( H, CJ without feeder).....\$19	3016 (18163) #63 (CJ).....\$18 3029 (18156) #56 (H).....\$18
 Pilot Orifice	3010 (2182) #3225 (CJ upper, H upper & lower).....\$10 3011 (2047) #5232 (CJ lower)..\$12	3020 (2023) #4212 (CJ & H upper).....\$12 3019 (17276) #4214 (CJ & H lower).....\$12
 Lower Burner Orifice	3012 (2051) #46 (CJ).....\$10 3015 (2070-40) #40 ( H, CJ without feeder).....\$14	3021 (2065) #54 (CJ).....\$14 3023 (2053) #52 (H).....\$14
 Zip Tube Orifice	3013 (22930) #70 (CJ & H) .....\$41	3022 (23481) #78 (CJ & H) .....\$41



**3017 (5599)** Upper Burner Orifice Washer (LP Gas)...**\$0.25**



**3018 (24336)** Upper Burner Orifice Pipe Adapter (LP Gas) **\$3**



**3024 (20826)** Zip Tube, 8.44" Long..... **\$57**



**8235-2 (2179)**  
Pilot Carryover Burner,  
#J129DDA.....**\$33**



**3025 (2180)**  
Pilot Carryover Burner,  
#J1994MDA-2H .....**\$107**



**3028 (21316)** Modulating Gas Valve (CJ) ..... **\$699**



**3026 (10954)**  
Solenoid Valve,  
1/2" NPT, 24 VAC .....**\$219**



**8228 (2049-A)**  
Regulator, RV48,  
1/2" NPT, Nat Gas.....**\$65**



**3027 (12741)**  
Solenoid Valve, 1/2" NPT, 24VAC,  
1/4" Compression Fitting .. **\$262**



**3720 (10291)**  
Igniter .....**\$109**



**3718 (16921)**  
Ignition Module.....**\$347**



**3723 (25957 / 17185)**  
Flame Sensor, Slotted.....**\$73**

## CONVEYOR PATTY BELT



**Patty Rod Belt 22" Width**

- 3048-91 (6023)**  
57" length (CJ) ..... **\$379**
- 3048-123 (6023)** 77" length  
(H, CJ without feeder)..... **\$316**



- 3045 (18831)**  
Drive Shaft, Patty Belt..... **\$409**



- 3044 (21722)** Bearing, 5/8"  
Bore, Side Panel ..... **\$49**



- 3043 (6028)**  
Set Collar 5/8" Bore..... **\$12**



- 3104 (22163)** Stiffener / Scraper,  
Patty Belt, Front ..... **\$59**



- 3105 (22204)**  
Stripper Blade, Short, Patty Belt  
Discharge..... **\$217**



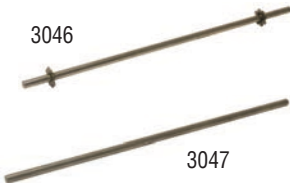
- 3040 (20786)** Gear Motor,  
DC, Brushless ..... **\$819**



- 3041 (178996)** Sprocket, 10T,  
Motor, 3/8" Bore..... **\$35**



- 3042 (6039)** Sprocket, 32T,  
Patty, 5/8 Bore Brushless ..... **\$71**



**Idler Shaft Patty Belt**

- 3046 (21227)** (CJ) ..... **\$257**
- 3047 (24175)** (H) ..... **\$53**



- 3734 (6049)** Bearing,  
1"W x 1-7/8"H, 5/8" Shaft... **\$43**



- 8295 (6027)** 2 Feet (23.25") req'd  
# 35 Drive Chain, per foot..... **\$4/ft**
- 8295-1 (6048)** #35 Chain  
Repair Link, Master..... **\$3**

## CONVEYOR BUN BELT



**3050 (22811)** Bearing, Bun Belt,  
Feed End, 3" x 1/2"..... **\$109**



**3058 (26304)**  
PTFE Wear Strip..... **\$95**



**3059 (26298)** Guide for PTFE  
Wear Strip..... **\$32**



**3052 (20864)** Wire Bun Belt,  
10.625" width, per foot  
(6.5ft. required)..... **\$126/ft.**



**3051 (21720)** Dual Drive Shaft,  
Bun Belt ..... **\$467**



## For Bun Belt Drive Shaft

**3055 (24171)**  
Coupler, 5/8"..... **\$79.00**

**3056 (24172)**  
Bolt, 3/8-16 x 4" ..... **\$3.00**

**3057 (5600)**  
Washer, 3/8"..... **\$0.25**



**3044 (21722)** Bearing, 5/8" Bore,  
Side Panel..... **\$49**



**3054 (20603)** Sprocket, 11T,  
Bun, 5/8" Bore ..... **\$66**



**3053 (21860)** Adjusting Arms  
Assy, Bun Belt..... **\$795**

## ELECTRICAL



**3718 (16921)**  
Ignition Module..... **\$347**



**3723 (25957 / 17185)**  
Flame Sensor, Slotted..... **\$73**



**3070 (17201)** Light,  
Ignition Lock-Out, LED ..... **\$8**



**3071 (4402)** Indicator Light,  
Green, 28V ..... **\$34**

*image not available*

**3073 (20721)** Bun Platen,  
208V/2400W..... **\$1,699**

## ELECTRICAL (Con't)



**3069 (4403-04)**  
ATC Probe, 19" ..... \$56



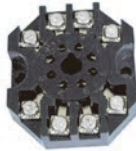
**3748 (16408)**  
Thermocouple / Temp. Probe  
11.63" ..... \$70



**3068 (18861)**  
Thermocouple Probe  
48" ..... \$62



**3750 (13727-B)**  
Motor Control, 8 Pin ..... \$599



**8266 (4136)**  
Socket Base, 8 Pin ..... \$9



**3744 (15480)**  
Main On/Off Switch ..... \$195



**3752 (13570-C)** Load Sensing  
Control, 11 pin ..... \$844



**3754 (13737)** Socket Base,  
11 pin ..... \$44



**3078 (25918)** Control, PID Temp,  
Gas ..... \$739



**3072 (13579)**  
Switch, Motor Reversing ..... \$26



**3074 (22929)** Transformer,  
115/230VAC x 18-24 VAC ..... \$239



**3075 (16034)** Control Transformer,  
115/230VAC, 24V ..... \$158



**3076 (12725)**  
Bridge Rectifier ..... \$32



**3077 (4418)** Relay,  
24V input, 30V-25A output ..... \$139

## SHEET METAL



**3102 (22840)**  
Hood, Chimney, Single..... **\$829**



**3103 (22991)**  
Heat Baffle, Upper.....**\$433**



**3092 (21201)** Heat Shield,  
Feeder / Frame.....**\$289**



**3093 (25801)**  
Grease Pan, Flat..... **\$349**



**3091 (20848)** Crumb Pan,  
Bun Conveyor ..... **\$565**



**3090 (9452)** Grease Box,  
12" x 10" x 4" ..... **\$129**



**3097 (21869)**  
Heat Shield..... **\$228**



**3099 (22179)**  
Sizzle Plate..... **\$829**



**3098 (21873)**  
Patty Catch Pan ..... **\$439**



**3096 (21868)**  
Grease Chute, Rear ..... **\$94**



**3095 (21865)**  
Bun Slide, Pivoting ..... **\$359**

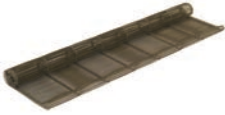


**3104 (22163)** Stiffener / Scraper,  
Front, 22" Patty Belt.....**\$59**



**3105 (22204)** Stripper Blade, Short,  
Discharge, 22" Patty Belt.....**\$217**

## FEEDER



**3120 (24879)** Feeder Wirebelt  
Assy. Complete..... **\$579**



**3121 (20882)** Sprocket, 24T,  
Wirebelt 3/8" Bore..... **\$34**



**3122 (19913)**  
Bushing, Flanged ..... **\$45**



**3123 (11194)**  
Coupler, Drive ..... **\$65**



**3124 (20884)** Drive Assembly  
with Clutch..... **\$859**



**3125 (15882)**  
Combo Clutch Assembly..... **\$559**



**8286-15 (6037)** Sprocket,  
15T, 5/8" Bore ..... **\$29**



**3130 (11608)**  
Clutch Knob, Black..... **\$28**



**3126 (14900)** Clutched,  
Sprocket Only ..... **\$409**



**3127 (10275)**  
Washer, Thrust ..... **\$5**



**3128 (14896)** Bearing,  
Shoulder Washer ..... **\$13**



**3129 (10627)**  
Bearing Clip ..... **\$3**



**8295 (60275)** 1 foot (10.5") req'd  
#35 Drive Chain, per foot ..... **\$4/ft**



**8295-1 (6048)** #35 Chain Repair  
Link, Master ..... **\$3**



**8295-2 (6053)** #35 Chain Repair  
Link, Offset ..... **\$4**

## OVEN MITTS



**8335**  
Tucker QuicKlean™ Oven Mitt,  
15" Length, 450°F.....**\$30 ea**



**8344**  
Tucker Puppet Mitt, Nomex® with  
VaporGuard™ and Kevlar Palm  
15" Length, 900°F.....**\$45 ea**



**8354**  
Oven Mitt, 17" Length..... **\$8 ea**

## BROILER MITTS



**8353**  
Tucker Three-Finger QuicKlean™  
Gloves, Poly Cotton with Kevlar  
Hand, 18" Length, 650°F...**\$98/pr.**



**8355**  
Broiler Mitts, Neoprene Coated,  
Heavy Duty Insulated,  
17" Length, 350°F..... **\$34/pr.**

## FRYER GLOVES



Tucker QuicKlean™ Fryer Gloves  
20" Length, 300°F.....**\$32/pr.**

**8330-M** Size Medium  
**8330-L** Size Large  
**8330-XL** Size X-Large



**8356**  
Fryer Gloves, Neoprene Coated,  
Heavy Duty Insulated,  
17" Length, 350°F.....**\$34/pr.**



**8356-31**  
Fryer Gloves, Neoprene Coated,  
Heavy Duty Insulated,  
21" Length, 350°F..... **\$49/pr.**



## CUT RESISTANT GLOVES



### SAFETY TIP

Remember to inspect your safety apparel on a regular basis and replace as needed to keep your employees safe!



Tucker Red Glove.....**\$21 ea**

White/Blue Glove.....**\$18 ea**

- 8405-S** Small
- 8405-M** Medium
- 8405-L** Large

- 8404-S** Small
- 8404-M** Medium
- 8404-L** Large



G-Tek Cut Resistant Gloves, Orange.....**\$21/pr**

- 10550-S** Small
- 10550-M** Medium

- Nitrile coated palm & fingertips for excellent grip
- Complies with FDA food handling requirements



Tucker Cut-Resistant Freezer Gloves.....**\$14/pr**

- 8406-M** Medium
- 8406-L** Large
- 8406-XL** X-Large

- Synthetic knit shell creates high level of flexibility & dexterity
- Palm coating withstands exposure from liquids
- Brush fleece lining provides thermal properties



Tucker Cut-Resistant Stocking Gloves.....**\$16/pr**

- 8407-M** Medium
- 8407-L** Large
- 8407-XL** X-Large

- Provides a good balance of comfort, dexterity & cut resistance
- Palm coating provides excellent grip & tactility

## SAFETY APPAREL



Search for parts  
and place  
orders online

**www.dmparts.com**



- Fast Reading (Approx. 1 second)
- Runs on 2 AAA Batteries (included)
- Memory for last 25 readings

**8413**  
Infrared Forehead Thermometer ..... **\$59**



**8333**  
Tucker QuicKlean™ Apron,  
36" ..... **\$42**



**8361** Apron,  
Heavy Duty PVC,  
35" x 45" ..... **\$19**



**8362** Face Shield (w/visor), w/  
Deluxe Adjustment ..... **\$28**

**8362-1** Replacement  
Visor Only, 8" x 15-1/2" ..... **\$10**



**8364**  
Tucker QuicKlean™  
ShinGuards™ ..... **\$55**



**10" Hi-Top Boots**  
**8363** Size Large ..... **\$54**  
**8363-XL** Size X-Large ..... **\$54**



**8403**  
Wall Mount for Vinyl PVC  
Gloves ..... **\$15**  
(Hardware included)

## CEILING TILE PROTECTOR



**Keeping your ceiling tiles clean has never been easier!**

- The Ceiling Tile Protector shown here is black for illustration purposes only. It is clear and nearly invisible.
- Fast and easy installation.
- Reduces ceiling maintenance costs.
- National Sanitation Foundation (NSF) tested.
- Fits all standard diffusers (24" x 24")

**8577** ..... each **\$35**

**8577-05** .....5-pack **\$149**

## SCOTCH-BRITE™ FRYER & KITCHEN CLEANING TOOL

**8373**

Starter Set (Includes 1 Tool, Each of 3 Interchangeable Cleaning Pads .....**\$55**

3 Powerful Positions



Acute Position  
POWER SCRUBBING



Extended Position  
LONGER REACH



Right Position  
HARD SPOTS

## INTERCHANGEABLE CLEANING PADS FOR #8373 TOOL

Can be used wet or dry at temperatures up to 350°F



**8373-1**

Gray Heavy Duty Pads..6-pk **\$14**



**8373-2**

Green Medium Duty Pads..6-pk **\$14**



**8373-3**

Blue Low Scratch Pads..6-pk **\$14**



**10507**  
Viper® Pro Multi-Purpose Safety  
Cutter, Hi-Vis Yellow..... **6-pk \$19**



**10508**  
Viper® Pro Bag Opener,  
Safety Orange ..... **6-pk \$16**



**10509**  
X-tra Safe® Disposable Utility  
Knife, Yellow ..... **6-pk \$25**



**8574**  
Pouchmate Pouch Opener ..... **\$4**



**8575**  
Bucket Opener, Plastic ..... **\$13**



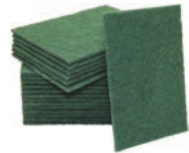
**8576**  
Safety Box Cutter ..... **\$4**



**8455**  
Red Sani-Pail, 6 Qt. .... **\$5.50**



**8456**  
Blue Sani-Pail, 6 Qt. .... **\$5.50**



**9013**  
Scouring Pad, Green, Medium Duty,  
6" x 9" ..... **Box of 20 \$19**



**8562** No Slip Magnetic  
Doorstop ..... **\$8**



**8564** Table Wobble  
Stopper ..... **6-pk \$5**

**DMI is proud to offer Frymaster replacement parts!**

**FOR FRYMASTER MJ45 AND H50 UNITS**



**6000 (806-4206)**  
 Temperature Probe  
 Assembly ..... **\$218**



**6001 (210-0681)**  
 Probe Guard..... **\$22**



**6002 (826-1177)**  
 Hi-Limit Thermostat..... **\$189**



**6003 (807-6084)**  
 Heat Relay, 12V ..... **\$39**



**6004 (806-3660)**  
 Sound Device High Output .. **\$48**



**6005 (807-2103)**  
 Drain Valve Switch..... **\$18**



**6006 (807-4978)**  
 Dual Voltage Transformer **\$110**



**6007 (826-3191)**  
 Filter Pump/Gasket Kit .... **\$509**



**6008 (826-1712)**  
 Filter Pump Motor..... **\$699**

FOR FRYMASTER H50 UNITS ONLY



**6100 (826-0981)**  
Igniter with Gasket, Nat.....\$148



**6101 (826-1072)**  
Universal Burner, Nat/LP...\$520



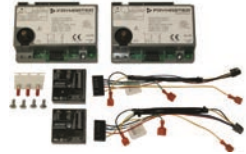
**6112 (826-0931)**  
Burner Insulation Kit  
for #6101.....\$146



**6105 (826-2024)**  
Ignition Cable.....\$54



**6114 (826-3668)**  
Full Vat Fenwall Ignition  
Module Conversion Kit.....\$399



**6116 (826-3669)**  
Duel Vat Fenwall Ignition  
Module Conversion Kit.....\$499



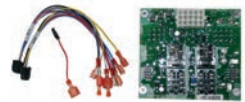
**GAS VALVES**

**6106 (826-1122)**  
Honeywell, Nat .....\$205

**6107 (826-1120)**  
Conversion Kit,  
RS to Honeywell, Nat.....\$273



**6108 (106-2994SP)**  
Blower Assembly .....\$363



**6109 (826-2264)**  
Interface Board .....\$306



**6110 (810-0403)**  
Burner Orifice, Nat, 0-4000 ft..\$29



**6111 (807-3843)**  
Fuse, 3 Amp, 250V .....\$10

## FOR FRYMASTER MJ45 UNITS ONLY



**6050 (806-0184)**  
Operating Thermostat .....\$399



**6051 (810-1873)**  
Thermopile with Push-on  
Terminal.....\$93



**6052 (810-0617)**  
Thermopile with  
Coaxial End .....\$139



**6054 (807-3294)**  
Gas Valve, Honeywell,  
Nat, 24V.....\$318



**6055 (807-1603)**  
Gas Valve, Honeywell, Nat,  
Millivolt .....\$318



**6053 (810-0426)**  
Pilot, Nat.....\$88



**6056 (826-1596)**  
Gas Valve Conversion Kit,  
RS to Honeywell, Nat.....\$429



**6057 (806-3548/826-2574)**  
Interface Board .....\$429

*Don't see the Frymaster parts you need?  
Call us at 1-800-238-5384 for pricing & availability of other items.*

# FRYER ACCESSORIES



## FRY BASKETS

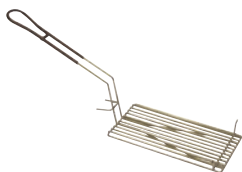
**8369** Green Handle  
12"L x 6"W x 5-3/8"H..\$29

**8387** Blue Handle  
13"L x 5-1/2"W x 5-1/2"H..\$27

## FRY BASKETS W/ LID & DIVIDERS

**8389** Yellow Handle, 5 slot  
12-1/2"L x 6-3/8"W x 3-1/2"H . \$27

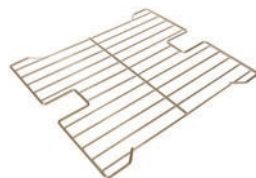
**8369-4** Blue Handle, 10 slot  
12-1/2"L x 6-1/8"W x 4"H..\$26



**8369-3** Fry Basket Submerger  
(for use with #8369) ..... \$21



**8369-1** Fry Basket Insert  
(for use with #8369 or #8387) \$38



**8388** Fry Basket Support Rack  
(fits Frymaster MJ45 & H50) ..... \$109

## SEDIMENT TRAYS

- Fits beneath your fry baskets to catch crumbs and sediment.
- Can be removed quickly and easily for cleaning.
- Helps to lengthen the life of your oil.



**8370**  
14"L x 12.5"W X 6.5"H \$85  
Fits Most Frymaster Gas Fryers



**8372**  
13.25"L x 11.75"W X 6.5"H \$99  
Fits Most OCF/GL Gas Fryers



**5201**  
Pitco Basket Support Rack, Twin  
13-1/2"L x 6"W.....\$155



**5202**  
Pitco Basket Support Rack, Full  
13-1/2"L x 13-1/2"W ..... \$155



**5203**  
Pitco Basket Support Rack  
13-1/2"L x 17-1/2"W ..... \$155



## SHORTENING SHUTTLE®



Shortening Shuttle® ..... **\$739**

- **STOPS HOT OIL BUCKET BURNS!**
- **SAVES 30-50%** on labor costs and lowers your liability exposure

DMI Part #	8368	8368-S
Model #	SS-611-T	SS-611-TL
Capacity	80 Lbs. / 10.5 Gal.	60 Lbs. / 9 Gal.
Min. Fryer Drain Hgt.	11.5 in.	9.9 in.
Max. Waste Cont. Hgt.	49.5 in.	49.5 in.
Overall Dimensions	12"W x 12"H x 58"L	12"W x 10"H x



**8368-1** Wall Hook.....**\$16**



**8368-2** Top Handle.....**\$31**

**8368-3** Wheel Handle .....**\$49**



**8368-4** Single Wheel .....**\$47**

*Manufactured by Worcester Industrial Products, Worcester, MA.*



**8247-1** Super Swivel,  
1" NPT .....**\$159**



**GAS HOSE, 1" NPT**  
**8244** 36" Length.....**\$185**  
**8244-48** 48" Length.....**\$209**



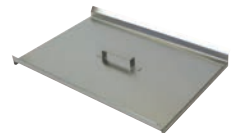
**8246-1** Quick Disconnect,  
1" NPT .....**\$79**



**8369-2** Universal  
Fry Basket Hanger.....**\$119**



**8378** Fryer Drain  
Extension Pipe ..... **\$65**



**8378-1** Vat Cover,  
Frymaster Gas.....**\$79**

## FRY BAGGING SCOOPS



**8371**  
Plastic, Dual Handle ..... \$19



**8371-1**  
Plastic, Right Hand ..... \$19

**8371-2**  
Plastic, Left Hand ..... \$19



**8371-DH**  
Metal, Dual Handle ..... \$19



**8371-RH**  
Metal, Right Hand ..... \$19

**8371-LH**  
Metal, Left Hand ..... \$19



**5634** Grate Comb for  
Forced Air Fry Station ..... \$10



**8371-OR**  
Onion Ring Scoop ..... \$30



**8379**  
Fry Waste Bucket ..... \$15

## ACCUSALT SHAKER



**8440** AccuSalt Shaker with  
6.5 g Gray Insert Cover ..... \$59



**8440-3**  
Insert Container ..... \$12



**8439** AccuSalt Shaker with  
3.7 g Black Insert Cover ..... \$59



**8440-1**  
Amber End Cap ..... \$12



**8440-4**  
Body Only ..... \$34



**8439-1**  
Black End Cap ..... \$16



**8440-2**  
Gray Insert Cover, 6.5 g .... \$12



**8439-2**  
Black Insert Cover, 3.7 g ..... \$11

Fryer Cleaning Scoop

**8374** Frymaster (23" length) ..... \$55

**5204** Pitco (19" length)..... \$49



Fryer Cleaning J-Rod

**8374-1** Frymaster (29" length) .....\$15

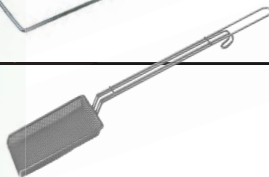
**5200** Pitco (21" length).....\$79



**8374-2**

Fryer Skimmer, Rectangular ..... \$19

(20" length, 4" width)



**8374-2A**

Fryer Skimmer, Square .....\$14

(19-1/2" length, 6-1/2" width)



**8374-3**

Fryer Brush, Right Angle.....\$12

(21" length)



**8374-4**

Fryer Brush, Straight.....\$12

(23" length)



**8430**

Ice/Shortening Scoop, 58 oz.....\$25

(14-1/2" length)



**8432**

Shortening Ladle, 32 oz.....\$25

(19" length)





**8367**  
Shortening Saver ..... **\$165**  
• Fits on top of standard 5 gal. pail  
• Keeps crumbs out of fryers/multipots



**8376**  
Shortening Test Kit ..... **\$16**  
**8376-D**  
Dropper Only ..... **\$6**



**5549**  
Vito® 50/80 Filters,  
Box of 100 ..... **\$219**



**5535**  
Plain Paper Filters, 16.5" x 25"  
Case of 100 ..... **\$59**



**5550**  
Plain Paper Envelopes w/ Center  
Hole through one side, 19" x 20.5"  
Case of 100 ..... **\$146**

**SCOTCH-BRITE™ FRYER & KITCHEN CLEANING TOOL**

**8373**  
Starter Set (Includes 1 Tool, Each of 3 Interchangeable Cleaning Pads ..... **\$55**  
3 Powerful Positions



Acute Position  
POWER SCRUBBING



Extended Position  
LONGER REACH



Right Position  
HARD SPOTS

**INTERCHANGEABLE CLEANING PADS FOR #8373 TOOL**

Can be used wet or dry at temperatures up to 350°F



**8373-1**  
Gray Heavy Duty Pads..6-pk **\$14**



**8373-2**  
Green Medium Duty Pads..6-pk **\$14**

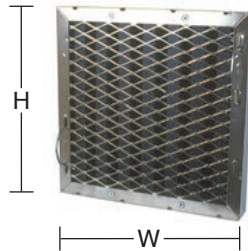


**8373-3**  
Blue Low Scratch Pads..6-pk **\$14**



## DELUX Teflon Coated Type I Hood Filters

- 94% Efficient at Grease Extraction
- Spark Arrestor Frame
- Bale Handles Included

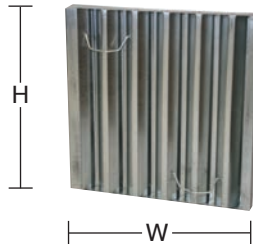


Part #	Trade Size H x W	Actual Dimensions H x W x D	Price
8380-T	10 x 16	9-1/2 x 15-1/2 x 1-7/8	\$169
8381-T	10 x 20	9-1/2 x 19-1/2 x 1-7/8	\$169
8382-T	16 x 16	15-1/2 x 15-1/2 x 1-7/8	\$181
8383-T	16 x 20	15-1/2 x 19-1/2 x 1-7/8	\$185



## ECONO Steel Hood Filters

- Unique "Frameless" Design Maximizes Capture Area
- Lightweight
- Bale Handles Included



Part #	Trade Size H x W	Actual Dimensions H x W x D	Price
8380-S	10 x 16	9-1/2 x 15-1/2 x 1-5/8	\$59
8381-S	10 x 20	9-1/2 x 19-1/2 x 1-5/8	\$59
8382-S	16 x 16	15-1/2 x 15-1/2 x 1-5/8	\$65
8383-S	16 x 20	15-1/2 x 19-1/2 x 1-5/8	\$71
8385-S	20 X 16	19-1/2 x 15-1/2 x 1-5/8	\$71
8384-S	20 x 20	19-1/2 x 19-1/2 x 1-5/8	\$75

### ORDERING TIPS

- Please order with the **Height (H)** dimension first and the **Width (W)** dimension second
- Filters should always be installed with the baffles running in the Vertical (top to bottom) position

- **LENGTHENS OIL LIFE** - Clarifies, brightens & freshens shortening more effectively than competitive products.
- **IMPROVES FOOD QUALITY** - Less oil absorbed into food.
- **SPECIAL INGREDIENT** - FRI-MOR™ filter powder (in the pad) chemically alters the oil to remove impurities.
- **CONVENIENT** - Compact 30-day packaging. Easy to store and easy to monitor frequency of shortening filtration.
- **SAVES MONEY** - Less add-back in fryers reduces excessive top-off with the more expensive oil.



See page 36 for  
Vito® and Plain  
Paper Filters.

ENVELOPES			
DMI# (Gycor #)	Dimensions	Description	Price per Case of <b>30</b>
<b>5506</b> (ESA-149)	16" x 16" 1.125" Center Hole (through one side)	Filter Screen Adapter	\$74
<b>5509</b> (ESA-126)	13.75" x 20.375" 1.50" Center Hole (through one side)	Filter Screen Adapter	\$73
<b>5516</b> (ESA-154)	11" x 19" 0.75" Side Hole (through both sides)	Filter Screen Adapter	\$66
<b>5520</b> (ESA-103)	16.75" x 22.5" 0.6875" Side Hole (through one side)	Filter Screen Adapter	\$95
<b>5525</b> (ESA-161)	17.5" x 21" 1.50" Side Hole (through one side)	Filter Screen Adapter	\$89
<b>5511</b> (ESA-124)	13" x 13" No Hole	F.A.S.T. Portable (No retrofit)	\$58
<b>5515</b> (CH-1630)	14" x 15" 0.875" Center Hole (through both sides)	F.A.S.T. Portable (retrofit w/center stand pipe)	\$51
<b>5507</b> (ESA-153)	11" x 20" 0.75" Center Hole (through both sides)	Low Boy (J50S) Portable	\$67
<b>5522</b> (ESA-169)	11" x 20" 1.5" Center Hole (through one side)	Low Boy (J50SA), Frontline Portable	\$67
<b>5508</b> (ESA-129)	19" x 20.5" 1.375" Center Hole (through one side)	Pitco Built-In	\$93
<b>5527</b> (ESA-105)	14.25" x 22.5" 1.5" Off-Center Hole (through one side)	Henny Penny Built-In	\$81
<b>5528</b> (ESA-156)	23" x 32" 1.5" Side Hole (through one side)	UltraFryer	\$131



## AUTOSHIP PROGRAM

All Gycor products can be set up for DMI's convenient Autoship Program. Call 1-800-238-5384 today. Never worry about forgetting to order again!



### SHEETS

DMI# (Gycor#)	Dimensions	Description	Price Per Case of 30
<b>5500</b> (SSA-140)	14.5" x 21.75"	<b>Frymaster</b> FP3 & Pro Series Built-In	<b>\$45</b>
<b>5501</b> (SSA-109)	12.5" x 21.5"	<b>Frymaster</b> FP1, FP2, FM2 Built-In	<b>\$41</b>
<b>5503</b> (SSA-108)	12.5" x 18"	<b>Frymaster</b> FM1 Built-In	<b>\$37</b>
<b>5517</b> (SSA-115)	14.1875" x 29.1875"	<b>Frymaster</b> Built-In	<b>\$44</b>
<b>5524</b> (SSA-1504)	11.25" x 19.125" Thicker Grade *	<b>Frymaster OCF</b> <b>Pitco</b> ROV / SSHLV	<b>\$46</b>
<b>5505</b> (SSA-117)	16.375" x 24.375"	<b>Dean / Frymaster</b> Built-In	<b>\$52</b>
<b>5510</b> (SSA-116)	16.375" x 18.375"	<b>Dean / Frymaster</b> Portable	<b>\$43</b>
<b>5526</b> (ESA-1164)	16.375" x 18.375" Thicker Grade *	<b>Dean / Frymaster</b> Portable	<b>\$58</b>
<b>5504</b> (SSA-125)	9.625" x 15"	<b>Filtercorp Adapter</b> F-16	<b>\$46</b>
<b>5504-1</b> (G-100)		Gasket for use with F-16 Pads	<b>ea. \$24</b>
<b>5523</b> (SSA-170)	12.5" x 15"	<b>Filtercorp Adapter</b> F-40	<b>\$49</b>
<b>5523-1</b> (G-200)		Gasket for use with F-40 Pads	<b>ea. \$30</b>
<b>5502</b> (SSA-150)	11.25" x 19.125"	<b>Pitco</b> SGH50 & AG14S Built-In	<b>\$37</b>
<b>5512</b> (SSA-113)	13.5" x 24"	<b>Pitco</b> Portable P14	<b>\$44</b>
<b>5519</b> (SSA-135)	17.5" x 28"	<b>Pitco / Dar Pro</b> Portable P18, P24, P34	<b>\$57</b>
<b>5518</b> (SSA-168)	18" x 25"	<b>RTI System</b>	<b>\$53</b>

\* Thicker Grade Pads are made from a heavier material for a faster flow rate.

### CIRCLES

<b>5513</b> (CSA-134)	21.875" Diam. No Hole	<b>Renu</b> Portable	<b>\$61</b>
<b>5514</b> (CSA-120)	21.875" Diam. 1.625" Center Hole	<b>Prince Castle</b> Portable	<b>\$61</b>



- Fast Reading (Approx. 1 second)
- Runs on 2 AAA Batteries (included)
- Memory for last 25 readings

**8413**  
Infrared Forehead Thermometer ..... \$59

## ? DID YOU KNOW ?

DMI has been family owned and operated since 1997

We are known nation-wide for our outstanding customer service team!

### ATKINS AQUATUFF™ 351 WRAP AND STOW SERIES DIGITAL THERMOMETER



**8415-BP** Thermometer with Bell (Surface) Probe.....\$269



**8415-NP** Thermometer with Needle Probe ..... \$269

- **-100°F to 500°F**
- IPX7 Waterproof rated
- Auto shut-off
- 2 AAA Batteries included
- Wrap & Stow™ Probe can easily be replaced in the field without recalibration



**8415-1** Bell (Surface) Probe Only.....\$99



**8415-2** Needle Probe Only ..... \$99



**8415-3** Battery Cover..... \$19



**8415-4** Thermocouple Solid Simulator ..... \$49

- The Solid Simulator simulates food product temperature in changing ambient conditions of any refrigerator, freezer or walk-in.
- The temperature of the Solid Simulator will display immediately when plugged into your Atkins 351 Series Digital Thermometer





**8410** Pocket Thermometer, 1" Dial..... \$9  
**0°F to 220°F**



**8411** Pocket Thermometer, Digital w/Hold ..... \$29  
**-58°F to 302°F**



**8409** Cooler Thermometer, Metal ..... \$9  
**-20°F to 80°F**

- Hangs or stands for easy installation
- HACCP Safe Zones



**8409-1** Cooler Thermometer, Plastic ..... \$4  
**-40°F to 120°F**

- Space saving design
- HACCP Safe Zones



**8416** Electronic Timer / Clock / Stopwatch..... \$29

- Counts up or down
- Memory recall
- Easel stand, wire hanger, clip-on or magnet mount



**8419** Microwave Wattage Tester..... \$115



**8418** Digital Portion Scale ..... \$55

- Displays in Ounces, Pounds + Ounces, or Grams (Graduation 0.05 ounce)
- Automatic Shut-Off
- 2 AA batteries included
- 11 Lb. Capacity



**8417** Mechanical Portion Scale ..... \$49

- Contoured stainless steel platform holds bagged items: fries, tacos, shrimp
- Easy to read dial
- 16oz. Capacity (Graduation 0.25 ounce)
- Compact, space-saving design

# VEGETABLE CHOPPERS

## NEMCO EASY CHOPPER™



**8580-2 (N55500-2) Chopper, 3/8" Cut.....\$299**

- Fast, easy chopping of onions, tomatoes, potatoes, celery and peppers
- **3-1/4" square cutting area**
- Consistent cut size for portion control
- Blade & holder assembly easily replaceable



**8582-2 Blade Assy,  
3/8" Cut .....\$139**



**8581-2 Push Block,  
3/8" Cut .....\$31**



**8583 Push Block  
Guide .....\$62**



**8583-S Thumb  
Screw for Push  
Block Guide.....\$2.50**

## NEMCO EASY CHOPPER II™



**8590-2 (N56500-2) Chopper, 3/8" Cut.....\$379**

- Fast, easy chopping of onions, tomatoes, potatoes, celery and peppers
- **4-1/4" square cutting area**
- Consistent cut size for portion control
- A 1/3 size, 2" deep food pan fits beneath the Easy Chopper II



**8592-2 Blade Assy,  
3/8" Cut .....\$185**



**8591-2 Push Block,  
3/8" Cut .....\$35**



**8593 Push Block  
Guide .....\$76**



**8593-S Thumb  
Screw for Push  
Block Guide.....\$3**

## FOR BOTH NEMCO EASY CHOPPER™ AND EASY CHOPPER II™



**8902  
Foot Pad.....\$3.50 ea**



**8579  
Bumper .....\$4**



**8578  
Handle .....\$65**



**8578-S Screw  
For Handle.....\$2**

## NEMCO EASY SLICER VEGETABLE CUTTER



**8560 (N55200AN) Slicer, Adjustable Cut .....\$549**

- Compact, portable, and easy to use
- Set the desired thickness by turning a thumb screw (calibrated in 1/16" increments to a maximum of 1/2")
- Mounting base (sold separately) attaches easily to countertops or other flat surfaces



**8560-1**  
Blade Set, Adjustable Cut..... **\$75**



**8563**  
Shaft Lock Assembly ..... **\$28**



**8561**  
Guard ..... **\$75**



**8565**  
Portable Base..... **\$229**

## CUT RESISTANT GLOVES

**Tucker Red Glove .... \$21 ea**

- 8405-S** Small
- 8405-M** Medium
- 8405-L** Large



**White/Blue Glove ..... \$18 ea**

- 8404-S** Small
- 8404-M** Medium
- 8404-L** Large



**8549**  
Vegetable Slicer  
Blade Brush ..... **\$32**



**8551**  
Tomato Core-It..... **\$3.50**



# VEGETABLE SLICERS

## NEMCO EASY TOMATO SLICER

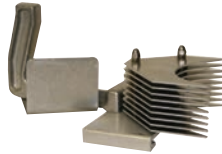


<b>8556</b> (N55600-2) Slicer, 1/4" Blades.....	<b>\$389</b>
<b>8556-A</b> (N55600-1) Slicer, 3/16" Blades.....	<b>\$389</b>

- Cleanly cut mounds of uniformly sliced tomatoes in seconds
- Razor sharp stainless steel blades
- Unique design provides long life



<b>8556-1</b> Blade Set, 1/4" (10 Blades).....	<b>\$49</b>
<b>8556-1A</b> Blade Set, 3/16" (13 Blades).....	<b>\$49</b>



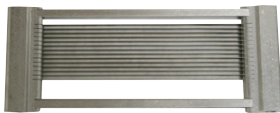
<b>8556-4</b> Pusher Head, 1/4".....	<b>\$149</b>
<b>8556-4A</b> Pusher Head, 3/16".....	<b>\$149</b>

## NEMCO EASY TOMATO SLICER II™

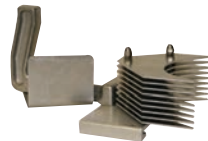


<b>8557</b> (N56600-2) Slicer, 1/4" Blades.....	<b>\$475</b>
<b>8557-A</b> (N56600-1) Slicer, 3/16" Blades.....	<b>\$475</b>

- No need to adjust the blades
- New Pretensioned blade cartridge maximizes safety and blade longevity
- Blades are razor sharp stainless steel for a smooth, precise cut



<b>8557-1</b> Blade Set, 1/4" (11 Blades).....	<b>\$89</b>
<b>8557-1A</b> Blade Set, 3/16" (14 Blades).....	<b>\$89</b>



<b>8557-4</b> Pusher Head, 1/4".....	<b>\$159</b>
<b>8557-4A</b> Pusher Head, 3/16".....	<b>\$179</b>



<b>8902</b> Foot Pad.....	<b>\$3.50 ea</b>
------------------------------	------------------

**We carry additional replacement parts  
for Nemco Slicers and Choppers.**

**Call 1-800-238-5384 for pricing  
and availability.**

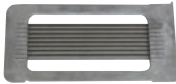
## PRINCE CASTLE TOMATO SABER 943 SERIES



**8550** Slicer, 1/4" Blades included (9 Blades) ..... **\$529**

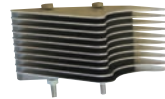
**8550-H** Slicer, 1/4" Blades included (11 Blades, High Yield) ..... **\$529**

- Perma-Tight blade cartridge system never needs adjustment
- Tomato Catcher reduces clean-up and improves food safety



**8550-1** Blade Set, 1/4" (9 Blades) .... **\$115**

**8550-1H** Blade Set, 1/4" (11 Blades, High Yield) ..... **\$119**



**8550-4** Pusher Head, 1/4" ..... **\$85**

*Works with both the 9 and 11 blade 1/4" sets.*



**8550-2**  
Catcher, Red Plastic..... **\$25**



**8550-3**  
Pusher Handle, Red Plastic..... **\$39**



**8550-6**  
Guide Rod Bearing..... **ea. \$14**



**8550-7**  
Guide Rod Cushions .... **4-pk \$26**



**8550-5**  
Replacement Feet..... **4-pk \$15**

Thousands of loyal customers agree:

DMI's convenient **AUTOSHIP PROGRAM** can't be beat!

- 1** Choose any quantity & combination of items found in our catalog. The most popular Autoship items are:  

**Charbroiler Sheets, Toaster Sheets,  
Safety Apparel, Filter Pads**
- 2** Choose frequency of Autoship:  

**Monthly, Bi-Monthly, Quarterly, or Semi-Annually**

## TONGS



6" Plastic .....\$2.75

**8420-BK** Black

**8420-R** Red

**8420-G** Green



9" Plastic .....\$3.75

**8422-B** Blue

**8422-R** Red

**8422-G** Green



**8423-R**

12" Plastic, Red .....\$6



**8424**

9" Steel Lift N Grip.....\$11

**8425**

12" Steel Lift N Grip.....\$13



**9009**

9" Steel Scalloped.....\$11

**9012**

12" Steel Scalloped.....\$10



9" Metal with Plastic Coated Handle .....\$13.50

**9009-BK** Black

**9009-B** Blue

**9009-R** Red

**9009-G** Green

**9009-Y** Yellow



**9050-BK**

Refillable Grease Pencils,  
Black, Box of 12.....\$14



**9051-BK**

Pencil Refills, Black,  
Box of 72 .....\$9



**8426-BK** Black Solid  
Spoon, 1/4 oz. .... **\$3**



**8427-G** Green Solid  
Spoon, 1/2 oz. .... **\$3**



**8427-T** Tan Solid  
Spoon, 1/2 oz. .... **\$3**



**8428-BR** Brown Solid  
Spoon, 3/4 oz. ... **\$3.50**



**8428-R** Red Solid  
Spoon, 3/4 oz. ... **\$3.50**



**8428-C** Clear Solid  
Spoon, 3/4 oz. ... **\$3.50**



**8429-BR** Brown Slotted  
Spoon, 3/4 oz. ... **\$3.50**

## SOLID SHORT MEASUREMISERS



**9008** Red Portion  
Cup, 2 oz. .... **\$7.75**



**10520-R** Red  
Markings, 2 oz. ... **\$9.50**



**10520-B** Blue  
Markings, 3 oz. ... **\$9.50**



**10520-G** Green  
Markings, 4 oz. ... **\$9.50**

## SOLID LONG MEASUREMISERS



**10522-P** Purple  
Markings, 1-1/2 oz. **\$9.50**



**10522-R** Red  
Markings, 2 oz. ... **\$9.50**



**10522-B** Blue  
Markings, 3 oz. ... **\$9.50**



**10522-G** Green  
Markings, 4 oz. ... **\$9.50**



**9003**  
Green Dish, 3-1/4 oz., #12. .... **\$9**



**9004**  
Yellow Dish, 2 oz., #20. .... **\$9**



**9002**  
Ice Cream Spade. .... **\$10.00**



**8471**  
Lettuce Knife,  
Green Plastic.....\$5



**8472**  
Lettuce Knife,  
Green Handle .....\$28



**8433-W**  
10" Scalloped Knife,  
White Handle .....\$14



**8433-BK**  
10" Scalloped Knife,  
Black Handle .....\$14



**10530-W**  
10" Chopping Knife,  
White Handle .....\$37



**10532-W**  
6" Scalloped Utility Knife,  
White Handle .....\$19



**8442**  
Chicken Cutter/  
Scoop.....\$18



**8470-G**  
Saf-T-Grip Cutting Board,  
12" x 18" Green .....\$25



**8470-W**  
Saf-T-Grip Cutting Board,  
12" x 18" White .....\$25



**8443**  
Saf-T- Grip Cutting Board,  
6" x 9" White .....\$9

Visit us online at  
**the NEW & improved**  
[www.dmiparts.com](http://www.dmiparts.com)  
 and see how simple it  
 is to search for parts  
 and place orders 24/7

The screenshot shows the DMIParts.com website interface. At the top, there is a search bar and a 'Login or Register' link. Below the navigation menu, a large red banner reads 'LARGE VARIETY OF PRODUCTS' with the subtext 'Equipment parts and kitchen accessories to keep you up and running.' The DMIParts logo is prominently displayed. A 'Shop Now' button is visible. At the bottom left, there is a 'ENROLL IN AUTO SHIP' button with a 'LEARN MORE' link. The bottom right shows various kitchen equipment items like a food processor, a kettle, and a water filter.





**9005**  
Wire Whisk, 12"..... \$6



**8434**  
Spatula/Sandwich Spreader,  
Plastic..... \$2



**8441**  
Amber Spatula ..... \$7



**10540-W**  
Metal Spatula, 6" x 3",  
White Handle..... \$32



**10542-W**  
Metal Spatula, 8" x 3",  
White Handle..... \$27



**10543**  
Metal Spatula, 8" x 3",  
Long Wooden Handle..... \$38



**10506**  
Plastic Bowl / Dough  
Scraper ..... \$1



**8446**  
Brown Salad Crock with  
Clear Lid, 1.2 qt. .... \$10



**8444**  
Clear Powdered Sugar  
Shaker with Top..... \$6



**9023**  
Metal Salt Shaker /  
Dredge Can ..... \$13



**10500-BK**  
Plastic Oval Basket,  
Black..... 12pk \$12



**Black Food Tray**  
**10502-BK** 10" x 14"..... \$3.50  
**10503-BK** 14" x 18"..... \$5.50



**Orange Food Tray**  
**10503-O** 14" x 18"..... \$5.50

## ACCUSALT SHAKER



**8440** AccuSalt Shaker with  
6.5 g Gray Insert Cover..... **\$59**



**8440-3**  
Insert Container ..... **\$12**



**8439** AccuSalt Shaker with  
3.7 g Black Insert Cover ..... **\$59**



**8440-1**  
Amber End Cap ..... **\$12**



**8440-4**  
Body Only ..... **\$34**



**8439-1**  
Black End Cap ..... **\$16**



**8440-2**  
Gray Insert Cover, 6.5 g..... **\$12**



**8439-2**  
Black Insert Cover, 3.7 g ..... **\$11**

## ACCUTASTE™ SEASONING DISPENSER



**9022**  
AccuTaste™ Seasoning Dispenser, .35cc Gray Unit ..... **\$53**

- Patented design provides accurate, repeatable and functional dispensing of a premeasured dose
- Hinged lid allows for easy refill
- Designed for easy cleaning without disassembly



**9020-1**  
Lid Only ..... **\$6**



**9020-2**  
Body Subassembly ..... **\$31**



**9022-1** Gray Base  
Subassembly, .35cc..... **\$21**



**9020-3**  
Pin Only ..... **\$2.50**



**9020-4**  
Spring Only ..... **\$8**



**9020-5**  
Thumbscrew Only ..... **\$2**

## SQUEEZE BOTTLES



**8436** Clear Squeeze Bottle with Clear Cap, 12 oz. .... **\$1.75**

**9007** Clear Squeeze Bottle with Clear Cap, 24 oz. .... **\$4.00**



**8435-C**  
Clear Cap Only  
(small opening).... **\$.75**



**8435-B**  
Blue Cap Only  
(large opening) ... **\$.75**



**8435-G**  
Green Cap Only  
(large opening) ..... **\$1.00**



**8460-S** FIFO Bottle with Green (Small) Valve Cap, 12oz ..... **\$2.50**

**8460-L** FIFO Bottle with Blue (Large) Valve Cap, 12oz ..... **\$2.50**



**8464**  
White End/Label  
Cap Only ..... **\$1.00**



**8465-S**  
Green (Small) Valve  
Cap Only ..... **\$1.50**



**8465-L**  
Blue (Large) Valve  
Cap Only ..... **\$1.50**



**8460-R** Squeeze Bottle with Red Dispensing and End Caps, 12oz. .... **\$2.50**



**8464-R**  
Red End  
Cap Only ..... **\$1.00**



**8465-R**  
Red Dispensing  
Cap Only ..... **\$1.50**

## KETCHUP DISPENSER PARTS



**8520 (83910)**  
Server Ketchup Pump  
w/Locking Lid ..... **\$275**



**8522 (84031)**  
7 Quart Insert/Base for #8520  
Server Ketchup Pump..... **\$49**



**8521 (82533)**  
Spare Parts Kit for #8520  
Server Ketchup Pump .. **\$18**



**8523 (82016)**  
Spring for #8520 Server  
Ketchup Pump ..... **\$3**

**ICEZONE®-X SANITATION SYSTEM**



**9030**  
IceZone X-30 ..... **\$395**  
**9030-B**  
Replacement UV Bulb .... **\$85**

- Keeps ice machines, ice bins, and beverage dispensers clean
- Prevents slime and mold
- Reduces bacteria, yeast and other microorganisms
- Reduces equipment cleanings and associated costs
- The only NSF certified sanitation
- Maintenance free - requires a simple annual UV lamp replacement
- Approved by all major ice machine manufacturers



*Sample installation*

NOTE: There are several mounting options



**8450**  
Saf-T-Ice® Tote, 6 Gallon ..... **\$65**

Use dedicated ice-only containers and utensils to keep ice protected, sanitary and your customers safe.

**SAF-T-SCOOP® & GUARDIAN SYSTEM™**



**12-16 ounce**  
**For Beverage Station:**

**8452**  
Guardian System™  
(includes Scoop, Holder & Mounting Tools) ..... **\$65**  
**8452-1**  
Replacement Scoop only .. **\$29**



**64-86 ounce**  
**For Ice Machines:**

**8453**  
Guardian System™  
(includes Scoop, Holder & Mounting Tools) ..... **\$105**  
**8453-1**  
Replacement Scoop only .. **\$39**



**8430**  
Ice/Shortening Scoop,  
Metal, 58 oz.  
(14-1/2" length) ... **\$25**



**8431**  
Ice Scoop, Plastic, 12 oz.  
(11-1/2" length) ..... **\$8**



**8432**  
Shortening Ladle,  
32 oz. (19" length) ... **\$25**

## SAFETY COATED – TEARDROP SHAPE



60 WATT COATED, 120V

8365..... \$6.50  
 8365-06 ..... **\$34 6-pack**

## INFRA-RED HEAT LAMP – CLEAR



375 WATT, 120V

8366..... \$12.50  
 8366-06..... **\$66 6-pack**  
 375 WATT COATED, 120V  
 8366C..... \$24  
 8366C-06..... **\$129 6-pack**

125 WATT, 120V

8395..... \$8  
 8395-06..... **\$43 6-pack**  
 125 WATT COATED, 120V  
 8395C..... \$19  
 8395C-06..... **\$103 6-pack**

250 WATT, 120V

8396..... \$8  
 8396-06..... **\$43 6-pack**  
 250 WATT COATED, 120V  
 8396C..... \$24  
 8396C-06..... **\$130 6-pack**

**SAVE 10% WHEN YOU PURCHASE  
 BULBS IN A 6-PACK!**

## SAFETY COATED – TRADITIONAL SHAPE



40 WATT COATED, 130V



8398..... \$6  
 8398-06..... **\$32 6-pack**

60 WATT COATED, 130V

8399..... \$6  
 8399-06..... **\$32 6-pack**

40 WATT COATED, 250V

8391..... \$9  
 8391-06..... **\$49 6-pack**

 **There are several  
 convenient ways to  
 place your order with DMI** 

**Call Toll Free** 1-800-238-5384  
 weekdays 8:15 am to 5:00 pm

Or order anytime:

**Online:** [www.dmparts.com](http://www.dmparts.com)  
**Email:** [orders@dmparts.com](mailto:orders@dmparts.com)  
**Toll Free Fax:** 866-302-9397



Pan



Flat Lid



Lid w/Handle



Drain Rack

## Clear Pans - For Cold Food (-40°F to +210°F)

	Part #	Description	Price
<b>FULL SIZE</b> 20-7/8" x 12-3/4"	8751-2	Pan, 2-1/2" Deep	\$14.00
	8751-6	Pan, 6" Deep	\$23.00
	8751-HL	Pan Lid w/Handle	\$15.00
	8751-NL	Pan Lid w/Handle & Notch	\$16.00
	8751-1	Drain Rack	\$14.00
<b>1/2 SIZE</b> 10-7/16" x 12-3/4"	8752-2	Pan, 2-1/2" Deep	\$8.50
	8752-4	Pan, 4" Deep	\$10.00
	8752-6	Pan, 6" Deep	\$13.00
	8752-FL	Pan Lid - Flat	\$7.50
	8752-HL	Pan Lid w/Handle	\$7.50
	8752-1	Drain Rack	\$6.25
<b>1/3 SIZE</b> 6-15/16" x 12-3/4"	8753-2	Pan, 2-1/2" Deep	\$6.50
	8753-4	Pan, 4" Deep	\$9.00
	8753-6	Pan, 6" Deep	\$9.50
	8753-FL	Pan Lid - Flat	\$5.00
	8753-HL	Pan Lid w/Handle	\$5.00
	8753-1	Drain Rack	\$5.00
<b>1/6 SIZE</b> 6-3/8" x 6-15/16"	8756-2	Pan, 2-1/2" Deep	\$4.50
	8756-4	Pan, 4" Deep	\$5.00
	8756-6	Pan, 6" Deep	\$7.00
	8756-FL	Pan Lid - Flat	\$3.75
	8756-HL	Pan Lid w/Handle	\$4.25
	8756-NL	Pan Lid w/Handle & Notch	\$4.25
	8756-1	Drain Rack	\$2.25
<b>1/9 SIZE</b> 4-1/4" x 6-15/16"	8759-4	Pan, 4" Deep	\$6.00
	8759-FL	Pan Lid - Flat	\$4.00
	8759-NL	Pan Lid - Flat w/Notch	\$4.00
	8759-1	Drain Rack	\$2.00

### Commonly Ordered Clear Food Pans:

#### 8752-2

1/2 Size, 2-1/2" Deep:  
Tomatoes

#### 8752-4

1/2 Size, 4" Deep:  
Lettuce

#### 8753-4

1/3 Size, 4" Deep:  
Pickles / Onions

#### 8756-4

1/6 Size, 4" Deep:  
Red Onions / Cheese



Pan



Lid w/Handle



Lid w/Handle & Notch



Drain Rack

## Amber Pans - For Hot Food (-40°F to +300°F)

	Part #	Description	Price
<b>FULL SIZE</b> 20-7/8" x 12-3/4"	8741-6	Pan, 6" Deep	\$69.00
	8741-HL	Pan Lid w/Handle	\$49.00
<b>1/2 SIZE</b> 10-7/16" x 12-3/4"	8742-2	Pan, 2-1/2" Deep	\$22.00
	8742-6	Pan 6" Deep	\$38.00
	8742-HL	Pan Lid w/Handle	\$23.00
	8742-1	Drain Rack	\$16.00
<b>1/3 SIZE</b> 6-15/16" x 12-3/4"	8743-2	Pan, 2-1/2" Deep	\$19.00
	8743-4	Pan, 4" Deep	\$24.00
	8743-6	Pan, 6" Deep	\$33.00
	8743-HL	Pan Lid w/Handle	\$15.00
	8743-NL	Pan Lid w/Handle & Notch	\$15.00
	8743-1	Drain Rack	\$9.00
<b>1/4 SIZE</b> 6-3/8" x 10-7/16"	8744-4	Pan, 4" Deep	\$21.00
	8744-6	Pan, 6" Deep	\$26.00
	8744-HL	Pan Lid w/Handle	\$11.00
	8744-1	Drain Rack	\$10.00
<b>1/6 SIZE</b> 6-3/8" x 6-15/16"	8746-2	Pan, 2-1/2" Deep	\$13.50
	8746-4	Pan, 4" Deep	\$16.50
	8746-6	Pan, 6" Deep	\$19.00
	8746-HL	Pan Lid w/Handle	\$10.00
	8746-NL	Pan Lid w/Handle & Notch	\$10.00
	8746-1	Drain Rack	\$5.50
<b>1/9 SIZE</b> 4-1/4" x 6-15/16"	8749-2	Pan, 2-1/2" Deep	\$10.00
	8749-FL	Pan Lid - Flat	\$7.00

## FOOD PANS



Pan



Lid w/Handle



Lid w/Handle &amp; Notch



Drain Rack

## Stainless Steel Pans

	Part#	Description	Price
<b>1/2 SIZE</b> 10.4" x 12.8"	8762-2	Pan, 2-1/2" Deep	\$15.00
	8762-4	Pan, 4" Deep	\$18.00
	8762-6	Pan, 6" Deep	\$24.00
	8762-HL	Pan Lid w/Handle	\$11.00
	8762-1	Drain Rack	\$22.00
<b>1/3 SIZE</b> 6.9" x 12.8"	8763-4	Pan, 4" Deep	\$16.00
	8763-6	Pan, 6" Deep	\$24.00
	8763-HL	Pan Lid w/Handle	\$10.00
	8763-NL	Pan Lid w/Handle & Notch	\$10.00
<b>8704</b> 1/3 Size Wire Mesh Drain Rack .....	<b>\$4.75</b>		
<b>8707</b> 1/3 Size Stainless Steel Drain Rack .....	<b>\$10.00</b>		
<b>1/6 SIZE</b> 6.4" x 7.0"	8766-4	Pan, 4" Deep	\$13.00
	8766-6	Pan, 6" Deep	\$16.00
	8766-HL	Pan Lid w/Handle	\$9.00
	8766-NL	Pan Lid w/Handle & Notch	\$9.00
	8766-1	Drain Rack	\$15.50
<b>1/9 SIZE</b> 4.3" x 6.9"	8769-4	Pan, 4" Deep	\$12.00
	8769-NL	Pan Lid w/Handle & Notch	\$8.00





**8736-4**  
1/6 Size Pan, 4" Deep, Black **\$15.50**  
(6-3/8" x 6-15/16") (-40°F to +375°F)



**8737**  
Coldmaster Whipped Cream  
Can Chiller, Black..... **\$55**



**8738**  
Coldmaster Insulated Food  
Pan, Black..... **\$49**



**8446**  
Brown Salad Crock with  
Clear Lid, 1.2qt. .... **\$9**



**8495**  
1/2 Size Aluminum Baking Pan,  
12-7/8" X 17-3/4" ..... **\$10**



**8496**  
1/2 Size Wire Pan Insert,  
11-7/8" X 16-3/8" ..... **\$26**



**8437**  
Bacon Microwave Tray..... **2-pack \$23**



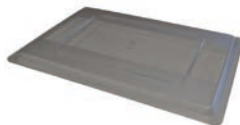
**8437-1**  
Microwave Shelf for  
Bacon Trays ..... **\$21**



**8438**  
Stackable Bacon Microwave  
Trays ..... **4-pack \$59**



**8760**  
Lettuce Storage Box,  
18" X 26" X 6" ..... **\$43**



**8760-FL**  
Lettuce Storage Box Lid,  
18" X 26" ..... **\$20**



**8760-C**  
Lettuce Storage Box  
Colander, 18" X 26" ..... **\$33**



**10510-W**  
Food Box, 18" x 26" x 6", White..... **\$42**



**10511-W**  
Food Box Lid, 18" x 26", White ..... **\$21**



**10512-C**  
Food Box, 18" x 12" x 6", Clear..... **\$29**



**10513-C**  
Food Box Lid, 18" x 12", Clear ..... **\$14**



**10512-R**  
Food Box, 18" x 12" x 6", Red..... **\$35**



**10513-R**  
Food Box Lid, 18" x 12", Red ..... **\$18**



**10512-W**  
Food Box, 18" x 12" x 6", White..... **\$24**



**10513-W**  
Food Box Lid, 18" x 12", White ..... **\$16**



**8706**  
Single Handle Pan, Amber ..... each **\$19.95**



**8700**  
Dual Handle Pan, Amber .....6-pack **\$119**

**SPECIAL BULK DISCOUNT OFFER:**

Place an order for Six 6-Packs of DMI's Dual Handle Pans (36 pans) and **SAVE 10%!**  
*(price per 6-pack drops from \$119 to **\$107.10**)*

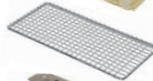


**8730**  
Holding Unit Cleaning Brush.....each **\$29**

**1/3 SIZE DRAIN RACKS**



**8743-1**  
Amber ..... **\$9.00**



**8704**  
Wire Mesh ..... **\$4.75**



**8707**  
Stainless Steel ..... **\$10.00**

**FOR PRINCE CASTLE UNITS**



**8703**  
Prince Castle Black Cover ..... **\$49**

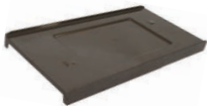


**8855-M**  
Prince Castle Timer Overlay Kit, Main..... **\$89**  
(Has red & blue arrows & says "Menu", "Enter", "BKFT" & "Reg")



**8855-A**  
Prince Castle Timer Overlay Kit, Aux ..... **\$89**

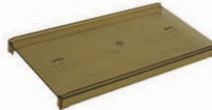
**FOR DUKE UNITS**



**8702-S**  
Solid Brown  
Cover ..... **\$25**



**8702-V**  
Vented Tan  
Cover ..... **\$25**



**8705-S**  
Solid Amber  
Cover ..... **\$16.50**



**8705-V**  
Vented Amber  
Cover ..... **\$16.50**

Visit us online at [www.dmi.parts.com](http://www.dmi.parts.com)  
and see how simple it is to search for  
parts and place orders 24/7



Presort Std  
U.S. Postage  
PAID  
Mentor, OH  
Permit No. 238



Now featuring the ability to check out as a guest,  
or create an account where you can:

- Check out faster
- Access your order history
- Save multiple shipping addresses  
(perfect for Maintenance Techs and  
District Managers)