

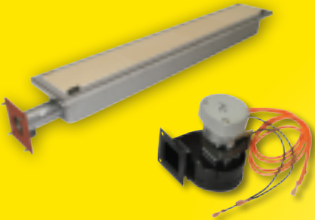


dmiTM

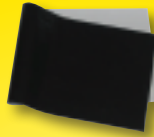
MANUFACTURING, INC.

*Your Reliable Source For Equipment Parts
& Smallwares Since 1997*

*2024
Spring
Catalog*



Broiler Parts
including JF & FH Parts



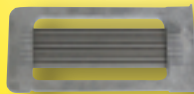
Toaster Parts
including BKT-2V Parts



Safety & Maintenance



Fryer Parts & Accessories



Vegetable Slicers



Smallwares & More!



1-800-238-5384
www.dmiparts.com
Fax: 1-866-302-9397



Apr 2024

Table of Contents & Ordering Information

BROILER PARTS – Duke	3-8
BROILER PARTS – JF93 & JF94	9
BROILER PARTS – FH94	10
BROILER PARTS – MPB94	11-14
TOASTER PARTS	
Antunes Round-Up	15-20
Prince Castle	21-24
Marshall Air	22
EGG COOKER PARTS	25-26
SAFETY APPAREL	27-29
MAINTENANCE	30-33
FRYER ACCESSORIES & PARTS	
Frymaster MJ45 & H50	34-36
Fryer Tools & Accessories	37-41
Hood Filters	41
Gycor Filter Pads	42-43
Forced Air Fry Station	44
OTHER	
Bulbs	45
Vegetable Slicers	46-51
Thermometers, Scales & Timers	52-53
Smallwares	54-60
Shake & Soft Serve	61
Food Pans	62-65
Holding Units	66-67

Your Customer Service Team



Mark



Denise



Dennis



Julie



Celina



Alethea



- DMI is open from 8:15 am to 5:00 pm EST Mon-Fri. Your call will always be answered by a live customer service representative during business hours. Phone messages left after-hours will be returned on the next business day.
- Fax Website and Email are available 24 hours/7 days a week.
- There is no minimum order.
- All prices are subject to change. Check www.dmiparts.com for the most current pricing.
- For ground shipment transit times, see map on page 47.
- Part numbers listed in green are for reference only.

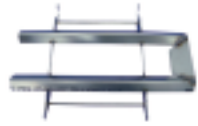
Toll Free Phone Orders: 800-238-5384
Toll Free Fax Orders: 866-302-9397
Local Phone Orders: 440-975-8645
Local Fax Orders: 440-975-0688
Website Orders: www.dmiparts.com
Email Orders: orders@dmiparts.com
From Mexico: 001-800-238-5384



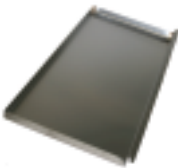
4000 (600222)
Flame Arrestor..... **\$565**



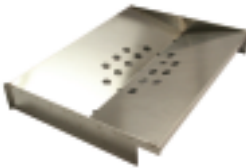
J Style Burner Tube
4008 (176370) Nat or LP Gas..... **\$237**
4010 (175950) High Altitude..... **\$389**



4012 (175200K)
Burner Shield..... **\$403**



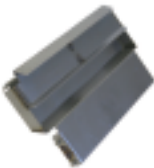
4002 (176398)
Main Grease Pan **\$169**



4004 (176397)
"V" Grease Pan **\$341**



4006 (175351F)
Lower J Burner Panel..... **\$188**



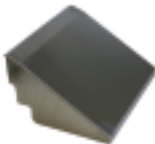
4016 (175150PS)
Pivot Ash Scraper..... **\$259**



4018 (175866PS)
Discharge Access Panel **\$242**



4020 (175340PS)
Discharge Chute..... **\$394**



4022 (175778WELD)
Discharge Hood..... **\$195**



4028 (175358PS)
Discharge Pan..... **\$188**



4026 (175357PS)
Side Grease Pan..... **\$259**



4024 (175353PS)
Product Pan Shelf..... **\$139**



4029
Splash Shield..... **\$35**



4030 (175300)
Front Panel..... **\$187**



4032 (175741PS)
Loader Ramp..... **\$229**



4036 (175878PS)
Loader Mounting Bracket..... **\$485**



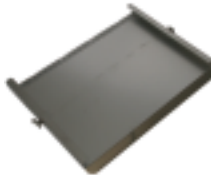
4034 (175429PS)
Door..... **\$95**



4047 (600407)
Air Brake..... **\$159**



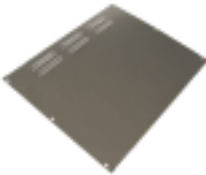
4038 (175444PS)
Loader..... **\$813**



4040 (175430PS)
Loader Tray..... **\$395**



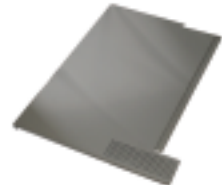
4046 (175226)
Impedance Pan (if no
optional catalyst)..... **\$155**



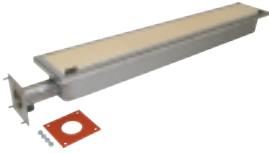
4042 (175383)
Electrical LWB Access Panel..... **\$83**



4044 (175392)
Right Side Upper Lift Off
Panel..... **\$57**



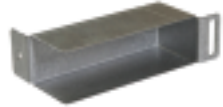
4050 (175305)
Rear Access Panel..... **\$279**



4101 (176901)
Infrared Upper Burner **\$432**



4136 (175535)
Upper Burner Sensor **\$77**
Lower Burner Sensor on p. 8



4138 (175380)
Ignition Cable Shield **\$94**



4086 (175536)
Igniter..... **\$43**



4085 (175095)
Upper Igniter Guard..... **\$95**



4087 (175032)
Lower Igniter Shield..... **\$64**



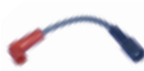
4068 (177830K)
Upper Burner Ignition
Module **\$318**



4070 (175537)
Upper Burner Ignition
Cable **\$16**



Lower Burner Ignition Module
4064 (175877) Nat Gas..... **\$255**
4065 (175872) LP Gas..... **\$299**



4066 (175538)
Lower Burner Ignition
Cable **\$16**



4072 (175507)
Motor Capacitor..... **\$33**



4074 (175516)
Transformer..... **\$68**



4076 (175870)
Solid State Relay ... **\$76**



4088 (175503)
Main Power Switch **\$20**

BROILER PARTS – DUKE

Top, Front & Electrical Components



4062 (600-250SED)
Blower, 60Hz 120VAC.....\$479



4060 (175511)
Blower Inlet Gasket..... \$4



4146 (175108)
Blower Box Cover..... \$218



4142 (175189)
Blower Hose..... \$21



4092 (175873/175575)
Control Board..... \$969



4094 (175510)
Control Board Gasket..... \$16



4090 (175356)
Control Board Mounting Frame..\$46



4102 (175867)
Conveyor Motor.....\$171



4078 (175517)
Sprocket, B21 x 3/8"
Bore (Motor).....\$47



4104 (175176)
Motor Mounting Bracket\$20



4082 (175525)
Conveyor Bushing Block.....\$23



4084 (175038PS)
Right Side Conveyor Shaft..... \$113





4096 (175550)
Cook Light\$10



Combo Valve

4120 (175531) Nat Gas.....\$159

4122 (175776) LP Gas.....\$152

Upper Front Orifices	
	4106 (175735) #40 Nat Gas \$10
	4108 (175767) #52 LP Gas \$21

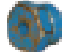

Lower Burner Orifices	
	4130 (176404) #30 Nat Gas \$32
	4132 (176412) #46 LP Gas \$19



4126 (175540)

Base Connector,

Valve to tube \$11

Upper Rear Orifices	
	4110 (175736) #36 Nat Gas \$18
	4112 (175768) #51 LP Gas \$21

Orifice Holders	
	4134 (600290) Lower Burner \$28
	4118 (175542) Upper Burner \$20



4116 (175541)

Tee Compression Fitting..... \$19




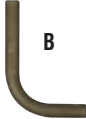
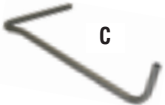
4115 (175547)

Compression Sleeve, 3/8" ..\$1.50



4117 (175548)

Compression Nut, 3/8".....\$2.75

Tubing Kits		
		
A	4114 (175476)	Tee to Upper Burner
B	4128 (175478)	Lower Burner to Valve
C	4140 (175477)	Tee to Valve
		\$30
		\$37
		\$102



8247

Super Swivel, 3/4" NPT.....\$99



GAS HOSE, 3/4" NPT

8245 36" Length.....\$185

8245-48 48" Length \$199



8246

Quick Disconnect, 3/4" NPT.....\$69

REAR, DISCHARGE SIDE & BROILER STAND COMPONENTS



4170 (175534)
Lower Burner Sensor..... **\$74**
Upper Burner Sensor on p. 5



4172 (175977)
Temperature Probe,
C-Chamber.....**\$189**



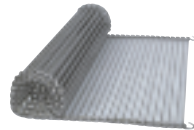
4194 (175656)
Power Cord with Orange
Plug.....**\$49**



4180 (175551)
Drive Chain (Complete).....**\$20**



4178 (175037PS)
Discharge Side Shaft.....**\$143**



4182 (175674)
Cook Chain (Complete).....**\$349**



4190 (175562)
Caster with Brake.....**\$39**



4192 (175563)
Caster without Brake.....**\$39**



8291
Pliers for Cook Chain.....**\$51**

TOOLS



4184 (175485)
Tube Burner Cleaning Tool.....**\$63**



4186 (175701)
Flame Rod Tube Cleaner.....**\$45**



4189 (175696)
Loader Tool / Socket Wrench.....**\$104**



4188 (175705)
Brush for Flame Rod Tube Cleaner.....**\$3**

BROILER SHEET, TAN

See PTFE Disclosure on p. 15



- JF93** (9-3/4" x 22-5/8")
8200.....Each **\$9**
8200-06.....6-pack **\$43**
- JF94** (9-3/4" x 28")
8201.....Each **\$10**
8201-06.....6-pack **\$48**



- 3000** (18447)
 High Pressure Blower.....**\$835**



- 3723** (25957 /17185)
 Flame Sensor, Slotted.....**\$73**



- 3068** (18861)
 Thermocouple Probe, 48".....**\$62**



- 3040** (20786) Gear Motor,
 DC, Brushless.....**\$829**

- 3041** (178996) Sprocket,10T, Motor,
 3/8" Bore.....**\$42**



- 3072** (13579)
 Motor Reversing Switch.....**\$26**



- 3718** (16921)
 Ignition Module.....**\$347**



- 3720** (10291)
 Igniter.....**\$109**



- 3744** (15480)
 Main On/Off Switch.....**\$195**



- 3734** (6049) Bearing,
 1" W x 1-7/8" H, 5/8" Shaft,
 Feed End.....**\$43**



- 3730** (6046) Bearing,
 1" W x 1-7/8" H, 1-1/4" Shaft,
 Discharge Outer Drive Shaft.....**\$46**



- 3106** (25332)
 Combination Wrench Tool.....**\$46**



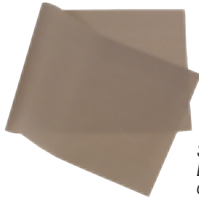
- 3107** (25333)
 Shaft Cleaning Tool.....**\$34**



- 3108** (23307)
 Cleaning Brush.....**\$24**



*Don't see the broiler parts you need?
Call us at 1-800-238-5384 for pricing and
availability of other items*



See PTFE
Disclosure
on p. 15

**BROILER SHEET,
TAN, 19-3/8" X 28"**

8202..... Each **\$17**
8202-06.....6 Pack **\$81**



3401 (27873)
Upper Double Burner, 28.5 **\$514**



3400 (29747)
Lower Triple Burner, 28.5 **\$815**



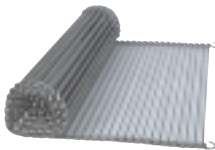
3402 (15576)
Thermocouple Probe, 4.09"
Type J, 60" Leads..... **\$64**



3403 (26398)
Spark Ignitor, 2.281" **\$129**



3404 (27942)
Flame Sensor with Cable, Angled.. **\$77**



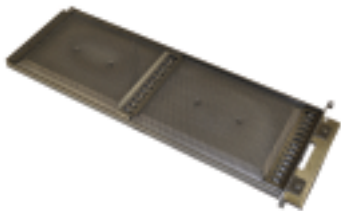
8290-13 (6035)
Rod Belt, 13" Width, per foot
(5ft. required per side)..... **\$59/ft**



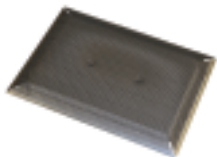
3405 (26606)
High Pressure Blower, 24V..... **\$785**



3406 (26490)
Gear Motor, Parallel, BLDC..... **\$655**



3700 (19970)
Complete Flame Arrestor Assembly \$499



3701 (19980)
Flame Arrestor
Insert Only \$179



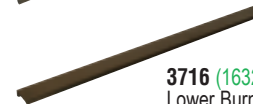
3704 (17402)
Upper Burner with Reflector..... \$539



3708 (16378)
Lower Burner..... \$162



3710 (16389)
Dual Lower Burner \$169



3716 (16320)
Lower Burner Shield..... \$181



3714 (17372)
Upper Heat Reflector..... \$375



3712 (16794)
Pan Holder \$429



3718 (16921)
Ignition Module \$347



3720 (10291)
Igniter..... \$109



3722 (16857)
Flame Sensor, Snap-In \$43



3723 (25957 /17185)
Flame Sensor, Slotted..... \$73



8247
Super Swivel, 3/4" NPT..... \$99



GAS HOSE, 3/4" NPT
8245 36" Length..... \$185
8245-48 48" Length..... \$199



8246
Quick Disconnect, 3/4" NPT..... \$69

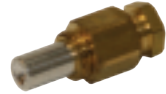


8220 (2001)
Gas Pressure Gauge,
1/8" NPT **\$58**

8220-A (2001-01)
Lens Only **\$3**



3012 (2051)
Burner Orifice, #46, Nat Gas,..... **\$10**



3010 (2182)
Pilot Orifice, Nat Gas..... **\$10**

8233 (2023)
Pilot Orifice, LP Gas..... **\$9**



8235-2 (2179)
Pilot Carryover Burner, **\$39**



3025 (2180)
Pilot Carryover Burner, **\$107**



8228 (2049-A)
Regulator, RV48, 1/2" NPT **\$65**



3027 (12741)
Solenoid Valve, 1/2 NPT, **\$262**

PTFE BEARINGS



3730 (6046)
1" W x 1-7/8" H, 1-1/4" Shaft,
Discharge Outer Drive Shaft ... **\$46**

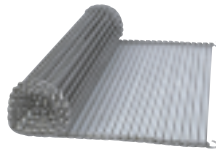


3732 (6047)
1" W x 1-7/8" H, 3/4" Shaft,
Discharge Inner Drive Shaft ... **\$46**

3734 (6049)
1" W x 1-7/8" H, 5/8" Shaft, Feed
End **\$43**



3713 (16208)
Grease Pan **\$979**



8290-13 (6035)
Rod Belt, 13" Width **\$59/ft.**
5 ft. req'd on each side



8295 (6027)
#35 Drive Chain..... **\$4/ft**



3736 (14572 / 23640)
Brushless Motor, Old Style.....**\$2899**
Wiring harness included (not Pictured)



3737 (17932)
Brushless Motor, New Style.....**\$839**



MOTOR SPROCKETS

3738 (13770)
For **3736** Motor.....**\$79**

3041 (17899)
For **3737** Motor.....**\$42**

Please provide broiler serial number when ordering either of these motors.



HEATING ELEMENTS

3740 (15691) 950W Main..... **\$205**

3742 (16055) 725W Flex..... **\$199**



3745 (18167)
On/Off Switch, 3 Position**\$389**



3744 (15480)
Main On/Off Switch.....**\$195**



3752 (13570-C)
Load Sensing/Temperature Control,
11 Pin **\$844**



3754 (13737)
Socket Base, 11 Pin **\$44**



TEMPERATURE PROBES

3746 (16407) Short**\$68**

3748 (16408) Long.....**\$70**



3750 (13727-B)
Motor Control, 8 Pin **\$599**



8266 (4136)
Control Base, 8 Pin.....**\$9**



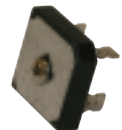
8274-R (4100)
Indicator Light, Red**\$4**



3072 (13579)
Motor Reversing Switch**\$26**



3075 (16034)
Control Transformer,
115/230VAC, 24V **\$158**



3076 (12725)
Bridge Rectifier..... **\$32**



3756 (17409)
Flex Feed Belt (Complete) **\$499**



3758 (19306)
Main Side Bar/Chain
Assembly **\$869**



3759 (15617)
Main Side Bar Only **\$159**



3125 (15882)
Combo Clutch Assembly **\$559**



3126 (14900)
Clutched Sprocket Only **\$409**



3130 (11608)
Clutch Knob, Black **\$28**



3127 (10275)
Thrust Washer **\$6**



3128 (14896)
Bearing, Shoulder Washer ... **\$16.50**



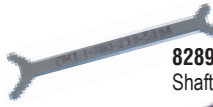
3129 (10627)
Bearing Clip **\$4**



3724 (11730)
Orifice Brush, 1/16" Diam **\$8**



3726 (11731)
Orifice Brush, 3/32" Diam **\$7**



8289
Shaft Cleaning Tool **\$6**



8357
Cleaning Brush, Soft Nylon **\$13**



8291
Pliers for Rod Belt **\$51**



8359
Cleaning Brush, Hard Nylon **\$11**



8296
#35 Chain Breaker Tool **\$61**



BLACK/SILVER TOASTER SHEET (12-1/4" X 33")

- 8216Each **\$11.50**
- 8216-03 3-pack **\$31.00**
- 8216-10 10-pack **\$92.00**
- 8216-Roll12-1/4" x 108ft. Continuous Roll **\$359**
(equal to 39 sheets)



This product contains PTFE. For more information about the chemicals in the product visit. afcmaterials.com/about/disclosures

Este producto contiene PTFE. Para obtener más información sobre los químicos en el producto visite. afcmaterials.com/about/disclosures

ON SHEETS SAVE:

10% on 3-packs

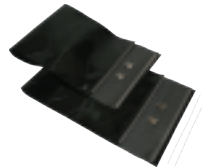
20% on 10-packs

25% on Rolls!



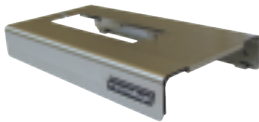
CONVEYOR BELTS, ORIGINAL

- 8216-W2-pack **\$98.95**

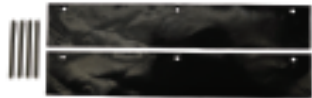


CONVEYOR BELTS, CLIP STYLE

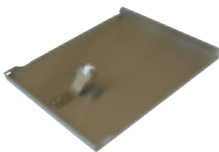
- 8217-W2-pack **\$98.95**



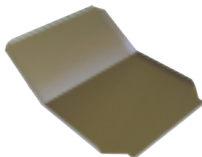
- 8618 (0011528)
Top Heat Shield..... **\$235**



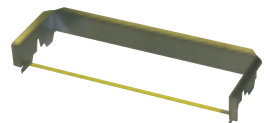
- 8634 (7000578)
Toaster Damper Replacement Kit..... **\$18**



- 8619 (7000322)
Conveyor Cover..... **\$216**



- 8620 (0503385)
Bun Chute..... **\$46**



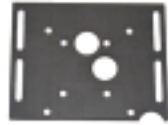
- 8623 (7000292)
Bun Feeder..... **\$98**



8600 (7000240)
Drive Motor Kit, 230V.....\$159



8629 (0503589)
Motor Bracket.....\$24



8630 (0503590)
Motor Plate.....\$9

SPROCKETS



8637 (7001652)
Motor, 18T, 5/16" Bore.....\$15



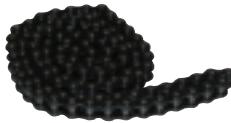
8604 (7001331)
Drive Front, 24T, 1/2" Bore.....\$19

8636 (70001329)
Drive Rear, 20T, 1/2" Bore.....\$20

8606 (7001312)
Idler, 14T.....\$24



8607 (7000207)
Conveyor Sprocket.....\$30



8608 (7001330)
Drive Chain (Complete).....\$37



8615 (7000539 / 7000224)
Universal VCT Bearing Kit.....\$184
Now includes #8614 Ball Bearings



8613 (7000199)
Aluminum Spacer, 2-pk.....\$20



8609 (7000644)
Rod, Conveyor Cover.....\$20



8614 (7002108)
Ball Bearing, 2-pk.....\$19



8616 (7001327)
Drive Shaft.....\$29

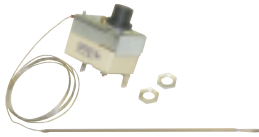
8617 (2150117)
Idler Shaft.....\$22



8632 (0700479)
Power Cord.....\$64



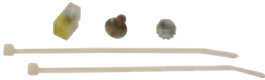
8625 (7000810 / 4050214)
Platen Thermocouple \$49



8626 (7001339)
High Limit Switch.....\$69



8631 (7000739)
Control Board \$312



8601 (7001436)
Interlock Bypass Kit.....\$7
NOTE: the On/Off Switch has been discontinued and replaced with this bypass. Instructions Included.



8602 (7000652)
Solid State Relay.....\$82



8612 (7000882)
On/Off Rocker Switch.....\$18



8621 (7000913)
Exhaust Fan \$195



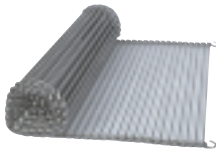
8622 (7000186)
Tensioner Assembly, 2-pk..... \$87



8627 (2100323)
Adjustment Knob \$16



8628 (210K230)
Leg Kit, 4-pack \$17



CONVEYOR CHAIN

8610 (7001311)
Crown (Complete) \$117

8611 (73001310)
Heel (Complete) \$117



8624 (7001598)
Slide Rail Kit 2-pk (Long) \$53



8633 (7001600)
Wear Strip (Short), 2-pk \$44



TOASTER PARTS

Antunes Round-Up **BKT-2V**



See PTFE Disclosure on p. 15

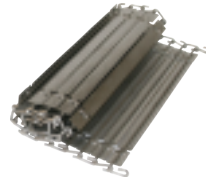
BLACK/SILVER TOASTER SHEET

(12-1/4" X 33")

- 8216 Each **\$11.50**
- 8216-03 3-pack **\$31.00**
- 8216-10 10-pack **\$92.00**
- 8216-Roll 12-1/4" x 108ft. Continuous Roll **\$359**
(equal to 39 sheets)



- 6938 (7001985) Rear Conveyor Cover..... **\$187**
- 6939 (7001986) Front Conveyor Cover..... **\$187**



- 6900 (7001966) Conveyer Belt Kit..... **\$199**



- 6941 (7001991) Bun Feeder..... **\$162**



- 6940 (7001982) Support Rod Kit..... **\$13**



- 6907 (7001970) Drive Shaft w/28T Conveyor Sprockets..... **\$139**

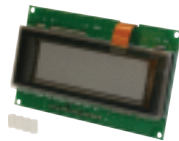


- 6910 (7001976) Cam Shaft **\$19**

- 6908 (7001971) Idler Shaft w/28T Conveyor Sprockets..... **\$129**



- 6924 (7001965) Control Label..... **\$36**



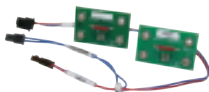
- 6925 (7001958) Display Board Kit..... **\$379**



- 6926 (7001961) Display Cover..... **\$7**



- 6927 (7001957) Main Board..... **\$535**



- 6928 (7002045/7001964) Door Sensor Board Kit..... **\$64**



- 6922 (7001293) Thermocouple, Type K..... **\$55**

TOASTER PARTS

Antunes Round-Up **BKT-2V**



6901 (7000500)
Drive Motor..... **\$519**



6902 (7001977)
Motor Sprocket, 20T..... **\$42**



6903 (7001978)
Drive Sprocket, 12T..... **\$24**



6904 (7002034/0510017)
Tensioner Bracket Kit..... **\$59**



6905 (7002361/7001981)
Idle Sprocket Assy..... **\$192**



6906 (7001969)
Drive Chain (Complete)..... **\$44**



6923 (7001959)
Motor Board..... **\$217**



6920 (7002455/0509113)
Motor Mount Bracket Kit..... **\$104**



6921 (0509365)
Motor Mounting Bracket..... **\$82**



6929 (7001143)
Solid State Relay..... **\$103**



6930 (7001527)
Capacitor, Motor Run **\$15**



6931 (7001528)
Varistor Board **\$37**



6934 (7001144)
Hi-Limit Thermostat, 700F..... **\$162**



6935 (7001609)
Terminal Block, S-Series **\$18**

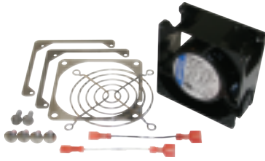


6936 (7001960)
Capacitor **\$48**



TOASTER PARTS

Antunes Round-Up **BKT-2V**



6932 (7001440/7000913)
Fan Replacement Kit, 230VAC..... **\$195**



6933 (7001968)
Fan Baffle..... **\$79**



6909 (7001975)
Cam Compression R/L..... **\$29**



6910 (7001976)
Cam Shaft..... **\$19**



6911 (7001987)
Compression Spring..... 2-pack **\$6**



6912 (7001973)
Plate Tensioner..... **\$8**



6913 (0601158)
Roller Tension Spring **\$4**



6914 (7001033)
Bearing 4-pack **\$69**



6917 (7001980)
Idle Bearing Retainer..... **\$20**



6918 (7001972)
Spring Guide LH/RH..... **\$29**



6919 (7001979)
Drive Bearing Retainer..... **\$8**



6937 (7001962)
USB Cable..... **\$96**



6942 (7001016)
Power Cord, Twist Lock
L6-30P..... **\$265**



6943 (7001324)
Knob **\$16**

TOASTER PARTS

Prince Castle TX Series



See PTFE Disclosure on p. 15

TOASTER SHEET (12-3/4" X 34-1/4")

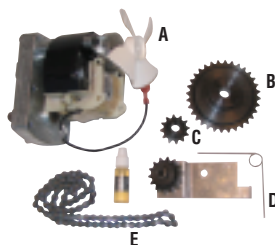
- 8218 Each **\$21**
- 8218-03 3-pack **\$57**
- 8218-10 10-pack **\$168 Best Value!**



CONVEYOR BELT

- 8218-W 1-pack **\$99**

A	8800	Drive Motor Only (87-037S)	\$374
B	8801	Motor Drive Sprocket, 32T (537-348S)	\$99
C	8802	Conveyor Sprocket, 12T	\$19
D	8803	Idler Kit (537-735S) (includes Sprocket, Spring and Bracket)	\$259
E	8821	#25 Chain 79 Pitch With Connector Link (537-728S)	\$10



8804 (537-378S)
Sheet Retainer Bars **\$81**

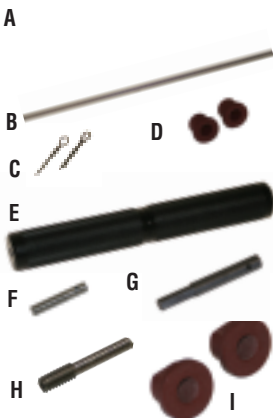


8805 (70-050)
Bun Adjustment Knob **\$61**



8816 (537-330S)
Conveyor Assembly **\$634**

Conveyor Assembly component parts also sold separately:



A	8814	Upper Roller (537-411S)	\$209
B	8813	Shaft for Upper Roller (537-315)	\$43
C	8813-1	Cotter Pins for Upper Shaft, 2-pk (86-272S)	\$9
D	8815	Upper Bearing Kit, 2-pk (537-317S)	\$114
E	8810	Lower Roller (537-412S)	\$209
F	8809	Lower Shaft, Short (537-318S)	\$51
G	8808	Lower Shaft, Long (537-316S)	\$51
H	8807	Gear Pin (197-279S)	\$35
I	8811	Lower Bearing Kit, 2-pk (537-370S)	\$199

Prince Castle TX Series parts continued on p. 22

TOASTER PARTS

Prince Castle TX Series & Other

PRINCE CASTLE TX SERIES (CON'T)



8817 (65-058)
Relay Switch.....\$93
Thermal Compound Included



8818 (537-400S)
Temperature Probe.....\$373
Thermal Compound Included



8820 (526-391S)
Hi Limit Control.....\$152

PRINCE CASTLE 197/297 SERIES



*See PTFE
Disclosure
on p. 15*

TOASTER SHEET (16-1/2" X 20")

8219	Each	\$12	
8219-06	6-pack	\$57	20% Savings
8219-12	12-pack	\$99	30% Savings
8219-Roll	108 ft. continuous roll	\$440	40% Savings



8500 (87-29S)
Motor\$277

**We carry other parts for the
197/297 Series**

Visit www.dmiparts.com or
call **1-800-238-5384** for availability

MARSHALL AIR HST13



*See PTFE
Disclosure
on p. 15*

TOASTER SHEET (14" X 30")

8207	Each	\$11
8207-Roll		\$355
108 ft. continuous roll		



CONVEYOR BELT

8207-F Front.....	\$199
8207-B Back.....	\$199



See PTFE Disclosure on p. 15

BRONZE TOASTER SHEET

(14-3/4" X 27-1/2", 3 MIL)

- 8214 Each **\$10.50**
- 8214-06 6-pack **\$49**
- 8214-12 12-pack **\$88**
- 8214-ROLL 108ft. Roll **\$320**



See PTFE Disclosure on p. 15

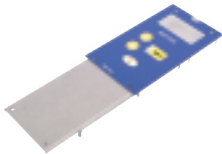
TAN TOASTER SHEET

(14-3/4" X 27-1/2", 5 MIL)

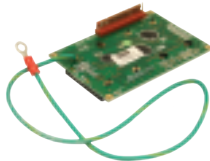
- 6822 Each **\$13**
- 6822-06 6-pack **\$62**
- 6822-12 12-pack **\$109**



- 6800 (526-025S) Motor Kit **\$623**



- 6801 (526-073S) Membrane Switch w/ Overlay **\$179**



- 6802 (526-021S) Display Board **\$74**



- 6803 (525-106S) Main Board **\$687**



- 6804 (85-144-24S) Power Supply Board **\$467**



- 6806 (65-058S) Solid State Relay, 50 Amp **\$94**



- 6807 (65-064S) Power Relay **\$73**



- 6515 (78-184S) Rocker Switch **\$23**



- 6808 (526-022S) Probe **\$143**



- 8820 (526-391S) Hi Limit Control **\$152**



6815 (526-289S)
Drive Train Assembly \$732



6812 (526-101S)
Tensioner Assembly..... \$147



6813 (86-558S)
Tensioner Spring \$21



8821 (537-728S)
#25 Chain \$10



6809 (526-392S)
Idle Sprocket, Each \$43



6814 (526-081)
Motor/Drive Sprocket, Each \$149



8807 (197-279S)
Gear Pin, Each \$35



6811 (526-710S)
Gear Kit, 2-pk \$277



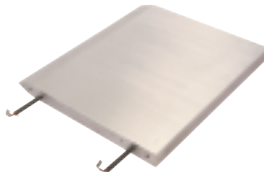
6818 (526-032S)
Handle, Each..... \$14



6817 (526-221S)
Knob Kit, 2-pk..... \$31



6816 (526-023S)
Fan Kit, 2-pk..... \$153



6819 (526-627S)
Platen \$1028



6821 (526-184S)
Major Side Overlay..... \$22

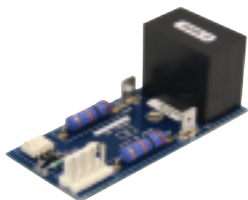
6820 (526-185S)
Minor Side Overlay..... \$22



8663 (7000833)
Control Board\$239



8664 (1001425)
Label for Control Board\$22



8670 (7000391)
A/C Isolator Board\$64



8667 (0700552)
Power Cord\$59



8612 (7000882)
On-Off Rocker Switch\$18



8660 (7001338)
Timer Pushbutton Switch\$45



8661 (210K122)
Leg Kit, 4-pk\$49



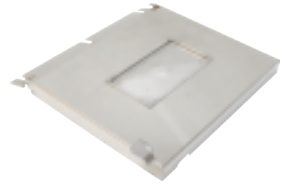
8662 (210K108)
Tip, Rubber Feet, 4-pk\$14

EGG COOKER PARTS

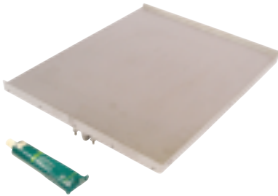
Antunes Round-Up ES-1200



8672 (7001515)
Egg Rack, 12 Portion\$399



8675 (7001514)
Cover\$359



8673 (7000674)
Platen\$899



8674 (2180259)
Scrap Pan.....\$74



8625 (7000810 / 4050214)
Platen Thermocouple\$49



8665 (7001145 / 4010187)
Transformer, 240V\$41



8666 (040K251)
Strain Relief Kit.....\$18



8668 (7000272)
Hi Limit Thermostat\$162



8669 (7000370)
Solid State Relay.....\$89



8671 (7000136)
Terminal Block.....\$20

OVEN MITTS



8335
Tucker QuickClean™ Oven Mitt,
15" Length, 450°F\$33 ea



8344
Tucker Puppet Mitt, Nomex® with
VaporGuard™ and Kevlar Palm
15" Length, 900°F.....\$47 ea



8354
Oven Mitt, 17" Length.....\$9 ea

BROILER MITTS



8353
Tucker Three-Finger QuickClean™
Gloves, Poly Cotton with Kevlar
Hand, 18" Length, 650°F.....\$99/pr.



8355
Broiler Mitts, Neoprene Coated,
Heavy Duty Insulated,
17" Length, 350°F\$34/pr.

FRYER GLOVES



Tucker QuickClean™ Fryer Gloves
20" Length, 300°F\$33/pr.

- 8330-M** Size Medium
- 8330-L** Size Large
- 8330-XL** Size X-Large



8356
Fryer Gloves, Neoprene Coated,
Heavy Duty Insulated,
17" Length, 350°F\$34/pr.



8356-31
Fryer Gloves, Neoprene Coated,
Heavy Duty Insulated,
21" Length, 350°F\$49/pr.

SAFETY APPAREL

CUT RESISTANT GLOVES



SAFETY TIP

Remember to inspect your safety apparel on a regular basis and replace as needed to keep your employees safe!



Tucker Red Glove\$21 ea

8405-S Small
8405-M Medium
8405-L Large

White/Blue Glove.....\$18 ea

8404-S Small
8404-M Medium
8404-L Large

UTILITY WORK GLOVES



Tucker Cut-Resistant
 Freezer Gloves.....\$14/pr

8406-M Medium
8406-L Large
8406-XL X-Large

- Synthetic knit shell creates high level of flexibility & dexterity
- Palm coating withstands exposure from liquids
- Brush fleece lining provides thermal properties



Tucker Cut-Resistant
 Stocking Gloves.....\$16/pr

8407-M Medium
8407-L Large
8407-XL X-Large

- Provides a good balance of comfort, dexterity & cut resistance
- Palm coating provides excellent grip & tactility



Search for parts
and place
orders online

www.dmiparts.com



8413
Infrared Forehead Thermometer.....**\$59**

- Fast Reading (Approx. 1 second)
- Runs on 2 AAA Batteries (included)
- Memory for last 25 readings



8333
Tucker QuickClean™ Apron,
36"**\$44**



8361 Apron,
Heavy Duty PVC,
35" x 45"**\$19**



8362 Face Shield (w/visor), w/Deluxe
Adjustment.....**\$28**

8362-1 Replacement
Visor Only, 8" x 15-1/2"**\$10**



8364
Tucker QuickClean™
ShinGuards™**\$59**



10" Hi-Top Boots
8363 Size Large**\$54**
8363-XL Size X-Large**\$54**



8403
Wall Mount for Vinyl PVC
Gloves**\$15**
(Hardware included)

MAINTENANCE



10000-B
Looped Mop Head, Blue\$9



10000-R
Looped Mop Head, Red\$9

10003
Mop Handle,
54"\$9



10004
Wringer, Green / Red \$53



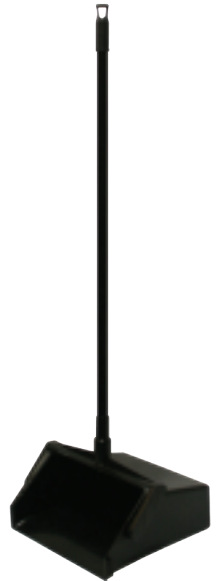
10005
Wringer, Blue / Yellow..... \$53



10006-B
Mop Bucket, Blue, 26 Qt..... \$52



10006-R
Mop Bucket, Red, 26 Qt..... \$52



10015
Lobby Dust Pan w/ Handle..... \$12



10010-B
Angled Broom Head, Blue.....\$9



10010-G
Angled Broom Head, Green.....\$9



10010-R
Angled Broom Head, Red.....\$9



10011
Broom Handle, 48".....\$9



10025
Tool Holder.....\$11



10020
Restroom Caddy, Yellow.....\$10



10021
Toilet Brush, Yellow.....\$7

HAND BRUSHES



10018-B
Blue.....\$4



10018-R
Red.....\$4



10018-W
White.....\$4



10018-Y
Yellow.....\$4



10507
Viper® Pro Multi-Purpose Safety
Cutter, Hi-Vis Yellow **6-pk \$19**



10508
Viper® Pro Bag Opener,
Safety Orange **6-pk \$16**



10509
X-tra Safe® Disposable Utility
Knife, Yellow **6-pk \$25**



8574
Pouchmate Pouch Opener **\$4**



8575
Bucket Opener, Plastic **\$14**



8576
Safety Box Cutter **\$4**



8455
Red Sani-Pail, 6 Qt. **\$5.50**



8456
Blue Sani-Pail, 6 Qt. **\$5.50**



9013
Scouring Pad, Green, Medium Duty,
6" x 9" **Box of 20 \$19**



8562 No Slip Magnetic
Doorstop **\$8**



8564 Table Wobble
Stopper **6-pk \$5**



4900 Silver King
Door Gasket, 27" x 28" **\$132**
(SKTTR7F Fridge/
SKUCF7F Freezer)

CEILING TILE PROTECTOR



Keeping your ceiling tiles clean has never been easier!

- The Ceiling Tile Protector shown here is black for illustration purposes only. It is clear and nearly invisible.
- Fast and easy installation.
- Reduces ceiling maintenance costs.
- National Sanitation Foundation (NSF) tested.
- Fits all standard diffusers (24" x 24")

8577each **\$35**

8577-05 5-pack **\$149**

SCOTCH-BRITE™ FRYER & KITCHEN CLEANING TOOL

8373

Starter Set (Includes 1 Tool, Each of 3 Interchangeable Cleaning Pads **\$62**

3 Powerful Positions



Acute Position
POWER SCRUBBING



Extended Position
LONGER REACH



Right Position
HARD SPOTS

INTERCHANGEABLE CLEANING PADS FOR #8373 TOOL

Can be used wet or dry at temperatures up to 350°F



8373-1

Gray Heavy Duty Pads..6-pk **\$23**



8373-2

Green Medium Duty Pads..6-pk **\$23**



8373-3

Blue Low Scratch Pads..6-pk **\$23**

Thousands of loyal customers agree:

DMI's convenient **AUTOSHIP PROGRAM** can't be beat!

- 1 Choose any quantity & combination of items found in our catalog. The most popular Autoship items are:

**Toaster Sheets & Conveyor Belts, Safety Apparel,
Gycor Filter Pads, Taylor Blades, Brush Kits & Tune-Up Kits**

- 2 Choose frequency of Autoship:

Monthly, Bi-Monthly, Quarterly, or Semi-Annually

DMI is proud to offer Frymaster replacement parts!

FOR FRYMASTER MJ45 AND H50 UNITS



6000 (806-4206)
Temperature Probe
Assembly.....\$218



6001 (210-0681)
Probe Guard.....\$22



6002 (826-1177)
Hi-Limit Thermostat.....\$189



6003 (807-6084)
Heat Relay, 12V.....\$39



6004 (806-3660)
Sound Device High Output.....\$48



6005 (807-2103)
Drain Valve Switch.....\$18



6006 (807-4978)
Dual Voltage Transformer...\$110



6007 (826-3191)
Filter Pump/Gasket Kit.....\$509

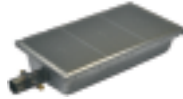


6008 (826-1712)
Filter Pump Motor.....\$699

FOR FRYMASTER H50 UNITS ONLY



6100 (826-0981)
Igniter with Gasket, Nat.....**\$148**



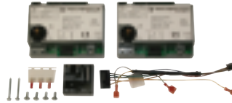
6101 (826-1072)
Universal Burner, Nat/LP.. ... **\$520**



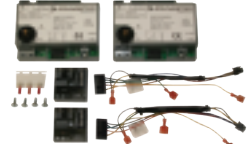
6112 (826-0931)
Burner Insulation Kit
for #6101..... **\$146**



6105 (826-2024)
Ignition Cable..... **\$54**



6114 (826-3668)
Full Vat Fenwall Ignition
Module Conversion Kit..... **\$399**



6116 (826-3669)
Duel Vat Fenwall Ignition
Module Conversion Kit..... **\$499**



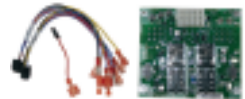
GAS VALVES

6106 (826-1122)
Honeywell, Nat.....**\$205**

6107 (826-1120)
Conversion Kit,
RS to Honeywell, Nat.....**\$273**



6108 (106-2994SP)
Blower Assembly**\$363**



6109 (826-2264)
Interface Board.....**\$306**



6110 (810-0403)
Burner Orifice, Nat, O-4000 ft. **\$29**



6111 (807-3843)
Fuse, 3 Amp, 250V.....**\$10**

FOR FRYMASTER MJ45 UNITS ONLY



6050 (806-0184)
Operating Thermostat**\$399**



6051 (810-1873)
Thermopile with Push-on
Terminal.....**\$93**



6052 (810-0617)
Thermopile with
Coaxial End**\$139**



6054 (807-3294)
Gas Valve, Honeywell,
Nat, 24V**\$318**



6055 (807-2427)
Gas Valve, Honeywell, Nat,
Millivolt.....**\$318**



6053 (810-0426)
Pilot, Nat.....**\$88**



6056 (826-1596)
Gas Valve Conversion Kit,
RS to Honeywell, Nat.....**\$429**



6057 (806-3548/826-2574)
Interface Board.....**\$429**

*Don't see the Frymaster parts you need?
Call us at 1-800-238-5384 for pricing & availability of other items.*



FRY BASKETS

8369 Green Handle
12"L x 6"W x 5-3/8"H.....**\$29**

8387 Blue Handle
13"L x 5-1/2"W x 5-1/2"H**\$31**

FRY BASKETS W/ LID & DIVIDERS

8389 Yellow Handle, 5 slot
12-1/2"L x 6-3/8"W x 3-1/2"H ...**\$31**

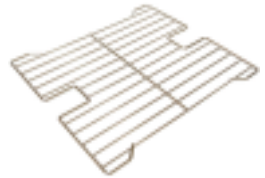
8369-4 Blue Handle, 10 slot
12-1/2"L x 6-1/8"W x 4"H**\$29**



8369-3 Fry Basket Submerger
(for use with #8369) **\$24**



8369-1 Fry Basket Insert
(for use with #8369 or #8387)..... **\$38**



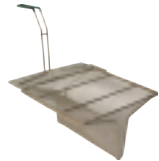
8388 Fry Basket Support Rack
(fits Frymaster MJ45 & H50)..... **\$109**

SEDIMENT TRAYS

- Fits beneath your fry baskets to catch crumbs and sediment.
- Can be removed quickly and easily for cleaning.
- Helps to lengthen the life of your oil.



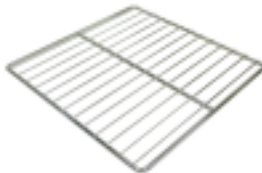
8370
14"L x 12.5"W X 6.5"H.....**\$85**
Fits Most Frymaster Gas Fryers



8372
13.25"L x 11.75"W X 6.5"H.....**\$115**
Fits Most OCF/GL Gas Fryers



5201
Pitco Basket Support Rack, Twin
13-1/2"L x 6"W **\$155**



5202
Pitco Basket Support Rack, Full
13-1/2"L x 13-1/2"W **\$155**



5203
Pitco Basket Support Rack
13-1/2"L x 17-1/2"W **\$155**

SHORTENING SHUTTLE®



- **STOPS HOT OIL BUCKET BURNS!**
- **SAVES 30-50%** on labor costs and lowers your liability exposure

Shortening Shuttle® **\$739**

DMI Part #	8368	8368-S
Model #	SS-611-T	SS-611-TL
Capacity	80 Lbs. / 10.5 Gal.	60 Lbs. / 9 Gal.
Min. Fryer Drain Hgt.	11.5 in.	9.9 in.
Max. Waste Cont. Hgt.	49.5 in.	49.5 in.
Overall Dimensions	12"W x 12"H x 58"L	12"W x 10"H x



8368-1 Wall Hook **\$18**



8368-2 Top Handle **\$29**
8368-3 Wheel Handle **\$29**



8368-4 Single Wheel **\$47**

Manufactured by Worcester Industrial Products, Worcester, MA.



8247-1 Super Swivel,
1" NPT **\$169**



GAS HOSE, 1" NPT
8244 36" Length **\$189**
8244-48 48" Length **\$219**



8246-1 Quick Disconnect,
1" NPT **\$89**



8369-2 Universal
Fry Basket Hanger **\$119**



8378 Fryer Drain
Extension Pipe **\$65**



8378-1 Vat Cover,
Frymaster Gas..... **\$79**

FRY BAGGING SCOOPS



8371
Plastic, Dual Handle..... **\$19**



8371-1
Plastic, Right Hand..... **\$19**

8371-2
Plastic, Left Hand..... **\$19**



8371-DH
Metal, Dual Handle..... **\$19**



8371-RH
Metal, Right Hand..... **\$19**

8371-LH
Metal, Left Hand..... **\$19**



5634 Grate Comb for
Forced Air Fry Station **\$10**



8371-OR
Onion Ring Scoop **\$30**



8379
Fry Waste Bucket..... **\$19**

ACCUSALT SHAKER



8440 AccuSalt Shaker with
6.5 g Gray Insert Cover..... **\$59**



8440-3
Insert Container..... **\$12**



8439 AccuSalt Shaker with
3.7 g Black Insert Cover..... **\$59**



8440-1
Amber End Cap..... **\$12**



8440-4
Body Only..... **\$34**



8439-1
Black End Cap..... **\$16**

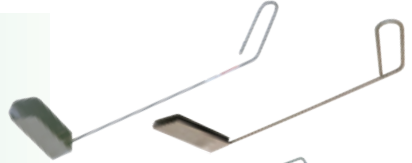


8440-2
Gray Insert Cover, 6.5 g..... **\$12**



8439-2
Black Insert Cover, 3.7 g..... **\$11**

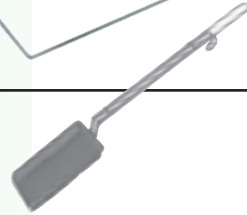
Fryer Cleaning Scoop

8374 Frymaster (23" length)..... \$64**5204 Pitco (19" length)..... \$49**

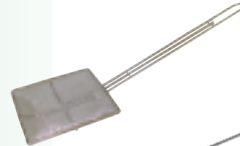
Fryer Cleaning J-Rod

8374-1 Frymaster (29" length)\$15**5200 Pitco (21" length)\$79****8374-2**Fryer Skimmer, Rectangular **\$19**

(20" length, 4" width)

**8374-2A**Fryer Skimmer, Square **\$14**

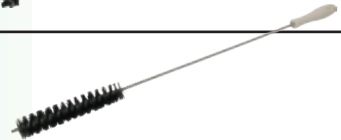
(19-1/2" length, 6-1/2" width)

**8374-3**Fryer Brush, Right Angle **\$14**

(21" length)

**8374-4**Fryer Brush, Straight **\$12**

(23" length)

**8430**Ice/Shortening Scoop, 58 oz. **\$25**

(14-1/2" length)

**8432**Shortening Ladle, 32 oz. **\$25**

(19" length)





8367
Shortening Saver..... **\$165**
• Fits on top of standard 5 gal. pail
• Keeps crumbs out of fryers/multipots



8376
Shortening Test Kit..... **\$16**
8376-D
Dropper Only..... **\$6**



5549
Vito® 50/80 Filters,
Box of 100..... **\$219**



5535
Plain Paper Filters, 16.5" x 25"
Case of 100..... **\$59**



5550
Plain Paper Envelopes w/ Center Hole
through one side, 19" x 20.5"
Case of 100..... **\$146**

STAINLESS STEEL HOOD FILTERS



Part #	Trade Size	Actual Dimensions	Price
	H x W	H x W x D	
8380-S	10 x 16	9-5/8 x 15-5/8 x 1-7/8	\$42
8381-S	10 x 20	9-5/8 x 19-5/8 x 1-3/4	\$42
8382-S	16 x 16	15-5/8 x 15-5/8 x 1-3/4	\$48
8383-S	16 x 20	15-3/4 x 19-5/8 x 1-3/4	\$54
8385-S	20 X 16	19-5/8 x 15-3/4 x 1-3/4	\$54
8384-S	20 x 20	19-5/8 x 19-5/8 x 1-3/4	\$58

ORDERING TIPS

- Please order with the **Height (H)** dimension first and the **Width (W)** dimension second
- Filters should always be installed with the baffles running in the Vertical (top to bottom) position

- **LENGTHENS OIL LIFE** - Clarifies, brightens & freshens shortening more effectively than competitive products.
- **IMPROVES FOOD QUALITY** - Less oil absorbed into food.
- **SPECIAL INGREDIENT** - FRI-MOR™ filter powder (in the pad) chemically alters the oil to remove impurities.
- **CONVENIENT** - Compact 30-day packaging. Easy to store and easy to monitor frequency of shortening filtration.
- **SAVES MONEY** - Less add-back in fryers reduces excessive top-off with the more expensive oil.

ENVELOPES			
DMI# (Gycor #)	Dimensions	Description	Price per Case of 30
5506 (ESA-149)	16" x 16" 1.125" Center Hole (through one side)	Filter Screen Adapter	\$74
5509 (ESA-126)	13.75" x 20.375" 1.50" Center Hole (through one side)	Filter Screen Adapter	\$73
5516 (ESA-154)	11" x 19" 0.75" Side Hole (through both sides)	Filter Screen Adapter	\$66
5520 (ESA-103)	16.75" x 22.5" 0.6875" Side Hole (through one side)	Filter Screen Adapter	\$95
5525 (ESA-161)	17.5" x 21" 1.50" Side Hole (through one side)	Filter Screen Adapter	\$89
5511 (ESA-124)	13" x 13" No Hole	F.A.S.T. Portable (No retrofit)	\$58
5515 (CH-1630)	14" x 15" 0.875" Center Hole (through both sides)	F.A.S.T. Portable (retrofit w/center stand pipe)	\$51
5507 (ESA-153)	11" x 20" 0.75" Center Hole (through both sides)	Low Boy (J50S) Portable	\$67
5522 (ESA-169)	11" x 20" 1.5" Center Hole (through one side)	Low Boy (J50SA), Frontline Portable	\$67
5508 (ESA-129)	19" x 20.5" 1.375" Center Hole (through one side)	Pitco Built-In	\$93
5527 (ESA-105)	14.25" x 22.5" 1.5" Off-Center Hole (through one side)	Henny Penny Built-In	\$81
5528 (ESA-156)	23" x 32" 1.5" Side Hole (through one side)	UltraFryer	\$131



See page 41 for
Vito® and Plain
Paper Filters.



AUTOSHIP PROGRAM

All Gycor products can be set up for DMI's convenient Autoship Program. Call **1-800-238-5384** today. Never worry about forgetting to order again!



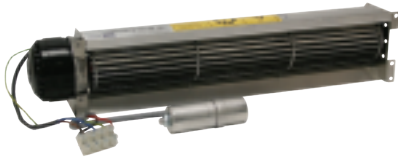
SHEETS

DMI# (Gycor#)	Dimensions	Description	Price Per Case of 30
5500 (SSA-140)	14.5" x 21.75"	Frymaster FP3 & Pro Series Built-In	\$45
5501 (SSA-109)	12.5" x 21.5"	Frymaster FP1, FP2, FM2 Built-In	\$41
5503 (SSA-108)	12.5" x 18"	Frymaster FM1 Built-In	\$37
5517 (SSA-115)	14.1875" x 29.1875"	Frymaster Built-In	\$44
5524 (SSA-1504)	11.25" x 19.125" Thicker Grade *	Frymaster OCF Pitco ROV / SSHLV	\$46
5505 (SSA-117)	16.375" x 24.375"	Dean / Frymaster Built-In	\$52
5510 (SSA-116)	16.375" x 18.375"	Dean / Frymaster Portable	\$43
5526 (ESA-1164)	16.375" x 18.375" Thicker Grade *	Dean / Frymaster Portable	\$58
5504 (SSA-125)	9.625" x 15"	Filtercorp Adapter F-16	\$46
5504-1 (G-100)		Gasket for use with F-16 Pads	ea. \$24
5523 (SSA-170)	12.5" x 15"	Filtercorp Adapter F-40	\$49
5523-1 (G-200)		Gasket for use with F-40 Pads	ea. \$30
5502 (SSA-150)	11.25" x 19.125"	Pitco SGH50 & AG14S Built-In	\$37
5512 (SSA-113)	13.5" x 24"	Pitco Portable P14	\$44
5519 (SSA-135)	17.5" x 28"	Pitco / Dar Pro Portable P18, P24, P34	\$57
5518 (SSA-168)	18" x 25"	RTI System	\$53

* Thicker Grade Pads are made from a heavier material for a faster flow rate.

CIRCLES

5513 (CSA-134)	21.875" Diam. No Hole	Renu Portable	\$61
5514 (CSA-120)	21.875" Diam. 1.625" Center Hole	Prince Castle Portable	\$61



4606-LH
Complete Blower Module, Left Hand
For 36" Station.....\$629



4606-RH
Complete Blower Module, Right Hand
For 36" Station.....\$629



4610
On/Off Switch\$72



4611
Relay\$43



4614
Hi Limit Thermostat\$39



4612
Divider for 32" / 34" / 36" Stations.....\$79



4613
Filter Assembly for 36" Station.....\$299

Visit us online at
the NEW & improved
www.dmiparts.com
and see how simple it
is to search for parts
and place orders 24/7



SAFETY COATED – TEARDROP SHAPE



60 WATT COATED, 120V

8365..... \$8
 8365-06..... **\$43 6-pack**

INFRA-RED HEAT LAMP – CLEAR



375 WATT, 120V

8366..... \$12.50
 8366-06..... **\$66 6-pack**

375 WATT COATED, 120V

8366C..... \$24
 8366C-06..... **\$129 6-pack**

125 WATT, 120V

8395..... \$8
 8395-06..... **\$43 6-pack**

125 WATT COATED, 120V

8395C..... \$19
 8395C-06..... **\$103 6-pack**

250 WATT, 120V

8396..... \$8
 8396-06..... **\$43 6-pack**

250 WATT COATED, 120V

8396C..... \$24
 8396C-06..... **\$130 6-pack**

**SAVE 10% WHEN YOU PURCHASE
 BULBS IN A 6-PACK!**

SAFETY COATED – TRADITIONAL SHAPE



40 WATT COATED, 130V

8398..... \$6
 8398-06..... **\$32 6-pack**

60 WATT COATED, 130V

8399..... \$6
 8399-06..... **\$32 6-pack**

40 WATT COATED, 250V

8391..... \$9
 8391-06..... **\$49 6-pack**



**There are several
 convenient ways to
 place your order with DMI**



**Call Toll Free 1-800-238-5384
 weekdays 8:15 am to 5:00 pm**

Or order anytime:

Online: www.dmiparts.com

Email: orders@dmiparts.com

Toll Free Fax: 866-302-9397

VEGETABLE SLICERS

PRINCE CASTLE SABER KING

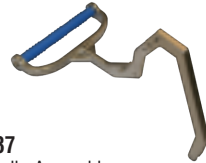


8530 Saber King Chassis\$875

- Save time and labor
- Slice 4 tomatoes at once
- Easy to use and clean
- Blade covers improve safety
- Interchangeable blade cartridges adds flexibility



8536
Cross Bar Assembly.....\$62



8537
Handle Assembly\$162



8538
Cartridge Lock.....\$31



8539
Replacement Leg...\$45



8540
Rubber Feet .. 4-pk \$38

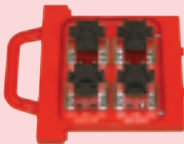


8541
Linkage Pin Pack....\$38

TOMATO



8531-1
Blade Cartridge, 1/4"\$408



8531-2
Pusher Cartridge, 1/4"\$289

ONION



8532-1
Blade Cartridge, 3/16"\$339



8532-2
Pusher Cartridge, 3/16"\$235

PRINCE CASTLE SABER KING MINI



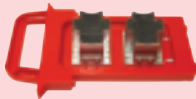
8525 Saber King Mini Chassis\$749

- 40% narrower and lighter weight than the Saber King
- Interchangeable blade cartridges adds flexibility
- Blade covers improve safety
- Save time and labor
- Easy to use and clean

TOMATO



8526-1
Blade Cartridge, 1/4"\$308



8526-2
Pusher Cartridge, 1/4"\$179

ONION



8527-1
Blade Cartridge, 3/16"\$308



8527-2
Pusher Cartridge, 3/16"\$219

DMI Manufacturing, Inc.
Cleveland, OH



When will your FedEx Ground shipment be scheduled for delivery?



**NORMAL
DELIVERY
SCHEDULE
IN DAYS**
(Next Day and
2nd Day Delivery
Also Available)



My team is dedicated to getting your orders shipped immediately so that you can keep your restaurants running smoothly.

-Jeremy, Warehouse Manager

PRINCE CASTLE TOMATO SABER 943 SERIES



8550 Slicer, 1/4" Blades included (9 Blades)..... **\$539**

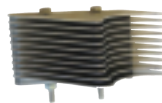
8550-H Slicer, 1/4" Blades included (11 Blades, High Yield)..... **\$539**

- Perma-Tight blade cartridge system never needs adjustment
- Tomato Catcher reduces clean-up and improves food safety



8550-1 Blade Set, 1/4" (9 Blades)..... **\$118**

8550-1H Blade Set, 1/4" (11 Blades, High Yield)..... **\$122**



8550-4 Pusher Head, 1/4" **\$85**

Works with both the 9 and 11 blade 1/4" sets.



8550-2
Catcher, Red Plastic..... **\$25**



8550-3
Pusher Handle, Red Plastic **\$39**



8550-6
Guide Rod Bearing..... **ea \$15**



8550-7
Guide Rod Cushions **4-pk \$26**



8550-5
Replacement Feet..... **4-pk \$15**

CUT RESISTANT GLOVES

Tucker Red Glove \$21 ea

8405-S Small

8405-M Medium

8405-L Large



White/Blue Glove \$18 ea

8404-S Small

8404-M Medium

8404-L Large



NEMCO EASY TOMATO SLICER



- 8556** (N56600-2) Slicer, 1/4" Blades.....**\$389**
- 8556-A** (N56600-1) Slicer, 3/16" Blades.....**\$389**

- Cleanly cut mounds of uniformly sliced tomatoes in seconds
- Razor sharp stainless steel blades
- Unique design provides long life



8556-1 Blade Set, 1/4" (10 Blades).....**\$49**
8556-1A Blade Set, 3/16" (13 Blades).....**\$49**



8556-4 Pusher Head, 1/4".....**\$149**
8556-4A Pusher Head, 3/16".....**\$149**

NEMCO EASY TOMATO SLICER II™



- 8557** (N56600-2) Slicer, 1/4" Blades.....**\$475**
- 8557-A** (N56600-1) Slicer, 3/16" Blades.....**\$475**

- No need to adjust the blades
- New Pretensioned blade cartridge maximizes safety and blade longevity
- Blades are razor sharp stainless steel for a smooth, precise cut



8557-1 Blade Set, 1/4" (11 Blades).....**\$89**
8557-1A Blade Set, 3/16" (14 Blades).....**\$89**



8557-4 Pusher Head, 1/4".....**\$159**
8557-4A Pusher Head, 3/16".....**\$179**



8902
 Foot Pad..... **\$4.00 ea**

We carry additional replacement parts for Nemco Slicers and Choppers.

Call 1-800-238-5384 for pricing and availability.

NEMCO EASY SLICER VEGETABLE CUTTER



8560 (N55200AN) Slicer, Adjustable Cut\$559

- Compact, portable, and easy to use
- Set the desired thickness by turning a thumb screw (calibrated in 1/16" increments to a maximum of 1/2")
- Mounting base (sold separately) attaches easily to countertops or other flat surfaces



8560-1
Blade Set, Adjustable Cut\$79



8563
Shaft Lock Assembly.....\$28



8561
Guard.....\$75



8565
Portable Base.....\$229

SLICER BLADE CLEANING BRUSHES



8549
3" Bristles \$32



8905
2" Bristles..... \$29



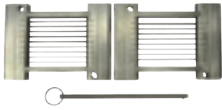
8907
4-1/2" Bristles...\$10



8551
Tomato Core-It\$4

See page 27 for Cut Resistant Gloves

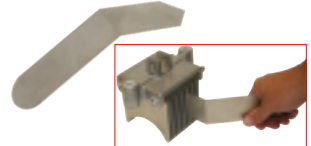
NEMCO EASY ONION SLICER



8922
Blade Set, 3/16",
(Includes Blade Pin)**\$155**



8925
Pusher Head, 3/16"**\$399**



8906
Pusher Head Cleaning Tool.. **\$15**



8923
Blade Pin**\$7**



8924
Pusher Plate**\$5**



8924-4
Pusher Head Screw**\$3**



FRONT & REAR LEGS

8900
Right Front/Left Rear**\$37**

8901
Left Front/Right Rear **\$37**

Choosing your replacement legs:
To determine if you need left or right & front or rear, face the slicer as if you are slicing the onion or lettuce.



8902
Replacement Foot Pad
(4 required)**\$4 ea.**



8908
Replacement
Spring**\$6**



8926
Lever/Handle**\$55**



8903
Ring Pin**\$10**



8924-1
Middle Spacer**\$2**



8924-2
End Spacer....**\$2**



8924-3
Red End Spacer**\$2**



8924-5
Hex Nut ... **\$2**



8924-6
Acorn Nut**\$2.50**



- Fast Reading (Approx. 1 second)
- Runs on 2 AAA Batteries (included)
- Memory for last 25 readings

8413

Infrared Forehead Thermometer \$59

? DID YOU KNOW ?

DMI has been family owned
and operated since 1997

We are known nation-wide
for our outstanding
customer service team!

ATKINS AQUATUFF™ 351 WRAP AND STOW SERIES DIGITAL THERMOMETER



8415-BP Thermometer with
Bell (Surface) Probe \$269



8415-NP Thermometer with
Needle Probe \$269

- **-100°F to 500°F**
- IPX7 Waterproof rated
- Auto shut-off
- 2 AAA Batteries included
- Wrap & Stow™ Probe can easily be replaced in the field without recalibration



8415-1 Bell (Surface)
Probe Only \$99



8415-2 Needle
Probe Only \$99



8415-3 Battery Cover \$19



8415-4 Thermocouple
Solid Simulator \$49

- The Solid Simulator simulates food product temperature in changing ambient conditions of any refrigerator, freezer or walk-in.
- The temperature of the Solid Simulator will display immediately when plugged into your Atkins 351 Series Digital Thermometer



8410 Pocket Thermometer, 1" Dial\$9
0°F to 220°F



8411 Pocket Thermometer, Digital w/Hold..... \$29
-58°F to 302°F



8409 Cooler Thermometer, Metal\$9
-20°F to 80°F

- Hangs or stands for easy installation
- HACCP Safe Zones



8409-1 Cooler Thermometer, Plastic..... \$4
-40°F to 120°F

- Space saving design
- HACCP Safe Zones

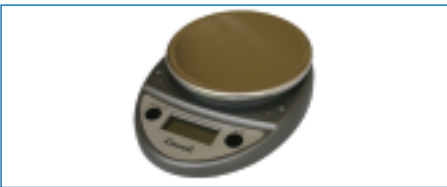


8416 Electronic Timer / Clock / Stopwatch \$29

- Counts up or down
- Memory recall
- Easel stand, wire hanger, clip-on or magnet mount



8419 Microwave Wattage Tester.....\$115



8418 Digital Portion Scale..... \$55

- Displays in Ounces, Pounds + Ounces, or Grams (Graduation 0.05 ounce)
- Automatic Shut-Off
- 2 AA batteries included
- 11 Lb. Capacity



8417 Mechanical Portion Scale..... \$49

- Contoured stainless steel platform holds bagged items: fries, tacos, shrimp
- Easy to read dial
- 16oz. Capacity (Graduation 0.25 ounce)
- Compact, space-saving design

TONGS



8420-BK
6" Plastic,
Black...\$2.75

8420-R
6" Plastic,
Red....\$2.75



8422-B
9" Plastic,
Blue...\$3.75

8422-R
9" Plastic,
Red....\$3.75

8422-G
9" Plastic,
Green..\$5.00



8423-R
12" Plastic, Red.....\$6



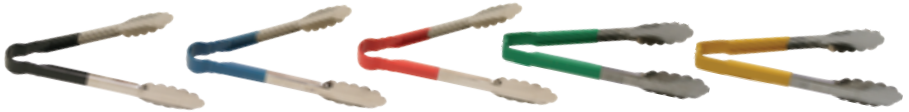
8424
9" Steel Lift N Grip\$11

8425
12" Steel Lift N Grip\$13



9009
9" Steel Scalloped.....\$11

9012
12" Steel Scalloped.....\$11



9" Metal with Plastic Coated Handle\$13.50

9009-BK Black

9009-B Blue

9009-R Red

9009-G Green

9009-Y Yellow



9050-BK
Refillable Grease Pencils,
Black, Box of 12.....\$14



9051-BK
Pencil Refills, Black,
Box of 72.....\$9



8426-BK Black Solid
Spoon, 1/4 oz. **\$3**



8427-G Green Solid
Spoon, 1/2 oz. **\$3**



8427-T Tan Solid
Spoon, 1/2 oz. **\$3**



8428-BR Brown Solid
Spoon, 3/4 oz. **\$3.50**



8428-R Red Solid
Spoon, 3/4 oz. **\$3.50**



8429-BR Brown Slotted
Spoon, 3/4 oz. **\$3.50**



9008 Red Portion
Cup, 2 oz. **\$7.75**



9003 Green Dishers,
3-1/4 oz., #12. **\$9**



9004 Yellow Dishers,
2 oz., #20. **\$10**



8551
Tomato Core-It **\$4**

STORE N' POUR



8482
Bottle, 1 Quart **\$4.50**



8484-KIT
Necks, Assorted Kit **12 pack \$48**



8483-KIT
Lids, Assorted Kit.... **12 pack \$29**



Neck (Limited Stock)each **\$4**
8484-BK Black **8484-W** White



Lid (Limited Stock)each **\$3**

8483-O Orange **8483-G** Green **8483-W** White **8483-BK** Black



8471
Lettuce Knife,
Green Plastic.....\$6



8472
Lettuce Knife,
Green Handle.....\$29



8433-W
10" Scalloped Knife,
White Handle.....\$14



8433-BK
10" Scalloped Knife,
Black Handle.....\$14



8470-G
Saf-T-Grip Cutting Board,
12" x 18" Green.....\$25



8470-W
Saf-T-Grip Cutting Board,
12" x 18" White.....\$25



8443
Saf-T-Grip Cutting Board,
6" x 9" White.....\$10



8442
Chicken Cutter/
Scoop.....\$18



9005
Wire Whisk, 12".....\$7



8434
Spatula/Sandwich Spreader,
Plastic.....\$2.50



8441
Amber Spatula.....\$9



8446
Brown Salad Crock with
Clear Lid, 1.2 qt.....\$10



8444
Clear Powdered Sugar
Shaker with Top.....\$6

ACCUSALT SHAKER



8440 AccuSalt Shaker with
6.5 g Gray Insert Cover..... **\$59**



8440-3
Insert Container..... **\$12**



8439 AccuSalt Shaker with
3.7 g Black Insert Cover..... **\$59**



8440-1
Amber End Cap..... **\$12**



8440-4
Body Only..... **\$34**



8439-1
Black End Cap..... **\$16**



8440-2
Gray Insert Cover, 6.5 g..... **\$12**



8439-2
Black Insert Cover, 3.7 g..... **\$11**

ACCUTASTE™ SEASONING DISPENSER



9022
AccuTaste™ Seasoning Dispenser , .35cc Gray Unit..... **\$53**

- Patented design provides accurate, repeatable and functional dispensing of a premeasured dose
- Hinged lid allows for easy refill
- Designed for easy cleaning without disassembly



9020-1
Lid Only **\$6**



9020-2
Body Subassembly..... **\$31**



9022-1 Gray Base
Subassembly, .35cc **\$21**



9020-3
Pin Only..... **\$2.50**



9020-4
Spring Only..... **\$8**



9020-5
Thumbscrew Only **\$2**

SQUEEZE BOTTLES

8436 Clear Squeeze Bottle with Clear Cap, 12 oz.....\$2.25

9007 Clear Squeeze Bottle with Clear Cap, 24 oz.....\$4.00



8435-C
Clear Cap Only
(small opening).... \$1.00



8435-B
Blue Cap Only
(large opening) ... \$2.00



8435-G
Green Cap Only
(large opening) ... \$1.00

8460-S FIFO Bottle with Green (Small) Valve Cap, 12oz \$2.50

8460-L FIFO Bottle with Blue (Large) Valve Cap, 12oz \$2.50



8464
White End/Label
Cap Only \$1.00



8465-S
Green (Small) Valve
Cap Only \$1.50



8465-L
Blue (Large)Valve
Cap Only \$1.50

8460-R Squeeze Bottle with Red Dispensing and End Caps, 12oz..... \$2.50



8464-R
Red End
Cap Only \$1.00



8465-R
Red Dispensing
Cap Only \$1.50

KETCHUP DISPENSER PARTS



8520 (83910)
Server Ketchup Pump
w/Locking Lid.....\$329



8522 (84031)
7 Quart Insert/Base for #8520 Server
Ketchup Pump\$49



8521 (82533)
Spare Parts Kit for #8520
Server Ketchup Pump..... \$19

8523 (82016)
Spring for #8520 Server
Ketchup Pump \$3



8480 Iced Coffee Mix Pitcher,
1/2 Gallon**\$10**



8481
Pitcher, 1 Gallon,
with Lid**\$13**



8473
Syrup Bottle, 32 oz.**\$2**



White Pump
for #8473
Syrup Bottle

8474-W 1 oz**\$4.00**
8475-W 1/2 oz**\$3.50**



8449
Stainless Steel Shake Cup..**\$7**



8491
Shake Mix Cup.....**\$14**



8492
Shake Mix Cup Inserts.....**\$11**



9014
Coffee Carafe, 1/2 gallon,
with Black Lid**\$51**



9014-1
Black Lid for 1/2 gallon
Carafe.....**\$16**



9014-2
Orange Lid for 1/2 gallon
Carafe.....**\$16**



5950
Funnel Assembly,
Coffee.....**\$89**



5951
Funnel Assembly,
Tea.....**\$23**



5952
Spray Head, White Plastic,
7 Hole.....**\$4**

ICEZONE®-X SANITATION SYSTEM



9030
IceZone X-30.....\$395

9030-B
Replacement UV Bulb.....\$85

- Keeps ice machines, ice bins, and beverage dispensers clean
- Prevents slime and mold
- Reduces bacteria, yeast and other microorganisms
- Reduces equipment cleanings and associated costs
- The only NSF certified sanitation
- Maintenance free - requires a simple annual UV lamp replacement
- Approved by all major ice machine manufacturers



Sample installation
NOTE: There are several mounting options



8450
Saf-T-Ice® Tote, 6 Gallon.....\$69

Use dedicated ice-only containers and utensils to keep ice protected, sanitary and your customers safe.

SAF-T-SCOOP® & GUARDIAN SYSTEM™



12-16 ounce
For Beverage Station:

8452
Guardian System™
(includes Scoop, Holder &
Mounting Tools).....\$69

8452-1
Replacement Scoop only\$31



64-86 ounce
For Ice Machines:

8453
Guardian System™
(includes Scoop, Holder &
Mounting Tools).....\$109

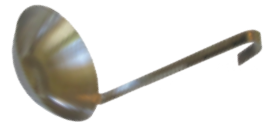
8453-1
Replacement Scoop only\$42



8430
Ice/Shortening Scoop,
Metal, 58 oz.
(14-1/2" length).....\$25



8431
Ice Scoop, Plastic, 12 oz.
(11-1/2" length).....\$8



8432
Shortening Ladle,
32 oz. (19" length).....\$25



BRUSH KITS



TUNE-UP KITS



BLADES

Model #	DMI #	OEM #	Description	Price
Taylor 490	5010	39465X	4-Piece Brush Kit	\$46
	5021	48398X	Tune Up Kit	\$19
	5032	84950	Plastic Blade, 3 Holes, ea.	\$17

Taylor 632	5010	39465X	4-Piece Brush Kit	\$46
	5025	33351X	Shake Side Tune Up Kit	\$18
	5026	49463-11X	Soft Serve Side Tune Up Kit	\$26
	5032	84950	Shake Side Blade, 3 Holes, ea.	\$17
	5034	35174	Soft Serve Side Blade, ea.	\$12

Taylor C707	5012	44127X	9-Piece Brush Kit	\$75
	5027	4946358X	Tune Up Kit	\$26
	5034	35174	Soft Serve Blade, ea.	\$12

Taylor C709	5012	44127X	9-Piece Brush Kit	\$75
	5028	49463-92	Tune Up Kit	\$43
	5034	35174	Soft Serve Blade, ea.	\$12



5000
Lubricant, Non-Heat Treat, 4 oz. **\$8**
(445, 490, 632, C707)



5001
Lubricant, Heat Treat, 4 oz. **\$13**
(C709)



8250-1A
Carbon Brush for
Motor, 1/4" x 1/4" **\$8 ea.**



5036-L
Stud Nut Top, Long **\$29**
(C707, C709)



5036-S
Stud Nut Bottom, Short **\$29**
(C707, C709)



5037
Stud Nut **\$25**
(632)



Pan



Flat Lid



Lid w/Handle



Drain Rack

Clear Pans - For Cold Food (-40°F to +210°F)

	Part #	Description	Price
FULL SIZE 20-7/8" x 12-3/4"	8751-2	Pan, 2-1/2" Deep	\$14.00
	8751-6	Pan, 6" Deep	\$23.00
	8751-HL	Pan Lid w/Handle	\$15.00
	8751-NL	Pan Lid w/Handle & Notch	\$16.00
	8751-1	Drain Rack	\$14.00
1/2 SIZE 10-7/16" x 12-3/4"	8752-2	Pan, 2-1/2" Deep	\$8.50
	8752-4	Pan, 4" Deep	\$10.00
	8752-6	Pan, 6" Deep	\$13.00
	8752-FL	Pan Lid - Flat	\$7.50
	8752-HL	Pan Lid w/Handle	\$7.50
	8752-1	Drain Rack	\$6.25
1/3 SIZE 6-15/16" x 12-3/4"	8753-2	Pan, 2-1/2" Deep	\$6.50
	8753-4	Pan, 4" Deep	\$9.00
	8753-6	Pan, 6" Deep	\$9.50
	8753-FL	Pan Lid - Flat	\$5.00
	8753-HL	Pan Lid w/Handle	\$5.00
	8753-1	Drain Rack	\$5.00
1/6 SIZE 6-3/8" x 6-15/16"	8756-2	Pan, 2-1/2" Deep	\$4.50
	8756-4	Pan, 4" Deep	\$5.00
	8756-6	Pan, 6" Deep	\$7.00
	8756-FL	Pan Lid - Flat	\$3.75
	8756-HL	Pan Lid w/Handle	\$4.25
	8756-NL	Pan Lid w/Handle & Notch	\$4.25
	8756-1	Drain Rack	\$2.25
1/9 SIZE 4-1/4" x 6-15/16"	8759-4	Pan, 4" Deep	\$6.00
	8759-FL	Pan Lid - Flat	\$4.00
	8759-NL	Pan Lid - Flat w/Notch	\$4.00
	8759-1	Drain Rack	\$2.00

Commonly Ordered Clear Food Pans:

8752-2

1/2 Size, 2-1/2" Deep:
Tomatoes

8752-4

1/2 Size, 4" Deep:
Lettuce

8753-4

1/3 Size, 4" Deep:
Pickles / Onions

8756-4

1/6 Size, 4" Deep:
Red Onions / Cheese



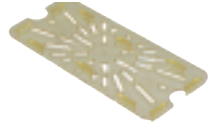
Pan



Lid w/Handle



Lid w/Handle & Notch



Drain Rack

Amber Pans - For Hot Food (-40°F to +300°F)

	Part #	Description	Price
FULL SIZE 20-7/8" x 12-3/4"	8741-6	Pan, 6" Deep	\$69.00
	8741-HL	Pan Lid w/Handle	\$37.00
1/2 SIZE 10-7/16" x 12-3/4"	8742-2	Pan, 2-1/2" Deep	\$22.00
	8742-6	Pan 6" Deep	\$38.00
	8742-HL	Pan Lid w/Handle	\$18.00
	8742-1	Drain Rack	\$13.00
1/3 SIZE 6-15/16" x 12-3/4"	8743-2	Pan, 2-1/2" Deep	\$19.00
	8743-4	Pan, 4" Deep	\$24.00
	8743-6	Pan, 6" Deep	\$33.00
	8743-HL	Pan Lid w/Handle	\$15.00
	8743-NL	Pan Lid w/Handle & Notch	\$15.00
	8743-1	Drain Rack	\$9.00
1/4 SIZE 6-3/8" x 10-7/16"	8744-4	Pan, 4" Deep	\$21.00
	8744-6	Pan, 6" Deep	\$26.00
	8744-HL	Pan Lid w/Handle	\$11.00
	8744-1	Drain Rack	\$10.00
1/6 SIZE 6-3/8" x 6-15/16"	8746-2	Pan, 2-1/2" Deep	\$13.50
	8746-4	Pan, 4" Deep	\$16.50
	8746-6	Pan, 6" Deep	\$19.00
	8746-HL	Pan Lid w/Handle	\$10.00
	8746-NL	Pan Lid w/Handle & Notch	\$10.00
	8746-1	Drain Rack	\$5.50
1/9 SIZE 4-1/4" x 6-15/16"	8749-2	Pan, 2-1/2" Deep	\$10.00
	8749-FL	Pan Lid - Flat	\$7.00

FOOD PANS



Pan



Lid w/Handle



Lid w/Handle & Notch



Drain Rack

Stainless Steel Pans

	Part#	Description	Price
1/2 SIZE 10.4" x 12.8"	8762-2	Pan, 2-1/2" Deep	\$15.00
	8762-4	Pan, 4" Deep	\$18.00
	8762-6	Pan, 6" Deep	\$24.00
	8762-HL	Pan Lid w/Handle	\$11.00
	8762-1	Drain Rack	\$22.00
1/3 SIZE 6.9" x 12.8"	8763-4	Pan, 4" Deep	\$16.00
	8763-6	Pan, 6" Deep	\$24.00
	8763-HL	Pan Lid w/Handle	\$10.00
	8763-NL	Pan Lid w/Handle & Notch	\$10.00
 8704 1/3 Size Wire Mesh Drain Rack.....	\$6.25	 8707 1/3 Size Stainless Steel Drain Rack.....	\$12.00
1/6 SIZE 6.4" x 7.0"	8766-4	Pan, 4" Deep	\$13.00
	8766-6	Pan, 6" Deep	\$16.00
	8766-HL	Pan Lid w/Handle	\$9.00
	8766-NL	Pan Lid w/Handle & Notch	\$9.00
	8766-1	Drain Rack	\$15.50
1/9 SIZE 4.3" x 6.9"	8769-4	Pan, 4" Deep	\$12.00
	8769-NL	Pan Lid w/Handle & Notch	\$8.00



8736-4
1/6 Size Pan, 4" Deep, Black . **\$15.50**
(6-3/8" x 6-15/16") (-40°F to +375°F)



Search for parts
and place
orders online

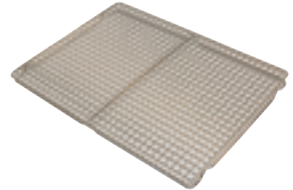
www.dmiparts.com



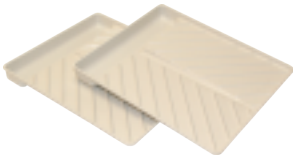
8446
Brown Salad Crock with
Clear Lid, 1.2qt. **\$9**



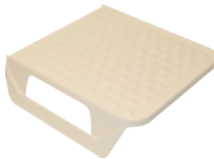
8495
1/2 Size Aluminum Baking Pan,
12-7/8" X 17-3/4" **\$18**



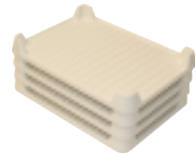
8496
1/2 Size Wire Pan Insert,
11-7/8" X 16-3/8" **\$28**



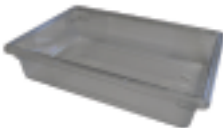
8437
Bacon Microwave Tray...**2-pack \$23**



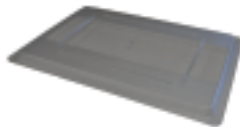
8437-1
Microwave Shelf for
Bacon Trays **\$21**



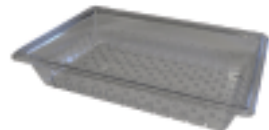
8438
Stackable Bacon Microwave
Trays..... **4-pack \$59**



8760
Lettuce Storage Box,
18" X 26" X 6" **\$43**

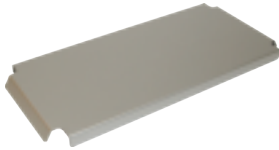


8760-FL
Lettuce Storage Box Lid,
18" X 26" **\$20**



8760-C
Lettuce Storage Box
Colander, 18" X 26" **\$33**

FOR PRINCE CASTLE EHB24 & EHB34 UNITS



6500 (540-1002S)
Lid.....\$29



6501 (540-1158S)
Latch Kit.....\$113



6502 (197-232S)
Feet.....4-pk \$25



6515 (78-184S) On/Off Rocker Switch,
Lighted.....\$23



6505 (540-1215S)
Overlay and Display.....\$129



6514 (72-674S)
Power Cord.....\$147



6503-M (510-098S)
Timer Bar, 8 CH, Main (Front).....\$689



6503-A (510-099S)
Timer Bar, 8 CH, Aux (Rear).....\$689



HEATER ASSEMBLIES, 4 WIDE

6512 (540-1222S) Top Shelf, Upper.....\$538

6513 (540-1224S) Top Shelf, Lower.....\$517

6510 (540-1226S) Lower Shelf, Upper.....\$544

6511 (540-1072S) Lower Shelf, Base.....\$544

FOR PRINCE CASTLE EHB24 UNITS



6507 (95-1819S)
USB Connector.....\$34



6508 (95-2011S)
Ethernet Connector.....\$95



6506 (540-1232S)
Control Board.....\$867



6509 (88-709-2-11S)
Speaker.....\$50



8730
Holding Unit Cleaning Brush.....\$31

FOR DUKE



4400
Duke HS2 Lid.....\$36



8706
Single Handle Pan, Amber..... each \$22



8708
Single Handle Pan, Black.....each \$22



8700
Dual Handle Pan, Amber 6-pack \$124



8735
Dual Handle Pan, Black 4-pack \$79

SPECIAL BULK DISCOUNT OFFER:

Place an order for Six 6-Packs of Amber
Single Handle Pans (36 pans) and **SAVE 10%!**
(price per 6-pack drops from \$124 to **\$111.60**)

SPECIAL BULK DISCOUNT OFFER:

Place an order for Six 4-Packs of Black
Dual Handle Pans (24 pans) and **SAVE 5%!**
(price per 4-pack drops from \$79 to **\$75.05**)

Spring Cleaning? DMI has what you need!



Mop Buckets



Mop Heads



Restroom
Caddy



Broom
Heads



Hand
Brushes

See pages 30-31 for
these items **AND MORE!**



Presort Std
U.S. Postage
PAID
Mentor, OH
Permit No. 238



1-800-238-5384
www.dmiparts.com

