

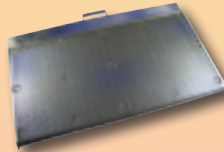


MANUFACTURING, INC.

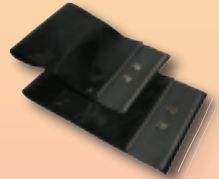
*2026
Spring
Catalog*

**Your Reliable Source For Equipment Parts
& Smallwares Since 1997**

Broiler Parts



Toaster Parts



Safety & Maintenance



Fryer Parts & Accessories



Vegetable Slicers



Smallwares & More!



1-800-238-5384

www.dmiparts.com

Fax: 1-866-302-9397



APR 2026

Table of Contents & Ordering Information

BROILER PARTS – Duke	3-8
BROILER PARTS – JF93 & JF94	9-10
BROILER PARTS – FH94	11-14
TOASTER PARTS	
Antunes Round-Up	15-20
Prince Castle	21-24
Marshall Air	22
EGG COOKER PARTS	25-26
MICROWAVE PARTS	27
SAFETY APPAREL	27-29
MAINTENANCE	30-33
FRYER ACCESSORIES & PARTS	
Frymaster MJ45 & H50	34-36
Fryer Tools & Accessories	37-41
Hood Filters	41
Gycor Filter Pads	41-43
Forced Air Fry Station	44
OTHER	
Bulbs	45
Vegetable Slicers	46-51
Thermometers, Scales & Timers	52-53
Smallwares	54-60
Shake & Soft Serve	61
Food Pans	62-65
Holding Units	66-67

Your Customer Service Team



Mark



Denise



Dennis



Julie



Celina



Alethea



- DMI is open from 8:15 am to 5:00 pm EST Mon-Fri. Your call will always be answered by a live customer service representative during business hours. Phone messages left after-hours will be returned on the next business day.
- There is no minimum order.
- All prices are subject to change. Check www.dmparts.com for the most current pricing.
- For ground shipment transit times, see map on page 47.
- Part numbers listed in green are for reference only.

Toll Free Phone Orders: 800-238-5384

Toll Free Fax Orders: 866-302-9397

Local Phone Orders: 440-975-8645

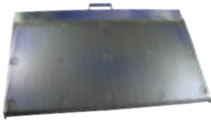
Local Fax Orders: 440-975-0688

Website Orders: www.dmparts.com

Email Orders: orders@dmparts.com

BROILER PARTS – DUKE

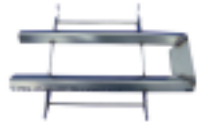
Covers, Pans & Panels



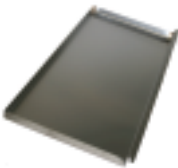
4000 (600222)
Flame Arrestor..... \$565



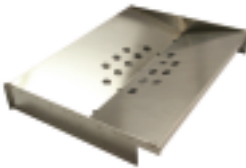
J Style Burner Tube
4008 (176370) Nat or LP Gas..... \$269
4010 (175950) High Altitude..... \$539



4012 (175200K)
Burner Shield..... \$403



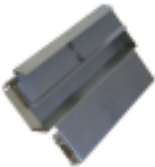
4002 (176398)
Main Grease Pan \$169



4004 (176397)
"V" Grease Pan \$341



4006 (175351F)
Lower J Burner Panel..... \$188



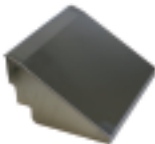
4016 (175150PS)
Pivot Ash Scraper..... \$259



4018 (175866PS)
Discharge Access Panel \$242



4020 (175340PS)
Discharge Chute..... \$394



4022 (175778WELD)
Discharge Hood..... \$195




4028 (175358PS)
Discharge Pan..... \$188



4026 (175357PS)
Side Grease Pan..... \$259

All prices are subject to change. Check www.dmiparts.com for the most current pricing.

 **WARNING: Attention CA Residents - www.P65Warnings.ca.gov**

ONLINE: www.dmiparts.com



4024 (175353PS)
Product Pan Shelf..... **\$139**



4029
Splash Shield..... **\$36**



4030 (175300)
Front Panel..... **\$257**



4032 (175741PS)
Loader Ramp..... **\$229**



4036 (175878PS)
Loader Mounting Bracket..... **\$485**



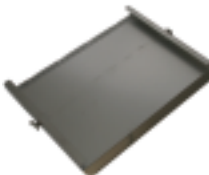
4034 (175429PS)
Door..... **\$95**



4047 (600407)
Air Brake..... **\$239**



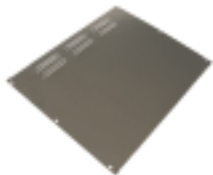
4038 (175444PS)
Loader..... **\$813**



4040 (175430PS)
Loader Tray..... **\$395**



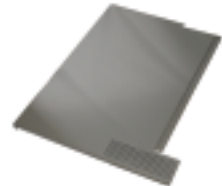
4046 (175226)
Impedance Pan (if no
optional catalyst)..... **\$155**



4042 (175383)
Electrical LWB Access Panel..... **\$83**



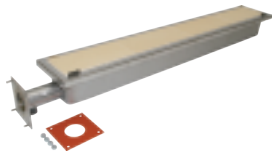
4044 (175392)
Right Side Upper Lift Off
Panel..... **\$57**



4050 (175305)
Rear Access Panel..... **\$279**

BROILER PARTS – DUKE

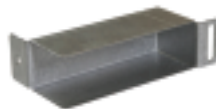
Top, Front & Electrical Components



4101 (176901)
Infrared Upper Burner **\$432**



4136 (175535)
Upper Burner Sensor **\$77**
Lower Burner Sensor on p. 8



4138 (175380)
Ignition Cable Shield **\$94**



4086 (175536)
Igniter..... **\$43**



4085 (175095)
Upper Igniter Guard..... **\$109**



4087 (175032)
Lower Igniter Shield..... **\$64**



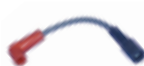
4068 (177830K)
Upper Burner Ignition
Module **\$318**



4070 (175537)
Upper Burner Ignition
Cable **\$17**



Lower Burner Ignition Module
4064 (175877) Nat Gas..... **\$255**
4065 (175872) LP Gas..... **\$299**



4066 (175538)
Lower Burner Ignition
Cable **\$16**



4072 (175507)
Motor Capacitor..... **\$33**



4074 (175516)
Transformer..... **\$78**



4076 (175870)
Solid State Relay ... **\$76**



4088 (175503)
Main Power Switch **\$19**

BROILER PARTS – DUKE

Top, Front & Electrical Components



4062 (600-250SED)
Blower, 60Hz 120VAC.....\$549



4060 (175511)
Blower Inlet Gasket..... \$4



4146 (175108)
Blower Box Cover..... \$218



4142 (175189)
Blower Hose..... \$48



4092 (176480)
Control Board.....\$1209



4094 (175510)
Control Board Gasket.....\$16



4090 (175356)
Control Board Mounting Frame..\$44



4102 (175867)
Conveyor Motor.....\$171



4078 (175517)
Sprocket, B21 x 3/8"
Bore (Motor).....\$47



4104 (175176)
Motor Mounting Bracket\$20



4082 (175525)
Conveyor Bushing Block.....\$21



4084 (175038PS)
Right Side Conveyor Shaft..... \$117





4096 (175550)
Cook Light\$11





Combo Valve

4120 (175531) Nat Gas.....\$181

4122 (175776) LP Gas.....\$173

Upper Front Orifices	
	4106 (175735) #40 Nat Gas \$10
	4108 (175767) #52 LP Gas \$21

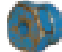

Lower Burner Orifices	
	4130 (176404) #30 Nat Gas \$32
	4132 (176412) #46 LP Gas \$19



4126 (175540)

Base Connector,
Valve to tube

\$13

Upper Rear Orifices	
	4110 (175736) #36 Nat Gas \$18
	4112 (175768) #51 LP Gas \$21

Orifice Holders	
	4134 (600290) Lower Burner \$35
	4118 (175542) Upper Burner \$20



4116 (175541)

Tee Compression Fitting.....\$22




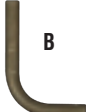
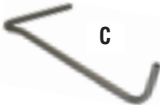
4115 (175547)

Compression Sleeve, 3/8" ..\$2.00



4117 (175548)

Compression Nut, 3/8".....\$2.75

Tubing Kits		
		
A	4114 (175476)	Tee to Upper Burner
B	4128 (175478)	Lower Burner to Valve
C	4140 (175477)	Tee to Valve
		\$36
		\$41
		\$102



8247

Super Swivel, 3/4" NPT..... \$112



GAS HOSE, 3/4" NPT

8245 36" Length \$195

8245-48 48" Length \$239

8245-60 60" Length \$249



8246

Quick Disconnect, 3/4" NPT.....\$79

REAR, DISCHARGE SIDE & BROILER STAND COMPONENTS



4170 (175534)
Lower Burner Sensor..... **\$74**
Upper Burner Sensor on p. 5



4172 (175977)
Temperature Probe,
C-Chamber.....**\$218**



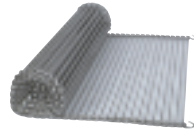
4194 (175656)
Power Cord with Orange
Plug.....**\$53**



4180 (175551)
Drive Chain (Complete).....**\$24**



4178 (175037PS)
Discharge Side Shaft.....**\$166**



4182 (175674)
Cook Chain (Complete).....**\$369**



4190 (175562)
Caster with Brake.....**\$39**



4192 (175563)
Caster without Brake.....**\$39**



8291
Pliers for Cook Chain.....**\$51**

TOOLS



4184 (175485)
Tube Burner Cleaning Tool.....**\$63**



4186 (175701)
Flame Rod Tube Cleaner.....**\$45**



4189 (175696)
Loader Tool / Socket Wrench.....**\$104**



4188 (175705)
Brush for Flame Rod Tube Cleaner.....**\$3**

BROILER PARTS – JF93 & JF94

Visit www.dmparts.com for
MORE JF Broiler Parts

BROILER SHEET, TAN






See PTFE Disclosure on p. 15



- JF93** (9-3/4" x 22-5/8")
- 8200.....Each **\$11**
 - 8200-06.....6-pack **\$56**
- JF94** (9-3/4" x 28")
- 8201.....Each **\$12**
 - 8201-06.....6-pack **\$61**



- 3000** (18447)
High Pressure Blower.....**\$914**

	JF93		JF94	
	Nat Gas	LP Gas	Nat Gas	LP Gas
 Upper Burner Orifice	3009 (18152) #52..... \$21	3031 (18160) #60..... \$21	3033 (18150) #50..... \$21	3035 (18157) #57..... \$21
 Upper Pilot Orifice	3010 (2182) #3225..... \$10	3020 (2023) #4212..... \$12	3010 (2182) #3225..... \$10	3019 (17276) #4214..... \$12
 Lower Burner Orifice	3030 (2022) #44..... \$18	3021 (2065) #54..... \$18	3032 (16590) #42..... \$18	3034 (2066) #53..... \$18
 Lower Pilot Orifice	3011 (2047) #5232..... \$12	3019 (17276) #4214..... \$12	3011 (2047) #5232..... \$12	3019 (17276) #4214..... \$12
 Zip Tube Orifice	3013 (22930) #70..... \$47	3022 (23461) #78..... \$47	3013 (22930) #70..... \$47	3022 (23461) #78..... \$47



- 8235-2** (2179)
Pilot Carryover Burner,
#J129DDA.....**\$43**



- 3025** (2180)
Pilot Carryover Burner,
#J199MDA-2H.....**\$116**



- 3028** (21316)
Modulating Gas Valve.....**\$757**



- 3026** (19054)
Solenoid Valve,
1/2" NPT, 24 VAC.....**\$239**



- Regulator, RV48, 1/2" NPT**
- 8228** (2049-A) **Nat Gas**.....**\$71**
 - 8228-LP** **LP Gas**.....**\$71**

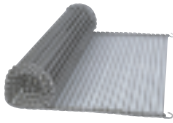


- 3027** (12741)
Solenoid Valve, 1/2" NPT, 24 VAC,
1/4" Compression Fitting.....**\$284**

All prices are subject to change. Check www.dmparts.com for the most current pricing.

WARNING: Attention CA Residents - www.P65Warnings.ca.gov

ONLINE: www.dmparts.com

**Rod Belt**

8290-13 (6035) JF93 & JF94
13" Width, per foot.....**\$64/ft.**

8290-09 (6122) JF93 only
9" Width, per foot.....**\$79/ft.**



3040 (20786) Gear Motor, DC,
Brushless.....**\$979**

3041 (17899) Sprocket, 10T,
Motor, 3/8" Bore.....**\$39**

Visit www.dmparts.com for
MORE JF Broiler Parts



8295 (6027)
#35 Roller Chain, per foot.....**\$5/ft.**



3720 (10291)
Igniter.....**\$125**



3718 (16921)
Ignition Module.....**\$387**



3723 (25957 / 17185)
Flame Sensor, Slotted.....**\$78**



3070 (17201)
Indicator Light, Red, LED,
Ignition Lockout.....**\$10**



3071 (4402)
Indicator Light, Green, 28V.....**\$38**



3068 (18861)
Thermocouple Probe, 48".....**\$68**



3078 (25918)
Control, PID Temp, Gas.....**\$818**



3074 (22929)
Transformer, 115/230 VAC x
18-24 VAC.....**\$307**



3075 (16034)
Transformer, 115/230 VAC,
24 V.....**\$174**



3072 (13579)
Switch, Motor Reversing.....**\$31**



3744 (15480)
Main On/Off Switch.....**\$221**



3126 (14900)
Clutched Sprocket Only.....**\$447**



BROILER SHEET, TAN, 19-3/8" X 28"

See PTFE Disclosure on p. 15

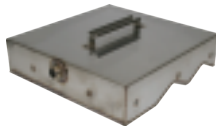
- 8202.....Each **\$19**
- 8202-06..... 6-pack **\$97**
- 8202-12..... 12-pack **\$171**

Unless otherwise noted, the parts listed on pages 11-14 can be used on both the **FH94** and the **FH94HE** (energy savings version)

AIR BOX & BURNER



3401 (27873)
Double Burner, 28.5", Top.....**\$567**



3407 (27854) Non-HE
Airbox, FB-G, 2 Burner, 2 Lane...**\$989**



3418 (30959) HE
Airbox, Energy Savings**\$969**



3409 (22965)
Element, 28", 1100W 120V**\$225**



3400 (29747) Non-HE
Triple Burner, 28.5" Bottom**\$873**



3417 (31560) HE
Triple Burner, 28.5", Bottom.
Energy Savings **\$1199**



3405 (26606)
Micronel Blower, 24V**\$889**



3416 (27968)
Air Tube Manifold**\$119**



3408 (25977)
Flex Connector, 3/4" X 11".....**\$169**



3001 (19764)
Heater Hose, 3/4" ID x 2" **\$13**



3002 (19763)
Hose Clamp, #12..... **\$4**








3003 (20903)
Restrictor, Air Blower,
1/4" Bore.....**\$15**



BROILER PARTS – FH 94

GAS & IGNITION

	FH94 Non-HE		FH94 HE	
	Nat Gas	LP Gas	Nat Gas	LP Gas
 Upper Burner Orifice	3411 (18141) #41.....\$21	3413 (18155) #55.....\$21	3014 (18148) #48.....\$21	3029 (18156) #56.....\$20
 Upper Pilot Orifice	8232 (2018) #3223.....\$9	3020 (2023) #4212.....\$12	8232 (2018) #3223.....\$9	3020 (2023) #4212.....\$12
 Lower Burner Orifice	3410 (18140) #40.....\$20 3412 (18144) #44.....\$20	3413 (18155) #55.....\$21	3014 (18148) #48.....\$21	3029 (18156) #56.....\$20
 Lower Pilot Orifice	3011 (2047) #5232.....\$12	3019 (17276) #4214.....\$12	3011 (2047) #5232.....\$12	3019 (17276) #4214.....\$12
 Zip Tube Orifice	3013 (22930) #70.....\$47	3022 (23481) #78.....\$47	3013 (22930) #70.....\$47	3022 (23481) #78.....\$47



8235-2 (2179)
 Pilot Carryover Burner,
 #J129DDA.....\$43



3025 (2180)
 Pilot Carryover Burner,
 #J1994MDA-2H.....\$116



3028 (21316)
 Modulating Gas Valve.....\$757



3026 (19054)
 Solenoid Valve,
 1/2" NPT, 24VAC.....\$239

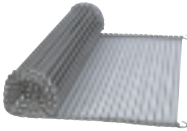


Regulator, RV48, 1/2" NPT
8228 (2049-A) Nat Gas.....\$71
8228-LP LP Gas.....\$71



Regulator Spring, RV48
8228-1 (2049-A2) Nat Gas.....\$2
8228-1LP (2049-A1) LP Gas.....\$2

CONVEYOR PATTY BELT



8290-13 (6035)
Rod Belt, 13" Width, per foot
(5 ft. required per side)..... **\$64/ft.**



3406 (26490)
Gear Motor, Parallel, BLDC..... **\$725**



3041 (17899)
Sprocket, 10T, Motor, 3/8" Bore... **\$39**



3730 (6046)
PTFE Bearing, 1" W x 1-7/8" H,
1-1/4" Bore Shaft..... **\$49**



3732 (6047)
PTFE Bearing, 1" W x 1-7/8" H,
3/4" Bore Shaft..... **\$49**



3734 (6049)
PTFE Bearing, 1" W x 1-7/8" H,
5/8" Bore Shaft..... **\$46**



8286-15 (6037)
Roller Chain Sprocket,
15T, 5/8" Bore..... **\$29**



8295 (6027)
#35 Roller Chain, per foot **\$5/ft.**



8295-1 (6048)
#35 Roller Chain
Master Link **\$3**



8295-2 (6053)
#35 Roller Chain
Offset Link **\$4**



3043 (6028)
Set Collar, 5/8" Bore..... **\$13**



3130 (11608)
Clutch Knob, Black **\$29**



3125 (15882)
Combo Clutch Assembly **\$599**



3126 (14900)
Clutch Sprocket Only..... **\$447**



3128 (14896)
Shoulder Washing Bearing..... **\$16**



3127 (10275)
Thrust Washer... **\$7**



3129 (10627)
Bearing Clip..... **\$4**



FEEDER



3123 (11194)
Drive Coupler.....\$71



3422 (20883)
Roller Chain Sprocket,
12 T, 3/8" Bore\$35



3759 (15617)
Push Bar, 13" Rod Belt,\$166



3420 (22296)
Tensioner Bracket, Pushbar
Feeder, Left Hand.....\$74



3421 (22297)
Tensioner Bracket, Pushbar
Feeder, Right Hand\$74



3760 (11381-6)
Ladder Chain, .353" Pitch,
13 GA, 6" Length.....\$29

ELECTRICAL



3402 (15576)
Thermocouple Probe, 4.09",
Type J, 60" Leads.....\$69



3403 (26398)
Spark Ignitor, 2.281"\$139



3404 (27942)
Flame Sensor with Cable,
Angled\$84

TOOLS & OTHER



8766-4
Steel Pan, 1/6 Size, 4" Deep\$13



8291
Pliers for Rod Belt Chain.....\$51



8296
#35 Chain Breaker Tool\$65



3106 (25332)
Combination Wrench Tool\$49



3107 (25333)
Shaft Cleaning Tool\$36



3108 (23307)
Cleaning Brush.....\$26



BLACK/SILVER TOASTER SHEET (12-1/4" X 33")

- 8216 Each **\$12**
- 8216-03 3-pack **\$32**
- 8216-10 10-pack **\$102**
- 8216-Roll 12-1/4" x 108ft. Continuous Roll **\$375**
(equal to 39 sheets)



This product contains PTFE. For more information about the chemicals in the product visit. afcmaterials.com/about/disclosures

Este producto contiene PTFE. Para obtener más información sobre los químicos en el producto visite. afcmaterials.com/about/disclosures

SAVE ON SHEETS:

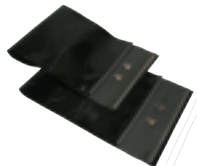
Discounts are built into our Sheet multi-pack pricing.

The more you buy, the more you save!



CONVEYOR BELTS, ORIGINAL

- 8216-W 2-pack **\$103.95**

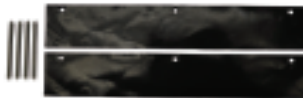


CONVEYOR BELTS, CLIP STYLE

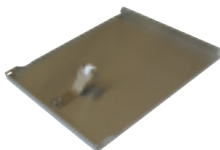
- 8217-W 2-pack **\$103.95**



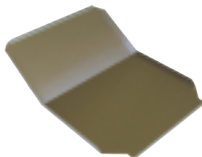
- 8618 (0011528) Top Heat Shield **\$266**



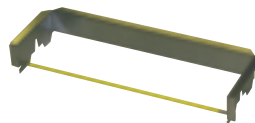
- 8634 (7000578) Toaster Damper Replacement Kit **\$19**



- 8619 (7000322) Conveyor Cover **\$247**



- 8620 (0503385) Bun Chute **\$52**



- 8623 (7000292) Bun Feeder **\$111**



8600 (7000240)
Drive Motor Kit, 230V.....\$183



8629 (0503589)
Motor Bracket.....\$27



8630 (0503590)
Motor Plate.....\$9

SPROCKETS



8637 (7001652)
Motor, 18T, 5/16" Bore.....\$17



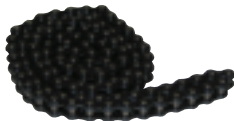
8604 (7001331)
Drive Front, 24T, 1/2" Bore.....\$32

8636 (70001329)
Drive Rear, 20T, 1/2" Bore.....\$22

8606 (7001312)
Idler, 14T.....\$27



8607 (7000207)
Conveyor Sprocket.....\$34



8608 (7001330)
Drive Chain (Complete).....\$41



8615 (7000539 / 7000224)
Universal VCT Bearing Kit.....\$209
Now includes #8614 Ball Bearings



8613 (7000199)
Aluminum Spacer, 2-pk.....\$22



8609 (7000644)
Rod, Conveyor Cover.....\$22



8632 (0700479)
Power Cord.....\$65



8614 (7002108)
Ball Bearing, 2-pk.....\$17



8616 (7001327)
Drive Shaft.....\$32

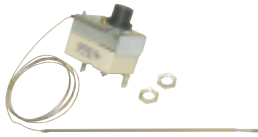
8617 (2150117)
Idler Shaft.....\$24

TOASTER PARTS

Antunes Round-Up VCT-20 Series



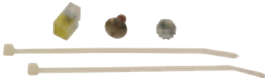
8625 (7000810 / 4050214)
Platen Thermocouple \$55



8626 (7001339)
High Limit Switch.....\$77



8631 (7000739)
Control Board \$355



8601 (7001436)
Interlock Bypass Kit.....\$21
NOTE: the On/Off Switch has been discontinued and replaced with this bypass. Instructions Included.



8602 (7000652)
Solid State Relay.....\$94



8612 (7001580 / 7000882)
On/Off Rocker Switch.....\$20



8621 (7000913)
Exhaust Fan\$222



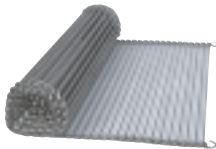
8622 (7000186)
Tensioner Assembly, 2-pk.....\$98



8627 (2100323)
Adjustment Knob.....\$18



8628 (210K230)
Leg Kit, 4-pack\$18



CONVEYOR CHAIN

8610 (7001311)
Crown (Complete) \$133

8611 (7001310)
Heel (Complete)\$88



8624 (7001598)
Slide Rail Kit 2-pk (Long)\$60



8633 (7001600)
Wear Strip (Short), 2-pk \$50



TOASTER PARTS

Antunes Round-Up **BKT-2V**

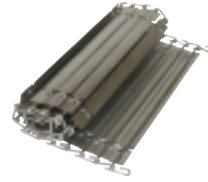


See PTFE
Disclosure
on p. 15

BLACK/SILVER TOASTER SHEET

(12-1/4" X 33")

8216	Each	\$12
8216-03	3-pack	\$32
8216-10	10-pack	\$102
8216-Roll	12-1/4" x 108ft. Continuous Roll	\$375
	(equal to 39 sheets)	



6900 (7001966)
Conveyor Belt Kit..... **\$230**



6938 (7001985)
Rear Conveyor Cover..... **\$214**

6939 (7001986)
Front Conveyor Cover..... **\$214**



6941 (7001991)
Bun Feeder..... **\$185**



6940 (7001982)
Support Rod Kit..... **\$15**



6907 (7001970) Drive Shaft w/28T
Conveyor Sprockets..... **\$159**

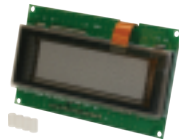
6908 (7001971) Idler Shaft w/28T
Conveyor Sprockets..... **\$149**



6910 (7001976)
Cam Shaft..... **\$21**



6924 (7001965)
Control Label..... **\$41**



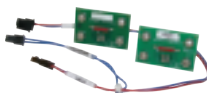
6925 (7001958)
Display Board Kit..... **\$433**



6926 (7001961)
Display Cover..... **\$8**



6927 (7001957)
Main Board..... **\$611**



6928 (7002045/7001964)
Door Sensor Board Kit..... **\$74**



6922 (7001293)
Thermocouple, Type K..... **\$63**

TOASTER PARTS

Antunes Round-Up **BKT-2V**



6901 (7000500)
Drive Motor \$599



6902 (7001977)
Motor Sprocket, 20T.....\$49



6903 (7001978)
Drive Sprocket, 12T..... \$27



6904 (7002034/0510017)
Tensioner Bracket Kit.....\$69



6905 (7002361/7001981)
Idle Sprocket Assy.....\$133



6906 (7001969)
Drive Chain (Complete)..... \$50



6923 (7001959)
Motor Board.....\$230



6920 (7002455/0509113)
Motor Mount Bracket Kit.....\$120



6921 (0509365)
Motor Mounting Bracket \$94



6929 (7001143)
Solid State Relay \$118



6930 (7001527)
Capacitor, Motor Run \$18



6931 (7001528)
Varistor Board \$43



6934 (7001144)
Hi-Limit Thermostat, 700F \$185



6935 (7001609)
Terminal Block, S-Series \$20



6936 (7001960)
Capacitor \$55

All prices are subject to change. Check www.dmparts.com for the most current pricing.

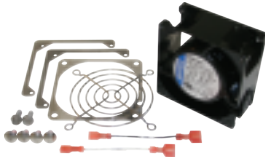
WARNING: Attention CA Residents - www.P65Warnings.ca.gov

ONLINE: www.dmparts.com



TOASTER PARTS

Antunes Round-Up **BKT-2V**



6932 (7001440/7000913)
Fan Replacement Kit, 230VAC.....\$222



6933 (7001968)
Fan Baffle.....\$92



6909 (7001975)
Cam Compression R/L.....\$34



6910 (7001976)
Cam Shaft\$22



6911 (7001987)
Compression Spring.....2-pack \$6



6912 (7001973)
Plate Tensioner.....\$10



6913 (0601158)
Roller Tension Spring\$4



6914 (7001033)
Bearing 4-pack \$81



6917 (7001980)
Idle Bearing Retainer.....\$23



6918 (7001972)
Spring Guide LH/RH.....\$34



6919 (7001979)
Drive Bearing Retainer.....\$9



6937 (7001962)
USB Cable.....\$110



6942 (7001016)
Power Cord, Twist Lock
L6-30P.....\$304



6943 (7001324)
Knob\$18



See PTFE Disclosure on p. 15

TOASTER SHEET (12-3/4" X 34-1/4")

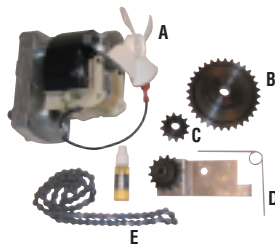
- 8218 Each **\$24**
- 8218-03 3-pack **\$65**
- 8218-10 10-pack **\$192 Best Value!**



CONVEYOR BELT

- 8218-W 1-pack **\$119**

A	8800	Drive Motor Only (87-037S)	\$398
B	8801	Motor Drive Sprocket, 32T (537-348S)	\$99
C	8802	Conveyor Sprocket, 12T	\$19
D	8803	Idler Kit (537-735S) (includes Sprocket, Spring and Bracket)	\$278
E	8821	#25 Chain 79 Pitch With Connector Link (537-728S)	\$10



- 8804 (537-378S)**
Sheet Retainer Bars **\$98**

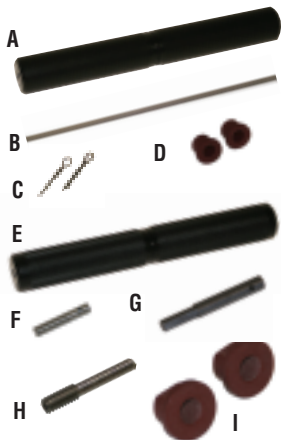


- 8805 (70-050)**
Bun Adjustment Knob **\$69**



- 8816 (537-330S)**
Conveyor Assembly **\$735**

Conveyor Assembly component parts also sold separately:



A	8814	Upper Roller (537-411S)	\$209
B	8813	Shaft for Upper Roller (537-315)	\$113
C	8813-1	Cotter Pins for Upper Shaft, 2-pk (86-272S)	\$9
D	8815	Upper Bearing Kit, 2-pk (537-317S)	\$115
E	8810	Lower Roller (537-412S)	\$255
F	8809	Lower Shaft, Short (537-318S)	\$55
G	8808	Lower Shaft, Long (537-316S)	\$62
H	8807	Gear Pin (197-279S)	\$29
I	8811	Lower Bearing Kit, 2-pk (537-370S)	\$231

Prince Castle TX Series parts continued on p. 22

TOASTER PARTS

Prince Castle TX Series & Other

PRINCE CASTLE TX SERIES (CON'T)



8817 (65-058)
Relay Switch.....\$80
Thermal Compound Included



8818 (537-400S)
Temperature Probe.....\$379
Thermal Compound Included



8820 (526-391S)
Hi Limit Control.....\$154

PRINCE CASTLE 197/297 SERIES



*See PTFE
Disclosure
on p. 15*

TOASTER SHEET (16-1/2" X 20")

8219Each \$14
8219-066-pack \$71
8219-1212-pack \$126
8219-Roll 108 ft. continuous roll \$499



8500 (87-29S)
Motor\$280

We carry other parts for the
197/297 Series

Visit www.dmiparts.com or
call **1-800-238-5384** for availability

MARSHALL AIR HST13



*See PTFE
Disclosure
on p. 15*

TOASTER SHEET (14" X 30")

8207Each \$11
8207-Roll\$355
108 ft. continuous roll



CONVEYOR BELT

8207-F Front.....\$229
8207-B Back.....\$229



See PTFE Disclosure on p. 15

BRONZE TOASTER SHEET

(14-3/4" X 27-1/2", 3 MIL)

- 8214Each \$12
- 8214-066-pack \$62
- 8214-1212-pack \$108
- 8214-ROLL 108ft. Roll \$395



See PTFE Disclosure on p. 15

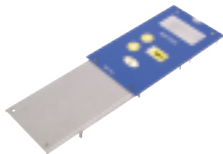
TAN TOASTER SHEET

(14-3/4" X 27-1/2", 5 MIL)

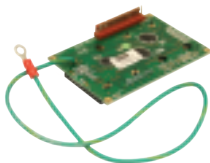
- 6822Each \$14
- 6822-066-pack \$72
- 6822-12 12-pack \$126



- 6800 (526-025S) Motor Kit \$692



- 6801 (526-073S) Membrane Switch w/ Overlay \$183



- 6802 (526-021S) Display Board \$89



- 6803 (525-106S) Main Board \$696



- 6804 (85-144-24S) Power Supply Board \$141



- 6806 (65-058S) Solid State Relay, 50 Amp \$80



- 6807 (65-064S) Power Relay \$79



- 6515 (78-184S) Rocker Switch \$25



- 6808 (526-022S) Probe \$151



- 8820 (526-391S) Hi Limit Control \$154

All prices are subject to change. Check www.dmparts.com for the most current pricing.

WARNING: Attention CA Residents - www.P65Warnings.ca.gov

ONLINE: www.dmparts.com



6815 (526-289S)
Drive Train Assembly \$779



6812 (526-101S)
Tensioner Assembly..... \$154



6813 (86-558S)
Tensioner Spring \$21



8807 (197-279S)
Gear Pin, Each \$29



8821 (537-728S)
#25 Chain \$10



6814 (526-081)
Motor/Drive Sprocket, Each \$157



6811 (526-710S)
Gear Kit, 2-pk \$282



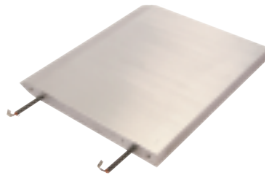
6818 (526-032S)
Handle, Each \$15



6817 (526-221S)
Knob, Each \$26



6816 (526-023S)
Fan Kit, 2-pk \$156



6819 (526-627S)
Platen \$1046



6821 (526-184S)
Major Side Overlay..... \$22

6820 (526-185S)
Minor Side Overlay..... \$22

EGG COOKER PARTS

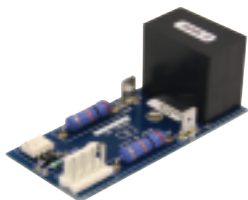
Antunes Round-Up ES-1200



8663 (7000833)
Control Board\$273



8664 (1001425)
Label for Control Board\$25



8670 (7000391)
A/C Isolator Board\$72



8667 (0700552)
Power Cord\$68



8612 (7001580 / 7000882)
On-Off Rocker Switch\$20



8660 (7001338)
Timer Pushbutton Switch\$50



8661 (210K122)
Leg Kit, 4-pk\$55



8662 (210K108)
Tip, Rubber Feet, 4-pk\$15

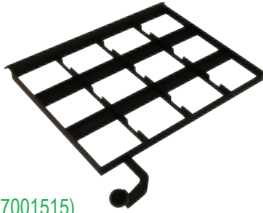
All prices are subject to change. Check www.dmiparts.com for the most current pricing.

WARNING: Attention CA Residents - www.P65Warnings.ca.gov

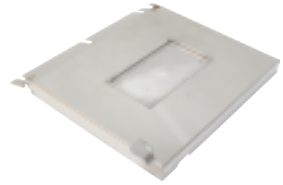
ONLINE: www.dmiparts.com

EGG COOKER PARTS

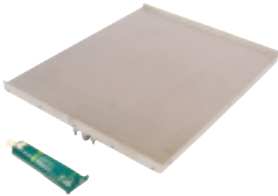
Antunes Round-Up ES-1200



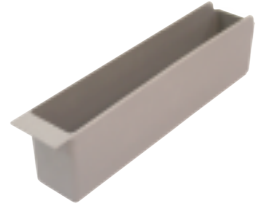
8672 (7001515)
Egg Rack, 12 Portion\$461



8675 (7001514)
Cover\$419



8673 (7000674)
Platen\$1066



8674 (2180259)
Scrap Pan.....\$84



8625 (7000810 / 4050214)
Platen Thermocouple\$55



8665 (7001145 / 4010187)
Transformer, 240V\$46



8666 (040K251)
Strain Relief Kit.....\$20



8668 (7000272)
Hi Limit Thermostat\$185



8669 (7000370)
Solid State Relay.....\$103



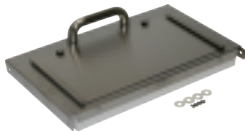
8671 (7000136)
Terminal Block.....\$22



4910 (59002112)
Menumaster Power Cord **\$39**



4911 (59004013)
Magnetron **\$129**



4912 (59124193)
Door Assembly **\$449**



4913 (59214775)
Touch Panel Assembly **\$169**

SAFETY APPAREL

CUT RESISTANT GLOVES



Tucker Red Glove **\$21 ea**

- 8405-S** Small
- 8405-M** Medium
- 8405-L** Large



White/Blue Glove **\$18 ea**

- 8404-S** Small
- 8404-M** Medium
- 8404-L** Large

UTILITY WORK GLOVES



Tucker Cut-Resistant
Freezer Gloves **\$14/pr**

- 8406-M** Medium
- 8406-L** Large
- 8406-XL** X-Large



Tucker Cut-Resistant
Stocking Gloves **\$16/pr**

- 8407-M** Medium
- 8407-L** Large
- 8407-XL** X-Large

OVEN MITTS



8335
Tucker QuickClean™ Oven Mitt,
15" Length, 450°F\$35 ea



8344
Tucker Puppet Mitt, Nomex® with
VaporGuard™ and Kevlar Palm
15" Length, 900°F\$49 ea



8354
Oven Mitt, 17" Length.....\$9 ea

BROILER MITTS



8353
Tucker Three-Finger QuickClean™
Gloves, Poly Cotton with Kevlar
Hand, 18" Length, 650°F\$99/pr.



8355
Broiler Mitts, Neoprene Coated,
Heavy Duty Insulated,
17" Length, 350°F\$36/pr.

FRYER GLOVES



Tucker QuickClean™ Fryer Gloves
20" Length, 300°F\$33/pr.

8330-M Size Medium
8330-L Size Large
8330-XL Size X-Large



8356
Fryer Gloves, Neoprene Coated,
Heavy Duty Insulated,
17" Length, 350°F\$36/pr.



8356-31
Fryer Gloves, Neoprene Coated,
Heavy Duty Insulated,
21" Length, 350°F\$51/pr.



Search for parts
and place
orders online

www.dmiparts.com



8413
Infrared Forehead Thermometer.....**\$59**

- Fast Reading (Approx. 1 second)
- Runs on 2 AAA Batteries (included)
- Memory for last 25 readings



8333
Tucker QuickClean™ Apron,
36".....**\$45**



8361 Apron,
Heavy Duty PVC,
35" x 45".....**\$29**



8362 Face Shield (w/visor), w/Deluxe
Adjustment.....**\$28**

8362-1 Replacement
Visor Only, 8" x 15-1/2".....**\$10**



8364
Tucker QuickClean™
ShinGuards™.....**\$59**



10" Hi-Top Boots
8363 Size Large.....**\$58**
8363-XL Size X-Large.....**\$58**



8403
Wall Mount for Vinyl PVC
Gloves.....**\$15**
(Hardware included)

MAINTENANCE



10000-B
Looped Mop Head, Blue\$9



10000-R
Looped Mop Head, Red\$9

10003
Mop and
Broom Handle,
53"6-pack \$72



10004
Wringer, Green / Red \$53



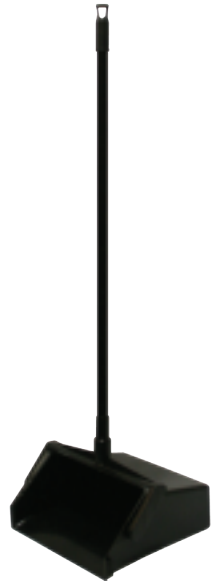
10005
Wringer, Blue / Yellow..... \$53



10006-B
Mop Bucket, Blue, 26 Qt \$52



10006-R
Mop Bucket, Red, 26 Qt..... \$52



10015
Lobby Dust Pan w/ Handle..... \$12



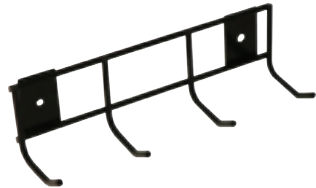
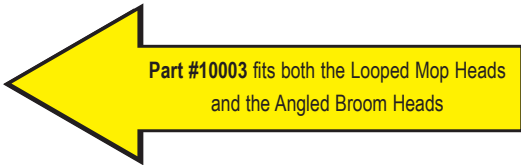
10010-B
Angled Broom Head, Blue.....\$9



10010-G
Angled Broom Head, Green.....\$9



10010-R
Angled Broom Head, Red\$9



10025
Tool Holder\$12



10020
Restroom Caddy, Yellow\$10

HAND BRUSHES



10018-B
Blue\$4



10018-R
Red.....\$4



10018-W
White\$4



10018-Y
Yellow\$4



10021
Toilet Brush, Yellow\$7



10507
Viper® Pro Multi-Purpose Safety
Cutter, Hi-Vis Yellow **6-pk \$21**



10508
Viper® Pro Bag Opener,
Safety Orange **6-pk \$17**



10509
X-tra Safe® Disposable Utility
Knife, Yellow **6-pk \$26**



8574
Pouchmate Pouch Opener **\$4**



8575
Bucket Opener, Plastic **\$15**



8576
Safety Box Cutter **\$6**



8455
Red Sani-Pail, 6 Qt. **\$5.50**



8456
Blue Sani-Pail, 6 Qt. **\$5.50**



9013
Scouring Pad, Green, Medium Duty,
6" x 9" **Box of 20 \$29**



8562 No Slip Magnetic
Doorstop **\$8**



8564 Table Wobble
Stopper **6-pk \$5**



4900 Silver King
Door Gasket, 27" x 28" **\$142**
(SKTTR7F Fridge/
SKUCF7F Freezer)

MAINTENANCE

CEILING TILE PROTECTOR



Keeping your ceiling tiles clean has never been easier!

- The Ceiling Tile Protector shown here is black for illustration purposes only. It is clear and nearly invisible.
- Fast and easy installation.
- Reduces ceiling maintenance costs.
- National Sanitation Foundation (NSF) tested.
- Fits all standard diffusers (24" x 24")

8577each **\$35**
 8577-05 5-pack **\$149**

SCOTCH-BRITE™ FRYER & KITCHEN CLEANING TOOL

8373
 Starter Set (Includes 1 Tool, Each of 3 Interchangeable Cleaning Pads**\$66**
 3 Powerful Positions



Acute Position
POWER SCRUBBING



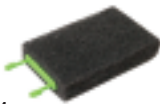
Extended Position
LONGER REACH



Right Position
HARD SPOTS

INTERCHANGEABLE CLEANING PADS FOR #8373 TOOL

Can be used wet or dry at temperatures up to 350°F



8373-1
 Gray Heavy Duty Pads..6-pk **\$24**



8373-2
 Green Medium Duty Pads..6-pk **\$24**



8373-3
 Blue Low Scratch Pads..6-pk **\$24**

Thousands of loyal customers agree:

DMI's convenient **AUTOSHIP PROGRAM** can't be beat!

1 Choose any quantity & combination of items found in our catalog. The most popular Autoship items are:

**Toaster Sheets & Conveyor Belts, Safety Apparel,
 Gycor Filter Pads, Taylor Blades, Brush Kits & Tune-Up Kits**

2 Choose frequency of Autoship:

Monthly, Bi-Monthly, Quarterly, or Semi-Annually

DMI is proud to offer Frymaster replacement parts!

FOR FRYMASTER MJ45 AND H50 UNITS



6000 (806-4206)
Temperature Probe
Assembly.....\$243



6001 (210-0681)
Probe Guard.....\$24



6002 (826-1177)
Hi-Limit Thermostat.....\$213



6003 (807-6084)
Heat Relay, 12V\$44



6004 (806-3660)
Sound Device High Output.....\$42



6005 (807-2103)
Drain Valve Switch\$19



6006 (807-4978)
Dual Voltage Transformer...\$123



6007 (826-3191)
Filter Pump/Gasket Kit\$635

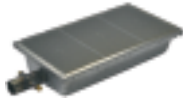


6008 (826-1712)
Filter Pump Motor.....\$786

FOR FRYMASTER H50 UNITS ONLY



6100 (826-0981)
Igniter with Gasket, Nat.....**\$165**



6101 (826-1072)
Universal Burner, Nat/LP.. ... **\$653**



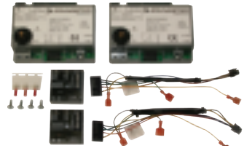
6112 (826-0931)
Burner Insulation Kit
for #6101..... **\$162**



6105 (826-2024)
Ignition Cable..... **\$75**



6114 (826-3668)
Full Vat Fenwall Ignition
Module Conversion Kit..... **\$442**



6116 (826-3669)
Duel Vat Fenwall Ignition
Module Conversion Kit..... **\$569**



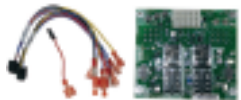
GAS VALVES

6106 (826-1122)
Honeywell, Nat.....**\$226**

6107 (826-1120)
Conversion Kit,
RS to Honeywell, Nat.....**\$303**



6108 (106-2994SP)
Blower Assembly **\$403**



6109 (826-2264)
Interface Board..... **\$339**



6110 (810-0403)
Burner Orifice, Nat, O-4000 ft. **\$34**



6111 (807-3843)
Fuse, 3 Amp, 250V..... **\$11**

FOR FRYMASTER MJ45 UNITS ONLY



6050 (806-0184)
Operating Thermostat **\$443**



6051 (810-1873)
Thermopile with Push-on
Terminal..... **\$103**



6052 (810-0617)
Thermopile with
Coaxial End **\$154**



6054 (807-3294)
Gas Valve, Honeywell,
Nat, 24V **\$336**



6055 (807-2427)
Gas Valve, Honeywell, Nat,
Millivolt..... **\$354**



6053 (810-0426)
Pilot, Nat..... **\$98**



6056 (826-1596)
Gas Valve Conversion Kit,
RS to Honeywell, Nat..... **\$310**



6057 (806-3548/826-2574)
Interface Board..... **\$473**

*Don't see the Frymaster parts you need?
Call us at 1-800-238-5384 for pricing & availability of other items.*



FRY BASKETS

8369 Green Handle
12"L x 6"W x 5-3/8"H.....**\$32**

8387 Blue Handle
13"L x 5-1/2"W x 5-1/2"H**\$32**

FRY BASKETS W/ LID & DIVIDERS

8389 Yellow Handle, 5 slot
12-1/2"L x 6-3/8"W x 3-1/2"H ...**\$31**

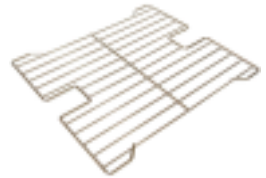
8369-4 Blue Handle, 10 slot
12-1/2"L x 6-1/8"W x 4"H**\$29**



8369-3 Fry Basket Submerger
(for use with #8369) **\$27**



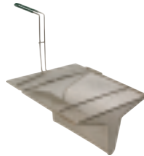
8369-1 Fry Basket Insert
(for use with #8369 or #8387)..... **\$39**



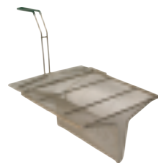
8388 Fry Basket Support Rack
(fits Frymaster MJ45 & H50)..... **\$159**

SEDIMENT TRAYS

- Fits beneath your fry baskets to catch crumbs and sediment.
- Can be removed quickly and easily for cleaning.
- Helps to lengthen the life of your oil.



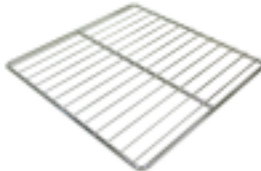
8370
14"L x 12.5"W X 6.5"H.....**\$199**
Fits Most Frymaster Gas Fryers



8372
13.25"L x 11.75"W X 6.5"H.....**\$219**
Fits Most OCF/GL Gas Fryers



5201
Pitco Basket Support Rack, Twin
13-1/2"L x 6"W **\$169**



5202
Pitco Basket Support Rack, Full
13-1/2"L x 13-1/2"W**\$169**



5203
Pitco Basket Support Rack
13-1/2"L x 17-1/2"W **\$169**

All prices are subject to change. Check www.dmparts.com for the most current pricing.

WARNING: Attention CA Residents - www.P65Warnings.ca.gov

ONLINE: www.dmparts.com

SHORTENING SHUTTLE®



- **STOPS HOT OIL BUCKET BURNS!**
- **SAVES 30-50%** on labor costs and lowers your liability exposure

Shortening Shuttle® **\$815**

DMI Part #	8368	8368-S
Model #	SS-611-T	SS-611-TL
Capacity	80 Lbs. / 10.5 Gal.	60 Lbs. / 9 Gal.
Min. Fryer Drain Hgt.	11.5 in.	9.9 in.
Max. Waste Cont. Hgt.	49.5 in.	49.5 in.
Overall Dimensions	12"W x 12"H x 58"L	12"W x 10"H x



8368-1 Wall Hook **\$22**



8368-2 Top Handle **\$35**
8368-3 Wheel Handle **\$35**



8368-4 Single Wheel **\$47**

Manufactured by Worcester Industrial Products, Worcester, MA.



8247-1 Super Swivel,
1" NPT **\$169**



GAS HOSE, 1" NPT
8244 36" Length **\$199**
8244-48 48" Length **\$239**



8246-1 Quick Disconnect,
1" NPT **\$105**



8369-2 Universal
Fry Basket Hanger **\$129**



8378 Fryer Drain
Extension Pipe **\$68**



8378-1 Vat Cover,
Frymaster Gas..... **\$86**

FRY BAGGING SCOOPS



8371
Plastic, Dual Handle..... \$19



8371-1
Plastic, Right Hand..... \$19

8371-2
Plastic, Left Hand..... \$19



8371-DH
Metal, Dual Handle..... \$19

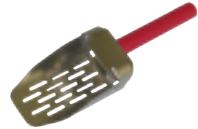


8371-RH
Metal, Right Hand..... \$19

8371-LH
Metal, Left Hand..... \$19



5634 Grate Comb for
Forced Air Fry Station..... \$10



8371-OR
Onion Ring Scoop..... \$32



8379
Fry Waste Bucket..... \$21

ACCUSALT SHAKER



8440 AccuSalt Shaker with
6.5 g Gray Insert Cover..... \$59

8440-3
Insert Container..... \$14



8439 AccuSalt Shaker with
3.7 g Black Insert Cover..... \$66



8440-1
Amber End Cap..... \$12



8440-4
Body Only..... \$36



8439-1
Black End Cap..... \$18



8440-2
Gray Insert Cover, 6.5 g..... \$12



8439-2
Black Insert Cover, 3.7 g..... \$11

Fryer Cleaning Scoop

8374 Frymaster (23" length)..... **\$64**

5204 Pitco (19" length)..... **\$49**



Fryer Cleaning J-Rod

8374-1 Frymaster (29" length)..... **\$15**

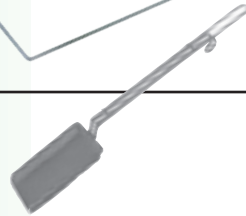
5200 Pitco (21" length)..... **\$91**



8374-2

Fryer Skimmer, Rectangular..... **\$39**

(20" length, 4" width)



8374-2A

Fryer Skimmer, Square..... **\$14**

(19-1/2" length, 6-1/2" width)



8374-3

Fryer Brush, Right Angle..... **\$17**

(21" length)



8374-4

Fryer Brush, Straight..... **\$14**

(23" length)



8430

Ice/Shortening Scoop, 58 oz..... **\$29**

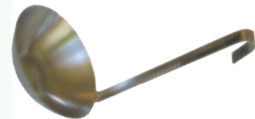
(14-1/2" length)



8432

Shortening Ladle, 32 oz..... **\$25**

(19" length)





8367
Shortening Saver..... **\$165**
• Fits on top of standard 5 gal. pail
• Keeps crumbs out of fryers/multipots



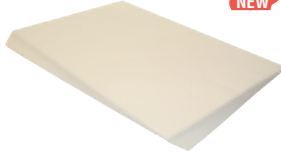
8376
Shortening Test Kit..... **\$16**
8376-D
Dropper Only..... **\$7.50**



5549
Vito® 50/80 Filters,
Box of 100..... **\$239**



5540
Fri-Mor™ Filter Powder,
12 Lb. Box..... **\$65**



Plain Paper Filter Sheets
Case of 100

5535 (SPP-1641) 16.5" x 25.5" .. **\$66**
5536 (SPP-1921) 22" x 34" **\$109**



Plain Paper Filter Envelopes
Case of 100

5550 (EPP-1294) 19" x 20.5"
with 1.375" Center Hole through
one side..... **\$159**

5548 (EPP-1843) 9.25" x 15"
with 1.25" Offset Hole through
one side..... **\$88**

STAINLESS STEEL HOOD FILTERS



Part #	Trade Size	Actual Dimensions	Price
	H x W	H x W x D	
8380-S	10 x 16	9-5/8 x 15-5/8 x 1-7/8	\$42
8381-S	10 x 20	9-5/8 x 19-5/8 x 1-3/4	\$42
8382-S	16 x 16	15-5/8 x 15-5/8 x 1-3/4	\$48
8383-S	16 x 20	15-3/4 x 19-5/8 x 1-3/4	\$54
8385-S	20 X 16	19-5/8 x 15-3/4 x 1-3/4	\$54
8384-S	20 x 20	19-5/8 x 19-5/8 x 1-3/4	\$58

ORDERING TIPS

- Please order with the **Height (H)** dimension first and the **Width (W)** dimension second
- Filters should always be installed with the baffles running in the Vertical (top to bottom) position

All prices are subject to change. Check www.dmparts.com for the most current pricing.

WARNING: Attention CA Residents - www.P65Warnings.ca.gov

ONLINE: www.dmparts.com

- **LENGTHENS OIL LIFE** - Clarifies, brightens & freshens shortening more effectively than competitive products.
- **IMPROVES FOOD QUALITY** - Less oil absorbed into food.
- **SPECIAL INGREDIENT** - FRI-MOR™ filter powder (in the pad) chemically alters the oil to remove impurities.
- **CONVENIENT** - Compact 30-day packaging. Easy to store and easy to monitor frequency of shortening filtration.
- **SAVES MONEY** - Less add-back in fryers reduces excessive top-off with the more expensive oil.

ENVELOPES			
DMI# (Gycor #)	Dimensions	Description	Price per Case of 30
5506 (ESA-149)	16" x 16" 1.125" Center Hole (through one side)	Filter Screen Adapter	\$81
5509 (ESA-126)	13.75" x 20.375" 1.50" Center Hole (through one side)	Filter Screen Adapter	\$81
5516 (ESA-154)	11" x 19" 0.75" Side Hole (through both sides)	Filter Screen Adapter	\$72
5520 (ESA-103)	16.75" x 22.5" 0.6875" Side Hole (through one side)	Filter Screen Adapter	\$106
5525 (ESA-161)	17.5" x 21" 1.50" Side Hole (through one side)	Filter Screen Adapter	\$99
5511 (ESA-124)	13" x 13" No Hole	F.A.S.T. Portable (No retrofit)	\$65
5515 (CH-1630)	14" x 15" 0.875" Center Hole (through both sides)	F.A.S.T. Portable (retrofit w/center stand pipe)	\$55
5507 (ESA-153)	11" x 20" 0.75" Center Hole (through both sides)	Low Boy (J50S) Portable	\$75
5522 (ESA-169)	11" x 20" 1.5" Center Hole (through one side)	Low Boy (J50SA), Frontline Portable	\$75
5508 (ESA-129)	19" x 20.5" 1.375" Center Hole (through one side)	Pitco Built-In	\$101
5527 (ESA-105)	14.25" x 22.5" 1.5" Off-Center Hole (through one side)	Henny Penny Built-In	\$89
5528 (ESA-156)	23" x 32" 1.5" Side Hole (through one side)	UltraFryer	\$155



5521
Optional Clip for
Envelopes..... **\$2ea.**

See page 41 for
Vito® and Plain
Paper Filters.

THE POWDER IS IN THE PAD!



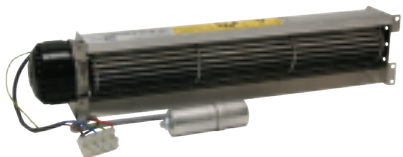
AUTOSHIP PROGRAM

All Gycor products can be set up for DMI's convenient Autoship Program. Call **1-800-238-5384** today. Never worry about forgetting to order again!

SHEETS

DMI# (Gycor#)	Dimensions	Description	Price Per Case of 30
5500 (SSA-140)	14.5" x 21.75"	Frymaster FP3 & Pro Series Built-In	\$49
5501 (SSA-109)	12.375" x 21.5"	Frymaster FP1, FP2, FM2 Built-In	\$46
5503 (SSA-108)	12.5" x 18"	Frymaster FM1 Built-In	\$42
5517 (SSA-115)	14.1875" x 29.1875"	Frymaster Built-In	\$55
5524 (SSA-1504)	11.25" x 19.125" Thicker Grade *	Frymaster OCF Pitco ROV / SSHLV	\$46
5529 (SSA-164)	16.5" x 25.5"	Frymaster All except OCF & TCF	\$45
5505 (SSA-117)	16.375" x 24.375"	Dean / Frymaster Built-In	\$57
5510 (SSA-116)	16.375" x 18.375"	Dean / Frymaster Portable	\$48
5526 (SSA-1164)	16.375" x 18.375" Thicker Grade *	Dean / Frymaster Portable	\$66
5504 (SSA-125)	9.625" x 15"	Filtercorp Adapter F-16	\$51
5504-1 (G-100)		Gasket for use with F-16 Pads	ea. \$29
5523 (SSA-170)	12.5" x 15"	Filtercorp Adapter F-40	\$45
5523-1 (G-200)		Gasket for use with F-40 Pads	ea. \$30
5502 (SSA-150)	11.25" x 19.125"	Pitco SGH50 & AG14S Built-In	\$42
5512 (SSA-113)	13.5" x 24"	Pitco Portable P14	\$49
5519 (SSA-135)	17.5" x 28"	Pitco / Dar Pro Portable P18, P24, P34	\$63
5518 (SSA-168)	18" x 25"	RTI System	\$59

* Thicker Grade Pads are made from a heavier material for a faster flow rate.



4606-LH
Complete Blower Module, Left Hand
For 36" Station.....\$709



4606-RH
Complete Blower Module, Right Hand
For 36" Station.....\$709



4610
On/Off Switch\$72



4611
Relay\$43



4614
Hi Limit Thermostat\$39



4612
Divider for 32" / 34" / 36" Stations\$79

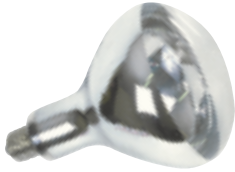


4613
Filter Assembly for 36" Station\$397

Visit us online at
the NEW & improved
www.dmiparts.com
 and see how simple it
 is to search for parts
 and place orders 24/7



INFRA-RED HEAT LAMP – CLEAR



75 WATT, 120V

8366.....\$12.50

8366-06.....\$66 6-pack

375 WATT COATED, 120V

8366C.....\$29

8366C-06.....\$152 6-pack

125 WATT, 120V

8395.....\$8

8395-06.....\$43 6-pack

125 WATT COATED, 120V

8395C.....\$19

8395C-06.....\$103 6-pack

250 WATT, 120V

8396.....\$8

8396-06.....\$43 6-pack

250 WATT COATED, 120V

8396C.....\$24

8396C-06.....\$130 6-pack

**SAVE 10% WHEN YOU PURCHASE
BULBS IN A 6-PACK!**

SAFETY COATED – TRADITIONAL SHAPE



40 WATT COATED, 130V

8398.....\$6

8398-06.....\$32 6-pack

40 WATT COATED, 250V

8391.....\$9

8391-06.....\$49 6-pack



There are several
convenient ways to
place your order with DMI



Call Toll Free 1-800-238-5384
weekdays 8:15 am to 5:00 pm

Or order anytime:

Online: www.dmiparts.com

Email: orders@dmiparts.com

Toll Free Fax: 866-302-9397

VEGETABLE SLICERS

PRINCE CASTLE SABER KING

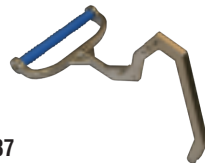


8530 Saber King Chassis **\$1049**

- Save time and labor
- Slice 4 tomatoes at once
- Easy to use and clean
- Blade covers improve safety
- Interchangeable blade cartridges adds flexibility



8536
Cross Bar Assembly **\$81**

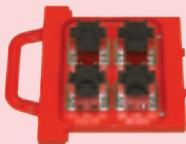


8537
Handle Assembly **\$185**

TOMATO



8531-1
Blade Cartridge, 1/4" **\$455**



8531-2
Pusher Cartridge, 1/4" **\$319**

ONION



8532-1
Blade Cartridge, 3/16" **\$389**



8532-2
Pusher Cartridge, 3/16" **\$269**

FOR BOTH SABER KING AND SABER KING MINI



8538
Cartridge Lock **\$28**



8539
Replacement Leg ... **\$49**



8540
Rubber Feet .. **4-pk \$38**



8541
Linkage Pin Pack... **\$39**

PRINCE CASTLE SABER KING MINI



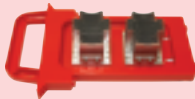
8525 Saber King Mini Chassis\$869

- 40% narrower and lighter weight than the Saber King
- Interchangeable blade cartridges adds flexibility
- Blade covers improve safety
- Save time and labor
- Easy to use and clean

TOMATO



8526-1
Blade Cartridge, 1/4"\$349



8526-2
Pusher Cartridge, 1/4"\$209

ONION



8527-1
Blade Cartridge, 3/16"\$349



8527-2
Pusher Cartridge, 3/16"\$255

DMI Manufacturing, Inc.
Cleveland, OH



When will your FedEx Ground shipment be scheduled for delivery?



**NORMAL
DELIVERY
SCHEDULE
IN DAYS**
(Next Day and
2nd Day Delivery
Also Available)



My team is dedicated to getting your orders shipped immediately so that you can keep your restaurants running smoothly.

-Jeremy, Warehouse Manager

PRINCE CASTLE TOMATO SABER 943 SERIES



8550 Slicer, 1/4" Blades included (9 Blades)..... **\$649**

8550-H Slicer, 1/4" Blades included (11 Blades, High Yield)..... **\$649**

- Perma-Tight blade cartridge system never needs adjustment
- Tomato Catcher reduces clean-up and improves food safety



8550-1 Blade Set, 1/4" (9 Blades)..... **\$135**

8550-1H Blade Set, 1/4" (11 Blades, High Yield)..... **\$139**



8550-4 Pusher Head, 1/4" **\$89**

Works with both the 9 and 11 blade 1/4" sets.



8550-2
Catcher, Red Plastic..... **\$26**



8550-3
Pusher Handle, Red Plastic **\$44**



8550-6
Guide Rod Bearing..... **ea \$15**



8550-7
Guide Rod Cushion..... **ea \$7**



8550-5
Replacement Feet..... **4-pk \$19**

CUT RESISTANT GLOVES

Tucker Red Glove \$21 ea

8405-S Small
8405-M Medium
8405-L Large



White/Blue Glove \$18 ea

8404-S Small
8404-M Medium
8404-L Large



NEMCO EASY TOMATO SLICER



- 8556** (N56600-2) Slicer, 1/4" Blades.....**\$419**
- 8556-A** (N56600-1) Slicer, 3/16" Blades.....**\$419**

- Cleanly cut mounds of uniformly sliced tomatoes in seconds
- Razor sharp stainless steel blades
- Unique design provides long life



- 8556-1** Blade Set, 1/4" (10 Blades).....**\$54**
- 8556-1A** Blade Set, 3/16" (13 Blades).....**\$54**



- 8556-4** Pusher Head, 1/4".....**\$159**
- 8556-4A** Pusher Head, 3/16".....**\$159**

NEMCO EASY TOMATO SLICER II™



- 8557** (N56600-2) Slicer, 1/4" Blades.....**\$519**
- 8557-A** (N56600-1) Slicer, 3/16" Blades.....**\$519**

- No need to adjust the blades
- New Pretensioned blade cartridge maximizes safety and blade longevity
- Blades are razor sharp stainless steel for a smooth, precise cut



- 8557-1** Blade Set, 1/4" (11 Blades).....**\$99**
- 8557-1A** Blade Set, 3/16" (14 Blades).....**\$99**



- 8557-4** Pusher Head, 1/4".....**\$175**
- 8557-4A** Pusher Head, 3/16".....**\$195**



- 8902**
Foot Pad..... **\$4.00 ea**

We carry additional replacement parts for Nemco Slicers and Choppers.

Call 1-800-238-5384 for pricing and availability.

NEMCO EASY SLICER VEGETABLE CUTTER



8560 (N55200AN) Slicer, Adjustable Cut\$629

- Compact, portable, and easy to use
- Set the desired thickness by turning a thumb screw (calibrated in 1/16" increments to a maximum of 1/2")
- Mounting base (sold separately) attaches easily to countertops or other flat surfaces



8560-1
Blade Set, Adjustable Cut\$83



8563
Shaft Lock Assembly.....\$32



8561
Guard.....\$83



8565
Portable Base.....\$239

SLICER BLADE CLEANING BRUSHES



8549
3" Bristles \$32



8905
2" Bristles.....\$31



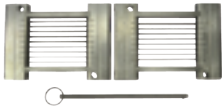
8907
4-1/2" Bristles...\$10



8551
Tomato Core-It\$4

See page 52 for Cut Resistant Gloves

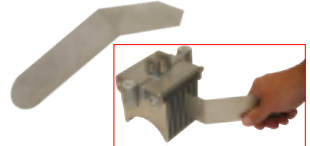
NEMCO EASY ONION SLICER



8922
Blade Set, 3/16",
(Includes Blade Pin)**\$159**



8925
Pusher Head, 3/16"**\$449**



8906
Pusher Head Cleaning Tool.. **\$15**



8923
Blade Pin**\$8**



8924
Pusher Plate**\$5**



8924-4
Pusher Head Screw**\$3**



FRONT & REAR LEGS

8900
Right Front/Left Rear**\$41**

8901
Left Front/Right Rear **\$41**

Choosing your replacement legs:
To determine if you need left or right & front or rear, face the slicer as if you are slicing the onion or lettuce.



8902
Replacement Foot Pad
(4 required)**\$4 ea.**



8908
Replacement
Spring**\$6**



8926
Lever/Handle**\$58**



8903
Ring Pin**\$12**



8924-1
Middle Spacer**\$2**



8924-2
End Spacer.... **\$8**



8924-3
Red End Spacer**\$2**



8924-5
Hex Nut ... **\$2**



8924-6
Acorn Nut**\$2.50**



- Fast Reading (Approx. 1 second)
- Runs on 2 AAA Batteries (included)
- Memory for last 25 readings

8413
Infrared Forehead Thermometer **\$59**

? DID YOU KNOW ?

DMI has been family owned and operated since 1997

We are known nation-wide for our outstanding customer service team!

ATKINS AQUATUFF™ 351 WRAP AND STOW SERIES DIGITAL THERMOMETER



8415-BP Thermometer with Bell (Surface) Probe **\$309**



8415-NP Thermometer with Needle Probe **\$309**

- **-100°F to 500°F**
- IPX7 Waterproof rated
- Auto shut-off
- 2 AAA Batteries included
- Wrap & Stow™ Probe can easily be replaced in the field without recalibration



8415-1 Bell (Surface) Probe Only **\$115**



8415-2 Needle Probe Only **\$115**



8415-3 Battery Cover **\$23**



8415-4 Thermocouple Solid Simulator **\$56**

- The Solid Simulator simulates food product temperature in changing ambient conditions of any refrigerator, freezer or walk-in.
- The temperature of the Solid Simulator will display immediately when plugged into your Atkins 351 Series Digital Thermometer



8410 Pocket Thermometer, 1" Dial\$9
0°F to 220°F



8411 Pocket Thermometer, Digital w/Hold..... \$29
-58°F to 302°F



8409 Cooler Thermometer, Metal \$11
-20°F to 80°F

- Hangs or stands for easy installation
- HACCP Safe Zones



8409-1 Cooler Thermometer,
 Plastic..... \$5.50
-40°F to 120°F

- Space saving design
- HACCP Safe Zones

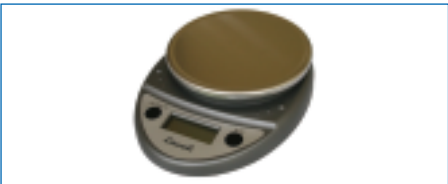


8416 Electronic Timer / Clock / Stopwatch \$32

- Counts up or down
- Memory recall
- Easel stand, wire hanger, clip-on or magnet mount



8419 Microwave
 Wattage Tester.....\$115



8418 Digital Portion Scale \$62

- Displays in Ounces, Pounds + Ounces, or Grams (Graduation 0.05 ounce)
- Automatic Shut-Off
- 2 AA batteries included
- 11 Lb. Capacity



8417 Mechanical Portion Scale..... \$53

- Contoured stainless steel platform holds bagged items: fries, tacos, shrimp
- Easy to read dial
- 16oz. Capacity (Graduation 0.25 ounce)
- Compact, space-saving design

TONGS



8420-BK
6" Plastic,
Black...\$2.75

8420-R
6" Plastic,
Red....\$2.75



8422-B
9" Plastic,
Blue...\$4.00

8422-R
9" Plastic,
Red....\$4.00

8422-G
9" Plastic,
Green..\$6.50



8423-R
12" Plastic, Red.....\$6



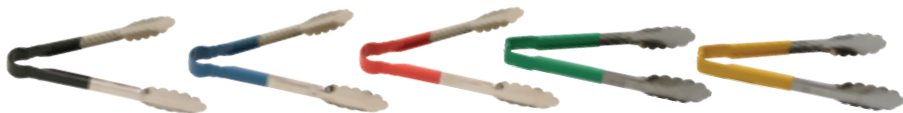
8424
9" Steel Lift N Grip\$12

8425
12" Steel Lift N Grip\$13



9009
9" Steel Scalloped.....\$11

9012
12" Steel Scalloped.....\$11



9" Metal with Plastic Coated Handle\$16

9009-BK Black

9009-B Blue

9009-R Red

9009-G Green

9009-Y Yellow



9050-BK
Refillable Grease Pencils,
Black, Box of 12.....\$14



9051-BK
Pencil Refills, Black,
Box of 72.....\$9



8426-BK Black Solid
Spoon, 1/4 oz..... **\$3**



8427-G Green Solid
Spoon, 1/2 oz..... **\$3**



8427-T Tan Solid
Spoon, 1/2 oz..... **\$3**



8428-BR Brown Solid
Spoon, 3/4 oz..... **\$3.50**



8428-R Red Solid
Spoon, 3/4 oz..... **\$3.50**



8428-C Clear Solid
Spoon, 3/4 oz..... **\$3.50**



8429-BR Brown Slotted
Spoon, 3/4 oz..... **\$3.50**



9008 Red Portion
Cup, 2 oz..... **\$7.75**



9003 Green Dishers,
3-1/4 oz., #12..... **\$10**



9004 Yellow Dishers,
2 oz., #20..... **\$10**



8551
Tomato Core-It..... **\$4**

STORE N' POUR



8482
Bottle, 1 Quart..... **\$4.50**



8484-KIT
Necks, Assorted Kit **12 pack \$54**



8483-KIT
Lids, Assorted Kit.... **12 pack \$29**



Neckeach **\$4**
8484-BK Black



8484-W White



8484-Y Yellow



Lid.....each **\$4**
8483-W White



8483-BK Black

All prices are subject to change. Check www.dmparts.com for the most current pricing.

WARNING: Attention CA Residents - www.P65Warnings.ca.gov

ONLINE: www.dmparts.com



8471
Lettuce Knife,
Green Plastic.....\$6



8472
Lettuce Knife,
Green Handle\$29



8433-W
10" Scalloped Knife,
White Handle.....\$19



8433-BK
10" Scalloped Knife,
Black Handle\$19



8470-G
Saf-T-Grip Cutting Board,
12" x 18" Green.....\$39



8470-W
Saf-T-Grip Cutting Board,
12" x 18" White.....\$25



8443
Saf-T- Grip Cutting Board,
6" x 9" White\$12



8442
Chicken Cutter/
Scoop\$18



9005
Wire Whisk, 12"\$8



8434
Spatula/Sandwich Spreader,
Plastic\$2.50



8441
Amber Spatula.....\$9



8446
Brown Salad Crock with
Clear Lid, 1.2 qt..... \$10



8444
Clear Powdered Sugar
Shaker with Top\$6

ACCUSALT SHAKER



8440 AccuSalt Shaker with
6.5 g Gray Insert Cover..... **\$59**



8440-3
Insert Container..... **\$14**



8439 AccuSalt Shaker with
3.7 g Black Insert Cover..... **\$66**



8440-1
Amber End Cap..... **\$12**



8440-4
Body Only..... **\$36**



8439-1
Black End Cap..... **\$18**



8440-2
Gray Insert Cover, 6.5 g..... **\$12**



8439-2
Black Insert Cover, 3.7 g..... **\$11**

ACCUTASTE™ SEASONING DISPENSER



9022
AccuTaste™ Seasoning Dispenser , .35cc Gray Unit..... **\$55**

- Patented design provides accurate, repeatable and functional dispensing of a premeasured dose
- Hinged lid allows for easy fill
- Designed for easy cleaning without disassembly



9020-1
Lid Only **\$6**



9020-2
Body Subassembly..... **\$32**



9022-1 Gray Base
Subassembly, .35cc **\$22**



9020-3
Pin Only..... **\$3**



9020-4
Spring Only..... **\$9**



9020-5
Thumbscrew Only **\$3**

All prices are subject to change. Check www.dmparts.com for the most current pricing.

WARNING: Attention CA Residents - www.P65Warnings.ca.gov

ONLINE: www.dmparts.com

SQUEEZE BOTTLES

8436 Clear Squeeze Bottle with Clear Cap, 12 oz.....\$2.25

9007 Clear Squeeze Bottle with Clear Cap, 24 oz.....\$4.00



8435-C
Clear Cap Only
(small opening).... \$1.00



8435-B
Blue Cap Only
(large opening) ... \$2.00



8435-G
Green Cap Only
(large opening) ... \$1.50

8460-S FIFO Bottle with Green (Small) Valve Cap, 12oz\$2.75

8460-L FIFO Bottle with Blue (Large) Valve Cap, 12oz.....\$2.75



8464
White End/Label
Cap Only\$1.00



8465-S
Green (Small) Valve
Cap Only\$2.00



8465-L
Blue (Large)Valve
Cap Only\$2.00

8460-R Squeeze Bottle with Red Dispensing and End Caps,12oz.....\$2.50



8464-R
Red End
Cap Only\$1.00



8465-R
Red Dispensing
Cap Only\$1.50

KETCHUP DISPENSER PARTS



8520 (83910)
Server Ketchup Pump
w/Locking Lid.....\$339



8522 (84031)
7 Quart Insert/Base for #8520 Server
Ketchup Pump\$49



8521 (82533)
Spare Parts Kit for #8520
Server Ketchup Pump.....\$19

8523 (82016)
Spring for #8520 Server
Ketchup Pump\$3



8480 Iced Coffee Mix Pitcher,
1/2 Gallon\$10



8481
Pitcher, 1 Gallon,
with Lid\$13



8473
Syrup Bottle, 32 oz.\$2



White Pump
for #8473
Syrup Bottle

8474-W 1 oz\$4.00
8475-W 1/2 oz\$3.50



8449
Stainless Steel Shake Cup..\$7



8491
Shake Mix Cup.....\$16



8492
Shake Mix Cup Inserts.....\$11



9014
Coffee Carafe, 1/2 gallon,
with Black Lid\$51



9014-1
Black Lid for 1/2 gallon
Carafe.....\$18



9014-2
Orange Lid for 1/2 gallon
Carafe.....\$18



5950
Funnel Assembly,
Coffee.....\$93



5951
Funnel Assembly,
Tea\$23



5952
Spray Head, White Plastic,
7 Hole.....\$4

SAFE ICE HANDLING



Use dedicated ice-only containers and utensils to keep ice protected, sanitary and your customers safe.

8450

Saf-T-Ice® Tote, 6 Gallon\$75

- **HACCP Hanger™** securely holds tote to ice machine for faster and more efficient filling of ice totes
- **Tri-Grip™** design reduces back injuries
- **Integrated Handi-Hook™** allows tote to be hung upside down for easy drying and sanitary storage

SAF-T-SCOOP® & GUARDIAN SYSTEM™



12-16 ounce

For Beverage Station:

8452

Guardian System™
(includes Scoop, Holder &
Mounting Tools).....\$75

8452-1

Replacement Scoop only\$33



64-86 ounce

For Ice Machines:

8453

Guardian System™
(includes Scoop, Holder &
Mounting Tools).....\$132

8453-1

Replacement Scoop only\$49



- **Saf-T-Scoop®** protects ice from contact with hands during use
- **Guardian System™** provides safe storage for the Scoop when not in use
- **Guardian System™** can be mounted inside or outside of ice bins with included suction cups or wire hanging brackets



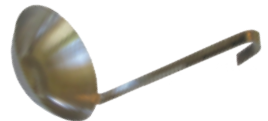
8430

Ice/Shortening Scoop,
Metal, 58 oz.
(14-1/2" length).....\$29



8431

Ice Scoop, Plastic, 12 oz.
(11-1/2" length).....\$9



8432

Shortening Ladle,
32 oz. (19" length).....\$25



BRUSH KITS



TUNE-UP KITS



BLADES

Model #	DMI #	OEM #	Description	Price
Taylor 490	5010	39465X	4-Piece Brush Kit	\$51
	5021	48398X	Tune Up Kit	\$19
	5032	84950	Plastic Blade, 3 Holes, ea.	\$19

Taylor 632	5010	39465X	4-Piece Brush Kit	\$51
	5025	33351X	Shake Side Tune Up Kit	\$19
	5026	49463-11X	Soft Serve Side Tune Up Kit	\$28
	5032	84950	Shake Side Blade, 3 Holes, ea.	\$19
	5034	35174	Soft Serve Side Blade, ea.	\$12

Taylor C707	5012	44127X	9-Piece Brush Kit	\$91
	5027	4946358X	Tune Up Kit	\$26
	5034	35174	Soft Serve Blade, ea.	\$13

Taylor C709	5012	44127X	9-Piece Brush Kit	\$91
	5028	49463-92	Tune Up Kit	\$46
	5034	35174	Soft Serve Blade, ea.	\$13



5000
Lubricant, Non-Heat Treat, 4 oz. **\$8**
(445, 490, 632, C707)



5001
Lubricant, Heat Treat, 4 oz. **\$14**
(C709)



8250-1A
Carbon Brush for
Motor, 1/4" x 1/4" **\$8 ea.**



5036-L
Stud Nut Top, Long **\$31**
(C707, C709)



5036-S
Stud Nut Bottom, Short **\$31**
(C707, C709)



5037
Stud Nut **\$31**
(632)

All prices are subject to change. Check www.dmparts.com for the most current pricing.

WARNING: Attention CA Residents - www.P65Warnings.ca.gov

ONLINE: www.dmparts.com



Pan



Flat Lid



Lid w/Handle



Drain Rack

Clear Pans - For Cold Food (-40°F to +210°F)

	Part #	Description	Price
FULL SIZE 20-7/8" x 12-3/4"	8751-2	Pan, 2-1/2" Deep	\$15.00
	8751-6	Pan, 6" Deep	\$24.00
	8751-HL	Pan Lid w/Handle	\$15.00
	8751-NL	Pan Lid w/Handle & Notch	\$16.00
	8751-1	Drain Rack	\$14.00
1/2 SIZE 10-7/16" x 12-3/4"	8752-2	Pan, 2-1/2" Deep	\$8.50
	8752-4	Pan, 4" Deep	\$10.00
	8752-6	Pan, 6" Deep	\$13.00
	8752-FL	Pan Lid - Flat	\$7.50
	8752-HL	Pan Lid w/Handle	\$7.50
	8752-1	Drain Rack	\$6.50
1/3 SIZE 6-15/16" x 12-3/4"	8753-2	Pan, 2-1/2" Deep	\$6.50
	8753-4	Pan, 4" Deep	\$9.00
	8753-6	Pan, 6" Deep	\$9.50
	8753-FL	Pan Lid - Flat	\$5.00
	8753-HL	Pan Lid w/Handle	\$5.00
	8753-1	Drain Rack	\$5.00
1/6 SIZE 6-3/8" x 6-15/16"	8756-2	Pan, 2-1/2" Deep	\$4.50
	8756-4	Pan, 4" Deep	\$5.00
	8756-6	Pan, 6" Deep	\$7.00
	8756-FL	Pan Lid - Flat	\$3.75
	8756-HL	Pan Lid w/Handle	\$4.25
	8756-NL	Pan Lid w/Handle & Notch	\$4.25
	8756-1	Drain Rack	\$2.25
1/9 SIZE 4-1/4" x 6-15/16"	8759-4	Pan, 4" Deep	\$6.00
	8759-FL	Pan Lid - Flat	\$4.00
	8759-NL	Pan Lid - Flat w/Notch	\$4.00
	8759-1	Drain Rack	\$2.00

Commonly Ordered Clear Food Pans:

8752-2

1/2 Size, 2-1/2" Deep:
Tomatoes

8752-4

1/2 Size, 4" Deep:
Lettuce

8753-4

1/3 Size, 4" Deep:
Pickles / Onions

8756-4

1/6 Size, 4" Deep:
Red Onions / Cheese



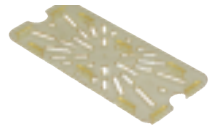
Pan



Lid w/Handle



Lid w/Handle & Notch




Drain Rack

Amber Pans - For Hot Food (-40°F to +300°F)

	Part #	Description	Price
FULL SIZE 20-7/8" x 12-3/4"	8741-6	Pan, 6" Deep	\$72.00
	8741-HL	Pan Lid w/Handle	\$39.00
1/2 SIZE 10-7/16" x 12-3/4"	8742-2	Pan, 2-1/2" Deep	\$23.00
	8742-6	Pan 6" Deep	\$39.00
	8742-HL	Pan Lid w/Handle	\$18.00
	8742-1	Drain Rack	\$13.00
1/3 SIZE 6-15/16" x 12-3/4"	8743-2	Pan, 2-1/2" Deep	\$19.50
	8743-4	Pan, 4" Deep	\$24.50
	8743-6	Pan, 6" Deep	\$33.50
	8743-HL	Pan Lid w/Handle	\$15.00
	8743-NL	Pan Lid w/Handle & Notch	\$15.00
	8743-1	Drain Rack	\$9.50
1/4 SIZE 6-3/8" x 10-7/16"	8744-4	Pan, 4" Deep	\$21.50
	8744-6	Pan, 6" Deep	\$26.50
	8744-HL	Pan Lid w/Handle	\$11.50
	8744-1	Drain Rack	\$10.50
1/6 SIZE 6-3/8" x 6-15/16"	8746-2	Pan, 2-1/2" Deep	\$14.00
	8746-4	Pan, 4" Deep	\$17.00
	8746-6	Pan, 6" Deep	\$19.50
	8746-HL	Pan Lid w/Handle	\$10.50
	8746-NL	Pan Lid w/Handle & Notch	\$10.50
	8746-1	Drain Rack	\$6.00
1/9 SIZE 4-1/4" x 6-15/16"	8749-2	Pan, 2-1/2" Deep	\$10.50
	8749-FL	Pan Lid - Flat	\$7.50

All prices are subject to change. Check www.dmparts.com for the most current pricing.

 **WARNING: Attention CA Residents - www.P65Warnings.ca.gov**

ONLINE: www.dmparts.com

FOOD PANS



Pan



Lid w/Handle



Lid w/Handle & Notch



Drain Rack

Stainless Steel Pans

	Part#	Description	Price
1/2 SIZE 10.4" x 12.8"	8762-2	Pan, 2-1/2" Deep	\$17.00
	8762-4	Pan, 4" Deep	\$21.00
	8762-6	Pan, 6" Deep	\$29.00
	8762-HL	Pan Lid w/Handle	\$13.00
	8762-1	Drain Rack	\$22.00
1/3 SIZE 6.9" x 12.8"	8763-4	Pan, 4" Deep	\$18.00
	8763-6	Pan, 6" Deep	\$27.00
	8763-HL	Pan Lid w/Handle	\$10.00
	8763-NL	Pan Lid w/Handle & Notch	\$10.00
 8704 1/3 Size Wire Mesh Drain Rack.....	\$7.00	 8707 1/3 Size Stainless Steel Drain Rack.....	\$14.00
1/6 SIZE 6.4" x 7.0"	8766-4	Pan, 4" Deep	\$14.00
	8766-6	Pan, 6" Deep	\$18.00
	8766-HL	Pan Lid w/Handle	\$9.00
	8766-NL	Pan Lid w/Handle & Notch	\$9.00
	8766-1	Drain Rack	\$15.50
1/9 SIZE 4.3" x 6.9"	8769-4	Pan, 4" Deep	\$12.00
	8769-NL	Pan Lid w/Handle & Notch	\$8.00



8736-4
1/6 Size Pan, 4" Deep, Black**\$16**
(6-3/8" x 6-15/16") (-40°F to +375°F)

Search for parts
and place
orders online

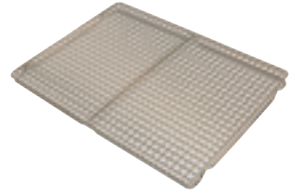
www.dmiparts.com



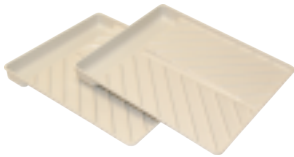
8446
Brown Salad Crock with
Clear Lid, 1.2qt. **\$9**



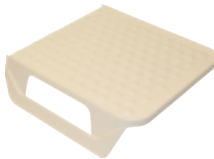
8495
1/2 Size Aluminum Baking Pan,
12-7/8" X 17-3/4"**\$18**



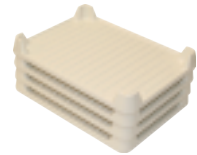
8496
1/2 Size Wire Pan Insert,
11-7/8" X 16-3/8"**\$28**



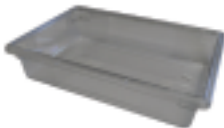
8437
Bacon Microwave Tray...**2-pack \$31**



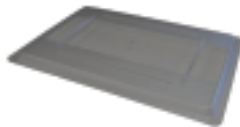
8437-1
Microwave Shelf for
Bacon Trays**\$29**



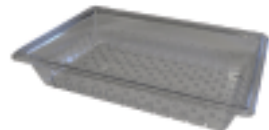
8438
Stackable Bacon Microwave
Trays.....**4-pack \$65**



8760
Lettuce Storage Box,
18" X 26" X 6"**\$43**



8760-FL
Lettuce Storage Box Lid,
18" X 26"**\$26**



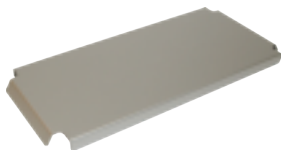
8760-C
Lettuce Storage Box
Colander, 18" X 26"**\$39**

All prices are subject to change. Check www.dmiparts.com for the most current pricing.

WARNING: Attention CA Residents - www.P65Warnings.ca.gov

ONLINE: www.dmiparts.com

FOR PRINCE CASTLE EHB24 & EHB34 UNITS



6500 (540-1002S)
Lid.....\$29



6501 (540-1158S)
Latch Kit.....\$115



6502 (197-232S)
Feet.....4-pk \$27



6515 (78-184S) On/Off Rocker Switch,
Lighted.....\$25



6505 (540-1215S)
Overlay and Display.....\$144



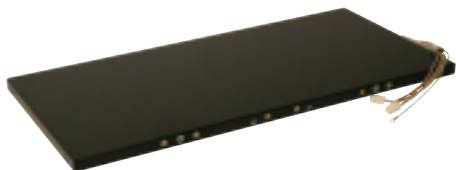
6514 (72-674S)
Power Cord.....\$159



6503-M (510-098S)
Timer Bar, 8 CH, Main (Front).....\$699



6503-A (510-099S)
Timer Bar, 8 CH, Aux (Rear).....\$699



HEATER ASSEMBLIES, 4 WIDE

6512 (540-1222S) Top Shelf, Upper.....\$589

6513 (540-1224S) Top Shelf, Lower.....\$589

6510 (540-1226S) Lower Shelf, Upper.....\$589

6511 (540-1072S) Lower Shelf, Base.....\$589

FOR PRINCE CASTLE EHB24 UNITS



6507 (95-1819S)
USB Connector.....\$38



6508 (95-2011S)
Ethernet Connector.....\$95



6506 (540-1232S)
Control Board.....\$882

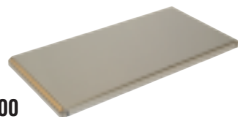


6509 (88-709-2-11S)
Speaker.....\$43



8730
Holding Unit Cleaning Brush.....\$31

FOR DUKE



4400
Duke HS2 Lid.....\$36



8706
Single Handle Pan, Amber..... each \$24



8708
Single Handle Pan, Black.....each \$24



8700
Dual Handle Pan, Amber 6-pack \$139



8735
Dual Handle Pan, Black 4-pack \$85

**Maximize Oil
Frylife and
Quality**



**Order
Gycor Filters
from DMI**

The Gycor Advantage



Saves Money. Longer oil life, less oil absorbed means lower costs and better fried products
Cleaner. No loose powder
Compact 30-day packaging. Easy to store and track replacement usage.

The DMI Advantage



DMI stocks more than 25 different sizes of Gycor filter pad sheets and envelopes for Frymaster, Dean, Pitco, Henny Penny, UltraFryer, RTI systems and more!
Never forget to order again! Sign up for DMI's Convenient Autoship Program

See p. 42-43 for details

1-800-238-5384

www.dmiparts.com



Presort Std
U.S. Postage
PAID
Mentor, OH
Permit No. 238