

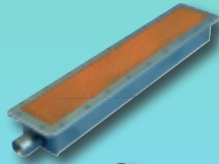


MANUFACTURING, INC.

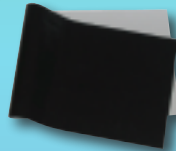
*2026
Spring
Catalog*

**Your Reliable Source For Equipment Parts
& Smallwares Since 1997**

Broiler Parts



Broiler & Toaster Sheets



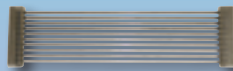
Safety & Maintenance



Fryer Parts & Accessories



Vegetable Slicers



Smallwares & More!



1-800-238-5384

www.dmiparts.com

Fax: 1-866-302-9397



APR 2026

Table of Contents & Ordering Information

BROILER PARTS - 8/9/1400 SERIES3-11

BROILER PARTS - JF143 SERIES 12-18

NEW BROILER PARTS - MV SERIES 19-23

TOASTER SHEETS 23

SAFETY APPAREL 24-26

MAINTENANCE 27-28

FRYER ACCESSORIES & PARTS

Frymaster MJ45 & H50 29-31

Fryer Tools & Accessories 32-36

Hood Filters 37

Gykor Filter Pads 36, 38-39

OTHER

Thermometers, Scales & Timers 40-41

Vegetable Slicers & Choppers 42-45

Smallwares 46-52

Bulbs 53

Food Pans 54-58

Holding Units 59

Your Customer Service Team



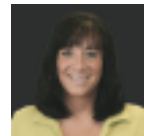
Mark



Denise



Dennis



Julie



Celina



Alethea



- ▶ DMI is open from 8:15 am to 5:00 pm EST Mon-Fri. Your call will always be answered by a live customer service representative during business hours. Phone messages left after-hours will be returned on the next business day.
- ▶ Fax, Website and Email are available 24 hours/7 days a week.
- ▶ There is no minimum order.
- ▶ All prices are subject to change. Check www.dmparts.com for the most current pricing.
- ▶ For ground shipment transit times, see map on page 45.
- ▶ Part numbers listed in green are for reference only.

Toll Free Phone Orders: 800-238-5384

Toll Free Fax Orders: 866-302-9397

Local Phone Orders: 440-975-8645

Local Fax Orders: 440-975-0688

Website Orders: www.dmparts.com

Email Orders: orders@dmparts.com

From Mexico: 001-800-238-5384



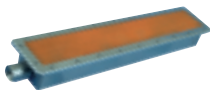
BURNERS & ACCESSORIES

BUY 3 AND SAVE!

TOTAL BURNERS ORDERED

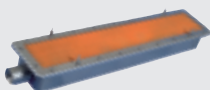
1-2

BEST VALUE
3 or more



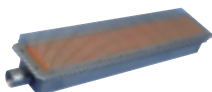
8000
Upper Dispos-A-Burner™
Without Reverberator

\$94.95 ea. **\$89.95** ea.



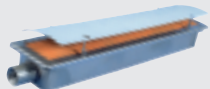
8001
Lower Dispos-A-Burner™
Without Shield

\$94.95 ea. **\$89.95** ea.



8002
Upper Dispos-A-Burner™
With Reverberator

\$110.95 ea. **\$105.95** ea.



8003
Lower Dispos-A-Burner™
With Delux Shield

\$110.95 ea. **\$105.95** ea.



8015
Spacer Kit (4) for
Lower Burner..... **\$5**



8011
Reverberator with
Safety Ends..... **\$29**



8014
Lower Burner
Delux Shield..... **\$29**



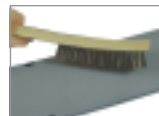
8357
Cleaning
Brush, Soft
Nylon (for
Burner Screen)..... **\$14**



8358
Cleaning
Brush, Hard
Nylon
(for Burner Tube)..... **\$17**



8359
Cleaning
Brush,
Hard Nylon
(for Shields/Rod Belts)..... **\$11**



All prices are subject to change. Check www.dmparts.com for the most current pricing.

WARNING: Attention CA Residents - www.P65Warnings.ca.gov

ONLINE: www.dmparts.com

PTFE SHEETS & ROLLS

**SHEET, BLACK/SILVER, 11-3/8" x 30"**

(for 800, 900 & 1400 Series Flow-Through Models)

8211.....	1 sheet	\$13
8211-06.....	6 sheets	\$66
8211-12.....	12 sheets	\$117

*Equivalent to
44 sheets***ROLL, BLACK/SILVER, 12-1/4" x 108 ft.**

(for 800, 900 & 1400 Series Flow-Through Models)

8216-ROLL.....		\$375
----------------	--	-------

**SHEET, TAN, 12" x 30"**

(for 800, 900 & 1400 Series Flow-Through Models)

8210.....	Each	\$13
8210-06.....	6-pack	\$66
8210-12.....	12-pack	\$117

*Equivalent to
44 sheets***ROLL, TAN, 12" x 108 ft.**

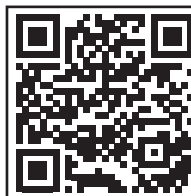
(for 800, 900 & 1400 Series Flow-Through Models)

8210-ROLL.....		\$385
----------------	--	-------

SHEET, TAN, 23" x 26"

(for 900 & 1300 Series Self-Return Models)

8213.....	Each	\$12.50
8213-06.....	6-pack	\$72



This product contains PTFE.
For more information about the
chemicals in the product visit
afcmaterials.com/about/disclosures

Este producto contiene PTFE.
Para obtener más información sobre
los químicos en el producto visite.
afcmaterials.com/about/disclosures

Thousands of loyal customers agree:

DMI's convenient AUTOSHIP PROGRAM can't be beat!

- 1 Choose any quantity & combination of items found in our catalog. The most popular Autoship items are:

**Charbroiler Sheets, Toaster Sheets,
Safety Apparel, Filter Pads**

- 2 Choose frequency of Autoship:
Monthly, Bi-Monthly, Quarterly, or Semi-Annually

IGNITION & GAS



#8220-A lens included

8220 (2001)
Gas Pressure Gauge
1/8" NPT **\$74**

8220-A (2001-01)
Lens Only **\$3**



8225-1 (2026)
Pilot Pushbutton Valve,
3/8" NPT (824) **\$169**

8225-1A
Pushbutton Only **\$95**



8225-2 (2122)
Pilot Pushbutton Valve,
1/2" NPT (824B, 1424, 950) **\$195**

SOLENOID VALVES



8221 (2003)
High Gas, 1/2" NPT
(824, 824A) **\$149**

8222 (2085-A)
Main Gas, 3/4" NPT
(824, 824A) **\$209**

8222-1 (2003-B)
Main/High Gas, 1/2" NPT
(824B, 1424, 950) **\$165**



LO-GAS REGULATOR
(824, 824A, 824B, 1424, 950)

8227 (2025-A) 3", Nat, 1/2" NPT **\$54**
8227-LP 8", LP, 1/2" NPT **\$54**



LO-GAS REPLACEMENT SPRINGS
8227-1 (2025-01) Gray, Nat **\$2**
8227-1LP (2032-A) Blue, LP **\$2**



HI-GAS REGULATOR
(824, 824A, 824B, 1424, 950)

8228 (2049-A) 5", Nat, 1/2" NPT **\$71**
8228-LP 11", LP, 1/2" NPT **\$71**



HI-GAS REPLACEMENT SPRINGS
8228-1 (2049-A2) Orange, Nat **\$2**
8228-1LP (2049-A1) Blue, LP **\$2**



8247
Super Swivel,
3/4" NPT **\$112**



GAS HOSE, 3/4" NPT
8245 36" Length **\$195**
8245-48 48" Length **\$239**
8245-60 60" Length **\$249**



8246
Quick Disconnect,
3/4" NPT **\$79**

IGNITION & GAS (Cont'd)



BURNER ORIFICES

- 8230** (2014)
Natural Gas #50 \$4
- 8223** (2015)
Natural Gas #48 \$3.50
- 8231** (2035)
LP Gas #57 \$4



PILOT ORIFICES

- 8232** (2018)
Natural Gas \$9
- 8233** (2023)
LP Gas..... \$9



THERMOCOUPLES

- 8224** (2024)
24" \$19
- 8224-48** (2101)
48" \$29



- 8240-1** (4181-08)
Spark Igniter with
(1) wire (824B, 1424, 950)
..... \$15



- 8240-2** (4181)
Spark Igniter with
(2) wires (824, 824A)
..... \$55



- 8241** (4182)
Electrode, Igniter
(1 per Pilot)..... \$9



- 8242** (4183)
Electrode Mounting
Bracket \$7

PILOT CARRYOVER BURNERS		Units Required per Broiler	
		824 824A	824B 1424 950
	8235 Standard (2011).....\$37	7	2
	8235-2 2-Port (2179).....\$43	-	2
	8235-3D 3-Port Down (2181).....\$43	-	1
	8235-3S 3-Port Straight (2178).....\$43	-	2



- 8237** (0081-07)
Pilot Chimney \$175



- 8239-1**
Pilot Carryover Tube
(824B, 1424, 950) .. \$55



- 8229**
5/16" Orifice Removal Driver \$10



- 8230-B**
Orifice Brush, Natural Gas #50 \$5
- 8231-B**
Orifice Brush, LP Gas #57 \$5

DRIVE MOTOR & ELECTRICAL



8250-950 (4144-03)
Gear Motor w/ 10T and 15T Sprockets
(824A, 824B, 1424, 950) **\$609**



8262-G (4094)
Motor Breaker Switch, Green Handle,
250V Max (824B, 1424, 950) **\$47**



8250-1C (4145-06)
Carbon Motor Brush, 3/16" X 1/4"
(824A, 824B, 1424, 950) **\$8 ea.**



8255 (4099)
Main On/Off Switch, Toggle,
20 AMP – 250 V Max..... **\$259**



MOTOR SPROCKETS

8286-10 (6102) 10T, 5/8" Bore (824)	\$27
8285-10 (6006) 10T, 1/2" Bore (824A, 824B, 1424, 950)	\$29
8285-13 (6007) 13T, 1/2" Bore	\$29
8285-15 (13011) 15T, 1/2" Bore (824A, 824B, 1424 with Bun Belt Speed Kit ONLY)	\$29



INDICATOR LIGHTS

8274-A (4222) Amber	\$10
8274-R (4100) Red	\$9



8275-1 (4041-1)
Relay/Contactor (2 per broiler)
(824B, 1424, 950)..... **\$39**



8260-1 (4602)
SC-5 (824B, 1424, 950)..... **\$25**



8261-1 (4601)
For SC-5 (824B, 1424, 950)..... **\$14**



8269 (4014)
Potentiometer, Speed
Control..... **\$81**

#8272
knob sold
separately

Some parts for the older
broiler models have
been removed from the
catalog but are
available online at
www.dmparts.com

DRIVE MOTOR & ELECTRICAL (Cont'd)



8265 (4135)
SCR Controller, Can Type,
115V\$165



#8272
knob sold
separately

8270-1 (4425)
Auto Temp Control (ATC) / Bun Platen
Control (2 per broiler)
(824B, 1424, 950).....\$275



8271 (4073)
Temperature Probe
for ATC\$55



8266 (4136)
Socket Base for SCR, 10 AMP –
600V Max\$9



8272 (4445)
Knob for potentiometer
(speed control) & ATC.....\$6



8275-1 (4041-1)
Relay/Contactor (2 per broiler)
(824B, 1424, 950).....\$39



#8277-A
knob sold
separately

8277 (4020)
Platen Control Thermostat
(824, 824A).....\$109



8270-2 (5138-P)
Dial Plate for ATC\$14



8278 (4453)
Knob, Platen Adjustment
(824B, 1424, 950).....\$32

BELT DRIVE & BEARINGS



8292-1 (6060)
PTFE Wear Strips (824B, 1424, 950) **2-pack \$75**



8287-3 (6167)
Idle Shaft, Patty / Bun (824B, 1424, 950) **\$309**



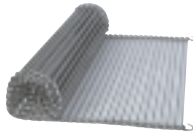
8288-1 (6168)
Drive Shaft (824B, 1424, 950)..... **\$322**

BELT DRIVE & BEARINGS (Cont'd)

PATTY / BUN ROD BELT

8290-22 (6023) 22" Width....**\$89/ft.**
(824B, 1424, 950, 952, 1352)

8290-24 (6024) 24" Width....**\$85/ft.**
(824, 824A)



8290-06 (6120) 6" Width..... **\$79/ft.**

8290-09 (6122) 9" Width..... **\$79/ft.**

8290-10 (6034) 10" Width..... **\$79/ft.**

8290-12 (6123) 12" Width..... **\$88/ft.**

8290-13 (6035) 13" Width..... **\$64/ft.**

8290-16 (6125) 16" Width..... **\$92/ft.**

8290-18 (6129) 18" Width..... **\$88/ft.**

NOTE: For broiler models listed above, the typical length of a complete patty or bun chain is 6 feet.



PTFE BEARING

1"W x 1-1/4"H 5/8" shaft

8280 (6066)..... ea. **\$8.50**

8280-4..... **4-pk \$29**



8284-1 (4048) Spacer /
Shoulder Bolt, 3" length
(824B, 1424, 950)...**\$22**







8284-2 (0074-04)
Dual Rod Belt Support
(1424) **\$76**



8295-1 (6048)
#35 Chain Link,
Master **\$3**



8295-2 (6053)
#35 Chain Link,
Offset **\$4**

SPROCKETS AND DRIVE CHAIN	Part #	Description	Price	Broiler Model		
				824	824A/B, 1424, 950	
					Standard	w/ Bun Belt Speed Kit
 Motor Sprocket	8286-10 (6102)	10T, 5/8" Bore	\$27	1		
	8285-10 (6006)	10T, 1/2" Bore	\$29		1	1
	8285-15 (13011)	15T, 1/2" Bore	\$29			1
 Bun Belt Sprocket	8286-15 (6037)	15T, 5/8" Bore	\$29	1	1	
	8286-10 (6102)	10T, 5/8" Bore	\$27			1
 Patty Belt Sprocket	8286-30 (6038)	30T, 5/8" Bore	\$55	1	1	1
 Drive Chain	8295 (6027)	#35 Drive Chain	\$5/ft.	3 feet	3 feet	1.5 feet & 4 feet

All prices are subject to change. Check www.dmparts.com for the most current pricing.

WARNING: Attention CA Residents - www.P65Warnings.ca.gov

ONLINE: www.dmparts.com

10 BROILER PARTS – 800/900/1400 Series

SHEET METAL



8008 (8455)
Upper Burner Channel Strip
(824, 824A, 824B, 1424, 950).....**\$19**



8322 (8425)
Burner Support Bracket
(824B, 1424, 950).....**\$31**



8305-1 (9453)
Upper Burner Front Reflector w/Hole
(824B, 1424, 950).....**\$49**



8308 (9005)
Lower Burner Rear Reflector
(824, 824A, 824B, 1424, 950).....**\$39**



8324 (6166)
Meat Belt Scraper, Feed End
(824B, 1424, 950).....**\$179**



8325-1 (6170)
Stripper Blade
(824, 1424, 950).....**\$75**



8304
Universal Broiler Sheet Clamp
(824B, 1424, 950).....**\$22**



8319-1 (9409)
Patty Shield
(for use with patty belt extension).....**\$68**



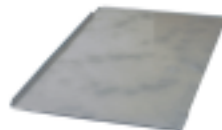
8327 (0081-07)
Pilot Chimney
(824B, 1424, 950).....**\$175**



8321 (9184)
Top Rear Awning Reflector
(824A, 824B, 1424, 950 models
without catalytic converter).....**\$175**



8321-1 (17396)
Pivoting Discharge Awning
(824A, 824B, 1424, 950 models)
with catalytic converter.....**\$987**



8313 (9077)
Crumb Pan
(824, 824A, 824B, 1424, 950)....**\$109**

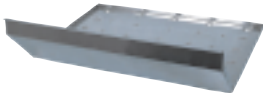


8326-1 (9467)
Chain Guard Cover
(824B, 1424, 950).....**\$265**



8320-1 (9194)
Side Panel
(824B, 1424, 950).....**\$638**

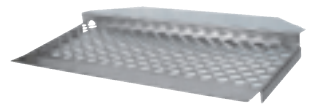
SHEET METAL (Cont'd)



8300-2 (9088)
Grease Pan
(824B Ext, 1424 Ext, 950 Ext) ..\$289



8316-1 (9023-B)
Patty Discharge Pan
(824B, 1424, 950).....\$299



8317-1 (9131)
Insert for Patty Discharge Pan
(824B, 1424, 950).....\$129



8311-1 (9452)
Grease Collection Box
(824B, 1424, 950).....\$35



8310 (9062)
Grease Drain Chute
(824)\$32

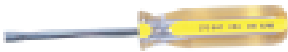


8315 (9054)
Bun Discharge Chute\$175



8310-1 (9164)
Grease Drain Chute
(824B, 1424, 950).....\$21

TOOLS & OTHER



8229
5/16" Orifice Removal Driver\$10



8289
Shaft Cleaning Tool\$6



8291
Pliers for Patty / Bun Chain....\$51



8572
Magnetic Tip Screwdriver,
Phillips Head\$4



8296
#35 Chain
Breaker Tool\$65



8375
5" Caster with Brake
(for broiler stand)...\$46

AIR BOX & BURNER



3006 (20709)
Air Box, Front 21.38".....**\$999**



3005 (20621)
Air Box, Rear 21.38".....**\$1199**



3007 (21214)
Flex Connector, 3/4" x 24" **\$205**



3008 (22937)
Double Full Burner, 1" x 26.19".....**\$619**



3000 (18447)
High Pressure Blower.....**\$914**



3001 (19764)
Heater Hose, 3/4" ID x 2".....**\$13**



3002 (19763)
Hose Clamp, #12.....**\$4**



AIR BLOWER RESTRICTOR

3003 (20903) 1/4" Bore (CJ).....**\$15**
3004 (22367) 3/8" Bore (H).....**\$28**

SHEETS & TOOLS



See PTFE Disclosure on p. 4

BROILER SHEET, BLACK/SILVER
(11-3/8" x 23")

- 8204**..... Each **\$13**
- 8204-06**..... 6-pack **\$66**
- 8204-12** *Best Value* 12-pack **\$117**



8291
Pliers for Patty/Bun Chain.....**\$51**



8296
#35 Chain Breaker Tool.....**\$65**



3106 (25332)
Combination Wrench Tool.....**\$49**







3107 (25333)
Shaft Cleaning Tool.....**\$36**



3108 (23307)
Cleaning Brush.....**\$26**

GAS & IGNITION

	Nat Gas	LP Gas
 Upper Burner Orifice	3009 (18152) #52 (CJ).....\$21 3014 (18148) #48 (H, CJ without feeder).....\$21	3016 (18163) #63 (CJ).....\$20 3029 (18150) #56 (H).....\$20
 Pilot Orifice	3010 (2182) #3225 (CJ upper, H upper & lower).....\$10 3011 (2047) #5232 (CJ lower).....\$12	3020 (2023) #4212 (CJ & H upper).....\$12 3019 (17276) #4214 (CJ & H lower).....\$12
 Lower Burner Orifice	3012 (2051) #46 (CJ).....\$10 3015 (2070-40) #40 (H, CJ without feeder).....\$15	3021 (2053) #54 (CJ).....\$18 3023 (2053) #52 (H).....\$18
 Zip Tube Orifice	3013 (22930) #70 (CJ & H).....\$47	3022 (23481) #78 (CJ & H).....\$47



3017 (5599) Upper Burner Orifice Washer (LP Gas).....\$0.25



3018 (24336) Upper Burner Orifice Pipe Adapter (LP Gas) ..\$3



3024 (20826) Zip Tube, 8.44" Long.....\$68



8235-2 (2179) Pilot Carryover Burner, #J129DDA.....\$43



3025 (2180) Pilot Carryover Burner, #J1994MDA-2H.....\$116



3028 (21316) Modulating Gas Valve (CJ).....\$757



3026 (10954) Solenoid Valve, 1/2" NPT, 24 VAC.....\$239



8228 (2049-A) Regulator, RV48, 1/2" NPT, Nat Gas.....\$71



3027 (12741) Solenoid Valve, 1/2" NPT, 24VAC, 1/4" Compression Fitting.....\$284



3720 (10291) Igniter.....\$125



3718 (16921) Ignition Module.....\$387



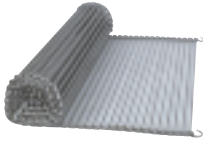
3723 (25957 / 17185) Flame Sensor, Slotted.....\$78

All prices are subject to change. Check www.dmparts.com for the most current pricing.

⚠ WARNING: Attention CA Residents - www.P65Warnings.ca.gov

ONLINE: www.dmparts.com

CONVEYOR PATTY BELT



Patty Rod Belt 22" Width

- 3048-91** (6023) 57" length (CJ).....**\$339**
- 3048-123** (6023) 77" length (H, CJ without feeder).....**\$399**

NOTE: For JF 143-2G, see page 9 for 10" and 12" width chain, sold by the foot



- 3045** (18831) Drive Shaft, Patty Belt..**\$438**



- 3044** (21722) Bearing, 5/8" Bore, Side Panel.....**\$52**



- 3043** (6028) Set Collar 5/8" Bore.....**\$13**



- 3104** (22163) Stiffener / Scraper, Patty Belt, Front.....**\$59**



- 3105** (22204) Stripper Blade, Short, Patty Belt Discharge**\$217**



- 3040** (20786) Gear Motor, DC, Brushless**\$979**



- 3041** (178996) Sprocket, 10T, Motor, 3/8" Bore.....**\$39**



- 3042** (6039) Sprocket, 32T, Patty, 5/8 Bore Brushless.....**\$82**

3046



3047



Idler Shaft Patty Belt

- 3046** (21227) (CJ).....**\$276**
- 3047** (24175) (H).....**\$77**



- 3734** (6049) Bearing, 1"W x 1-7/8"H, 5/8" Shaft.....**\$46**



- 8295** (6027) 2 Feet (23.25") req'd # 35 Drive Chain, per foot.....**\$5/ft**
- 8295-1** (6048) #35 Chain Repair Link, Master**\$3**

CONVEYOR BUN BELT



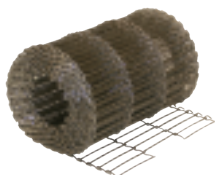
3050 (22811) Bearing, Bun Belt, Feed End, 3" x 1/2".....**\$117**



3058 (26304) PTFE Wear Strip.....**\$74**



3059 (26298) Guide for PTFE Wear Strip**\$47**



3052 (20864) Wire Bun Belt, 10.625" width, per foot (6.5ft. required).....**\$137/ft.**



3051 (21720) Dual Drive Shaft, Bun Belt.....**\$497**



For Bun Belt Drive Shaft
3055 (24171) Coupler, 5/8".....**\$79.00**
3056 (24172) Bolt, 3/8-16 x 4".....**\$3.00**
3057 (5600) Washer, 3/8".....**\$0.50**



3044 (21722) Bearing, 5/8" Bore, Side Panel.....**\$52**



3054 (20603) Sprocket, 11T, Bun, 5/8" Bore**\$75**



3053 (21860) Adjusting Arms Assy, Bun Belt.....**\$936**

ELECTRICAL



3718 (16921) Ignition Module.....**\$387**



3723 (25957 / 17185) Flame Sensor, Slotted.....**\$78**



3070 (17201) Light, Ignition Lock-Out, LED.....**\$10**



3071 (4402) Indicator Light, Green, 28V.....**\$38**

image not available

3073 (20721) Bun Platen, 208V/2400W**\$1,829**

All prices are subject to change. Check www.dmiparts.com for the most current pricing.

⚠ WARNING: Attention CA Residents - www.P65Warnings.ca.gov

ONLINE: www.dmiparts.com

ELECTRICAL (Cont'd)



3069 (4403-04)
ATC Probe, 19".....\$61



3748 (16408)
Thermocouple / Temp. Probe
11.63"\$78



3068 (18861)
Thermocouple Probe
48"\$68



3750 (13727-B)
Motor Control, 8 Pin\$692



8266 (4136)
Socket Base, 8 Pin.....\$9



3744 (15480)
Main On/Off Switch\$221



3752 (13570-C) Load Sensing
Control, 11 pin.....\$976



3754 (13737) Socket Base,
11 pin.....\$49



3078 (25918) Control, PID Temp,
Gas\$818



3072 (13579)
Switch, Motor Reversing\$31



3074 (22929) Transformer,
115/230VAC x 18-24 VAC\$307



3075 (16034) Control Transformer,
115/230VAC, 24V\$174

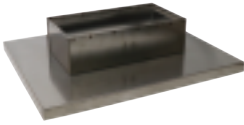


3076 (12725)
Bridge Rectifier.....\$35



3077 (4418) Relay,
24V input, 30V-25A output.....\$159

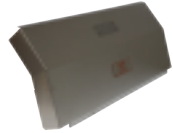
SHEET METAL



3102 (22840)
Hood, Chimney, Single.....**\$889**



3103 (22991)
Heat Baffle, Upper.....**\$462**



3092 (21201)Heat Shield,
Feeder / Frame**\$313**



3093 (25801)
Grease Pan, Flat.....**\$373**



3091 (20848)Crumb Pan,
Bun Conveyor.....**\$609**



3090 (9452)Grease Box,
12" x 10" x 4"**\$141**



3097 (21869)
Heat Shield.....**\$247**



3094 (28286)
Awning, Pivoting Flow Thru.....**\$237**



3099 (22179)
Sizzle Plate.....**\$884**



3098 (21873)
Patty Catch Pan**\$461**



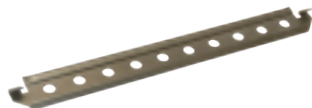
3096 (21868)
Grease Chute, Rear.....**\$103**



3095 (21865)
Bun Slide, Pivoting.....**\$386**

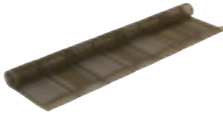


3104 (22163) Stiffener / Scraper,
Front, 22" Patty Belt.....**\$59**



3105 (22204) Stripper Blade, Short,
Discharge, 22" Patty Belt**\$239**

FEEDER



3120 (24879) Feeder Wirebelt Assy.
Complete.....**\$634**



3121 (20882) Sprocket, 24T, Wirebelt
3/8" Bore.....**\$36**



3122 (19913)
Bushing, Flanged..... **\$48**



3123 (11194)
Coupler, Drive**\$71**



3124 (20884) Drive Assembly
with Clutch..... **\$925**



3125 (15882)
Combo Clutch Assembly



8286-15 (6037) Sprocket,
15T, 5/8" Bore**\$29**



3130 (11608)
Clutch Knob, Black**\$29**



3126 (14900) Clutched
Sprocket Only.....**\$447**



3127 (10275)
Washer, Thrust..... **\$7**



3128 (14896) Bearing,
Shoulder Washer..... **\$16**



3129 (10627)
Bearing Clip..... **\$4**



8295 (60275) 1 foot (10.5") req'd
#35 Drive Chain, per foot.....**\$5/ft**



8295-1 (6048) #35 Chain Repair
Link, Master..... **\$3**



3760 (11381-6) Ladder Chain,
.353" Pitch, 13 GA, 6" Length**\$29**

NEW



See PTFE Disclosure on p. 4

PTFE SHEET, TAN, 19-3/8" x 28"
MV63-2G & MV64-2G





- 8202**.....Each **\$19**
- 8202-06**.....6-pack **\$97**
- 8202-12**.....6-pack **\$171**

PTFE SHEET, BLACK/SILVER, 11-3/8" x 23"
MV63-2GBG

- 8204**.....Each **\$13**
- 8204-06**.....6-pack **\$66**
- 8204-12**.....12-pack **\$117**

Unless otherwise noted, the parts listed on pages 19-23 can be used on the **MV63-2G**, the **MV63-2GBG** and the **MV64-2G**

AIR BOX & BURNER

		MV63-2G / 2GBG	MV64-2G
	Double Burner, Top	3423 (28970) 24.5" \$535	3401 (27873) 28.5" \$567
	Airbox	3425 (31150) 10" \$1435 3426 (31154) 12" \$1459	3418 (30959) \$969 <i>(Left & Right sides are the same)</i>
	Triple Burner, Bottom	3424 (31565) 24.5" \$1089	3417 (31560) 28.5" \$1199
	Element	N/A	3409 (22965) 28", 100W 120V \$1199




3405 (26606)
Micronel Blower, 24V **\$889**



3416 (27968)
Air Tube Manifold **\$119**



3408 (25977)
Flex Connector, 3/4" X 11" **\$169**



3001 (19764)
Heater Hose, 3/4" ID x 2" **\$13**



3002 (19763)
Hose Clamp, #12..... **\$4**



3003 (20903)
Restrictor, Air Blower, 1/4" Bore..... **\$15**






All prices are subject to change. Check www.dmparts.com for the most current pricing.

⚠ WARNING: Attention CA Residents - www.P65Warnings.ca.gov

ONLINE: www.dmparts.com



GAS & IGNITION

	MV63-2G / 2GBG	MV64-2G
	Nat Gas	
 Upper Burner Orifice	3033 (18150) #50.....\$21	3014 (18148) #48.....\$21
 Upper Pilot Orifice	8232 (2018) #3223.....\$9	8232 (2018) #3223.....\$9
 Lower Burner Orifice	3033 (18150) #50.....\$20	3014 (18148) #48.....\$21
 Lower Pilot Orifice	3011 (2047) #5232.....\$12	3011 (2047) #5232.....\$12
 Zip Tube Orifice	3013 (22930) #70.....\$47	3013 (22930) #70.....\$47



8235-2 (2179)
 Pilot Carryover Burner,
 #J129DDA.....\$43



3025 (2180)
 Pilot Carryover Burner,
 #J1994MDA-2H.....\$116



3028 (21316)
 Modulating Gas Valve.....\$757



3026 (19054)
 Solenoid Valve,
 1/2" NPT, 24VAC.....\$239

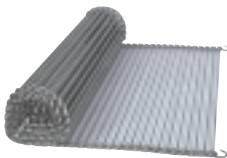


Regulator, RV48, 1/2" NPT
8228 (2049-A) Nat Gas.....\$71
8228-LP LP Gas.....\$71



Regulator Spring, RV48
8228-1 (2049-A2) Nat Gas.....\$2
8228-1LP (2049-A1) LP Gas.....\$2

CONVEYOR PATTY BELT



Note: 5 feet required per side

ROD BELT

MV63-2G / 2GBG

8290-10 (6034) 10" Width.....\$79/ft.

8290-12 (6123) 12" Width.....\$88/ft.

MV64-2G

8290-13 (6135) 13" Width.....\$64/ft.

(Left & Right sides are the same)



3406 (26490)

Gear Motor, Parallel, BLDC.....\$725

3041 (17899)

Sprocket, 10T, Motor, 3/8" Bore ...\$39



3730 (6046)

PTFE Bearing, 1" W x 1-7/8" H,
1-1/4" Bore Shaft.....\$49



3732 (6047)

PTFE Bearing, 1" W x 1-7/8" H,
3/4" Bore Shaft.....\$49



3734 (6049)

PTFE Bearing, 1" W x 1-7/8" H,
5/8" Bore Shaft.....\$46



8286-15 (6037)

Roller Chain Sprocket,
15T, 5/8" Bore.....\$29



8295 (6027)

#35 Roller Chain, per foot.....\$5/ft.



8295-1 (6048)

#35 Roller Chain
Master Link.....\$3



8295-2 (6053)

#35 Roller Chain
Offset Link.....\$4



3043 (6028)

Set Collar, 5/8" Bore.....\$13



3130 (11608)

Clutch Knob, Black.....\$29



3125 (15882)

Combo Clutch Assembly.....\$599



3126 (14900)

Clutch Sprocket Only.....\$447



3128 (14896)

Shoulder Washing Bearing.....\$16



3127 (10275)

Thrust Washer.....\$7



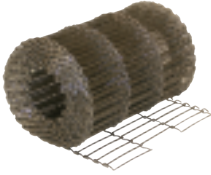
3129 (10627)

Bearing Clip.....\$4



Broiler Parts – MV Series

CONVEYOR BUN BELT (MV63-2GBG ONLY)



3052 (20864) Wire Bun Belt,
10.625" width, per foot
(6.5ft. required per side).....**\$137/ft.**



3058 (26304)
PTFE Wear Strip..... **\$74**



3059 (26298) Guide for PTFE
Wear Strip..... **\$47**

FEEDER



3123 (11194)
Drive Coupler.....**\$71**



3422 (20883)
Roller Chain Sprocket,
12 T, 3/8" Bore **\$35**



3759 (15617) MV64-2G
Push Bar, 13" Rod Belt, **\$166**



3420 (22296)
Tensioner Bracket, Pushbar
Feeder, Left Hand.....**\$74**



3421 (22297)
Tensioner Bracket, Pushbar
Feeder, Right Hand **\$74**



3760 (11381-6)
Ladder Chain, .353° Pitch,
13 GA, 6" Length.....**\$29**

ELECTRICAL



3068 (18861)
Thermocouple Probe
48" **\$68**



3402 (15576)
Thermocouple Probe,
4.09", Type J,
60" Leads.....**\$69**



3403 (26398)
Spark Ignitor,
2.281" **\$139**



3404 (27942)
Flame Sensor
with Cable,
Angled **\$84**

TOOLS & OTHER



8353
Tucker Three-Finger QuickClean™
Gloves, Poly Cotton with Kevlar
Hand, 18" Length, 650°F..... **\$99/pr.**



8291
Pliers for Patty/Bun Chain.....**\$51**



8296
#35 Chain Breaker Tool.....**\$65**



3106 (25332)
Combination Wrench Tool..... **\$49**



3107 (25333)
Shaft Cleaning Tool..... **\$36**



3108 (23307)
Cleaning Brush..... **\$26**



8762-2 MV63-2GBG
Steel Pan, 1/2 Size, 2.5" Deep ... **\$15**



8766-4
Steel Pan, 1/6 Size, 4" Deep **\$13**



8700 MV63-2G & MV64-2G
Dual Handle Pan, Amber 6-pack **\$139**

TOASTER SHEETS

PRINCE CASTLE 197/297 SERIES



See PTFE
Disclosure
on p. 4

TOASTER SHEET (16-1/2" x 20")

8219..... Each **\$14**
8219-06..... 6 Pack **\$71**
8219-12..... 12 Pack **\$126**
8219-Roll..... 108 ft. continuous roll **\$499**

PRINCE CASTLE CTD/CTDE



CTD TOASTER SHEET (6-1/2" x 26")

6850..... Each **\$15.50**
6850-06..... 6 Pack **\$79**

CTDE TOASTER SHEET (12" x 26")

6852..... Each **\$21**
6852-06..... 6 Pack **\$107**

OVEN MITTS



8335
Tucker QuickClean™ Oven Mitt,
15" Length, 450°F **\$35 ea**



8344
Tucker Puppet Mitt, Nomex® with
VaporGuard™ and Kevlar Palm
15" Length, 900°F **\$49 ea**



8354
Oven Mitt, 17" Length..... **\$9 ea**

BROILER MITTS



8353
Tucker Three-Finger QuickClean™
Gloves, Poly Cotton with Kevlar
Hand, 18" Length, 650°F..... **\$99/pr.**



8355
Broiler Mitts, Neoprene Coated,
Heavy Duty Insulated,
17" Length, 350°F **\$36/pr.**

FRYER GLOVES



Tucker QuickClean™ Fryer Gloves
20" Length, 300°F **\$33/pr.**

8330-M Size Medium
8330-L Size Large
8330-XL Size X-Large



8356
Fryer Gloves, Neoprene Coated,
Heavy Duty Insulated,
17" Length, 350°F **\$36/pr.**



8356-31
Fryer Gloves, Neoprene Coated,
Heavy Duty Insulated,
21" Length, 350°F **\$51/pr.**

CUT RESISTANT GLOVES



SAFETY TIP

Remember to inspect your safety apparel on a regular basis and replace as needed to keep your employees safe!



Tucker Red Glove **\$21 ea**

- 8405-S** Small
- 8405-M** Medium
- 8405-L** Large

White/Blue Glove **\$18 ea**

- 8404-S** Small
- 8404-M** Medium
- 8404-L** Large



G-Tek Cut Resistant Gloves, Orange **\$21/pr**

- 10550-S** Small
- 10550-M** Medium
- 10550-L** Large
- 10550-XL** X-Large

- Nitrile coated palm & fingertips for excellent grip
- Complies with FDA food handling requirements



Tucker Cut-Resistant Freezer Gloves **\$14/pr**

- 8406-M** Medium
- 8406-L** Large
- 8406-XL** X-Large

- Synthetic knit shell creates high level of flexibility & dexterity
- Palm coating withstands exposure from liquids
- Brush fleece lining provides thermal properties



Tucker Cut-Resistant Stocking Gloves **\$16/pr**

- 8407-M** Medium
- 8407-L** Large
- 8407-XL** X-Large

- Provides a good balance of comfort, dexterity & cut resistance
- Palm coating provides excellent grip & tactility



Search for parts
and place
orders online

www.dmiparts.com



- Fast Reading (Approx. 1 second)
- Runs on 2 AAA Batteries (included)
- Memory for last 25 readings

8413
Infrared Forehead Thermometer\$59



8333
Tucker QuickClean™ Apron,
36"\$45



8361 Apron,
Heavy Duty PVC,
35" x 45"\$29



8362 Face Shield (w/visor), w/Deluxe
Adjustment.....\$28

8362-1 Replacement
Visor Only, 8" x 15-1/2"\$10



8364
Tucker QuickClean™
ShinGuards™\$59



10" Hi-Top Boots
8363 Size Large\$58
8363-XL Size X-Large\$58



8403
Wall Mount for Vinyl PVC
Gloves\$15
(Hardware included)

CEILING TILE PROTECTOR



Keeping your ceiling tiles clean has never been easier!

- The Ceiling Tile Protector shown here is black for illustration purposes only. It is clear and nearly invisible.
- Fast and easy installation.
- Reduces ceiling maintenance costs.
- National Sanitation Foundation (NSF) tested.
- Fits all standard diffusers (24" x 24")

8577each **\$35**

8577-05 5-pack **\$149**

SCOTCH-BRITE™ FRYER & KITCHEN CLEANING TOOL

8373
 Starter Set (Includes 1 Tool, Each of 3 Interchangeable Cleaning Pads **\$66**

3 Powerful Positions



Acute Position
POWER SCRUBBING



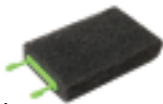
Extended Position
LONGER REACH



Right Position
HARD SPOTS

INTERCHANGEABLE CLEANING PADS FOR #8373 TOOL

Can be used wet or dry at temperatures up to 350°F



8373-1
 Gray Heavy Duty Pads..**6-pk \$24**



8373-2
 Green Medium Duty Pads..**6-pk \$24**



8373-3
 Blue Low Scratch Pads..**6-pk \$24**



10507
Viper® Pro Multi-Purpose Safety
Cutter, Hi-Vis Yellow**6-pk \$21**



10508
Viper® Pro Bag Opener,
Safety Orange**6-pk \$17**



10509
X-tra Safe® Disposable Utility
Knife, Yellow.....**6-pk \$26**



8574
Pouchmate Pouch Opener.....**\$4**



8575
Bucket Opener, Plastic.....**\$15**



8576
Safety Box Cutter**\$6**



8455
Red Sani-Pail, 6 Qt.**\$5.50**



8456
Blue Sani-Pail, 6 Qt.....**\$5.50**



9013
Scouring Pad, Green, Medium Duty,
6" x 9"**Box of 20 \$29**



8562 No Slip Magnetic
Doorstop**\$8**



8564 Table Wobble
Stopper**6-pk \$5**

DMI is proud to offer Frymaster replacement parts!

FOR FRYMASTER MJ45 AND H50 UNITS



6000 (806-4206)
Temperature Probe
Assembly **\$243**



6001 (210-0681)
Probe Guard **\$24**



6002 (826-1177)
Hi-Limit Thermostat **\$213**



6003 (807-6084)
Heat Relay, 12V **\$44**



6004 (806-3660)
Sound Device High Output **\$42**



6005 (807-2103)
Drain Valve Switch **\$19**



6006 (807-4978)
Dual Voltage Transformer ... **\$123**



6007 (826-3191)
Filter Pump/Gasket Kit **\$635**

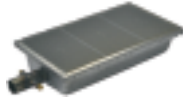


6008 (826-1712)
Filter Pump Motor **\$786**

FOR FRYMASTER H50 UNITS ONLY



6100 (826-0981)
Igniter with Gasket, Nat.....**\$165**



6101 (826-1072)
Universal Burner, Nat/LP.... **\$653**



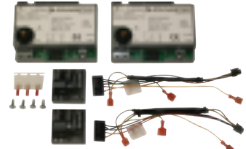
6112 (826-0931)
Burner Insulation Kit
for #6101.....**\$162**



6105 (826-2024)
Ignition Cable..... **\$75**



6114 (826-3668)
Full Vat Fenwall Ignition
Module Conversion Kit **\$442**



6116 (826-3669)
Duel Vat Fenwall Ignition
Module Conversion Kit.....**\$569**



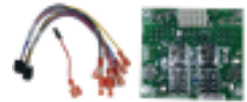
GAS VALVES

6106 (826-1122)
Honeywell, Nat.....**\$226**

6107 (826-1120)
Conversion Kit,
RS to Honeywell, Nat.....**\$303**



6108 (106-2994SP)
Blower Assembly**\$403**



6109 (826-2264)
Interface Board.....**\$339**



6110 (810-0403)
Burner Orifice, Nat, O-4000 ft. **\$34**



6111 (807-3843)
Fuse, 3 Amp, 250V.....**\$11**

FOR FRYMASTER MJ45 UNITS ONLY



6050 (806-0184)
Operating Thermostat **\$443**



6051 (810-1873)
Thermopile with Push-on
Terminal..... **\$103**



6052 (810-0617)
Thermopile with
Coaxial End..... **\$154**



6054 (807-3294)
Gas Valve, Honeywell,
Nat, 24V **\$336**



6055 (807-2427)
Gas Valve, Honeywell, Nat,
Millivolt..... **\$354**



6053 (810-0426)
Pilot, Nat..... **\$98**



6056 (826-1596)
Gas Valve Conversion Kit,
RS to Honeywell, Nat **\$310**



6057 (806-3548/826-2574)
Interface Board..... **\$473**

*Don't see the Frymaster parts you need?
Call us at 1-800-238-5384 for pricing & availability of other items.*



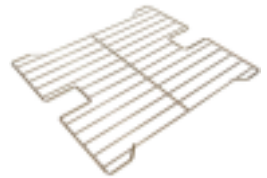
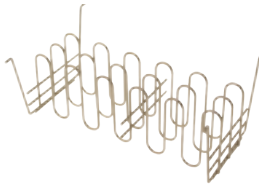
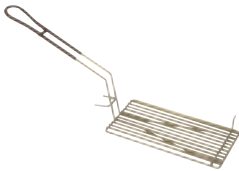
FRY BASKETS

8369 Green Handle
12"L x 6"W x 5-3/8"H..... **\$32**

8387 Blue Handle
13"L x 5-1/2"W x 5-1/2"H **\$32**

8389 Yellow Handle, 5 slot
12-1/2"L x 6-3/8"W x 3-1/2"H..... **\$31**

8369-4 Blue Handle, 10 slot
12-1/2"L x 6-1/8"W x 4"H **\$29**



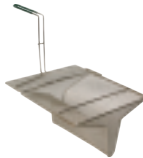
8369-3 Fry Basket Submerger
(for use with #8369) **\$27**

8369-1 Fry Basket Insert
(for use with #8369 or #8387)..... **\$39**

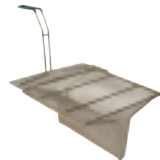
8388 Fry Basket Support Rack
(fits Frymaster MJ45 & H50)..... **\$159**

SEDIMENT TRAYS

- Fits beneath your fry baskets to catch crumbs and sediment.
- Can be removed quickly and easily for cleaning.
- Helps to lengthen the life of your oil.



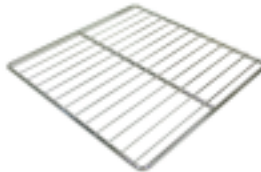
8370
14"L x 12.5"W X 6.5"H..... **\$199**
Fits Most Frymaster Gas Fryers



8372
13.25"L x 11.75"W X 6.5"H... **\$219**
Fits Most OCF/GL Gas Fryers



5201
Pitco Basket Support Rack, Twin
13-1/2"L x 6"W **\$169**



5202
Pitco Basket Support Rack, Full
13-1/2"L x 13-1/2"W **\$169**



5203
Pitco Basket Support Rack
13-1/2"L x 17-1/2"W **\$169**

SHORTENING SHUTTLE®

Shortening Shuttle® **\$815**



- **STOPS HOT OIL BUCKET BURNS!**
- **SAVES 30-50%** on labor costs and lowers your liability exposure

DMI Part #	8368	8368-S
Model #	SS-611-T	SS-611-TL
Capacity	80 Lbs. / 10.5 Gal.	60 Lbs. / 9 Gal.
Min. Fryer Drain Hgt.	11.5 in.	9.9 in.
Max. Waste Cont. Hgt.	49.5 in.	49.5 in.
Overall Dimensions	12"W x 12"H x 58"L	12"W x 10"H x



8368-1 Wall Hook **\$22**



8368-2 Top Handle **\$35**
8368-3 Wheel Handle **\$35**



8368-4 Single Wheel **\$47**

Manufactured by Worcester Industrial Products, Worcester, MA.



8247-1 Super Swivel,
1" NPT **\$169**



GAS HOSE, 1" NPT
8244 36" Length **\$199**
8244-48 48" Length **\$239**



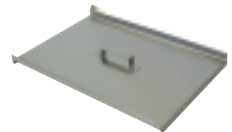
8246-1 Quick Disconnect,
1" NPT **\$105**



8369-2 Universal
Fry Basket Hanger **\$129**



8378 Fryer Drain
Extension Pipe **\$68**



8378-1 Vat Cover,
Frymaster Gas **\$86**

FRY BAGGING SCOOPS



8371
Plastic, Dual Handle..... \$19



8371-1
Plastic, Right Hand.....\$19

8371-2
Plastic, Left Hand.....\$19



8371-DH
Metal, Dual Handle..... \$19

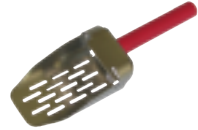


8371-RH
Metal, Right Hand.....\$19

8371-LH
Metal, Left Hand.....\$19



5634 Grate Comb for
Forced Air Fry Station\$10



8371-OR
Onion Ring Scoop..... \$32



8379
Fry Waste Bucket.....\$21

ACCUSALT SHAKER



8440 AccuSalt Shaker with
6.5 g Gray Insert Cover..... \$59



8440-3
Insert Container..... \$14



8439 AccuSalt Shaker with
3.7 g Black Insert Cover..... \$66



8440-1
Amber End Cap..... \$12



8440-4
Body Only..... \$36



8439-1
Black End Cap..... \$18



8440-2
Gray Insert Cover, 6.5 g..... \$12

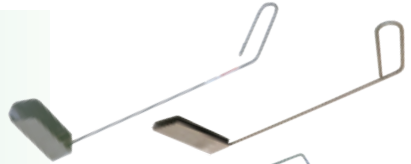


8439-2
Black Insert Cover, 3.7 g..... \$11

Fryer Cleaning Scoop

8374 Frymaster (23" length)..... **\$64**

5204 Pitco (19" length)..... **\$49**



Fryer Cleaning J-Rod

8374-1 Frymaster (29" length) **\$15**

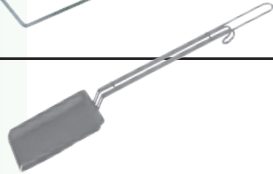
5200 Pitco (21" length) **\$91**



8374-2

Fryer Skimmer, Rectangular **\$39**

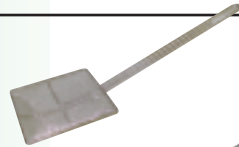
(20" length, 4" width)



8374-2A

Fryer Skimmer, Square **\$14**

(19-1/2" length, 6-1/2" width)



8374-3

Fryer Brush, Right Angle **\$17**

(21" length)



8374-4

Fryer Brush, Straight **\$14**

(23" length)



8430

Ice/Shortening Scoop, 58 oz. **\$29**

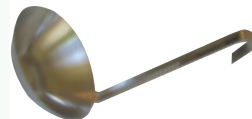
(14-1/2" length)



8432

Shortening Ladle, 32 oz. **\$29**

(19" length)





8367
Shortening Saver..... **\$165**
• Fits on top of standard 5 gal. pail
• Keeps crumbs out of fryers/multipots



8376
Shortening Test Kit..... **\$16**
8376-D
Dropper Only **\$7.50**



5549
Vito® 50/80 Filters,
Box of 100 **\$239**



5540
Fri-Mor™ Filter Powder,
12 Lb. Box **\$65**



Plain Paper Filter Sheets
Case of 100

5535 (SPP-1641) 16.5" x 25.5" .. **\$66**
5536 (SPP-1921) 22" x 34" **\$109**



Plain Paper Filter Envelopes
Case of 100

5550 (EPP-1294) 19" x 20.5"
with 1.375" Center Hole through
one side **\$159**

5548 (EPP-1843) 9.25" x 15" with
1.25" Offset Hole through
one side **\$88**

SCOTCH-BRITE™ FRYER & KITCHEN CLEANING TOOL

8373
Starter Set (Includes 1 Tool, Each of 3 Interchangeable Cleaning Pads **\$66**
3 Powerful Positions



Acute Position
POWER SCRUBBING



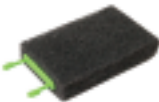
Extended Position
LONGER REACH



Right Position
HARD SPOTS

INTERCHANGEABLE CLEANING PADS FOR #8373 TOOL

Can be used wet or dry at temperatures up to 350°F



8373-1
Gray Heavy Duty Pads..6-pk **\$24**



8373-2
Green Medium Duty Pads..6-pk **\$24**

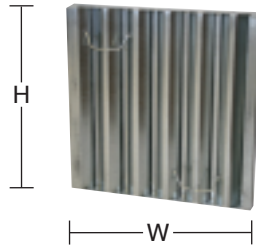


8373-3
Blue Low Scratch Pads..6-pk.. **\$24**



STAINLESS STEEL HOOD FILTERS

- Unique “Frameless” Design Maximizes Capture Area
- Lightweight
- Bale Handles Included



Part #	Trade Size H x W	Actual Dimensions H x W x D	Price
8380-S	10 x 16	9-5/8 x 15-5/8 x 1-7/8	\$42
8381-S	10 x 20	9-5/8 x 19-5/8 x 1-3/4	\$42
8382-S	16 x 16	15-5/8 x 15-5/8 x 1-3/4	\$48
8383-S	16 x 20	15-3/4 x 19-5/8 x 1-3/4	\$54
8385-S	20 X 16	19-5/8 x 15-3/4 x 1-3/4	\$54
8384-S	20 x 20	19-5/8 x 19-5/8 x 1-3/4	\$58

ORDERING TIPS

- Please order with the **Height (H)** dimension first and the **Width (W)** dimension second
- Filters should always be installed with the baffles running in the Vertical (top to bottom) position

Visit us online at
the NEW & improved
www.dmiparts.com
 and see how simple it
 is to search for parts
 and place orders 24/7



- **LENGTHENS OIL LIFE** - Clarifies, brightens & freshens shortening more effectively than competitive products.
- **IMPROVES FOOD QUALITY** - Less oil absorbed into food.
- **SPECIAL INGREDIENT** - FRI-MOR™ filter powder (in the pad) chemically alters the oil to remove impurities.
- **CONVENIENT** - Compact 30-day packaging. Easy to store and easy to monitor frequency of shortening filtration.
- **SAVES MONEY** - Less add-back in fryers reduces excessive top-off with the more expensive oil.



**See page 36 for
Vito® and Plain
Paper Filters.**

ENVELOPES			
DMI# (Gycor #)	Dimensions	Description	Price per Case of 30
5506 (ESA-149)	16" x 16" 1.125" Center Hole (through one side)	Filter Screen Adapter	\$81
5509 (ESA-126)	13.75" x 20.375" 1.50" Center Hole (through one side)	Filter Screen Adapter	\$81
5516 (ESA-154)	11" x 19" 0.75" Side Hole (through both sides)	Filter Screen Adapter	\$72
5520 (ESA-103)	16.75" x 22.5" 0.6875" Side Hole (through one side)	Filter Screen Adapter	\$106
5525 (ESA-161)	17.5" x 21" 1.50" Side Hole (through one side)	Filter Screen Adapter	\$99
5511 (ESA-124)	13" x 13" No Hole	F.A.S.T. Portable (No retrofit)	\$65
5515 (CH-1630)	14" x 15" 0.875" Center Hole (through both sides)	F.A.S.T. Portable (retrofit w/center stand pipe)	\$55
5507 (ESA-153)	11" x 20" 0.75" Center Hole (through both sides)	Low Boy (J50S) Portable	\$75
5522 (ESA-169)	11" x 20" 1.5" Center Hole (through one side)	Low Boy (J50SA), Frontline Portable	\$75
5508 (ESA-129)	19" x 20.5" 1.375" Center Hole (through one side)	Pitco Built-In	\$101
5527 (ESA-105)	14.25" x 22.5" 1.5" Off-Center Hole (through one side)	Henny Penny Built-In	\$89
5528 (ESA-156)	23" x 32" 1.5" Side Hole (through one side)	UltraFryer	\$155

THE POWDER IS IN THE PAD!



AUTOSHIP PROGRAM

All Gycor products can be set up for DMI's convenient Autoship Program. Call 1-800-238-5384 today. Never worry about forgetting to order again!

SHEETS			
DMI# (Gycor#)	Dimensions	Description	Price Per Case of 30
5500 (SSA-140)	14.5" x 21.75"	Frymaster FP3 & Pro Series Built-In	\$49
5501 (SSA-109)	12.375" x 21.5"	Frymaster FP1, FP2, FM2 Built-In	\$46
5503 (SSA-108)	12.5" x 18"	Frymaster FM1 Built-In	\$42
5517 (SSA-115)	14.1875" x 29.1875"	Frymaster Built-In	\$55
5524 (SSA-1504)	11.25" x 19.125" Thicker Grade *	Frymaster OCF Pitco ROV / SSHLV	\$46
5529 (SSA-164)	16.5" x 25.5"	Frymaster All except OCF & TCF	\$45
5505 (SSA-117)	16.375" x 24.375"	Dean / Frymaster Built-In	\$57
5510 (SSA-116)	16.375" x 18.375"	Dean / Frymaster Portable	\$48
5526 (SSA-1164)	16.375" x 18.375" Thicker Grade *	Dean / Frymaster Portable	\$66
5504 (SSA-125)	9.625" x 15"	Filtercorp Adapter F-16	\$51
5504-1 (G-100)		Gasket for use with F-16 Pads	ea. \$29
5523 (SSA-170)	12.5" x 15"	Filtercorp Adapter F-40	\$45
5523-1 (G-200)		Gasket for use with F-40 Pads	ea. \$30
5502 (SSA-150)	11.25" x 19.125"	Pitco SGH50 & AG14S Built-In	\$42
5512 (SSA-113)	13.5" x 24"	Pitco Portable P14	\$49
5519 (SSA-135)	17.5" x 28"	Pitco / Dar Pro Portable P18, P24, P34	\$63
5518 (SSA-168)	18" x 25"	RTI System	\$59

* Thicker Grade Pads are made from a heavier material for a faster flow rate.



- Fast Reading (Approx. 1 second)
- Runs on 2 AAA Batteries (included)
- Memory for last 25 readings

8413
Infrared Forehead Thermometer..... \$59

? DID YOU KNOW ?

DMI has been family owned and operated since 1997

We are known nation-wide for our outstanding customer service team!

ATKINS AQUATUFF™ 351 WRAP AND STOW SERIES DIGITAL THERMOMETER



8415-BP Thermometer with Bell (Surface) Probe..... \$309



8415-NP Thermometer with Needle Probe \$309

- **-100°F to 500°F**
- IPX7 Waterproof rated
- Auto shut-off
- 2 AAA Batteries included
- Wrap & Stow™ Probe can easily be replaced in the field without recalibration



8415-1 Bell (Surface) Probe Only \$115



8415-2 Needle Probe Only \$115



8415-3 Battery Cover..... \$23



8415-4 Thermocouple Solid Simulator \$56

- The Solid Simulator simulates food product temperature in changing ambient conditions of any refrigerator, freezer or walk-in.
- The temperature of the Solid Simulator will display immediately when plugged into your Atkins 351 Series Digital Thermometer



8410 Pocket Thermometer, 1" Dial\$9
0°F to 220°F



8411 Pocket Thermometer, Digital w/Hold \$29
-58°F to 302°F



8409 Cooler Thermometer, Metal \$11
-20°F to 80°F

- Hangs or stands for easy installation
- HACCP Safe Zones



8409-1 Cooler Thermometer, Plastic **\$5.50**
-40°F to 120°F

- Space saving design
- HACCP Safe Zones



8416 Electronic Timer / Clock / Stopwatch \$32

- Counts up or down
- Memory recall
- Easel stand, wire hanger, clip-on or magnet mount



8419 Microwave Wattage Tester \$115



8418 Digital Portion Scale \$62

- Displays in Ounces, Pounds + Ounces, or Grams (Graduation 0.05 ounce)
- Automatic Shut-Off
- 2 AA batteries included
- 11 Lb. Capacity



8417 Mechanical Portion Scale \$53

- Contoured stainless steel platform holds bagged items: fries, tacos, shrimp
- Easy to read dial
- 16oz. Capacity (Graduation 0.25 ounce)
- Compact, space-saving design

NEMCO EASY CHOPPER™



8580-2 (N55500-2) Chopper, 3/8" Cut\$329

- Fast, easy chopping of onions, tomatoes, potatoes, celery and peppers
- **3-1/4" square cutting area**
- Consistent cut size for portion control
- Blade & holder assembly easily replaceable



8582-2 Blade Assy,
3/8" Cut.....\$155



8581-2 Push Block,
3/8" Cut.....\$34

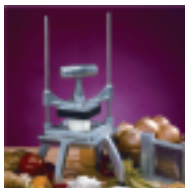


8583 Push Block
Guide\$69



8583-S Thumb
Screw for Push
Block Guide\$3

NEMCO EASY CHOPPER II™



8590-2 (N56500-2) Chopper, 3/8" Cut\$399

- Fast, easy chopping of onions, tomatoes, potatoes, celery and peppers
- **4-1/4" square cutting area**
- Consistent cut size for portion control
- A 1/3 size, 2" deep food pan fits beneath the Easy Chopper II



8592-2 Blade Assy,
3/8" Cut.....\$199



8591-2 Push Block,
3/8" Cut.....\$39



8593 Push Block
Guide\$92



8593-S Thumb
Screw for Push
Block Guide\$3

FOR BOTH NEMCO EASY CHOPPER™ AND EASY CHOPPER II™



8902
Foot Pad\$4 ea



8579
Bumper\$5



8578
Handle\$72



8578-S Screw
For Handle\$2

NEMCO EASY SLICER VEGETABLE CUTTER



8560 (N55200AN) Slicer, Adjustable Cut\$629

- Compact, portable, and easy to use
- Set the desired thickness by turning a thumb screw (calibrated in 1/16" increments to a maximum of 1/2")
- Mounting base (sold separately) attaches easily to countertops or other flat surfaces



8560-1 Blade Set, Adjustable Cut\$83



8563 Shaft Lock Assembly\$32



8561 Guard\$83



8565 Portable Base\$239

CUT RESISTANT GLOVES

Tucker Red Glove \$21 ea

- 8405-S** Small
- 8405-M** Medium
- 8405-L** Large



White/Blue Glove \$18 ea

- 8404-S** Small
- 8404-M** Medium
- 8404-L** Large



8549 Vegetable Slicer Blade Brush \$32



8551 Tomato Core-It \$4



VEGETABLE SLICERS

NEMCO EASY TOMATO SLICER

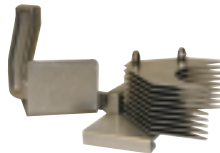


- 8556** (N55600-2) Slicer, 1/4" Blades.....**\$419**
8556-A (N55600-1) Slicer, 3/16" Blades.....**\$419**

- Cleanly cut mounds of uniformly sliced tomatoes in seconds
- Razor sharp stainless steel blades
- Unique design provides long life



- 8556-1** Blade Set, 1/4" (10 Blades).....**\$54**
8556-1A Blade Set, 3/16" (13 Blades).....**\$54**



- 8556-4** Pusher Head, 1/4".....**\$159**
8556-4A Pusher Head, 3/16".....**\$159**

NEMCO EASY TOMATO SLICER II™

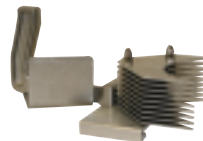


- 8557** (N56600-2) Slicer, 1/4" Blades.....**\$519**
8557-A (N56600-1) Slicer, 3/16" Blades.....**\$519**

- No need to adjust the blades
- New Pretensioned blade cartridge maximizes safety and blade longevity
- Blades are razor sharp stainless steel for a smooth, precise cut



- 8557-1** Blade Set, 1/4" (11 Blades).....**\$99**
8557-1A Blade Set, 3/16" (14 Blades).....**\$99**



- 8557-4** Pusher Head, 1/4".....**\$175**
8557-4A Pusher Head, 3/16".....**\$195**



- 8902**
 Foot Pad..... **\$4.00 ea**

**We carry additional replacement parts
 for Nemco Slicers and Choppers.**

**Call 1-800-238-5384 for pricing
 and availability.**

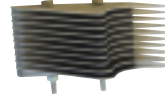
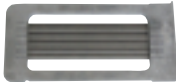
PRINCE CASTLE TOMATO SABER 943 SERIES



8550 Slicer, 1/4" Blades included (9 Blades)..... **\$649**

8550-H Slicer, 1/4" Blades included (11 Blades, High Yield)..... **\$649**

- Perma-Tight blade cartridge system never needs adjustment
- Tomato Catcher reduces clean-up and improves food safety



8550-1 Blade Set, 1/4" (9 Blades)..... **\$135**

8550-1H Blade Set, 1/4" (11 Blades, High Yield)..... **\$139**

8550-4 Pusher Head, 1/4" **\$89**

Works with both the 9 and 11 blade 1/4" sets.



8550-2
Catcher, Red Plastic..... **\$26**



8550-3
Pusher Handle, Red Plastic **\$44**

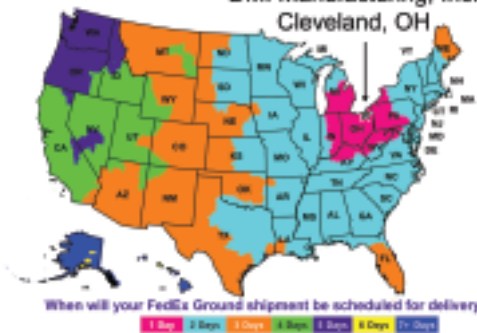


8550-6
Guide Rod Bearing..... **ea. \$15**

8550-7
Guide Rod Cushion..... **ea. \$7**

8550-5
Replacement Feet **4-pk \$19**

DMI Manufacturing, Inc.
Cleveland, OH



NORMAL DELIVERY SCHEDULE IN DAYS

(Next Day and 2nd Day Delivery Also Available)



My team is dedicated to getting your orders shipped immediately so that you can keep your restaurants running smoothly.

-Jeremy, Warehouse Manager

TONGS



8420-BK
6" Plastic,
Black...**\$2.75**

8420-R
6" Plastic,
Red.....**\$2.75**



8422-B
9" Plastic,
Blue.**\$4.00**

8422-R
9" Plastic,
Red.....**\$4.00**

8422-G
9" Plastic,
Green...**\$6.50**



8423-R
12" Plastic, Red.....**\$6**



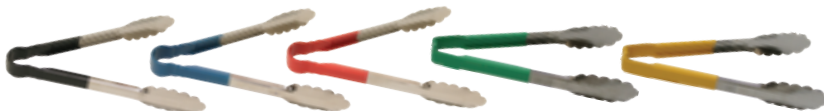
8424
9" Steel Lift N Grip **\$12**

8425
12" Steel Lift N Grip **\$13**



9009
9" Steel Scalloped..... **\$11**

9012
12" Steel Scalloped..... **\$11**



9" Metal with Plastic Coated Handle **\$16**

9009-BK Black

9009-B Blue

9009-R Red

9009-G Green

9009-Y Yellow



Squeeze Handle Disher
9000-40 0.88 oz., #40..... **\$21.50**
9000-60 0.56 oz., #60..... **\$21.50**



9003
Green Disher, 3-1/4 oz., #12..... **\$10**



9004
Yellow Disher, 2 oz., #20..... **\$10**



8426-BK Black Solid
Spoon, 1/4 oz. **\$3**



8427-G Green Solid
Spoon, 1/2 oz. **\$3**



8427-T Tan Solid
Spoon, 1/2 oz. **\$3**



8428-BR Brown Solid
Spoon, 3/4 oz. **\$3.50**



8428-R Red Solid
Spoon, 3/4 oz. **\$3.50**



8428-C Clear Solid
Spoon, 3/4 oz. **\$3.50**



8429-BR Brown Slotted
Spoon, 3/4 oz. **\$3.50**

SOLID SHORT MEASUREMISERS



9008 Red Portion
Cup, 2 oz. **\$7.75**



10520-R Red
Markings, 2 oz. **\$9.50**



10520-B Blue
Markings, 3 oz. **\$9.50**



10520-G Green
Markings, 4 oz. **\$9.50**

SOLID LONG MEASUREMISERS



10522-P Purple
Markings, 1-1/2 oz. **\$9.50**



10522-R Red
Markings, 2 oz. **\$9.50**



10522-B Blue
Markings, 3 oz. **\$9.50**



10522-G Green
Markings, 4 oz. **\$9.50**



10523
Perforated Spoodle,
Black Handle, 1oz. **\$16.50**



9002
Ice Cream Spade **\$12.00**



8471
Lettuce Knife,
Green Plastic.....\$6



8472
Lettuce Knife,
Green Handle.....\$29



8433-W
10" Scalloped Knife,
White Handle.....\$19



8433-BK
10" Scalloped Knife,
Black Handle\$19



10530-W
10" Chopping Knife,
White Handle.....\$39



10532-W
6" Scalloped Utility Knife,
White Handle.....\$22



8442
Chicken Cutter/
Scoop\$18



8470-G
Saf-T-Grip Cutting Board,
12" x 18" Green.....\$39



8470-W
Saf-T-Grip Cutting Board,
12" x 18" White.....\$25



8443
Saf-T- Grip Cutting Board,
6" x 9" White\$12



9050-BK
Refillable Grease Pencils,
Black, Box of 12\$14



9051-BK
Pencil Refills, Black,
Box of 72\$9



9005
Wire Whisk, 12" **\$8**



8434
Spatula/Sandwich Spreader,
Plastic **\$2.50**



10533
Mayo / Sauce Spreader **\$19**



10540-W
Metal Spatula, 6" x 3",
White Handle **\$34**



10542-W
Metal Spatula, 8" x 3",
White Handle **\$30**



10543
Metal Spatula, 8" x 3",
Long Wooden Handle **\$39**



10506
Plastic Bowl / Dough
Scraper **\$2**



8446
Brown Salad Crock with
Clear Lid, 1.2 qt. **\$10**



8444
Clear Powdered Sugar
Shaker with Top **\$6**



9023
Metal Salt Shaker /
Dredge Can **\$13**



10500-BK
Plastic Oval Basket,
Black **12pk \$12**



Black Food Tray
10502-BK 10" x 14" **\$4.50**
10503-BK 14" x 18" **\$6.50**



Orange Food Tray
10503-O 14" x 18" **\$6.50**

All prices are subject to change. Check www.dmiparts.com for the most current pricing.

WARNING: Attention CA Residents - www.P65Warnings.ca.gov

ONLINE: www.dmiparts.com

ACCUSALT SHAKER



8440 AccuSalt Shaker with
6.5 g Gray Insert Cover..... **\$59**



8440-3
Insert Container..... **\$14**



8439 AccuSalt Shaker with
3.7 g Black Insert Cover..... **\$66**



8440-1
Amber End Cap..... **\$12**



8440-4
Body Only..... **\$36**



8439-1
Black End Cap..... **\$18**



8440-2
Gray Insert Cover, 6.5 g..... **\$12**



8439-2
Black Insert Cover, 3.7 g..... **\$11**

ACCUTASTE™ SEASONING DISPENSER



9022
AccuTaste™ Seasoning Dispenser , .35cc Gray Unit..... **\$55**

- Patented design provides accurate, repeatable and functional dispensing of a premeasured dose
- Hinged lid allows for easy refill
- Designed for easy cleaning without disassembly



9020-1
Lid Only **\$6**



9020-2
Body Subassembly..... **\$32**



9022-1 Gray Base
Subassembly, .35cc **\$22**



9020-3
Pin Only..... **\$3**



9020-4
Spring Only..... **\$9**



9020-5
Thumbscrew Only **\$3**

SQUEEZE BOTTLES

8436 Clear Squeeze Bottle with Clear Cap, 12 oz.....\$2.25

9007 Clear Squeeze Bottle with Clear Cap, 24 oz.....\$4.00



8435-C
Clear Cap Only
(small opening)....\$1.00



8435-B
Blue Cap Only
(large opening) ...\$2.00



8435-G
Green Cap Only
(large opening)\$1.50

8460-S FIFO Bottle with Green (Small) Valve Cap, 12oz\$2.75

8460-L FIFO Bottle with Blue (Large) Valve Cap, 12oz.....\$2.75



8464
White End/Label
Cap Only\$1.00



8465-S
Green (Small) Valve
Cap Only\$2.00



8465-L
Blue (Large)Valve
Cap Only\$2.00

8460-R Squeeze Bottle with Red Dispensing and End Caps, 12oz.....\$2.50



8464-R
Red End
Cap Only\$1.00



8465-R
Red Dispensing
Cap Only\$1.50

KETCHUP DISPENSER PARTS



8520 (83910)
Server Ketchup Pump
w/Locking Lid.....\$339



8522 (84031)
7 Quart Insert/Base for #8520 Server
Ketchup Pump\$49



8521 (82533)
Spare Parts Kit for #8520
Server Ketchup Pump.....\$19

8523 (82016)
Spring for #8520 Server
Ketchup Pump\$3

SAFE ICE HANDLING



Use dedicated ice-only containers and utensils to keep ice protected, sanitary and your customers safe.

8450

Saf-T-Ice® Tote, 6 Gallon**\$75**

- HACCP Hanger™ securely holds tote to ice machine for faster and more efficient filling of ice totes
- Tri-Grip™ design reduces back injuries
- Integrated Handi-Hook™ allows tote to be hung upside down for easy drying and sanitary storage

SAF-T-SCOOP® & GUARDIAN SYSTEM™



12-16 ounce

For Beverage Station:

8452

Guardian System™ (includes Scoop, Holder & Mounting Tools)..... **\$75**

8452-1

Replacement Scoop only **\$33**



64-86 ounce

For Ice Machines:

8453

Guardian System™ (includes Scoop, Holder & Mounting Tools)..... **\$132**

8453-1

Replacement Scoop only **\$49**



- Saf-T-Scoop® protects ice from contact with hands during use
- Guardian System™ provides safe storage for the Scoop when not in use
- Guardian System™ can be mounted inside or outside of ice bins with included suction cups or wire hanging brackets



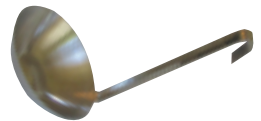
8430

Ice/Shortening Scoop, Metal, 58 oz. (14-1/2" length)..... **\$29**



8431

Ice Scoop, Plastic, 12 oz. (11-1/2" length)..... **\$9**



8432

Shortening Ladle, 32 oz. (19" length)..... **\$25**

INFRA-RED HEAT LAMP – CLEAR



375 WATT, 120V

8366.....\$12.50

8366-06.....\$66 6-pack

375 WATT COATED, 120V

8366C.....\$29

8366C-06.....\$152 6-pack

125 WATT, 120V

8395.....\$8

8395-06.....\$43 6-pack

125 WATT COATED, 120V

8395C.....\$19

8395C-06.....\$103 6-pack

250 WATT, 120V

8396.....\$8

8396-06.....\$43 6-pack

250 WATT COATED, 120V

8396C.....\$24

8396C-06.....\$130 6-pack

**SAVE 10% WHEN YOU PURCHASE
BULBS IN A 6-PACK!**

SAFETY COATED – TRADITIONAL SHAPE



40 WATT COATED, 130V

8398.....\$6

8398-06.....\$32 6-pack

40 WATT COATED, 250V

8391.....\$9

8391-06.....\$49 6-pack



There are several
convenient ways to
place your order with DMI



1-800-238-5384
weekdays 8:15 am to 5:00 pm

Or order anytime:

www.dmiparts.com
orders@dmiparts.com
866-302-9397



Pan



Flat Lid



Lid w/Handle



Drain Rack

Clear Pans - For Cold Food (-40°F to +210°F)

	Part #	Description	Price
FULL SIZE 20-7/8" x 12-3/4"	8751-2	Pan, 2-1/2" Deep	\$15.00
	8751-6	Pan, 6" Deep	\$24.00
	8751-HL	Pan Lid w/Handle	\$15.00
	8751-NL	Pan Lid w/Handle & Notch	\$16.00
	8751-1	Drain Rack	\$14.00
1/2 SIZE 10-7/16" x 12-3/4"	8752-2	Pan, 2-1/2" Deep	\$8.50
	8752-4	Pan, 4" Deep	\$10.00
	8752-6	Pan, 6" Deep	\$13.00
	8752-FL	Pan Lid - Flat	\$7.50
	8752-HL	Pan Lid w/Handle	\$7.50
	8752-1	Drain Rack	\$6.50
1/3 SIZE 6-15/16" x 12-3/4"	8753-2	Pan, 2-1/2" Deep	\$6.50
	8753-4	Pan, 4" Deep	\$9.00
	8753-6	Pan, 6" Deep	\$9.50
	8753-FL	Pan Lid - Flat	\$5.00
	8753-HL	Pan Lid w/Handle	\$5.00
	8753-1	Drain Rack	\$5.00
1/6 SIZE 6-3/8" x 6-15/16"	8756-2	Pan, 2-1/2" Deep	\$4.50
	8756-4	Pan, 4" Deep	\$5.00
	8756-6	Pan, 6" Deep	\$7.00
	8756-FL	Pan Lid - Flat	\$3.75
	8756-HL	Pan Lid w/Handle	\$4.25
	8756-NL	Pan Lid w/Handle & Notch	\$4.25
	8756-1	Drain Rack	\$2.25
1/9 SIZE 4-1/4" x 6-15/16"	8759-4	Pan, 4" Deep	\$6.00
	8759-FL	Pan Lid - Flat	\$4.00
	8759-NL	Pan Lid - Flat w/Notch	\$4.00
	8759-1	Drain Rack	\$2.00

Commonly Ordered Clear Food Pans:

8752-2

1/2 Size, 2-1/2" Deep:
Tomatoes

8752-4

1/2 Size, 4" Deep:
Lettuce

8753-4

1/3 Size, 4" Deep:
Pickles / Onions

8756-4

1/6 Size, 4" Deep:
Red Onions / Cheese



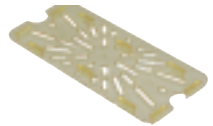
Pan



Lid w/Handle



Lid w/Handle & Notch



Drain Rack

Amber Pans - For Hot Food (-40°F to +300°F)

	Part #	Description	Price
FULL SIZE 20-7/8" x 12-3/4"	8741-6	Pan, 6" Deep	\$72.00
	8741-HL	Pan Lid w/Handle	\$39.00
1/2 SIZE 10-7/16" x 12-3/4"	8742-2	Pan, 2-1/2" Deep	\$23.00
	8742-6	Pan 6" Deep	\$39.00
	8742-HL	Pan Lid w/Handle	\$18.00
	8742-1	Drain Rack	\$13.00
1/3 SIZE 6-15/16" x 12-3/4"	8743-2	Pan, 2-1/2" Deep	\$19.50
	8743-4	Pan, 4" Deep	\$24.50
	8743-6	Pan, 6" Deep	\$33.50
	8743-HL	Pan Lid w/Handle	\$15.00
	8743-NL	Pan Lid w/Handle & Notch	\$15.00
	8743-1	Drain Rack	\$9.50
1/4 SIZE 6-3/8" x 10-7/16"	8744-4	Pan, 4" Deep	\$21.50
	8744-6	Pan, 6" Deep	\$26.50
	8744-HL	Pan Lid w/Handle	\$11.50
	8744-1	Drain Rack	\$10.50
1/6 SIZE 6-3/8" x 6-15/16"	8746-2	Pan, 2-1/2" Deep	\$14.00
	8746-4	Pan, 4" Deep	\$17.00
	8746-6	Pan, 6" Deep	\$19.50
	8746-HL	Pan Lid w/Handle	\$10.50
	8746-NL	Pan Lid w/Handle & Notch	\$10.50
	8746-1	Drain Rack	\$6.00
1/9 SIZE 4-1/4" x 6-15/16"	8749-2	Pan, 2-1/2" Deep	\$10.50
	8749-FL	Pan Lid - Flat	\$7.50

FOOD PANS



Pan



Lid w/Handle



Lid w/Handle & Notch



Drain Rack

Stainless Steel Pans

	Part#	Description	Price
1/2 SIZE 10.4" x 12.8"	8762-2	Pan, 2-1/2" Deep	\$17.00
	8762-4	Pan, 4" Deep	\$21.00
	8762-6	Pan, 6" Deep	\$29.00
	8762-HL	Pan Lid w/Handle	\$13.00
	8762-1	Drain Rack	\$22.00
1/3 SIZE 6.9" x 12.8"	8763-4	Pan, 4" Deep	\$17.00
	8763-6	Pan, 6" Deep	\$25.00
	8763-HL	Pan Lid w/Handle	\$10.00
	8763-NL	Pan Lid w/Handle & Notch	\$10.00
 8704 1/3 Size Wire Mesh Drain Rack.....	\$7.00	 8707 1/3 Size Stainless Steel Drain Rack.....	\$14.00
1/6 SIZE 6.4" x 7.0"	8766-4	Pan, 4" Deep	\$14.00
	8766-6	Pan, 6" Deep	\$18.00
	8766-HL	Pan Lid w/Handle	\$9.00
	8766-NL	Pan Lid w/Handle & Notch	\$9.00
	8766-1	Drain Rack	\$15.50
1/9 SIZE 4.3" x 6.9"	8769-4	Pan, 4" Deep	\$12.00
	8769-NL	Pan Lid w/Handle & Notch	\$8.00



8736-4
1/6 Size Pan, 4" Deep, Black.. **\$16.00**
(6-3/8" x 6-15/16") (-40°F to +375°F)



*Search for parts
and place
orders online*

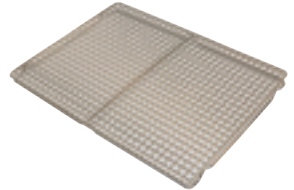
www.dmiparts.com



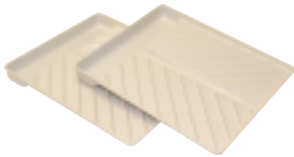
8446
Brown Salad Crock with
Clear Lid, 1.2qt. **\$9**



8495
1/2 Size Aluminum Baking Pan,
12-7/8" X 17-3/4" **\$18**



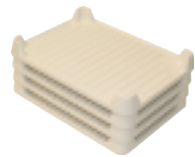
8496
1/2 Size Wire Pan Insert,
11-7/8" X 16-3/8" **\$28**



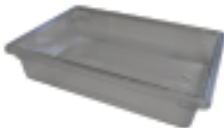
8437
Bacon Microwave Tray..... **2-pack \$31**



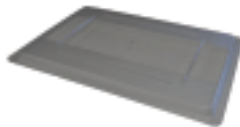
8437-1
Microwave Shelf for
Bacon Trays **\$29**



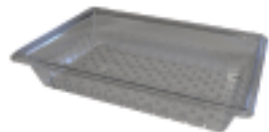
8438
Stackable Bacon Microwave
Trays..... **4-pack \$65**



8760
Lettuce Storage Box,
18" X 26" X 6" **\$43**



8760-FL
Lettuce Storage Box Lid,
18" X 26" **\$26**



8760-C
Lettuce Storage Box
Colander, 18" X 26" **\$39**



10510-W
Food Box, 18" x 26" x 6", White..... **\$42**



10511-W
Food Box Lid, 18" x 26", White **\$21**



10512-C
Food Box, 18" x 12" x 6", Clear..... **\$29**



10513-C
Food Box Lid, 18" x 12", Clear..... **\$14**



10512-R
Food Box, 18" x 12" x 6", Red..... **\$35**



10513-R
Food Box Lid, 18" x 12", Red..... **\$18**



10512-W
Food Box, 18" x 12" x 6", White **\$24**



10513-W
Food Box Lid, 18" x 12", White **\$19**



8706
Single Handle Pan, Amber each **\$24**

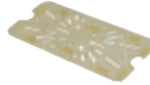


8700
Dual Handle Pan, Amber6-pack **\$139**



8730
Holding Unit Cleaning Brusheach **\$31**

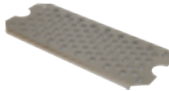
1/3 SIZE DRAIN RACKS



8743-1
Amber **\$9.50**

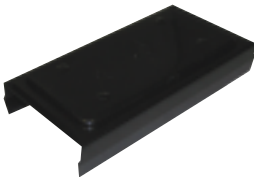


8704
Wire Mesh **\$7.00**



8707
Stainless Steel..... **\$14.00**

FOR PRINCE CASTLE UNITS



8703
Prince Castle Black Cover **\$53**



8855-M
Prince Castle Timer Overlay Kit, Main **\$104**
(Has red & blue arrows & says "Menu", "Enter", "BKFT" & "Reg")



8855-A
Prince Castle Timer Overlay Kit, Aux **\$113**

Maximize Oil
Frylife and
Quality



Order
Gycor Filters
from DMI

The Gycor Advantage



Saves Money. Longer oil life, less oil absorbed means lower costs and better fried products
Cleaner. No loose power
Compact 30-day packaging. Easy to store and track replacement usage.

The DMI Advantage



DMI stocks more than 25 different sizes of Gycor filter pad sheets and envelopes for Frymaster, Dean, Pitco, Henny Penny, UltraFryer, RTI systems and more!
Never forget to order again! Sign up for DMI's Convenient Autoship Program

See p. 38-39 for details

1-800-238-5384

 www.dmiparts.com



Presort Std
U.S. Postage
PAID
Mentor, OH
Permit No. 238

 **MANUFACTURING, INC.**
7177 Industrial Park Blvd.
Mentor, OH 44060